

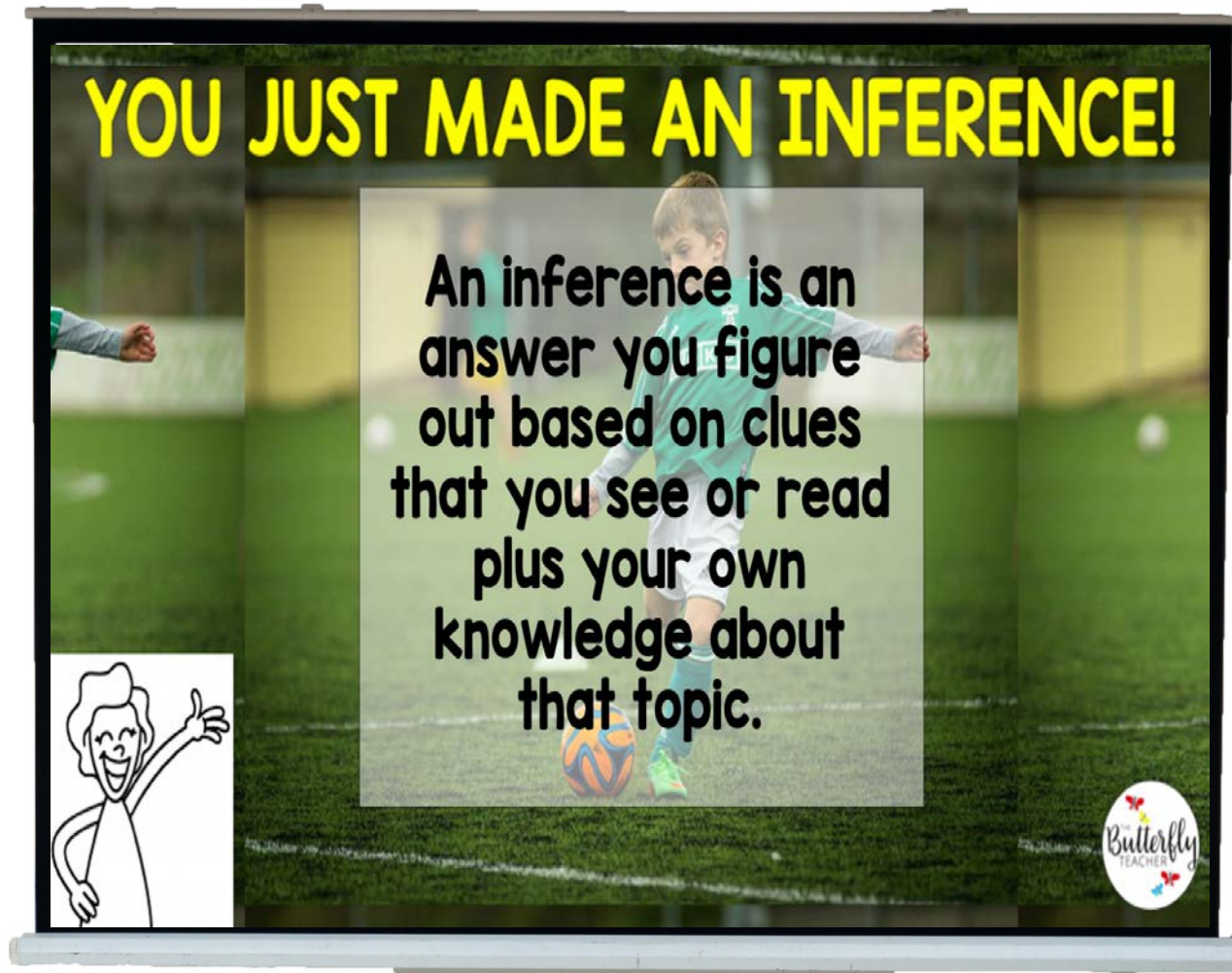
Inferencing with Images PowerPoint Lesson



Making inferences when reading can be a challenge for some students.

One effective way to teach inferencing is to scaffold your instruction by helping students infer with images first.

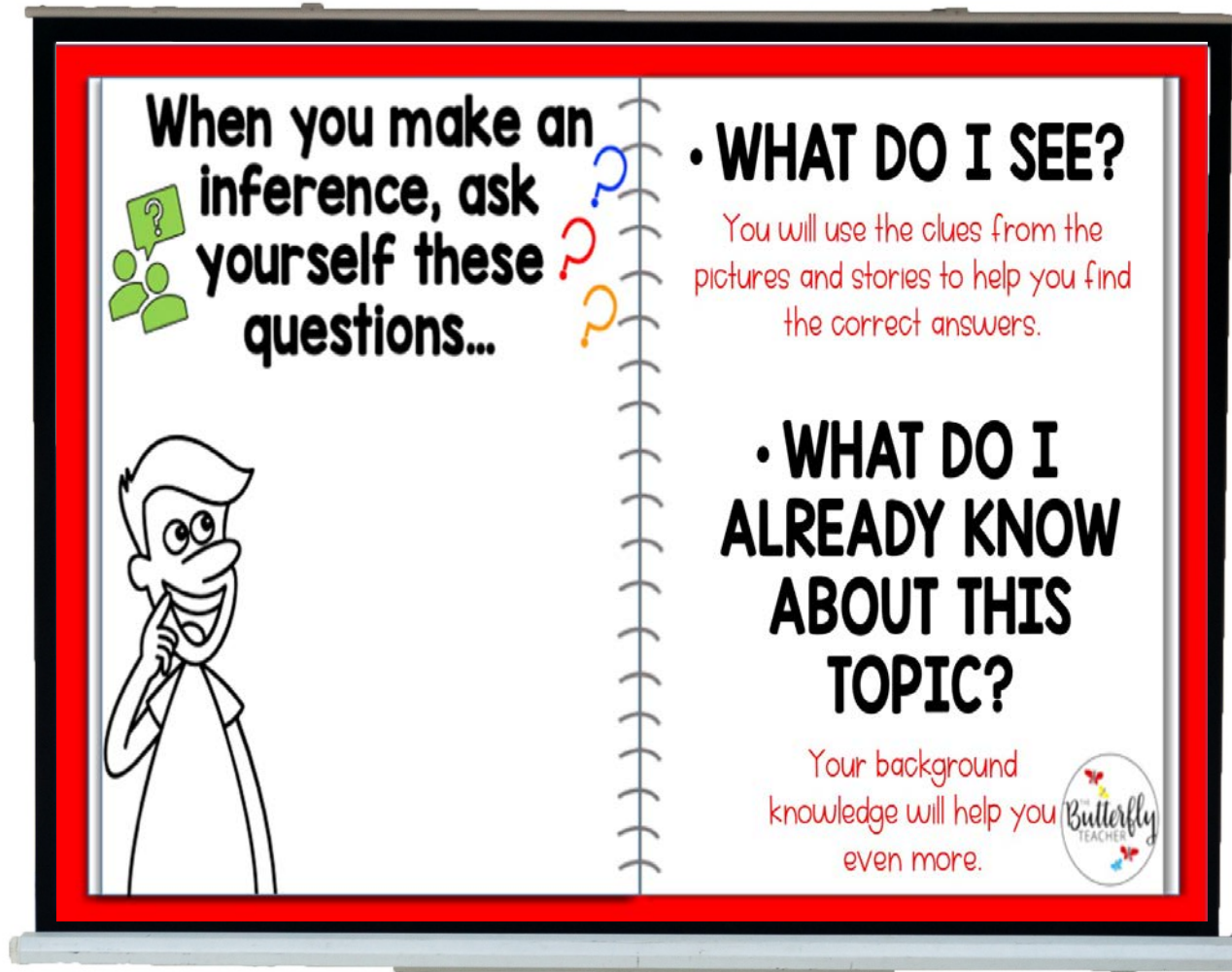
Inferencing with Images PowerPoint Lesson



This EDITABLE Power Point slideshow can be used as an intro lesson for teaching inferences.

This slideshow challenges students to think critically and to repeatedly refer back to the image/text to build their inferencing skills.

Inferencing with Images PowerPoint Lesson



✓ This resource is designed to:

- Be used as a whole class mini-lesson for inferencing.
- Help students connect inferring with images then to inferring with text.
- Work with any other inferencing activity or lesson you want to teach.

Inferencing with Images PowerPoint Lesson

The slideshow progresses from inferring with just images to inferring with images + mini passages.

There are 18 slides total.



4

What is the setting of this picture?

- **WHAT DO YOU THINK JUST HAPPENED?**

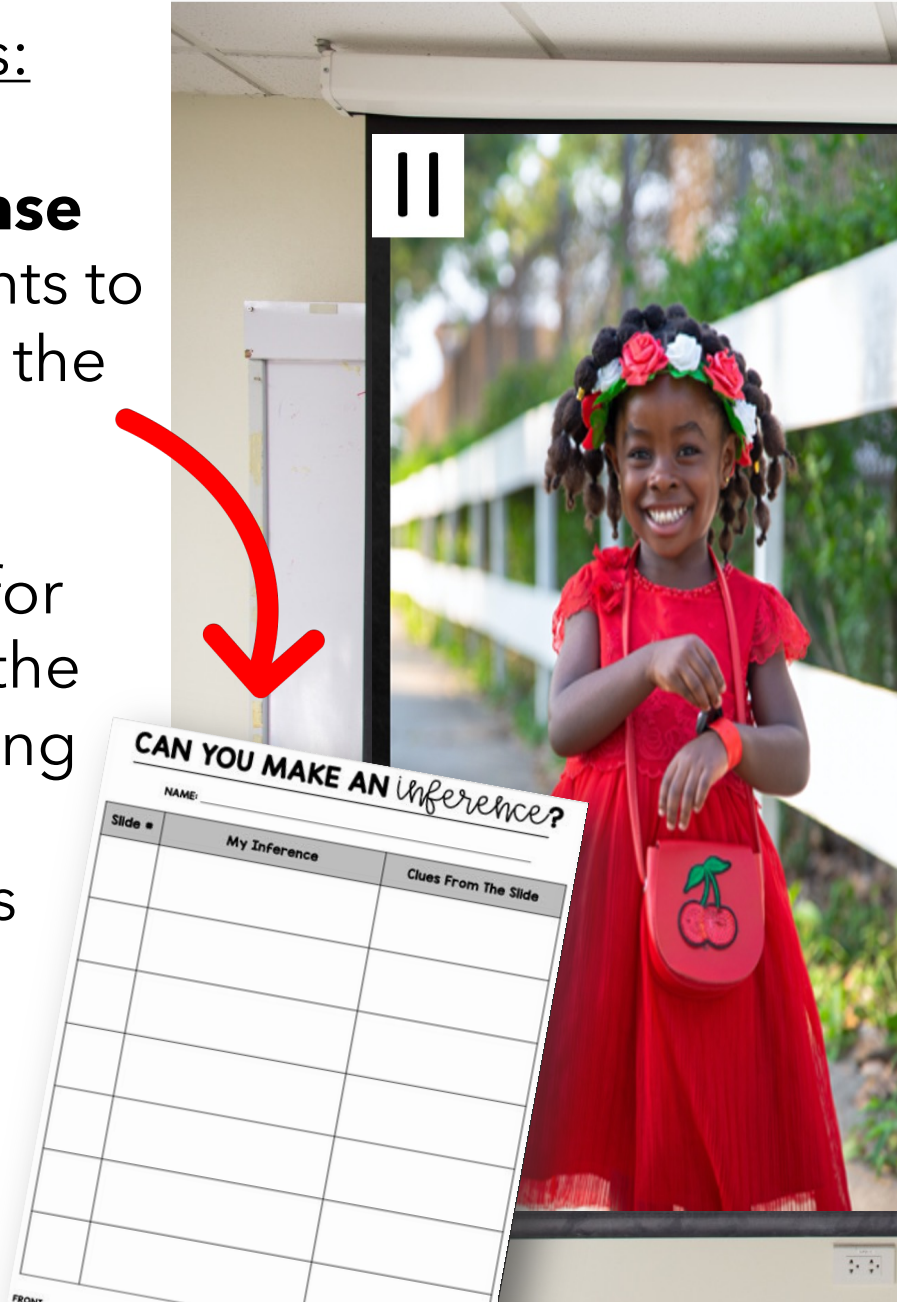


Inferencing with Images PowerPoint Lesson

✓ It also includes:

• **Student Response Sheets** for students to follow along with the PowerPoint

• **Teacher Guide** for how to use/ edit the slide show + talking points within the Power Point notes section



||

CAN YOU MAKE AN inference?

NAME: _____

Slide #	My Inference	Clues From The Slide

MORE INFERENCING WITH TEXT:

"I only want to wear my favorite color to the park today. No other colors Mommy!"

"Dana, you will look like a walking firetruck if you only wear that color, said Dana's mom"

"No, I am going to look like beautiful cherries today."

1 – Based on clues from the image and text, what is Dana's favorite color?


2 – What clues from the TEXT helped you?

Inferencing with Images PowerPoint Lesson

Teacher Feedback:

"I love this resource! I had been struggling with where to start with inferencing and how to teach it in my speech therapy sessions, but this was exactly what I was looking for!"

-Emily



q

LET'S PRACTICE WITH TEXT:

"I just can't come to work today," Lisa said with a scratchy throat. My nose is so runny, and I feel weak.

"Please tell my students that I will miss them. I may not see them for rest of the week!"

1 – Based on clues from the image and text, why is Lisa missing work?

2 – What is Lisa's job? How do you know this?

Butterfly TEACHER