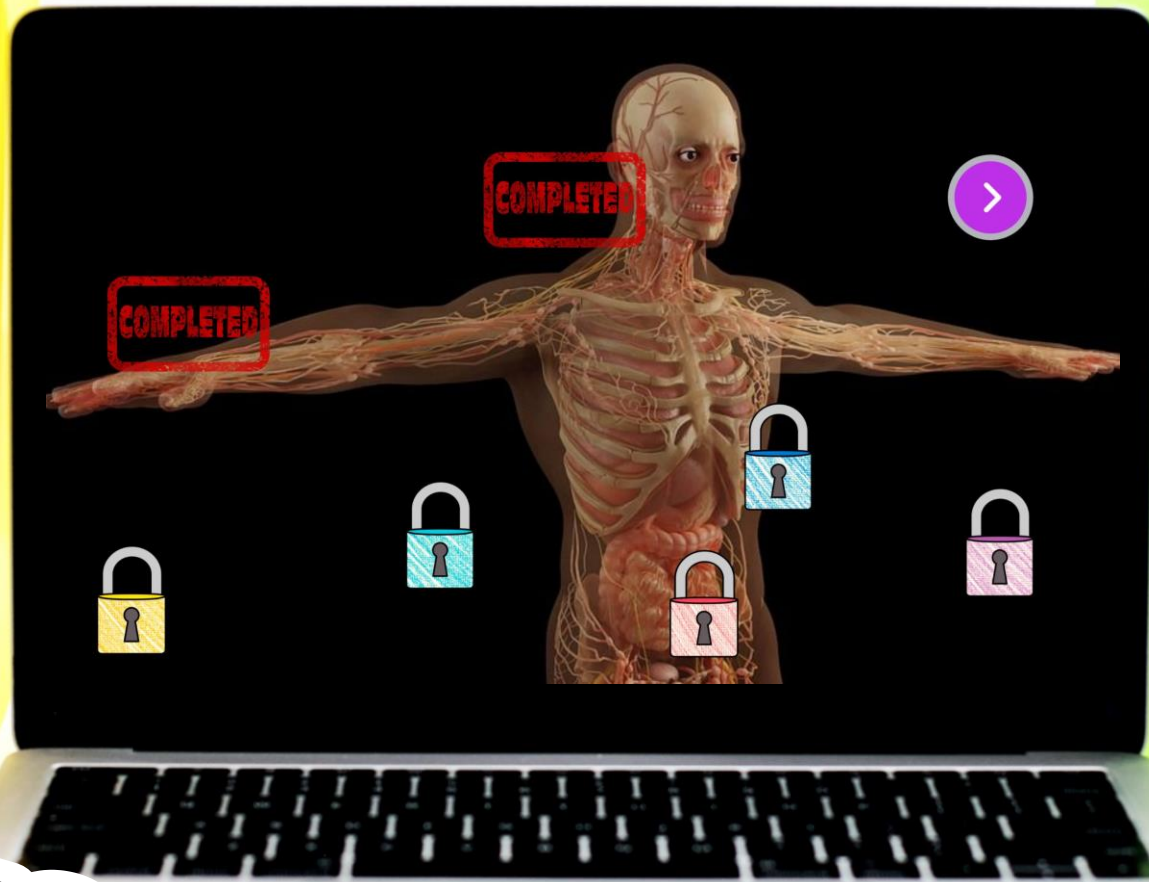


# HUMAN BODY SYSTEMS



TM

# DIGITAL ESCAPE

# COLOR CODE

DRAG AND DROP the elements to fill in the reading passage,  
then enter the COLOR CODE.

206      tendons      axial

organs      eleven

The human body is made up of cells, tissues, organs, and systems that work together to keep everything functioning. There are a total of \_\_\_\_\_ systems in the human body. The skeletal system is the bones, \_\_\_\_\_, and ligaments. Tendons attach bones to muscles so we can move. Ligaments attach bones to other bones. When a person is born, they start out with about 300 bones. However, as they get older, some bones fuse together and as an adult, a person has \_\_\_\_\_ bones. The bones in a human body have two parts; the \_\_\_\_\_ bones and appendicular skeleton. The axial has 80 bones, and they help keep a person upright. The appendicular skeleton is 126 bones, and they protect the major \_\_\_\_\_.

Color key: Red, Green, Blue, Yellow, Purple



# 9 CHALLENGES

After successfully completing each challenge students will earn a number for the final lock code.

**Nice job sleuth!**

**4**

**CONTINUE**



# PIGPEN CIPHER

REVEAL A DECODER HIDDEN BENEATH THE IMAGE ON THE LEFT,  
THEN DECODE THE WORDS.

SCRATCH ME

1.

2.

3.

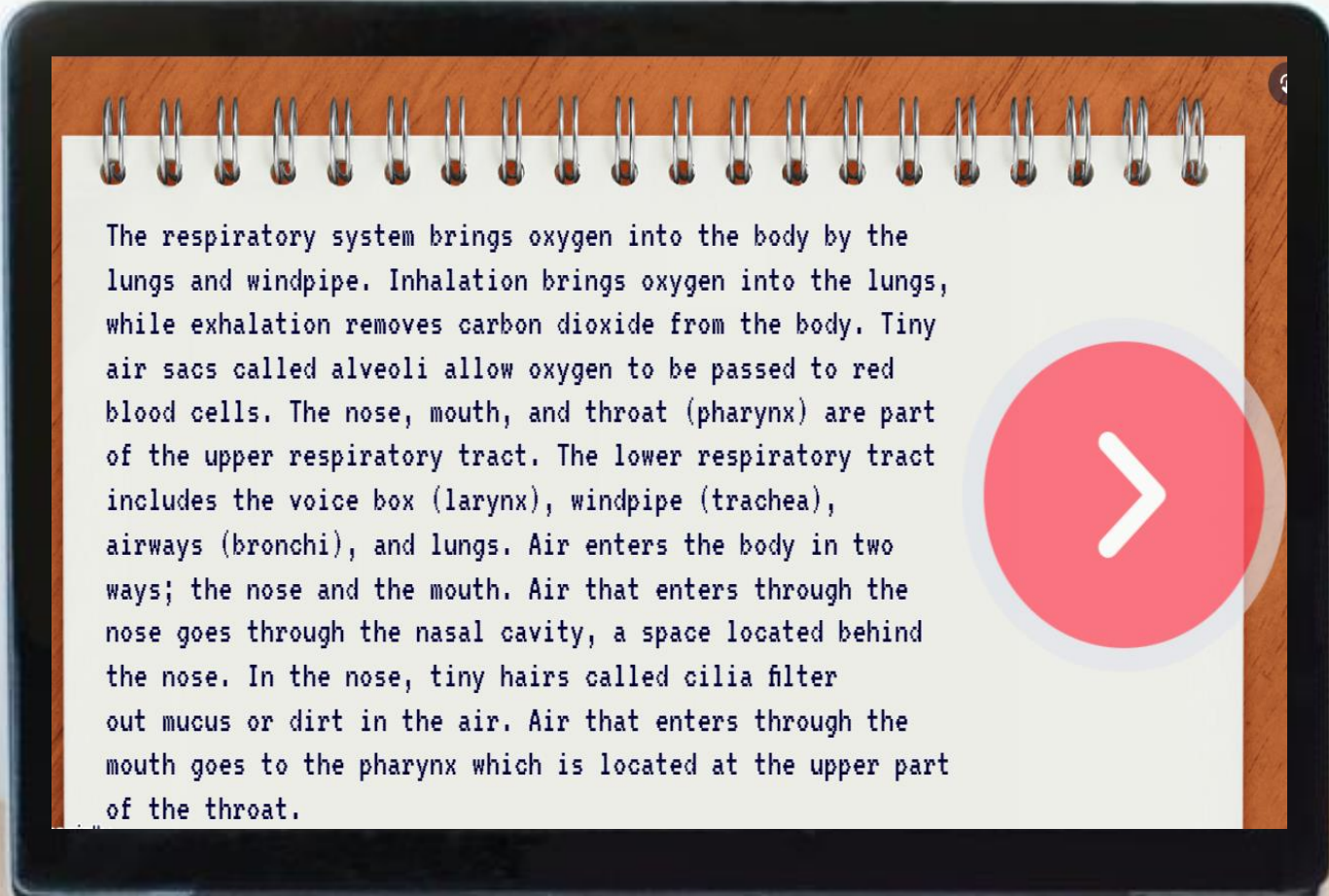
4.

✓ CHECK



# 6 PASSAGES








STUDENTS WILL READ 6 SHORT PASSAGES ABOUT THE TOPIC,  
THEN ANSWER QUESTIONS.



The respiratory system brings oxygen into the body by the lungs and windpipe. Inhalation brings oxygen into the lungs, while exhalation removes carbon dioxide from the body. Tiny air sacs called alveoli allow oxygen to be passed to red blood cells. The nose, mouth, and throat (pharynx) are part of the upper respiratory tract. The lower respiratory tract includes the voice box (larynx), windpipe (trachea), airways (bronchi), and lungs. Air enters the body in two ways; the nose and the mouth. Air that enters through the nose goes through the nasal cavity, a space located behind the nose. In the nose, tiny hairs called cilia filter out mucus or dirt in the air. Air that enters through the mouth goes to the pharynx which is located at the upper part of the throat.



# WHAT'S INCLUDED?

-  **TEACHER GUIDE**
-  **9 PUZZLE CHALLENGES**
-  **6 READING PASSAGES**
-  **2 POP UP MYSTERY PUZZLES**
-  **FREQUENTLY ASKED QUESTIONS**
-  **PUZZLE HELP AND ANSWER KEY**
-  **DIGITAL POP-UP HINTS**

**THINK  
TANK**

# CLICK AND BYE

STUDENTS WILL ELIMINATE FALSE ANSWERS TO REVEAL  
A FOUR-DIGIT CODE TO MOVE ON.

The heart pumps the blood to the lungs so it can get more oxygen.

There are two main types of blood vessels.

The circulatory system is also known as the endocrine system.

**CLICK ON  
THE FALSE  
STATEMENTS TO  
ELIMINATE THEM AND  
REVEAL A CODE.**

The main artery leaving the heart is called the cochlea.

Veins carry blood from the heart to the rest of the body.

Every time the heart beats, it sends blood throughout the body.

Blood is needed to give your body oxygen and nutrients.

The blood gives nutrients and oxygen to the cells and takes carbon dioxide and other waste the body doesn't need.

The circulatory system consists mainly of the bones, tendons, and ligaments.

**CONTINUE**



# REVEAL

Students will drag the flashlight to reveal hidden images.





# SAMPLE

Test the link and solve some  
TEACHER PUZZLES!

[CLICK HERE](#)








# PUZZLE TYPES

QWERTY  
TEXT MESSAGE  
CLICK & BYE  
JIGSAW

COLOR CODE  
DRAG & DROP  
CIPHER  
DIRECTIONAL



# QUESTIONS

-  5 FILL IN THE BLANK
-  8 DRAG AND DROP
-  9 TRUE OR FALSE
-  6 UNSCRAMBLE WORDS
-  7 MULTIPLE CHOICE

# JIGSAW

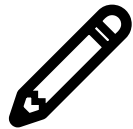
COMPLETE THE JIGSAW PUZZLE TO REVEAL A  
FOUR-DIGIT CODE TO MOVE ON.



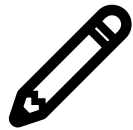
# BENEFITS



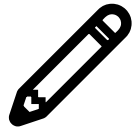
**SELF-GRADING**



**IMMEDIATE STUDENT FEEDBACK**



**PAPERLESS**



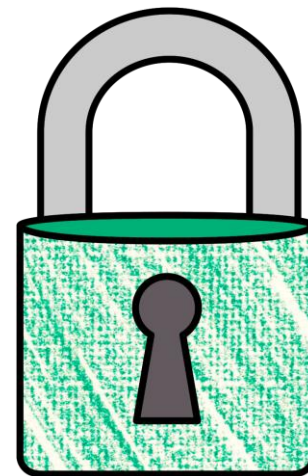
**NO PREP**



**SAVES YOU TIME**



**CRITICAL THINKING**



**THINK  
TANK**

# POP-UPS

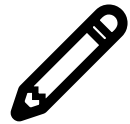
ALONG THE WAY, STUDENTS WILL ENCOUNTER INTERACTIVE  
MYSTERY POP-UP PUZZLES.



# OPTIONS



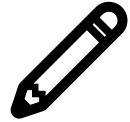
**FRONT-LOADING**



**GROUP STATIONS**



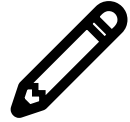
**SUB PLANS**



**UNIT REVIEW**



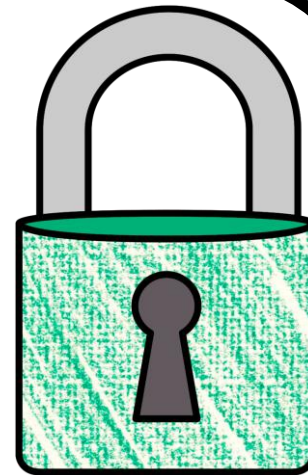
**ENRICHMENT ACTIVITY**



**TEAMWORK ACTIVITY**



**REWARD ACTIVITY**



# COLLECT KEYS

After completing each puzzle, students  
will earn a "key"





# FINAL CODE

STUDENTS ENTER THE FINAL CODE 9-DIGIT CODE  
TO CRACK THE CASE.

ENTER THE  
9 DIGIT CODE TO  
THE THIEF'S VAULT

RETURN

