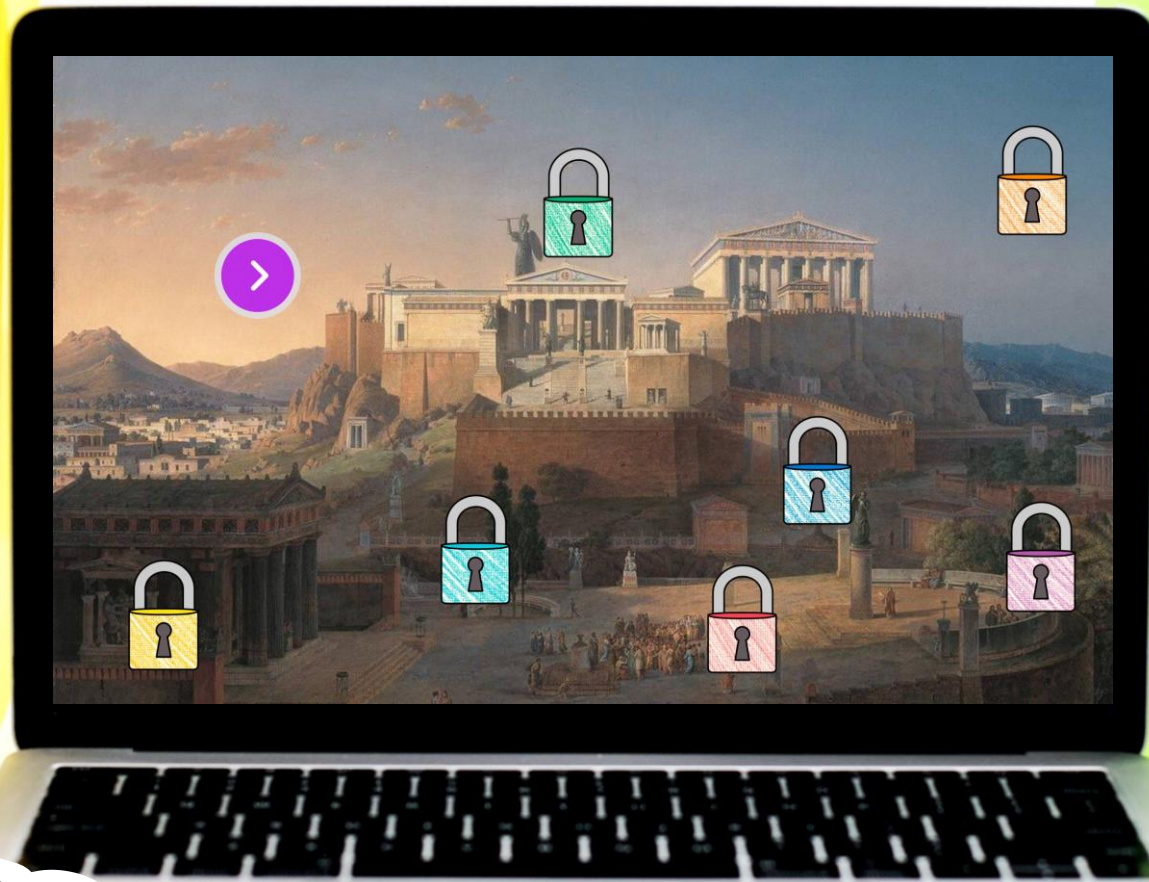


ANCIENT ATHENS



DIGITAL ESCAPE™

COLOR CODE

DRAG AND DROP the elements to fill in the reading passage,
then enter the COLOR CODE.

Aegean Sea **polis** **hill**
Mythology **city-states**

The ancient Greeks were not a united people. Instead, they lived in _____. A city-state, also called a "_____," had an urban center, or city center that branched out into the neighboring countryside. There was often a wall built around the center of the city for protection from enemies. The city centers, or acropolis, were built inside the walls, on the top of a _____. Each major city was responsible for ruling itself. The two most important city-states in Ancient Greece were Athens and Sparta, but Corinth, Argos, Delphi, Thebes, and Rhodes were also vital parts of Ancient Greece. Athens was the largest and most powerful city-state located near the _____. The city of Athens has deep roots in Greek _____, but it was also a very important place in history.

Red
Green
Blue
Yellow
Purple



9 CHALLENGES

After successfully completing each challenge students will earn a number for the final lock code.

Nice job sleuth!

4

CONTINUE

**THINK
TANK**

PIGPEN CIPHER

REVEAL A DECODER HIDDEN BENEATH THE IMAGE ON THE LEFT,
THEN DECODE THE WORDS.

SCRATCH ME

1.

2.

3.


4.

✓ CHECK



6 PASSAGES

Students will read 6 short passages about the topic,
then answer questions.










According to Greek Mythology, the city of Athens used to be a region named Attica. The city of Attica hosted a competition to build a temple for a Greek god or goddess (deities). The end goal was to have a “protector” of their city. The contest was between Poseidon, the god of the sea, and Athena, the goddess of wisdom and warcraft. Both gave the city gifts and the people judged who the temple should belong to. Poseidon gave the city a saltwater fountain and spring. It was beautiful, but impractical. You can't drink salt water, cook with it, or water crops. Athena gave the city an olive tree. The tree was useful for shade, wood, and producing olives which could be eaten or made into olive oil for cooking. The people of Attica chose Athena as their patroness and dedicated the temple to her.

enially



WHAT'S INCLUDED?

-  **TEACHER GUIDE**
-  **9 PUZZLE CHALLENGES**
-  **6 READING PASSAGES**
-  **2 POP UP MYSTERY PUZZLES**
-  **FREQUENTLY ASKED QUESTIONS**
-  **PUZZLE HELP AND ANSWER KEY**
-  **DIGITAL POP-UP HINTS**

**THINK
TANK**

CLICK AND BYE

Students will eliminate false answers to reveal a four-digit code to move on.

Athens was the birthplace of democracy.

The agora was a place to discuss philosophy.

The agoge was the center of government.

CLICK ON THE FALSE STATEMENTS TO ELIMINATE THEM AND REVEAL A CODE.

Socrates became known as "the Father of Democracy."

Oligarchy means rule of the people.

Archons were wealthy landowners.

Another word for commerce is trade.

Athens was founded and united into one by the mythical King Theseus.

At that time, men and women who owned land could vote.

CONTINUE



REVEAL

Students will drag the flashlight to reveal hidden images.



SAMPLE

Test the link and solve some
TEACHER PUZZLES!

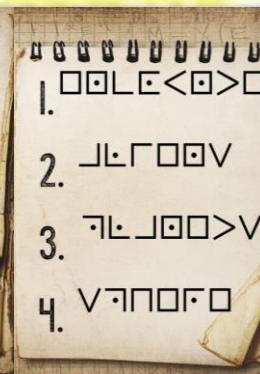
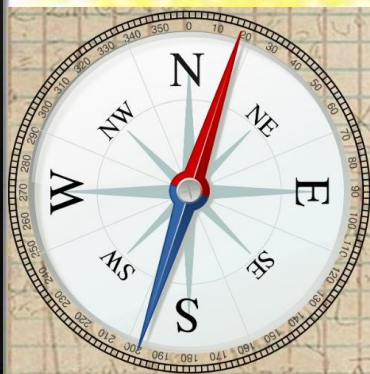
[CLICK HERE](#)



PUZZLE TYPES

QWERTY
TEXT MESSAGE
CLICK & BYE
JIGSAW

COLOR CODE
DRAG & DROP
CIPHER
DIRECTIONAL



1

2
ABC

3
DEF

4
GHI

5
JKL

6
MNO






7
PQRS

8
TUV

9
WXYZ



QUESTIONS

-  5 FILL IN THE BLANK
-  8 DRAG AND DROP
-  9 TRUE OR FALSE
-  6 UNSCRAMBLE WORDS
-  7 MULTIPLE CHOICE

JIGSAW

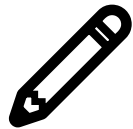
COMPLETE THE JIGSAW PUZZLE TO REVEAL A
FOUR-DIGIT CODE TO MOVE ON.



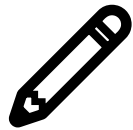
BENEFITS



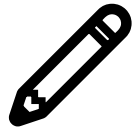
SELF-GRADING



IMMEDIATE STUDENT FEEDBACK



PAPERLESS



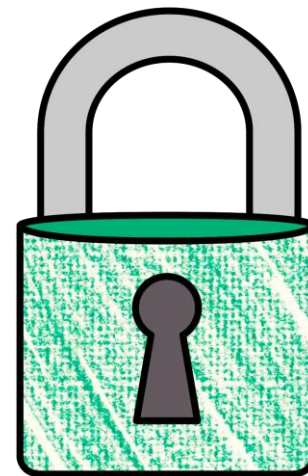
NO PREP



SAVES YOU TIME



CRITICAL THINKING



**THINK
TANK**

POP-UPS

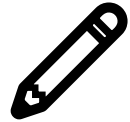
ALONG THE WAY, STUDENTS WILL ENCOUNTER INTERACTIVE
MYSTERY POP-UP PUZZLES.



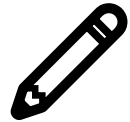
OPTIONS



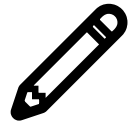
FRONT-LOADING



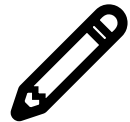
GROUP STATIONS



SUB PLANS



UNIT REVIEW



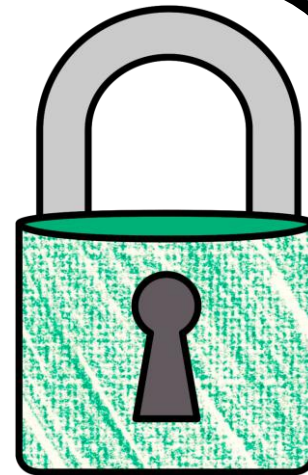
ENRICHMENT ACTIVITY



TEAMWORK ACTIVITY



REWARD ACTIVITY



**THINK
TANK**

COLLECT KEYS

After completing each puzzle, students
will earn a "key"



FINAL CODE

STUDENTS ENTER THE FINAL CODE 9-DIGIT CODE
TO CRACK THE CASE.

ENTER THE
9 DIGIT CODE TO
THE THIEF'S VAULT

RETURN

