

# ROBERT FULTON

# DIGITAL ESCAPE™

## PUZZLE 5

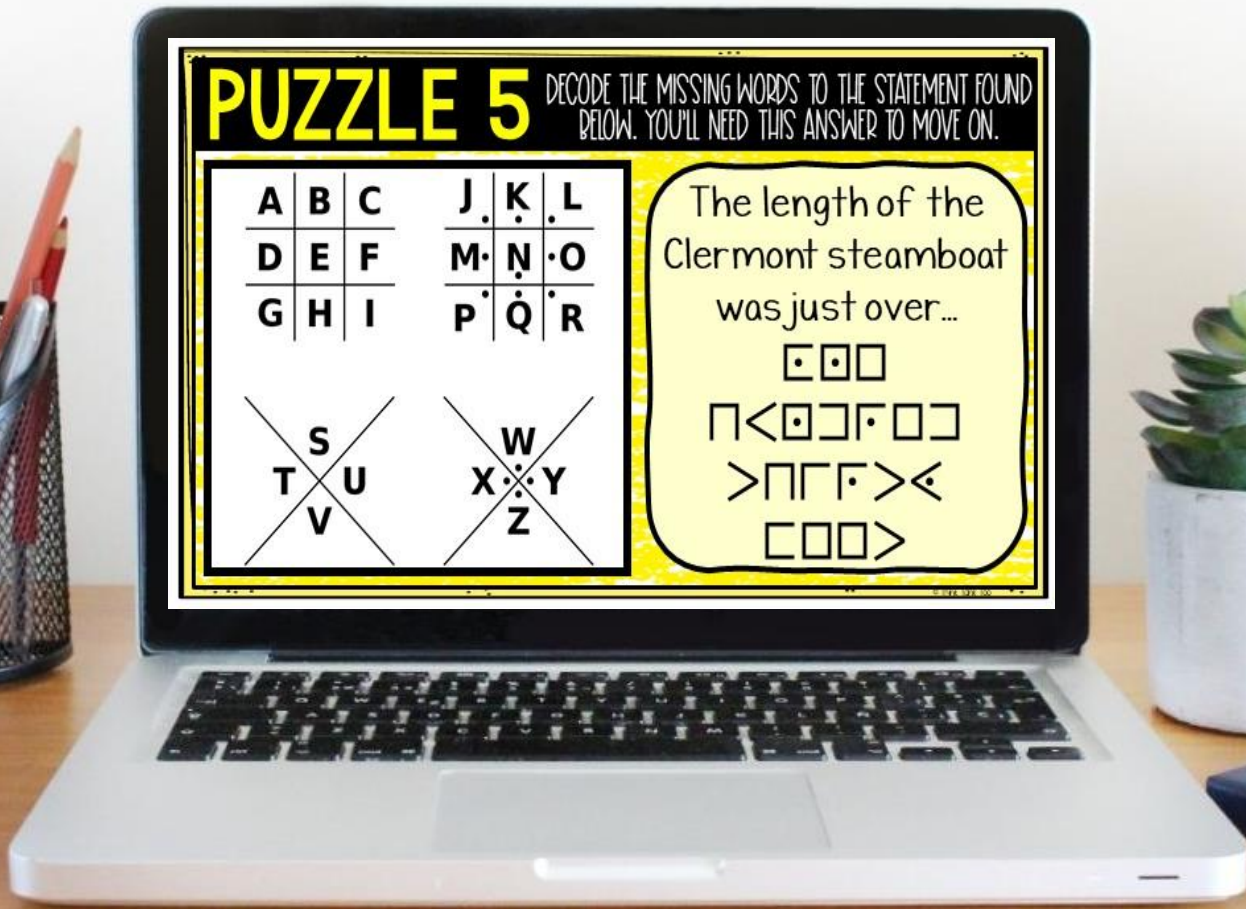
DECODE THE MISSING WORDS TO THE STATEMENT FOUND BELOW. YOU'LL NEED THIS ANSWER TO MOVE ON.

|   |   |   |   |   |   |
|---|---|---|---|---|---|
| A | B | C | J | K | L |
| D | E | F | M | N | O |
| G | H | I | P | Q | R |

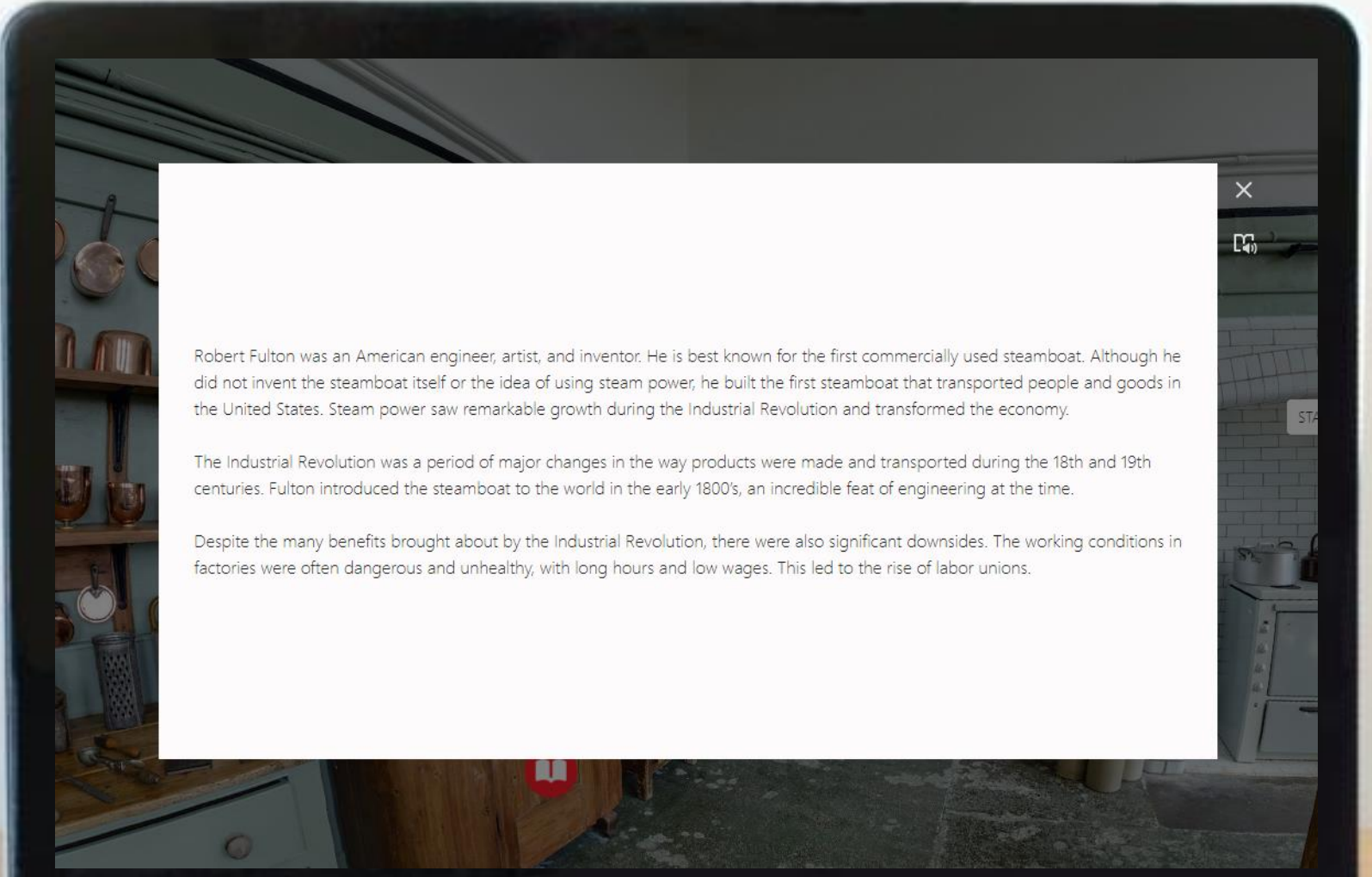
|              |              |
|--------------|--------------|
| <del>S</del> | <del>W</del> |
| T            | X            |
| U            | Y            |
| V            | Z            |

The length of the  
Clermont steamboat  
was just over...

□□□  
□◁□□▷□□  
>□□▷<◁  
□□□>



# 6 PASSAGES



Robert Fulton was an American engineer, artist, and inventor. He is best known for the first commercially used steamboat. Although he did not invent the steamboat itself or the idea of using steam power, he built the first steamboat that transported people and goods in the United States. Steam power saw remarkable growth during the Industrial Revolution and transformed the economy.

The Industrial Revolution was a period of major changes in the way products were made and transported during the 18th and 19th centuries. Fulton introduced the steamboat to the world in the early 1800's, an incredible feat of engineering at the time.

Despite the many benefits brought about by the Industrial Revolution, there were also significant downsides. The working conditions in factories were often dangerous and unhealthy, with long hours and low wages. This led to the rise of labor unions.

# 12 QUESTIONS

MULTIPLE CHOICE AND SHORT ANSWER

Factory working conditions at the time were \_\_\_\_.

- Dangerous
- Long hours
- Low wages
- All of the above

Steam power saw remarkable growth during the \_\_\_\_  
Revolution.

Type answer here



# 6 PUZZLES

Should students get "stuck" on a puzzle, hint cards can be found throughout the escape room.

**PUZZLE 6** DECODE THE MISSING WORDS BELOW. YOU'LL FIND THE KEY TO THE NEXT ROOM.

|   |   |   |   |     |   |
|---|---|---|---|-----|---|
|   | 1 | 2 | 3 | 4   | 5 |
| 1 | D | B | E |     | C |
| 2 | K |   | H | I/J | F |
| 3 |   | P | N | O   | M |
| 4 | T | R |   | Q   | S |
| 5 |   | Z | X | V   | W |

Example: The letter "C" would be 5-1.

**PUZZLE 1** DECODE THE MISSING WORDS BELOW. YOU'LL FIND THE KEY TO THE NEXT ROOM.

Birds cannot locate these items.

|  |     |  |     |  |     |  |     |
|--|-----|--|-----|--|-----|--|-----|
|  | = A |  | = E |  | = I |  | = M |
|  | = B |  | = F |  | = J |  | = N |
|  | = C |  | = G |  | = K |  | = O |
|  | = D |  | = H |  | = L |  | = P |

**PUZZLE 3** DECODE THE MISSING WORDS BELOW. YOU'LL FIND THE KEY TO THE NEXT ROOM.

In the Outer Court

2-1, 1-4, 1-3 3-6, 1-9 1-5,

**PUZZLE 5** DECODE THE MISSING WORDS BELOW. YOU'LL FIND THE KEY TO THE NEXT ROOM.

|   |   |   |   |   |   |
|---|---|---|---|---|---|
| A | B | C | J | K | L |
| D | E | F | M | N | O |
| G | H | I | P | Q | R |

~~S~~ ~~W~~  
T U X Y  
V Z

**PUZZLE 4** DECODE THE MISSING WORDS BELOW. YOU'LL NEED THE KEY TO THE NEXT ROOM.

The In  
is b  
KZ  
V  
GIZM

**PUZZLE 2** DECODE THE MISSING WORDS BELOW. YOU'LL FIND THE KEY TO THE NEXT ROOM.

|   |   |   |
|---|---|---|
| 1 | 2 | 3 |
| 4 | 5 | 6 |
| 7 | 8 | 9 |

Back in the day, you would have to press the number multiple times to find a letter to send a text message.

# SAMPLE

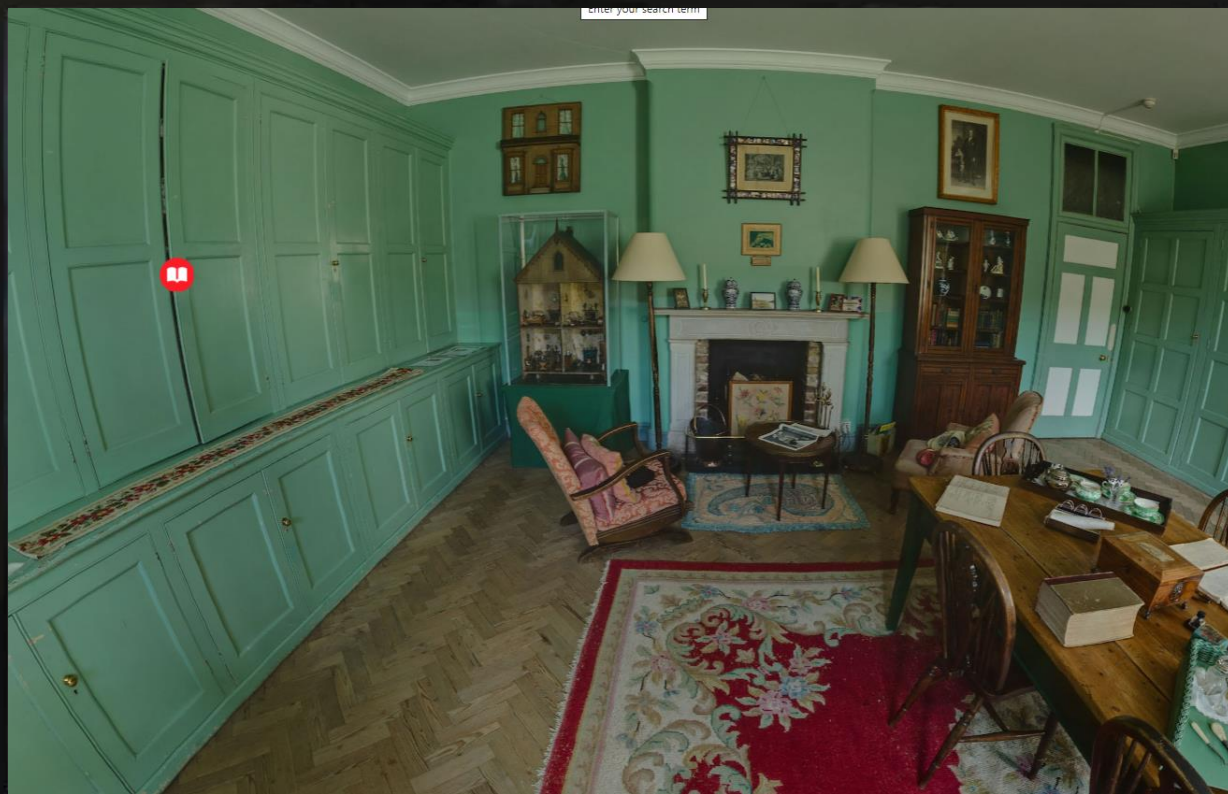
Test the link and solve some  
TEACHER PUZZLES!

[CLICK HERE](#)



# 360° VIEW

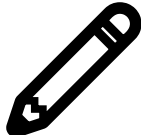
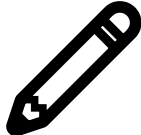

DRAG THE MOUSE OR KEYPAD TO MOVE THE SCREEN FOR A 360° VIEW!

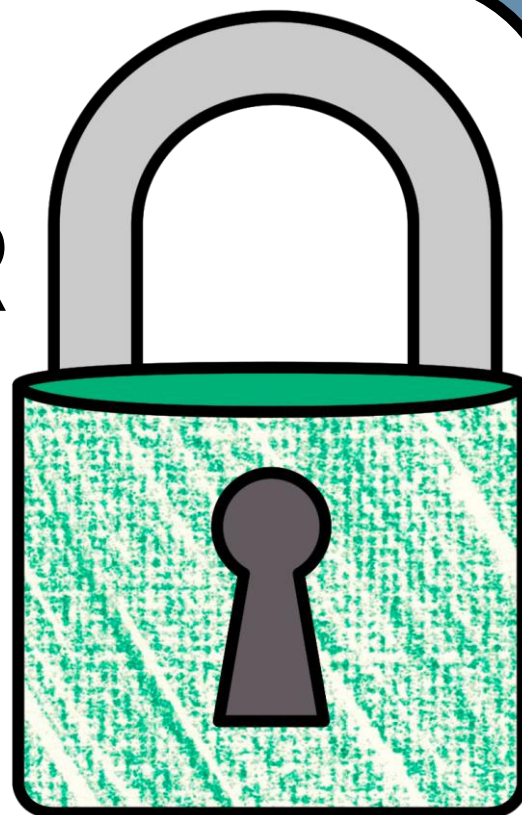


# WHAT'S INCLUDED?

- ✓ 6 SHORT READING PASSAGES
- ✓ 12 QUESTIONS TOTAL
- ✓ 6 PUZZLES
- ✓ STUDENT DIRECTIONS (DIGITAL)
- ✓ TEACHER ANSWER KEY
- ✓ PUZZLE HINTS
- ✓ URL LINK TO SHARE ON ANY LMS

# WHAT'S NEEDED?

-  **SCRATCH PAPER**
-  **PENCILS**
-  **INTERNET**





# BENEFITS OF USE



**SELF-GRADING**



**IMMEDIATE STUDENT FEEDBACK**



**PAPERLESS**



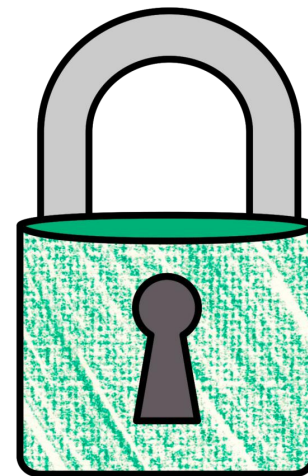
**NO PREP**



**SAVES YOU TIME**



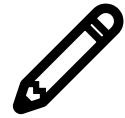
**CRITICAL THINKING**



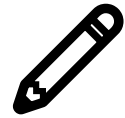
# OPTIONS FOR USE



**FRONT-LOADING**



**GROUP STATIONS**



**SUB PLANS**



**UNIT REVIEW**



**ENRICHMENT ACTIVITY**



**TEAMWORK ACTIVITY**



**REWARD ACTIVITY**

