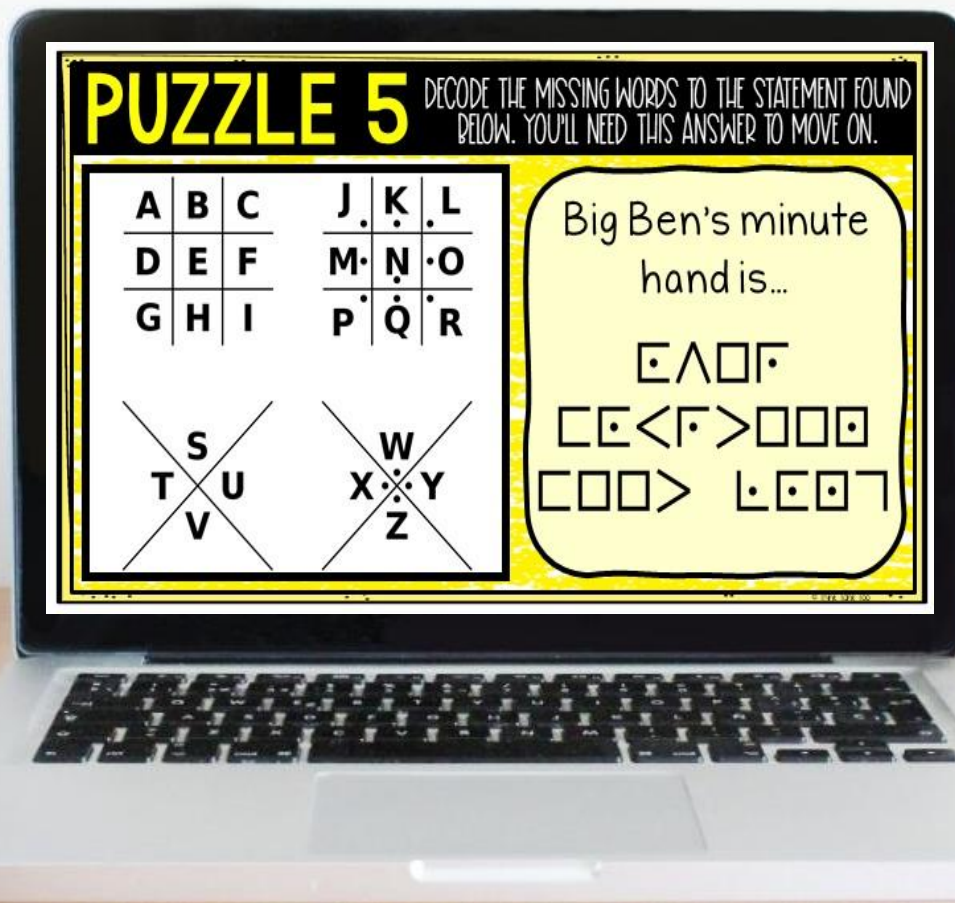


# WORLD LANDMARKS

# DIGITAL ESCAPE™



# 6 PASSAGES

Throughout the world, there are many iconic landmarks which represent significant historical, architectural, or cultural meaning. These landmarks have been the subject of countless photos, paintings, and works of literature, and have attracted tourists from all over the world.

The Eiffel Tower in Paris, France is one of the world's most famous and recognizable structures. Designed by Gustave Eiffel, the French began construction on the Eiffel Tower in 1887 and it was completed in 1889 for the Paris World's Fair. At the time it was built, the Eiffel Tower was the tallest structure in the world at 1,083 feet tall. It held this title until the Chrysler Building was built in New York City, which was 1,046 feet in 1930. For locals living in Paris, the tower is referred to as "La dame de fer," which translates as "the Iron Lady." The tower was used as a radio transmitter in World War I and World War II.

# 12 QUESTIONS

MULTIPLE CHOICE AND SHORT ANSWER

**What does "La dame de fer" translate to?**

Copper Tower

The Steel Gate

Lady Liberty

The Iron Lady

**What year did the French begin construction on the Eiffel Tower?**

Type answer here

# 6 PUZZLES

Should students get "stuck" on a puzzle, hint cards can be found throughout the escape room.

**PUZZLE 6** DECODE THE MISSING BELOW. YOU'LL FIND THE KEY TO THE NEXT ROOM.

	1	2	3	4	5
1	D	B	E		C
2	K		H	I/J	F
3		P	N	O	M
4	T	R		Q	S
5		Z	X	V	W

Example: The letter "C" would be 5-1.

**PUZZLE 1** DECODE THE MISSING BELOW. YOU'LL FIND THE KEY TO THE NEXT ROOM.

Birds cannot locate these items.

	= A		= E		= I		= M
	= B		= F		= J		= N
	= C		= G		= K		= O
	= D		= H		= L		= P

**PUZZLE 3** DECODE THE MISSING BELOW. YOU'LL FIND THE KEY TO THE NEXT ROOM.

In the Outer Court

2-1, 1-4, 1-3 3-6, 1-9 1-5,

**PUZZLE 5** DECODE THE MISSING BELOW. YOU'LL FIND THE KEY TO THE NEXT ROOM.

A	B	C	J	K	L
D	E	F	M	N	O
G	H	I	P	Q	R

~~S~~ ~~T~~ ~~U~~ ~~V~~ ~~W~~ ~~X~~ ~~Y~~ ~~Z~~

**PUZZLE 4** DECODE THE MISSING WORD BELOW. YOU'LL NEED THE KEY TO THE NEXT ROOM.

The In  
is b  
KZ  
V  
GIZM

**PUZZLE 2** DECODE THE MISSING BELOW. YOU'LL FIND THE KEY TO THE NEXT ROOM.

1	2	3
4	5	6
7	8	9

Back in the day, you would have to press the number multiple times to find a letter to send a text message.

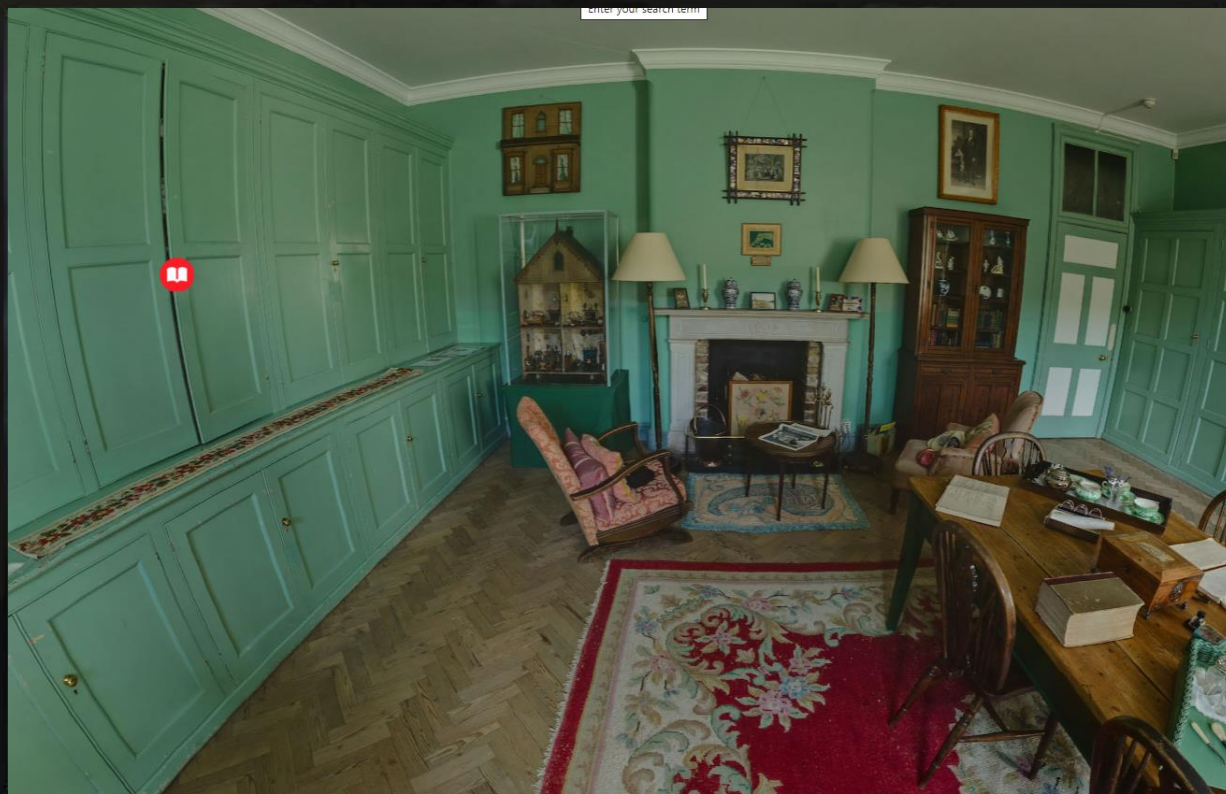
# SAMPLE

Test the link and solve some  
TEACHER PUZZLES!

[CLICK HERE](#)

# 360° VIEW

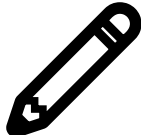
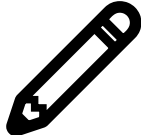

DRAG THE MOUSE OR KEYPAD TO MOVE THE SCREEN FOR A 360° VIEW!

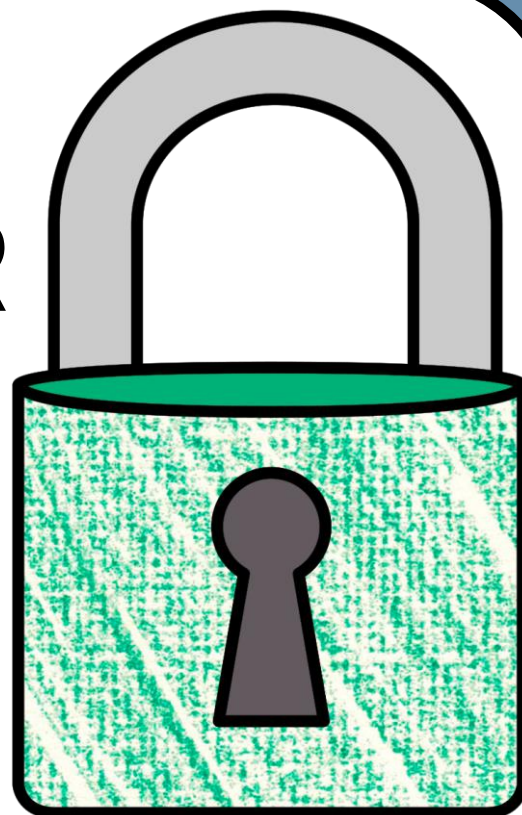


# WHAT'S INCLUDED?

- ✓ 6 SHORT READING PASSAGES
- ✓ 12 QUESTIONS TOTAL
- ✓ 6 PUZZLES
- ✓ STUDENT DIRECTIONS (DIGITAL)
- ✓ TEACHER ANSWER KEY
- ✓ PUZZLE HINTS
- ✓ URL LINK TO SHARE ON ANY LMS

# WHAT'S NEEDED?

-  **SCRATCH PAPER**
-  **PENCILS**
-  **INTERNET**





# BENEFITS OF USE



**SELF-GRADING**



**IMMEDIATE STUDENT FEEDBACK**



**PAPERLESS**



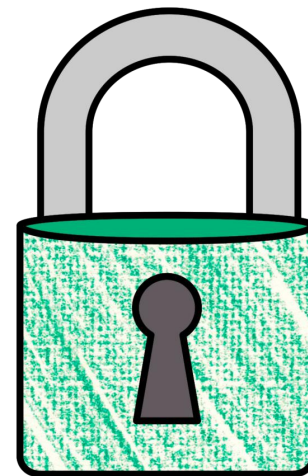
**NO PREP**



**SAVES YOU TIME**



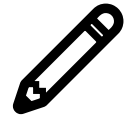
**CRITICAL THINKING**



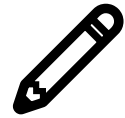
# OPTIONS FOR USE



**FRONT-LOADING**



**GROUP STATIONS**



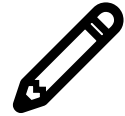
**SUB PLANS**



**UNIT REVIEW**



**ENRICHMENT ACTIVITY**



**TEAMWORK ACTIVITY**



**REWARD ACTIVITY**

