

FORMS OF ENERGY

DIGITAL ESCAPE™

PUZZLE 5

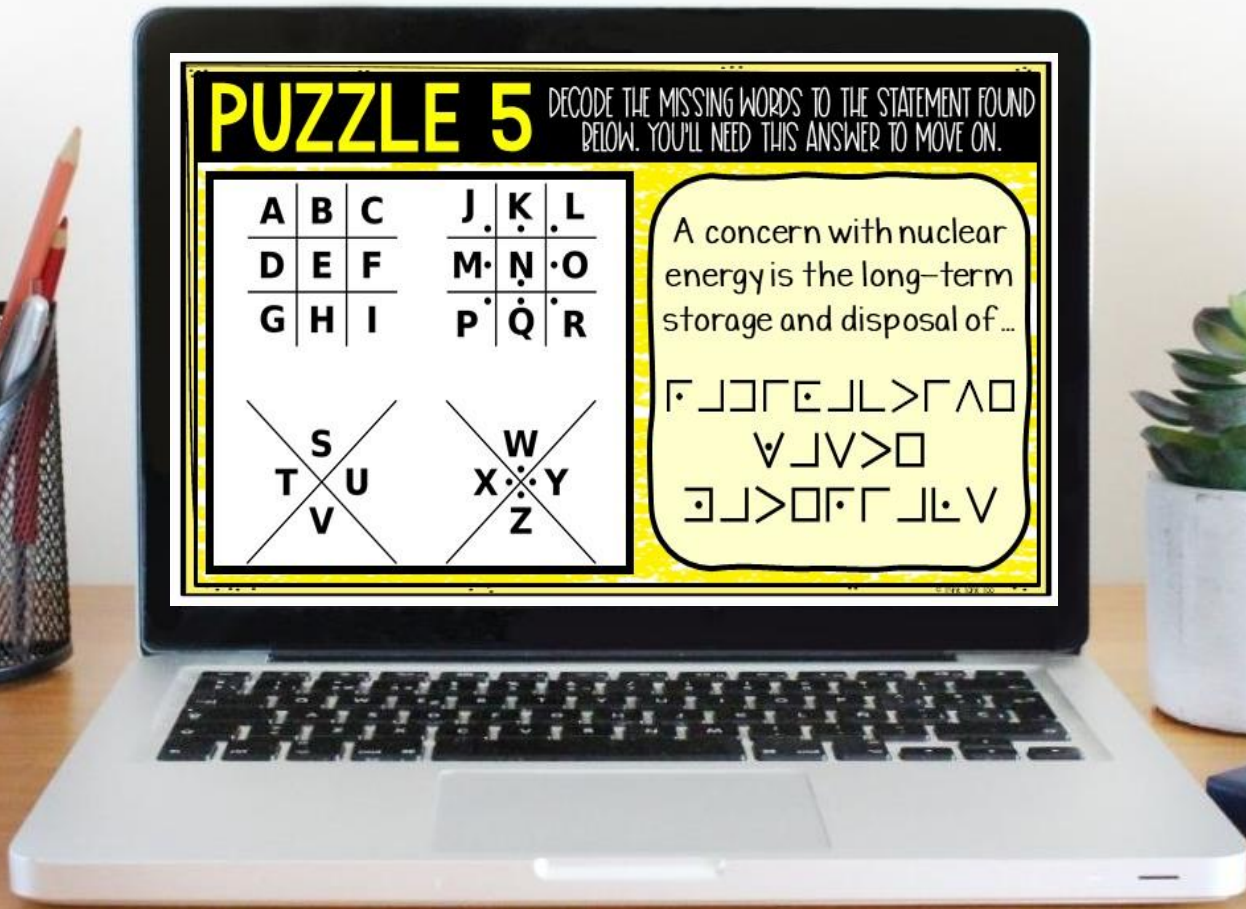
DECODE THE MISSING WORDS TO THE STATEMENT FOUND BELOW. YOU'LL NEED THIS ANSWER TO MOVE ON.

A	B	C	J	K	L
D	E	F	M	N	O
G	H	I	P	Q	R

S	W
T	X
U	Y
V	Z

A concern with nuclear energy is the long-term storage and disposal of...

⋄ ⋄ ⋄ ⋄ ⋄ ⋄ ⋄ ⋄ ⋄ ⋄
⋄ ⋄ ⋄ ⋄ ⋄ ⋄ ⋄ ⋄
⋄ ⋄ ⋄ ⋄ ⋄ ⋄ ⋄ ⋄



6 PASSAGES

In physics, energy is a property of matter. Energy is a physical quantity that can be measured using various units depending on the type of energy being measured. The most commonly used units of energy include joules, calories, kilowatt-hours, and electron volts.

Matter describes the physical objects all around us. Energy is power that allows things to do work or how things change and move. All molecules have energy which is transferred from one thing to another. Molecules are tiny particles which everything in the universe is made of. Living things need energy to grow and move and this energy is received through food. Similarly, objects also need energy to work. Energy is found in eight major forms: kinetic, chemical, electrical, heat, light, sound, gravitational, and nuclear.

Energy plays a crucial role in many natural and human-made processes. Each type has unique characteristics and applications.

12 QUESTIONS

MULTIPLE CHOICE AND SHORT ANSWER

How is energy measured?

- Joules
- Kilowatt-hours
- Calories
- All of the above

In physics, energy is a property of ____.

Type answer here

6 PUZZLES

Should students get "stuck" on a puzzle, hint cards can be found throughout the escape room.

PUZZLE 6 DECODE THE MISSING BELOW. YOU'LL FIND THE KEY TO THE NEXT ROOM.

	1	2	3	4	5
1	D	B	E		C
2	K		H	I/J	F
3		P	N	O	M
4	T	R		Q	S
5		Z	X	V	W

Example: The letter "C" would be 5-1.

PUZZLE 1 DECODE THE MISSING BELOW. YOU'LL FIND THE KEY TO THE NEXT ROOM.

Birds cannot locate these items.

🍏	-A	🍷	-E	🍷	-I	🍷	-M
🍏	-B	🍷	-F	🍷	-J	🍷	-N
🍷	-C	🍷	-G	🍷	-K	🍷	-O
🍷	-D	🍷	-H	🍷	-L	🍷	-P

PUZZLE 3 DECODE THE MISSING BELOW. YOU'LL FIND THE KEY TO THE NEXT ROOM.

In the Outer Court

2-1, 1-4, 1-3 3-6, 1-9 1-5,

PUZZLE 5 DECODE THE MISSING BELOW. YOU'LL FIND THE KEY TO THE NEXT ROOM.

A	B	C	J	K	L
D	E	F	M	N	O
G	H	I	P	Q	R

~~S~~ ~~T~~ ~~U~~ ~~V~~ ~~W~~ ~~X~~ ~~Y~~ ~~Z~~

PUZZLE 4 DECODE THE MISSING WORD BELOW. YOU'LL NEED THE KEY TO THE NEXT ROOM.

The In
is b
KZ
V
GIZM

PUZZLE 2 DECODE THE MISSING BELOW. YOU'LL FIND THE KEY TO THE NEXT ROOM.

1	2	3
4	5	6
7	8	9

Back in the day, you would have to press the number multiple times to find a letter to send a text message.

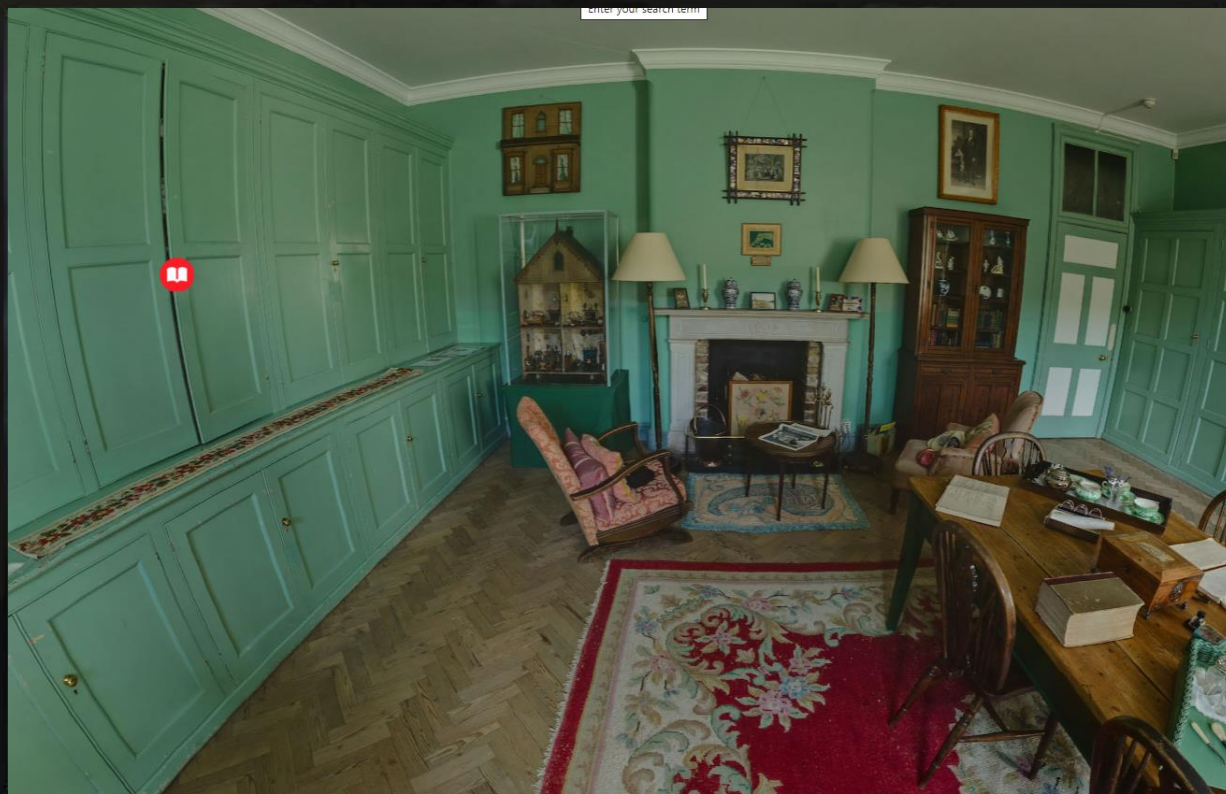
SAMPLE

Test the link and solve some
TEACHER PUZZLES!

[CLICK HERE](#)

360° VIEW

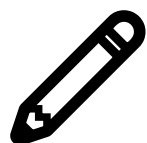
DRAG THE MOUSE OR KEYPAD TO MOVE THE SCREEN FOR A 360° VIEW!



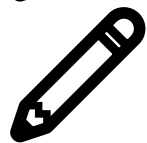
WHAT'S INCLUDED?

- ✓ 6 SHORT READING PASSAGES
- ✓ 12 QUESTIONS TOTAL
- ✓ 6 PUZZLES
- ✓ STUDENT DIRECTIONS (DIGITAL)
- ✓ TEACHER ANSWER KEY
- ✓ PUZZLE HINTS
- ✓ URL LINK TO SHARE ON ANY LMS

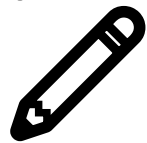
WHAT'S NEEDED?



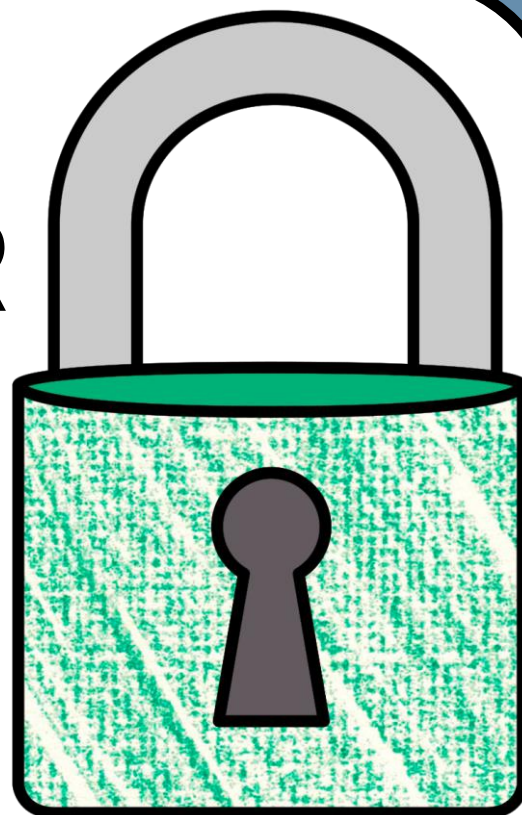
SCRATCH PAPER



PENCILS



INTERNET



BENEFITS OF USE



SELF-GRADING



IMMEDIATE STUDENT FEEDBACK



PAPERLESS



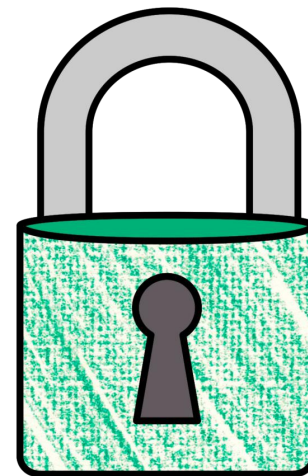
NO PREP



SAVES YOU TIME



CRITICAL THINKING



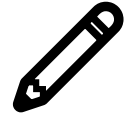
OPTIONS FOR USE



FRONT-LOADING



GROUP STATIONS



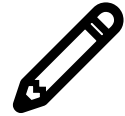
SUB PLANS



UNIT REVIEW



ENRICHMENT ACTIVITY



TEAMWORK ACTIVITY



REWARD ACTIVITY

