

# ANCIENT GREECE



**DIGITAL ESCAPE**

# COLOR CODE

DRAG AND DROP the elements to fill in the Reading Passage,  
then enter the COLOR CODE.

three

literature

Olympic Games

Hellenistic

Hellenes

Greece is a country in southeastern Europe that still exists today. It is a peninsula surrounded by the Mediterranean Sea on three sides. The ancient Greeks referred to themselves as '\_\_\_\_\_ ' and the area of Greece was known as 'Hellas'. Ancient Greece was the birthplace of modern philosophy, \_\_\_\_\_, drama, mathematics, and mythology. Historians often divide ancient Greece into \_\_\_\_\_ periods: the Archaic Period, the Classical Period, and the Hellenistic Period. The Archaic Period included the start of the \_\_\_\_\_, as well as Homer's epic poems. The Classical Period was known for philosophers like Socrates and Plato. When Alexander the Great died, the generals divided his empire. The divisions led to fighting and began the \_\_\_\_\_ Period.





# 9 CHALLENGES

After successfully completing each challenge students will earn a number for the final lock code.

**Nice job sleuth!**

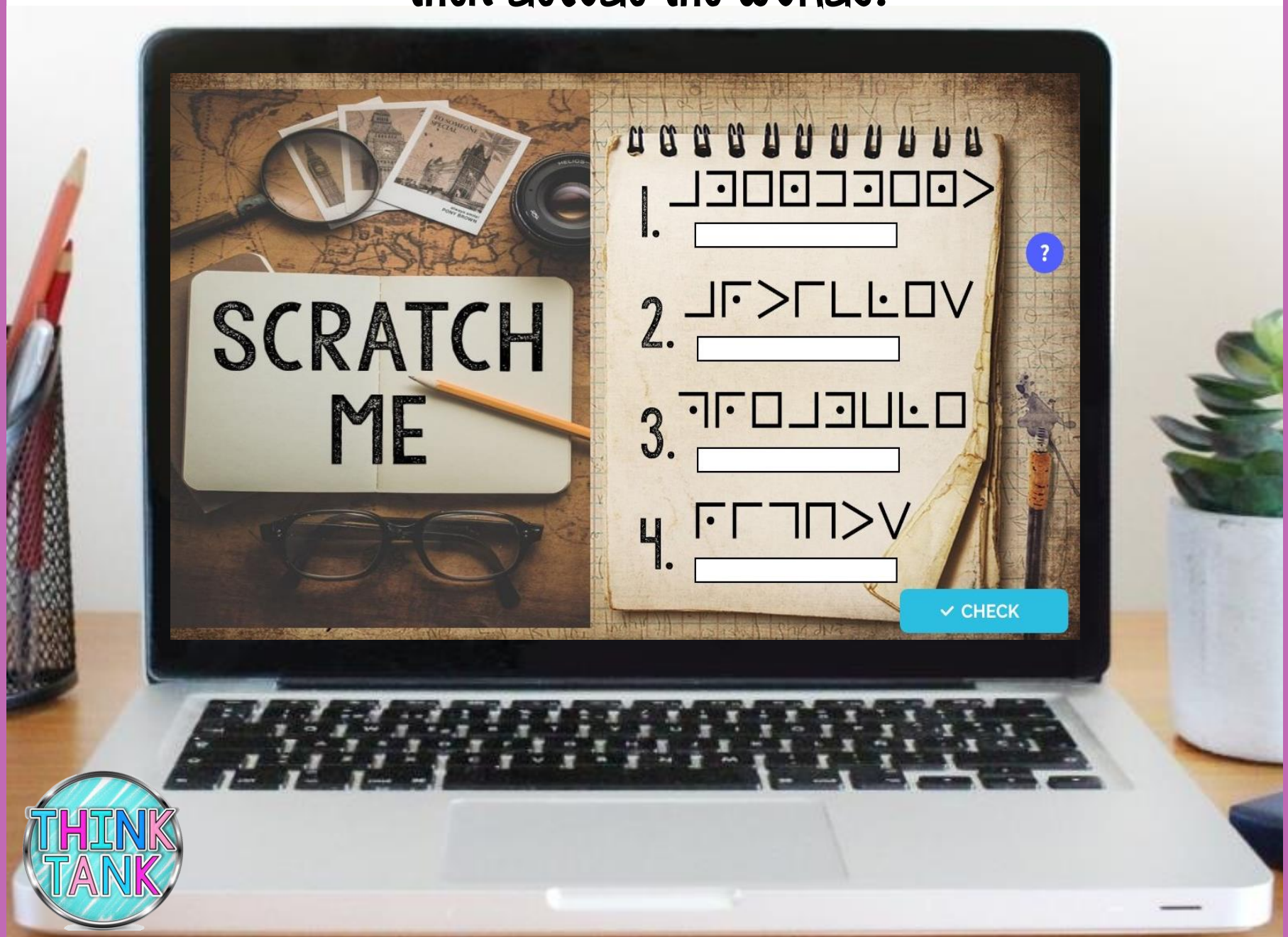
**4**

**CONTINUE**



# PIGPEN CIPHER


Reveal a decoder hidden beneath the image on the left,  
then decode the words.





# 6 PASSAGES

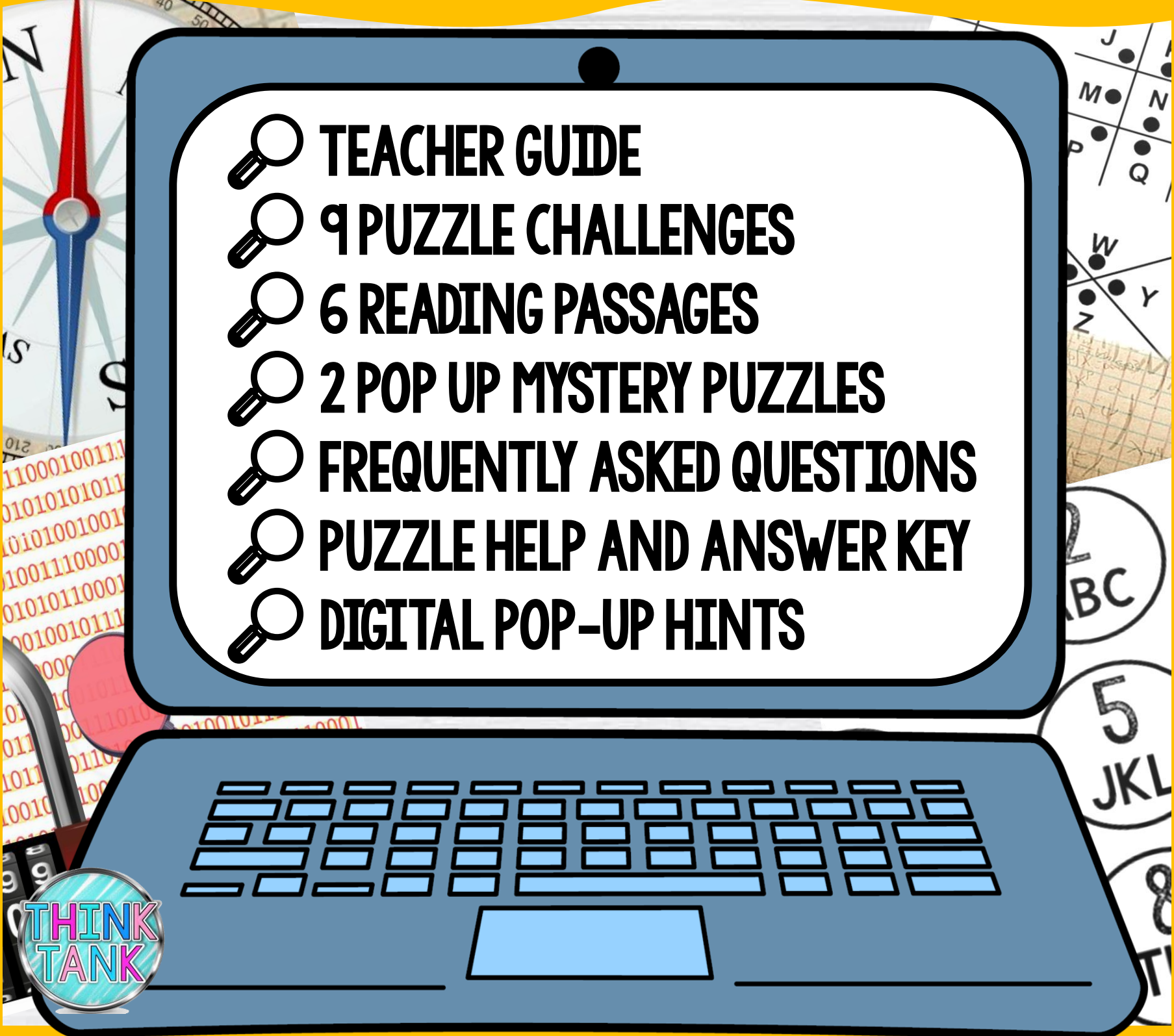
Students will read 6 short passages about the topic,  
then answer questions.



The ancient Greeks were not a united people. Instead, they lived in city-states, with Sparta and Athens being the most powerful. Corinth, Thebes, Argos, Delphi, and Rhodes were also vital parts of ancient Greece. Each city-state had its own government and laws. Most city-states had an acropolis, or a city built on top of a hill. Every city-state believed the twelve most important Greek gods lived on Mount Olympus. Warring between the city-states was common with Athens and Sparta fighting the Peloponnesian War for 27 years. Soldiers in ancient Greece were called hoplites and wore up to 70 pounds of armor. Male Spartans began military training around age 7 and were expected to serve until they were 60 years old. Sparta was focused on war, while Athens focused on literature, science, philosophy, and arts.



# WHAT'S INCLUDED?

- 
- TEACHER GUIDE
  - 9 PUZZLE CHALLENGES
  - 6 READING PASSAGES
  - 2 POP UP MYSTERY PUZZLES
  - FREQUENTLY ASKED QUESTIONS
  - PUZZLE HELP AND ANSWER KEY
  - DIGITAL POP-UP HINTS

THINK  
TANK



# CLICK AND BYE

Students will eliminate false answers to reveal  
a four-digit code to move on.

Sparta was  
focused on war, while  
Athens focused on  
literature, science,  
philosophy, and arts.

Each city-state had  
its own government  
and laws.

Philosophy is an  
ancient Greek word  
that means 'love of  
words.'

**CLICK ON  
THE FALSE  
STATEMENTS TO  
ELIMINATE THEM AND  
REVEAL A CODE.**

Historians often  
divide ancient  
Greece  
into seven periods.

The ancient Greeks  
developed an  
alphabet  
for writing that  
included 36 letters.

The Classical Period  
was known for  
philosophers like  
Socrates and Plato.

An epic poem is a  
piece of literature  
that was meant to be  
delivered out loud.

Plato was a student  
of Socrates, while  
Aristotle was a  
student of Plato.

Greece is a country  
in southeastern  
Europe surrounded by  
the Caribbean Sea.

**CONTINUE**





# REVEAL

Students will drag the flashlight to reveal hidden images.





# SAMPLE

Test the Link and solve some  
TEACHER PUZZLES!

**CLICK HERE**



# PUZZLE TYPES

QWERTY  
TEXT MESSAGE  
CLICK & BYE  
JIGSAW

COLOR CODE  
DRAG & DROP  
CIPHER  
DIRECTIONAL





# QUESTIONS

- 🔍 5 FILL IN THE BLANK
- 🔍 8 DRAG AND DROP
- 🔍 9 TRUE OR FALSE
- 🔍 6 UNSCRAMBLE WORDS
- 🔍 7 MULTIPLE CHOICE

THINK  
TANK

# JIGSAW

Complete the jigsaw puzzle to reveal a  
FOUR-digit code to move on.

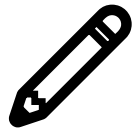




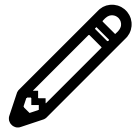
# BENEFITS



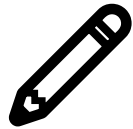
**SELF-GRADING**



**IMMEDIATE STUDENT FEEDBACK**



**PAPERLESS**



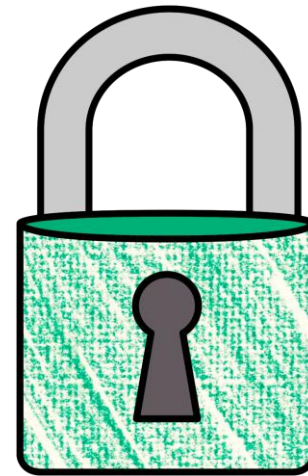
**NO PREP**



**SAVES YOU TIME**



**CRITICAL THINKING**



**THINK  
TANK**

# POP-UPS

Along the way, students will encounter interactive  
MYSTERY POP-UP PUZZLES.

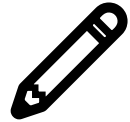




# OPTIONS



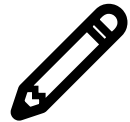
**FRONT-LOADING**



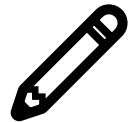
**GROUP STATIONS**



**SUB PLANS**



**UNIT REVIEW**



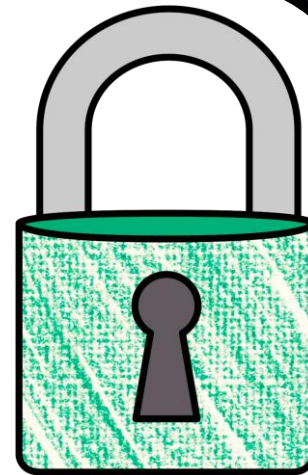
**ENRICHMENT ACTIVITY**



**TEAMWORK ACTIVITY**



**REWARD ACTIVITY**



**THINK  
TANK**

# COLLECT KEYS

After completing each puzzle, students  
will earn a "key"





# FINAL CODE

Students enter the final code 9-digit code  
to crack the case.

ENTER THE  
9 DIGIT CODE TO  
THE THIEF'S VAULT

RETURN

