

# MAJOR LANDFORMS

# DIGITAL ESCAPE™

**PUZZLE 5** DECODE THE MISSING WORDS TO THE STATEMENT FOUND BELOW. YOU'LL NEED THIS ANSWER TO MOVE ON.

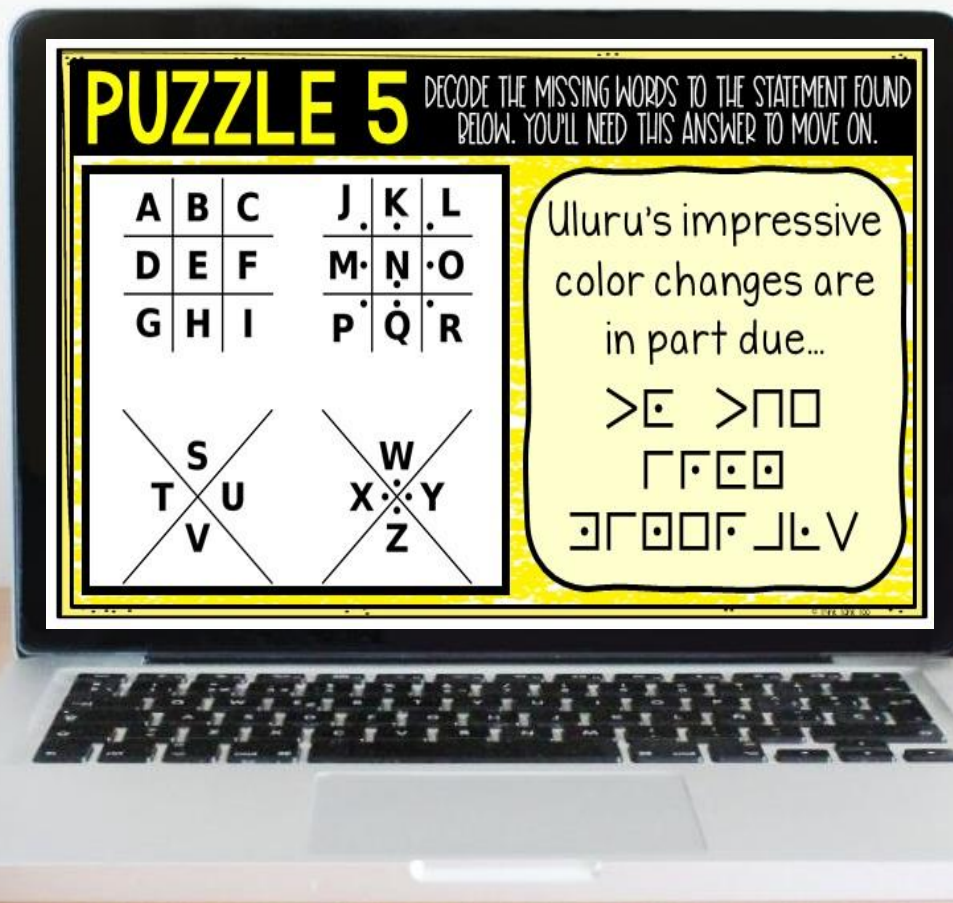
A	B	C	J	K	L
D	E	F	M	N	O
G	H	I	P	Q	R

~~S~~ ~~U~~  
T V

~~W~~ ~~Y~~  
X Z

Uluru's impressive color changes are in part due...

>E >ΠO  
ΓΓ.□□  
ΞΓ□□. J.L.V



# 6 PASSAGES

The world is made up of landforms such as mountains, plateaus, and plains. A landform is defined simply as a natural feature on the Earth's surface that is a part of the terrain.

Mountains are the highest landforms on Earth, found all over the world. Some of the tallest mountains can actually be found or start underwater. Mount Everest, located in Nepal and Tibet, is the tallest mountain above sea level, sitting at 29,032 feet. This massive peak is part of the Himalayan mountain range. But Mauna Kea, located in the Pacific Ocean near Hawaii, is the tallest mountain if you're measuring from base to tip, at 33,500 feet.

Mountains are formed by the movement of tectonic plates, which cause the Earth's crust to push upward, creating towering peaks. Topography is the study of how the land's surface is shaped, including all of its peaks and valleys. The Greek word "topo" means place and "graphia" means writing or recording.

# 12 QUESTIONS

MULTIPLE CHOICE AND SHORT ANSWER

**What range is Mount Everest part of?**

- Alps
- Pyrenees
- Andes
- Himalayan

**What does the Greek word "topo" mean?**

Type answer here

# 6 PUZZLES

Should students get "stuck" on a puzzle, hint cards can be found throughout the escape room.

**PUZZLE 6** DECODE THE MISSING BELOW. YOU'LL NEED THE KEY TO GET OUT.

	1	2	3	4	5
1	D	B	E		C
2	K		H	I/J	F
3		P	N	O	M
4	T	R		Q	S
5		Z	X	V	W

Example: The letter "C" would be 5-1.

**PUZZLE 1** DECODE THE MISSING BELOW. YOU'LL NEED THE KEY TO GET OUT.

Birds cannot lo

- A   - E   - I   - M

- B   - F   - J   - N

- C   - G   - K   - O

- D   - H   - L   - F

**PUZZLE 3** DECODE THE MISSING BELOW. YOU'LL NEED THE KEY TO GET OUT.

In the Outer Court

2-1, 1-4, 1-3   3-6, 1-9   1-5,

**PUZZLE 5** DECODE THE MISSING BELOW. YOU'LL NEED THE KEY TO GET OUT.

A	B	C	J	K	L
D	E	F	M	N	O
G	H	I	P	Q	R

~~S~~   ~~W~~

~~T~~   ~~X~~

~~U~~   ~~Y~~

~~V~~   ~~Z~~

**PUZZLE 4** DECODE THE MISSING WORD BELOW. YOU'LL NEED THE KEY TO GET OUT.

The In  
is b  
KZ  
V  
GIZM

**PUZZLE 2** DECODE THE MISSING WORD BELOW. YOU'LL NEED THE KEY TO GET OUT.

1   2   3

4   5   6

7   8   9

Back in the day, you would have to press the number multiple times to find a letter to send a text message.

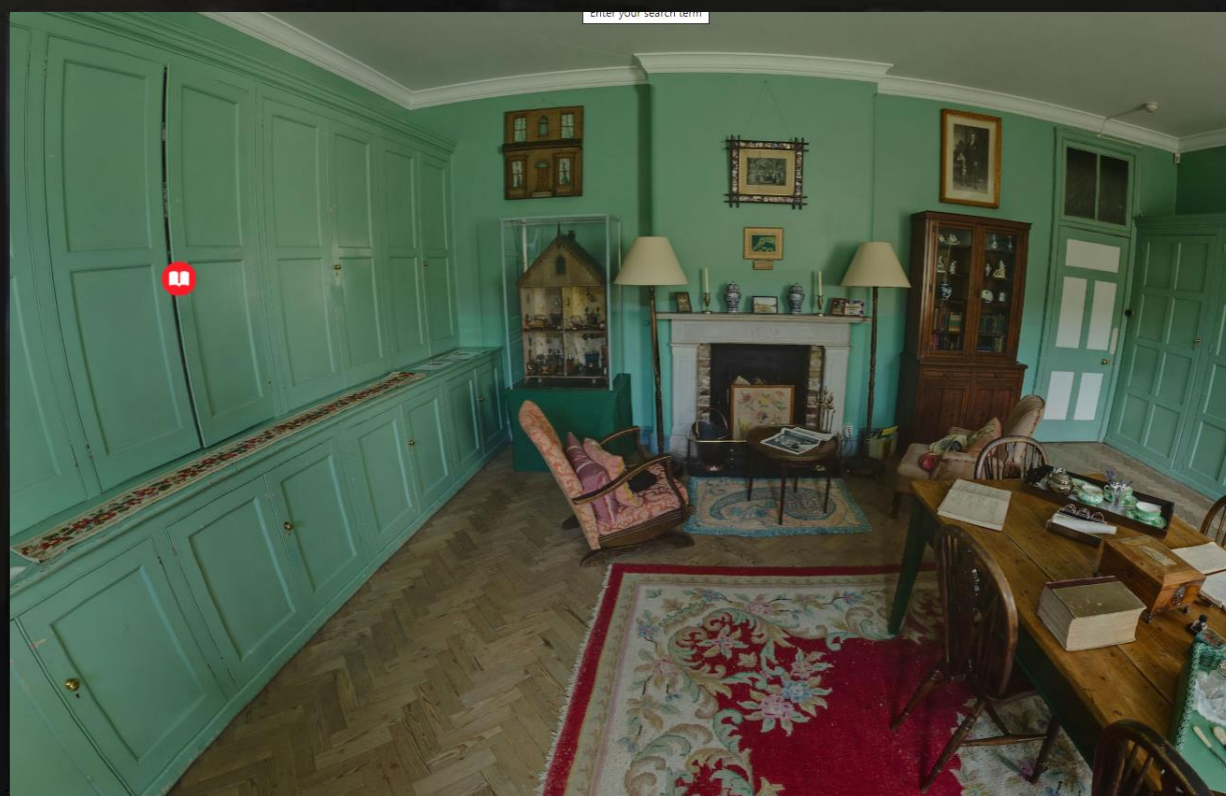
# SAMPLE

Test the link and solve some  
TEACHER PUZZLES!

[CLICK HERE](#)

# 360° VIEW

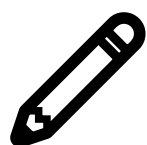
DRAG the mouse OR keypad to move the  
SCREEN FOR a 360° view!



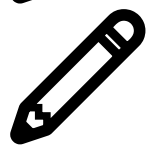
# WHAT'S INCLUDED?

- ✓ 6 SHORT READING PASSAGES
- ✓ 12 QUESTIONS TOTAL
- ✓ 6 PUZZLES
- ✓ STUDENT DIRECTIONS (DIGITAL)
- ✓ TEACHER ANSWER KEY
- ✓ PUZZLE HINTS
- ✓ URL LINK TO SHARE ON ANY LMS

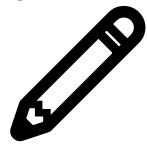
# WHAT'S NEEDED?



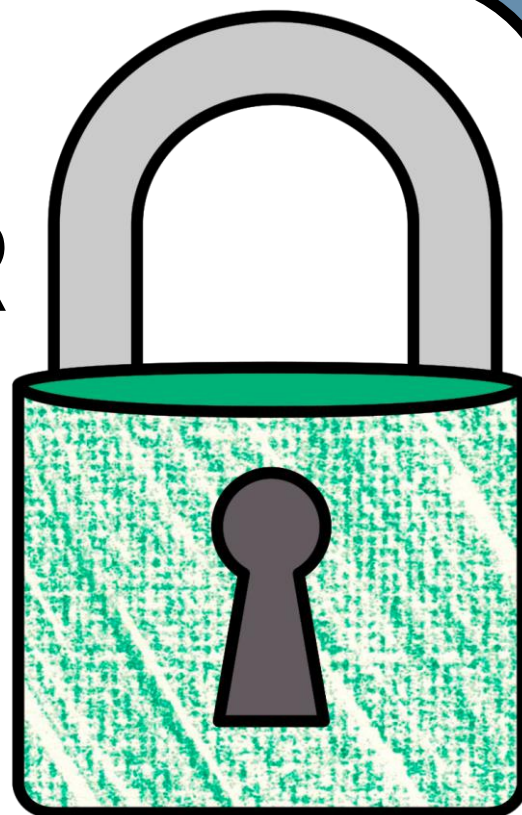
**SCRATCH PAPER**



**PENCILS**



**INTERNET**





# BENEFITS OF USE



**SELF-GRADING**



**IMMEDIATE STUDENT FEEDBACK**



**PAPERLESS**



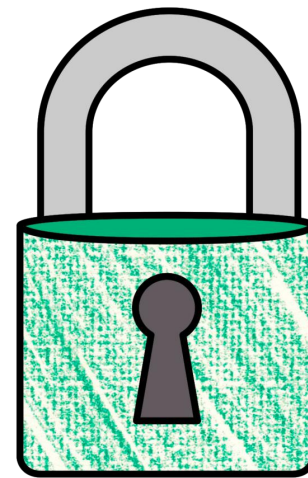
**NO PREP**



**SAVES YOU TIME**



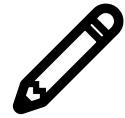
**CRITICAL THINKING**



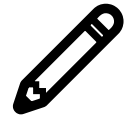
# OPTIONS FOR USE



**FRONT-LOADING**



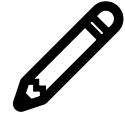
**GROUP STATIONS**



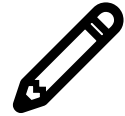
**SUB PLANS**



**UNIT REVIEW**



**ENRICHMENT ACTIVITY**



**TEAMWORK ACTIVITY**



**REWARD ACTIVITY**

