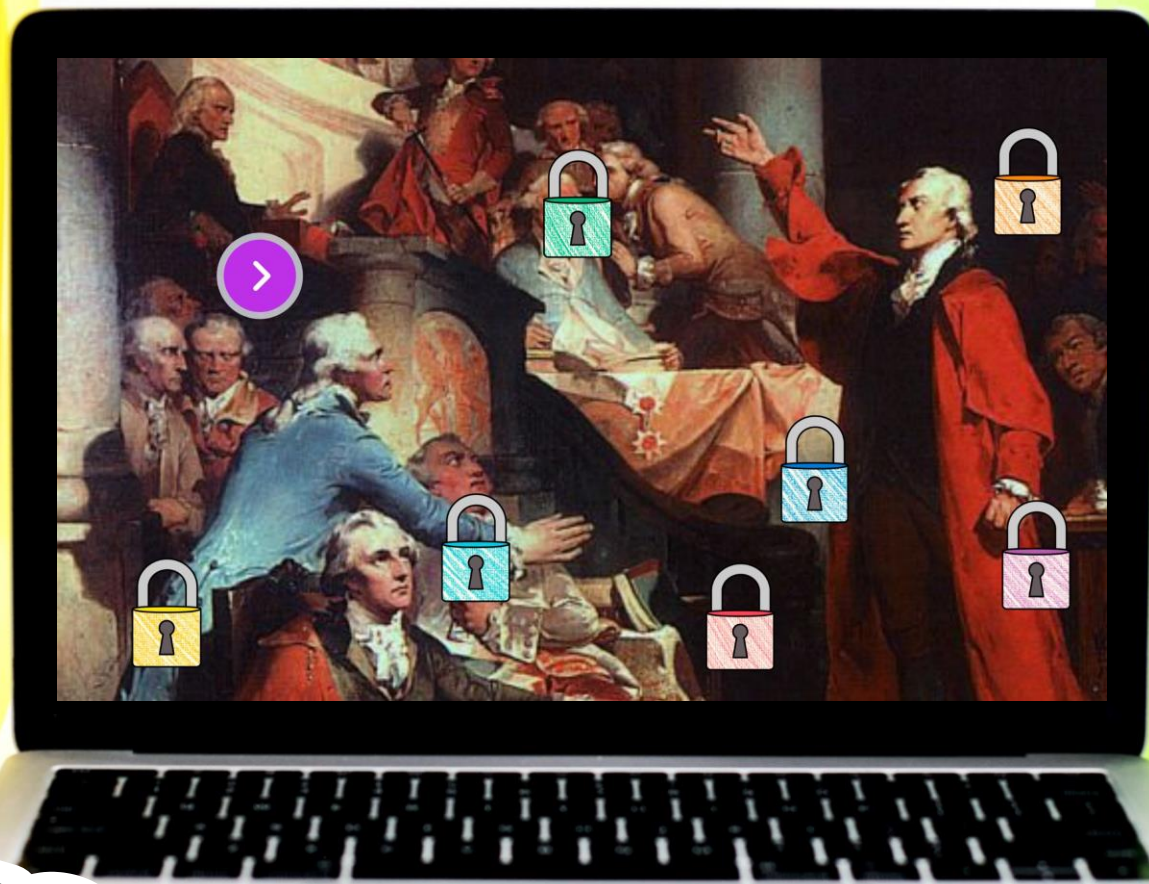


HOUSE OF BURGESSES



DIGITAL ESCAPE TM

COLOR CODE

DRAG AND DROP the elements to fill in the Reading Passage,
then enter the COLOR CODE.

financial

lawbreakers

Jamestown

investors

three hundred

America's first permanent English settlement was established at _____ in 1607, when English settlers moved to the New World. The Colony of Virginia was founded by a joint-stock company called the Virginia Company of London. The Virginia Company was a group of _____ who hoped to profit (make money) from the ventures into the New World. In 1611, a lieutenant governor named Sir Thomas Dale arrived in Virginia with _____ new settlers, soldiers, supplies, livestock, and seeds. Thomas Dale enforced and established Martial Law and strict military codes, inflicting harsh punishment upon _____ in Virginia. In 1616, Sir Thomas Dale sailed back to London to get _____ support. That same year, Sir George Yeardley was designated Deputy Governor of Virginia.



9 CHALLENGES

After successfully completing each challenge students will earn a number for the final lock code.

Nice job sleuth!

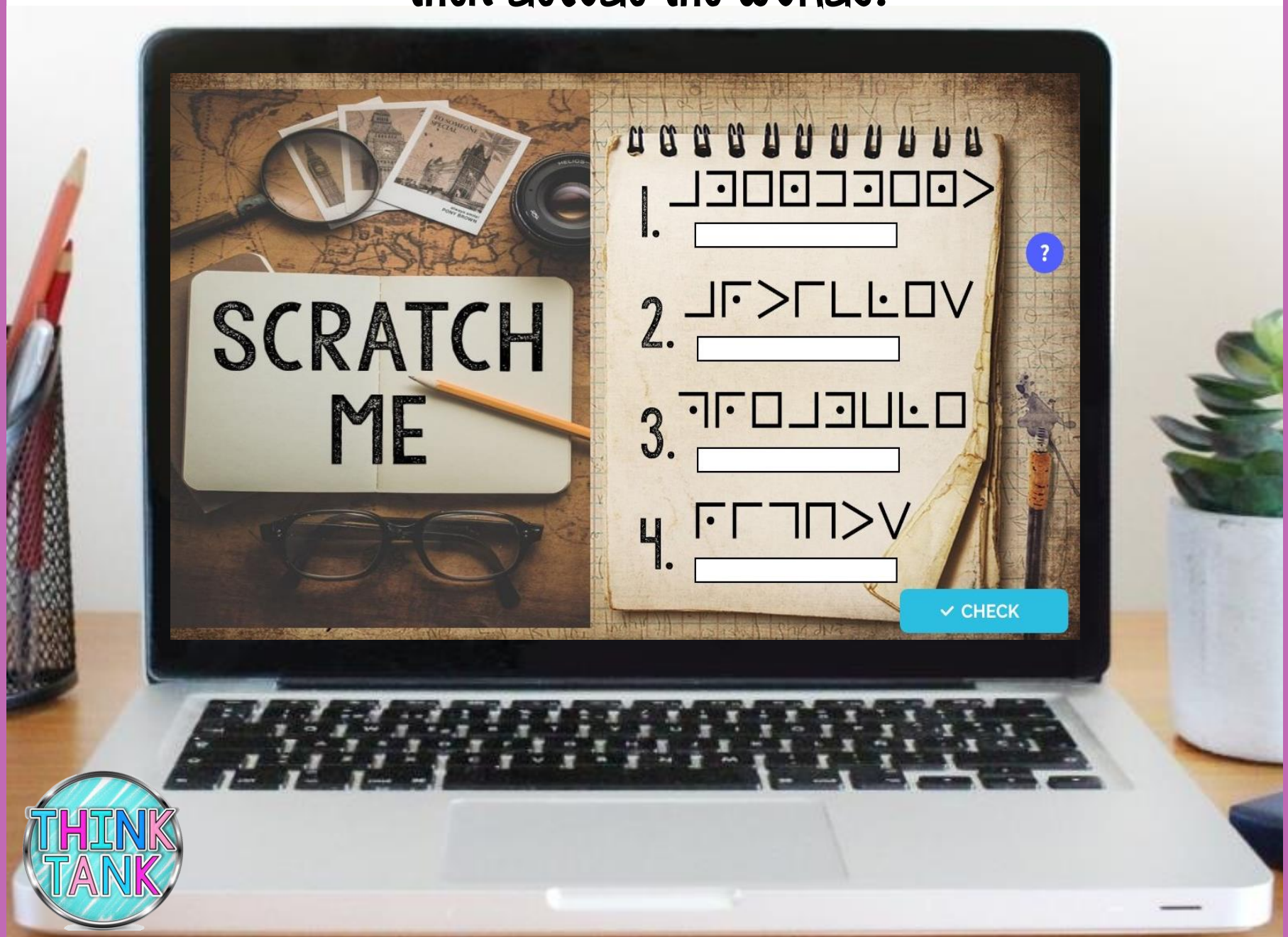
4

CONTINUE



PIGPEN CIPHER

Reveal a decoder hidden beneath the image on the left,
then decode the words.

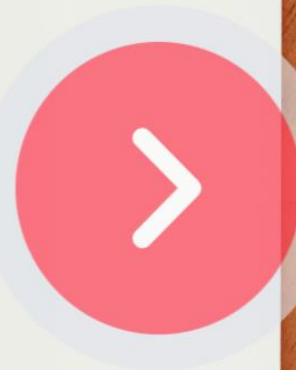


6 PASSAGES

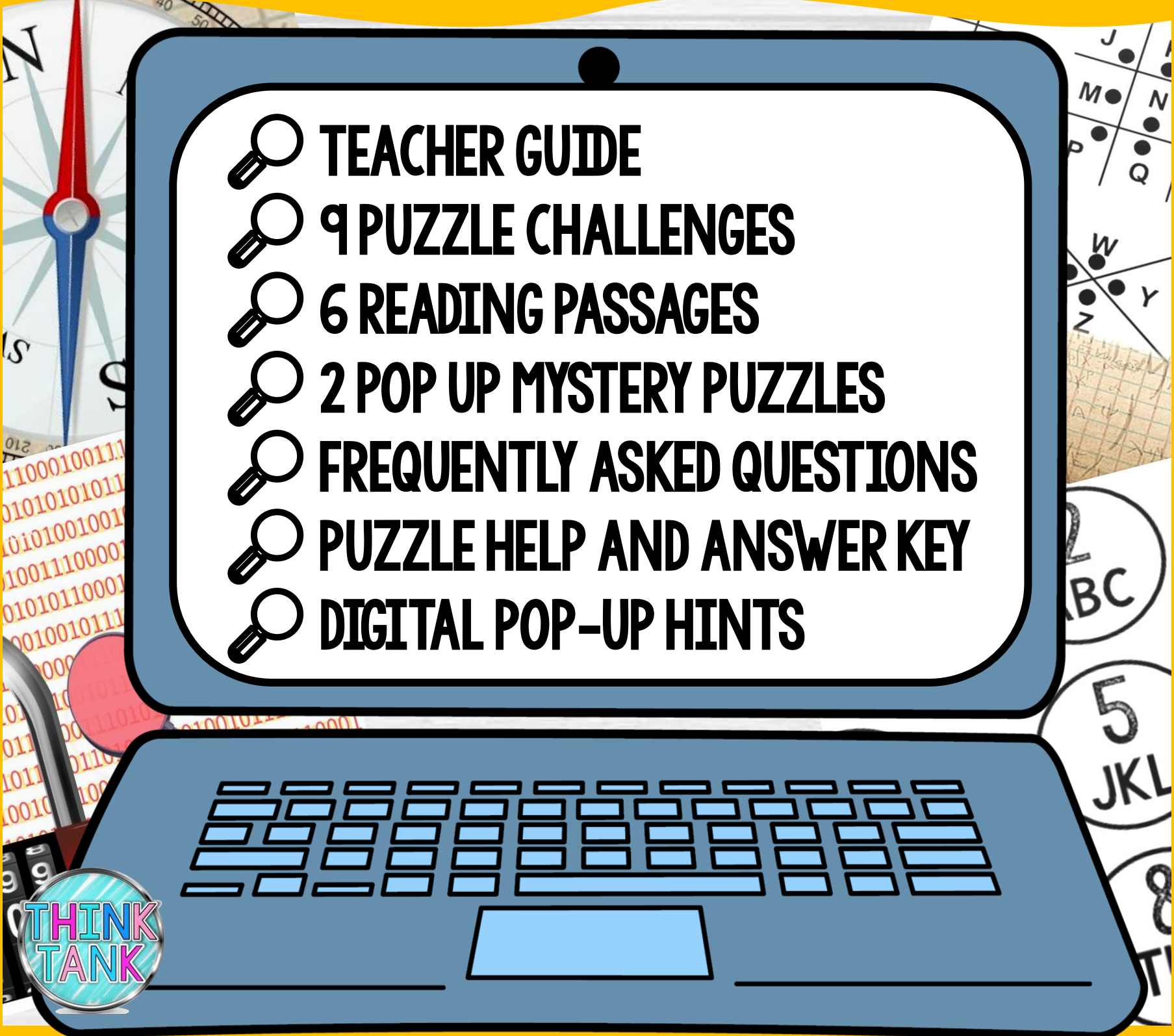
Students will read 6 short passages about the topic,
then answer questions.

There were many notable members of the House of Burgesses. George Washington served in the House of Burgesses for 15 years. He went on to become the commander in chief of the Continental Army during the Revolutionary War, and later the first president of the United States. Patrick Henry was a Patriot who spoke out against the unfair rule of Britain on the colonies. He introduced seven resolutions against the Stamp Act of 1765, known as the Virginia Resolves. The Stamp Act taxed paper goods such as newspapers and playing cards. In 1775, the burgesses listened to Patrick Henry deliver his famous "give me liberty or give me death" speech. Thomas Jefferson represented Albemarle County and served in the House from 1769-1775.

ennially



WHAT'S INCLUDED?

- 
- TEACHER GUIDE
 - 9 PUZZLE CHALLENGES
 - 6 READING PASSAGES
 - 2 POP UP MYSTERY PUZZLES
 - FREQUENTLY ASKED QUESTIONS
 - PUZZLE HELP AND ANSWER KEY
 - DIGITAL POP-UP HINTS

THINK
TANK

CLICK AND BYE

Students will eliminate false answers to reveal
a four-digit code to move on.



REVEAL

Students will drag the flashlight to reveal hidden images.



SAMPLE

Test the Link and solve some
TEACHER PUZZLES!

CLICK HERE



PUZZLE TYPES

QWERTY
TEXT MESSAGE
CLICK & BYE
JIGSAW

COLOR CODE
DRAG & DROP
CIPHER
DIRECTIONAL



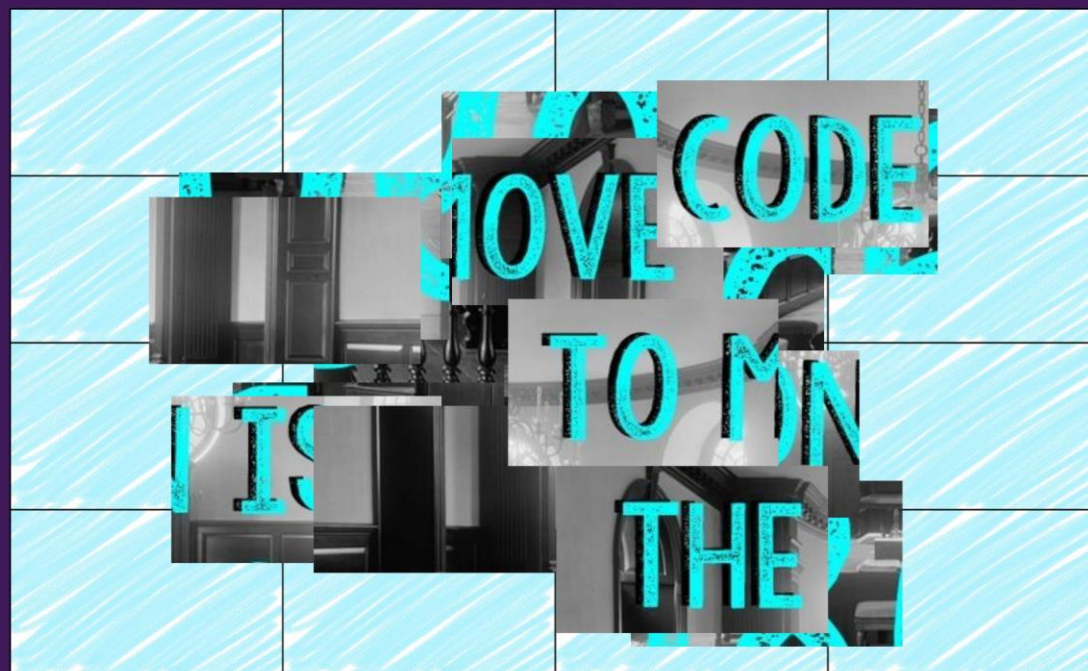
QUESTIONS

- 🔍 5 FILL IN THE BLANK
- 🔍 8 DRAG AND DROP
- 🔍 9 TRUE OR FALSE
- 🔍 6 UNSCRAMBLE WORDS
- 🔍 7 MULTIPLE CHOICE

THINK
TANK

JIGSAW

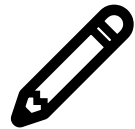
Complete the jigsaw puzzle to reveal a
FOUR-digit code to move on.



BENEFITS



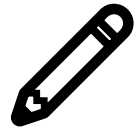
SELF-GRADING



IMMEDIATE STUDENT FEEDBACK



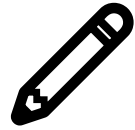
PAPERLESS



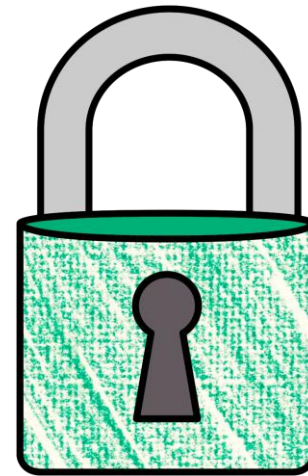
NO PREP



SAVES YOU TIME



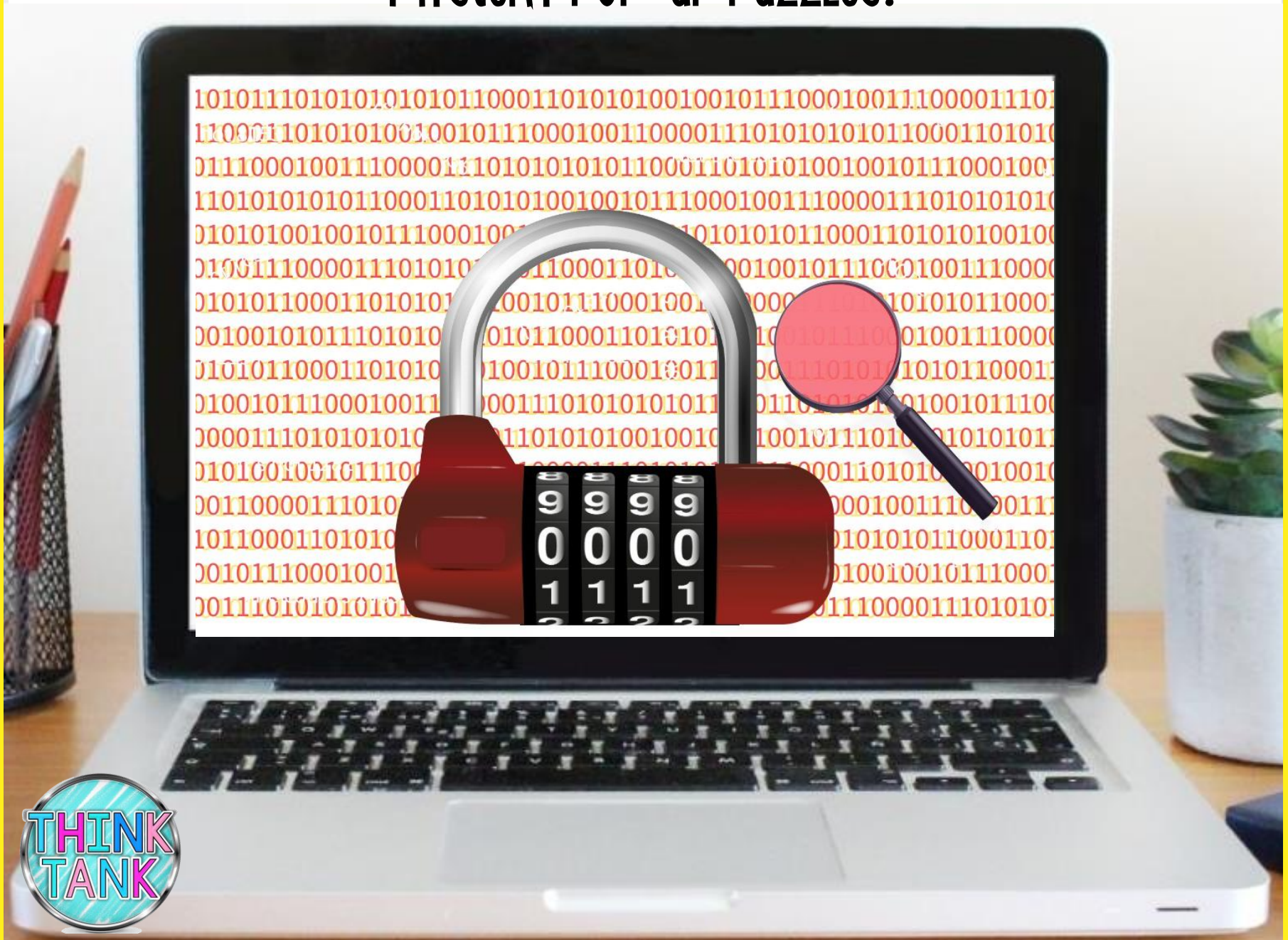
CRITICAL THINKING



**THINK
TANK**

POP-UPS

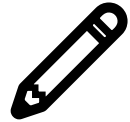
Along the way, students will encounter interactive
mystery pop-up puzzles.



OPTIONS



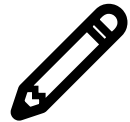
FRONT-LOADING



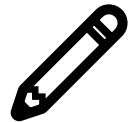
GROUP STATIONS



SUB PLANS



UNIT REVIEW



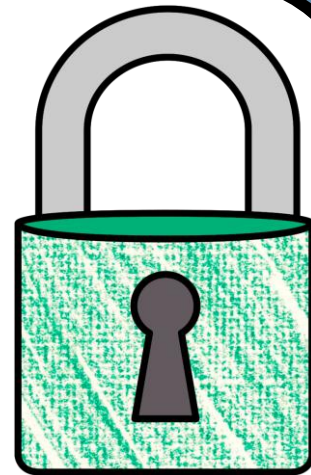
ENRICHMENT ACTIVITY



TEAMWORK ACTIVITY



REWARD ACTIVITY



**THINK
TANK**

COLLECT KEYS

After completing each puzzle, students
will earn a "key"



FINAL CODE

Students enter the final code 9-digit code
to crack the case.

ENTER THE
9 DIGIT CODE TO
THE THIEF'S VAULT

RETURN

