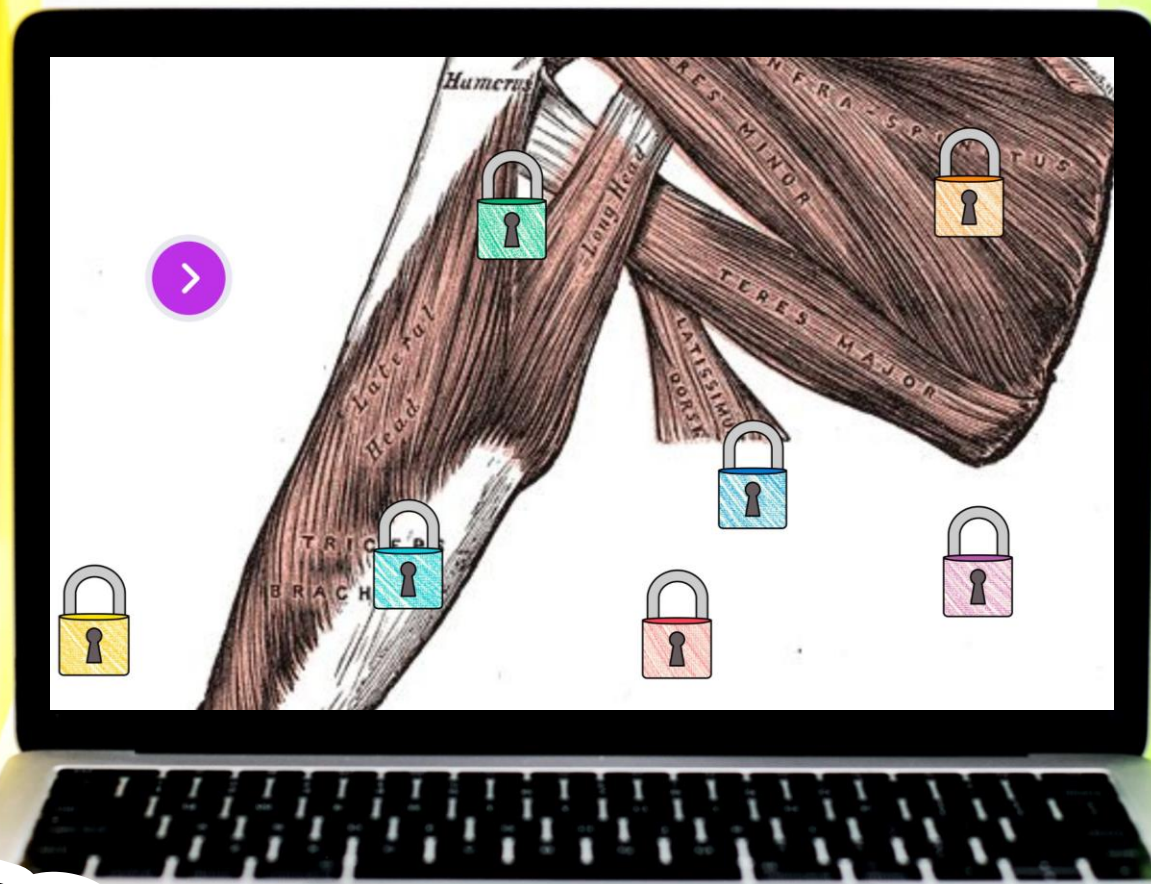


# MUSCULAR SYSTEM



TM

# DIGITAL ESCAPE

# COLOR CODE

DRAG AND DROP the elements to fill in the reading passage,  
then enter the COLOR CODE.

mouse      made up      skin

energy      11

Each of the \_\_\_\_\_ systems in the human body are important to help us live and function, and the muscular system is no exception. The muscular system is composed (\_\_\_\_\_) of more than 600 muscles. Muscles are what we use to move around. They are located all over the body underneath the \_\_\_\_\_. Some muscles work without a person thinking, such as the heart that pumps blood, while others we have to actively move such as the leg muscles when walking across the street. The word muscle comes from the Latin word *musculus*, which means "little \_\_\_\_\_." Muscles work when the brain sends signals to them to move. Proteins and chemicals in the body give them \_\_\_\_\_ to either contract, tighten or relax.

\_\_\_\_\_

\_\_\_\_\_

\_\_\_\_\_

\_\_\_\_\_

\_\_\_\_\_



# 9 CHALLENGES

After successfully completing each challenge students will earn a number for the final lock code.

Nice job sleuth!

4

CONTINUE



# PIGPEN CIPHER

REVEAL A DECODER HIDDEN BENEATH THE IMAGE ON THE LEFT,  
THEN DECODE THE WORDS.

SCRATCH ME

1.

2.

3.

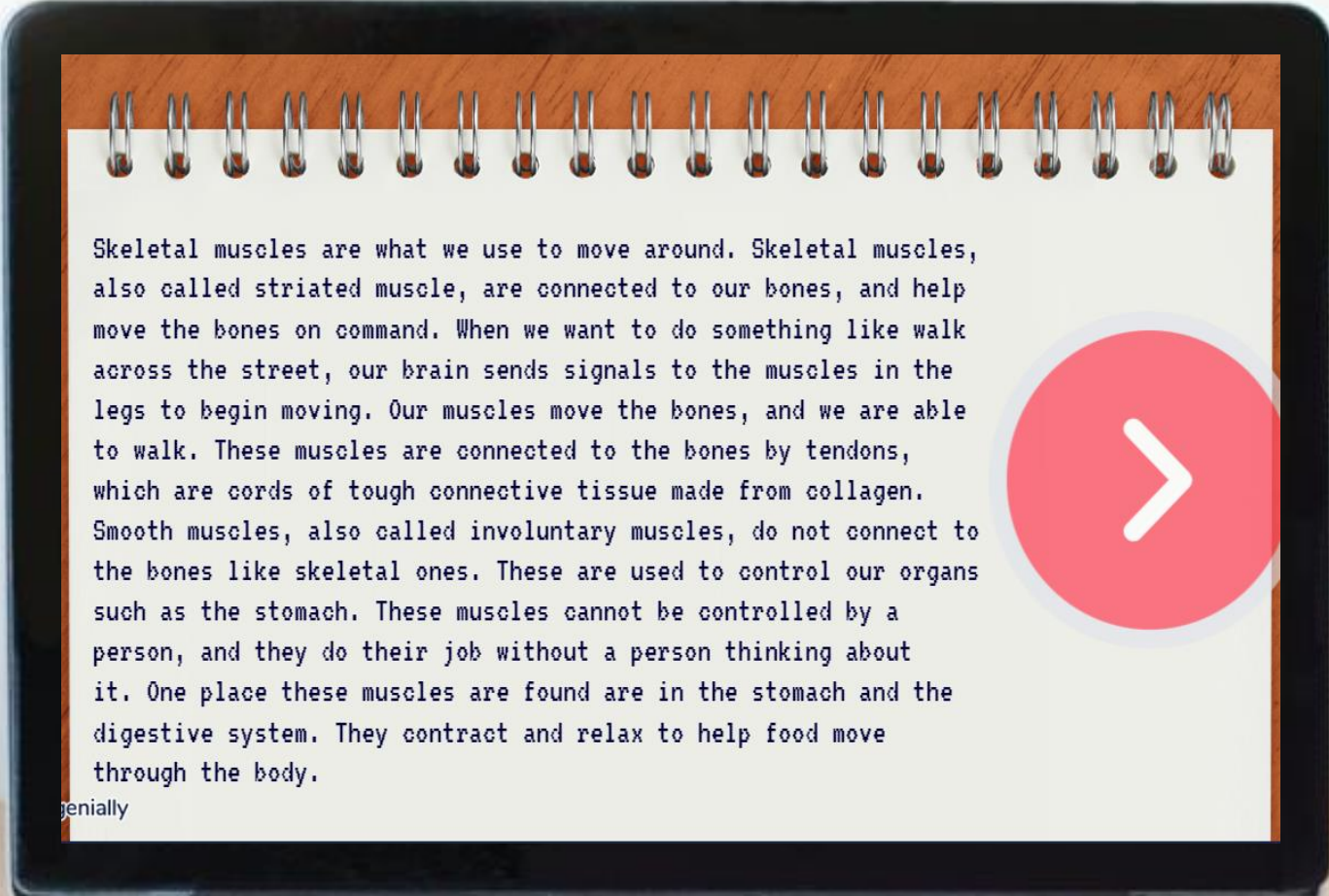
4.

✓ CHECK



# 6 PASSAGES

Students will read 6 short passages about the topic,  
then answer questions.










Skeletal muscles are what we use to move around. Skeletal muscles, also called striated muscle, are connected to our bones, and help move the bones on command. When we want to do something like walk across the street, our brain sends signals to the muscles in the legs to begin moving. Our muscles move the bones, and we are able to walk. These muscles are connected to the bones by tendons, which are cords of tough connective tissue made from collagen. Smooth muscles, also called involuntary muscles, do not connect to the bones like skeletal ones. These are used to control our organs such as the stomach. These muscles cannot be controlled by a person, and they do their job without a person thinking about it. One place these muscles are found are in the stomach and the digestive system. They contract and relax to help food move through the body.

genially



# WHAT'S INCLUDED?

-  **TEACHER GUIDE**
-  **9 PUZZLE CHALLENGES**
-  **6 READING PASSAGES**
-  **2 POP UP MYSTERY PUZZLES**
-  **FREQUENTLY ASKED QUESTIONS**
-  **PUZZLE HELP AND ANSWER KEY**
-  **DIGITAL POP-UP HINTS**

**THINK  
TANK**

# CLICK AND BYE

STUDENTS WILL ELIMINATE FALSE ANSWERS TO REVEAL  
A FOUR-DIGIT CODE TO MOVE ON.

The laptop screen displays a quiz interface with nine false statements arranged in a 3x3 grid. Each statement is contained within a colored rectangular box. To the right of the grid is a larger text block with instructions and a 'CONTINUE' button.

**CLICK ON THE FALSE STATEMENTS TO ELIMINATE THEM AND REVEAL A CODE.**

**CONTINUE**

Smooth muscles are used to control our organs.

Smooth muscles are found in the stomach and the digestive system.

Cardiac muscles are also called striated muscles.

Muscles are connected to the bones by alveoli.

Tendons are cords of tough connective tissue made from cartilage.

The human body has eleven body systems.

Smooth muscles are also called involuntary muscles.

Skeletal muscles are connected to our bones.

Smooth muscles can be controlled by a person.



# REVEAL

STUDENTS WILL DRAG THE FLASHLIGHT TO REVEAL  
HIDDEN IMAGES.





# SAMPLE

Test the link and solve some  
TEACHER PUZZLES!

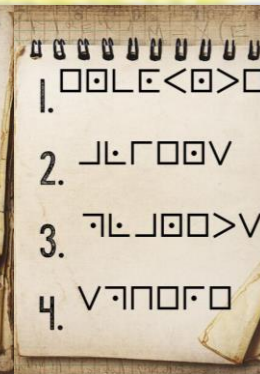
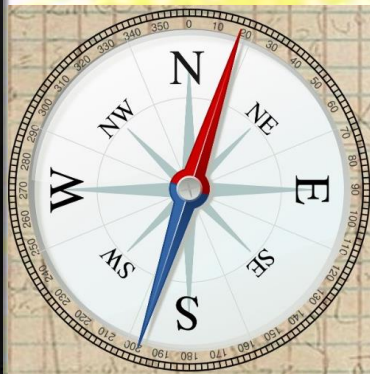
[CLICK HERE](#)








# PUZZLE TYPES

QWERTY  
TEXT MESSAGE  
CLICK & BYE  
JIGSAW

COLOR CODE  
DRAG & DROP  
CIPHER  
DIRECTIONAL

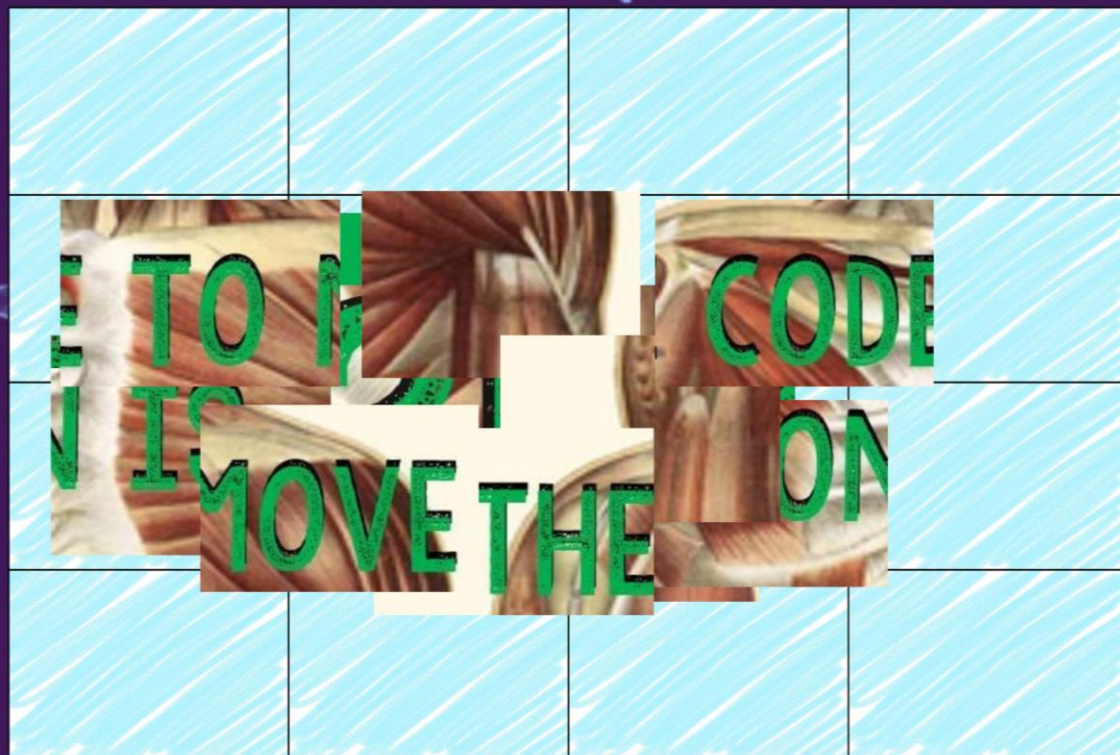


# QUESTIONS

-  5 FILL IN THE BLANK
-  8 DRAG AND DROP
-  9 TRUE OR FALSE
-  6 UNSCRAMBLE WORDS
-  7 MULTIPLE CHOICE

# JIGSAW

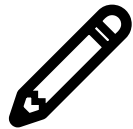
COMPLETE THE JIGSAW PUZZLE TO REVEAL A  
FOUR-DIGIT CODE TO MOVE ON.



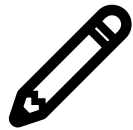
# BENEFITS



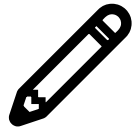
**SELF-GRADING**



**IMMEDIATE STUDENT FEEDBACK**



**PAPERLESS**



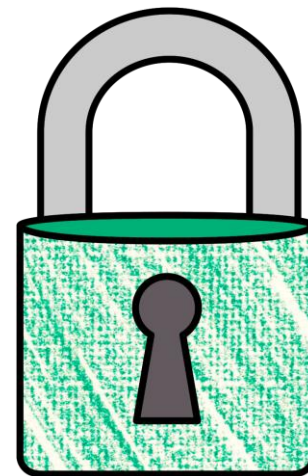
**NO PREP**



**SAVES YOU TIME**



**CRITICAL THINKING**



**THINK  
TANK**

# POP-UPS

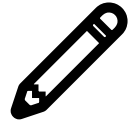
ALONG THE WAY, STUDENTS WILL ENCOUNTER INTERACTIVE  
MYSTERY POP-UP PUZZLES.



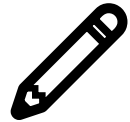
# OPTIONS



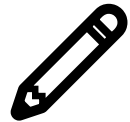
**FRONT-LOADING**



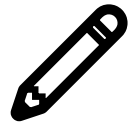
**GROUP STATIONS**



**SUB PLANS**



**UNIT REVIEW**



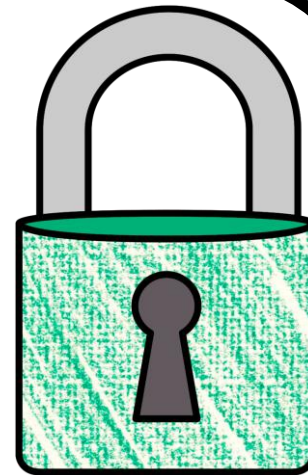
**ENRICHMENT ACTIVITY**



**TEAMWORK ACTIVITY**



**REWARD ACTIVITY**



**THINK  
TANK**

# COLLECT KEYS

After completing each puzzle, students  
will earn a "key"





# FINAL CODE

STUDENTS ENTER THE FINAL CODE 9-DIGIT CODE  
TO CRACK THE CASE.

ENTER THE  
9 DIGIT CODE TO  
THE THIEF'S VAULT

RETURN

