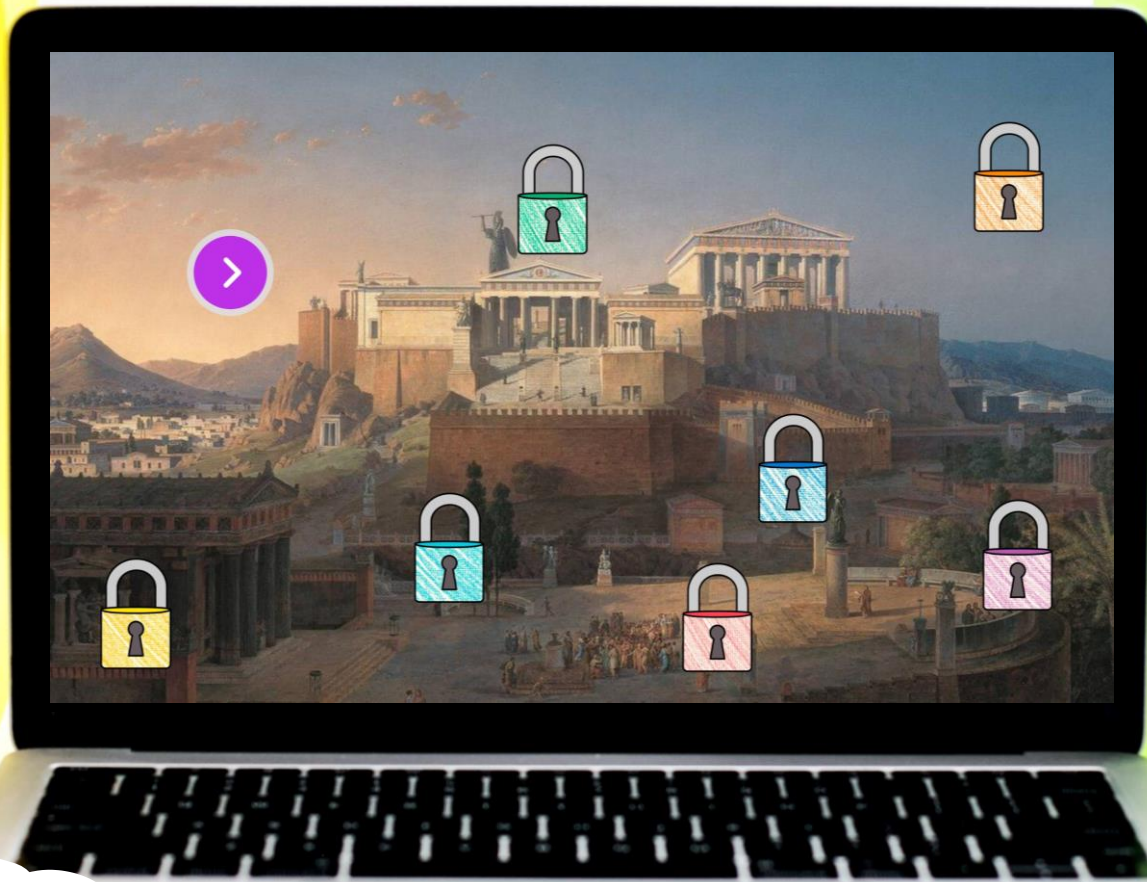


GREEK CITY-STATES



TM

DIGITAL ESCAPE

COLOR CODE

DRAG AND DROP the elements to fill in the reading passage, then enter the COLOR CODE.

wall Athens 1,000
Mount Olympus ruler

In Ancient Greece there was no one _____ over the whole country. Instead, each major city was responsible for ruling itself and the smaller cities, farmland, and country estates around it. The two most important city-states in Ancient Greece were _____ and Sparta, but Corinth, Thebes, Argos, Delphi, and Rhodes were also vital parts of Ancient Greece along with nearly _____ others. A city-state, also called a "polis," had an urban center, or city center that branched out into the neighboring countryside. There was often a _____ built around the center of the city for protection from enemies of the city-state. The city centers, or acropolis, were built inside the walls, on the top of a hill. Every citystate believed the twelve most important Greek gods lived on _____.



9 CHALLENGES

After successfully completing each challenge students will earn a number for the final lock code.

Nice job sleuth!

4

CONTINUE

**THINK
TANK**

PIGPEN CIPHER

Reveal a decoder hidden beneath the image on the left, then decode the words.

SCRATCH ME

1.

2.

3.

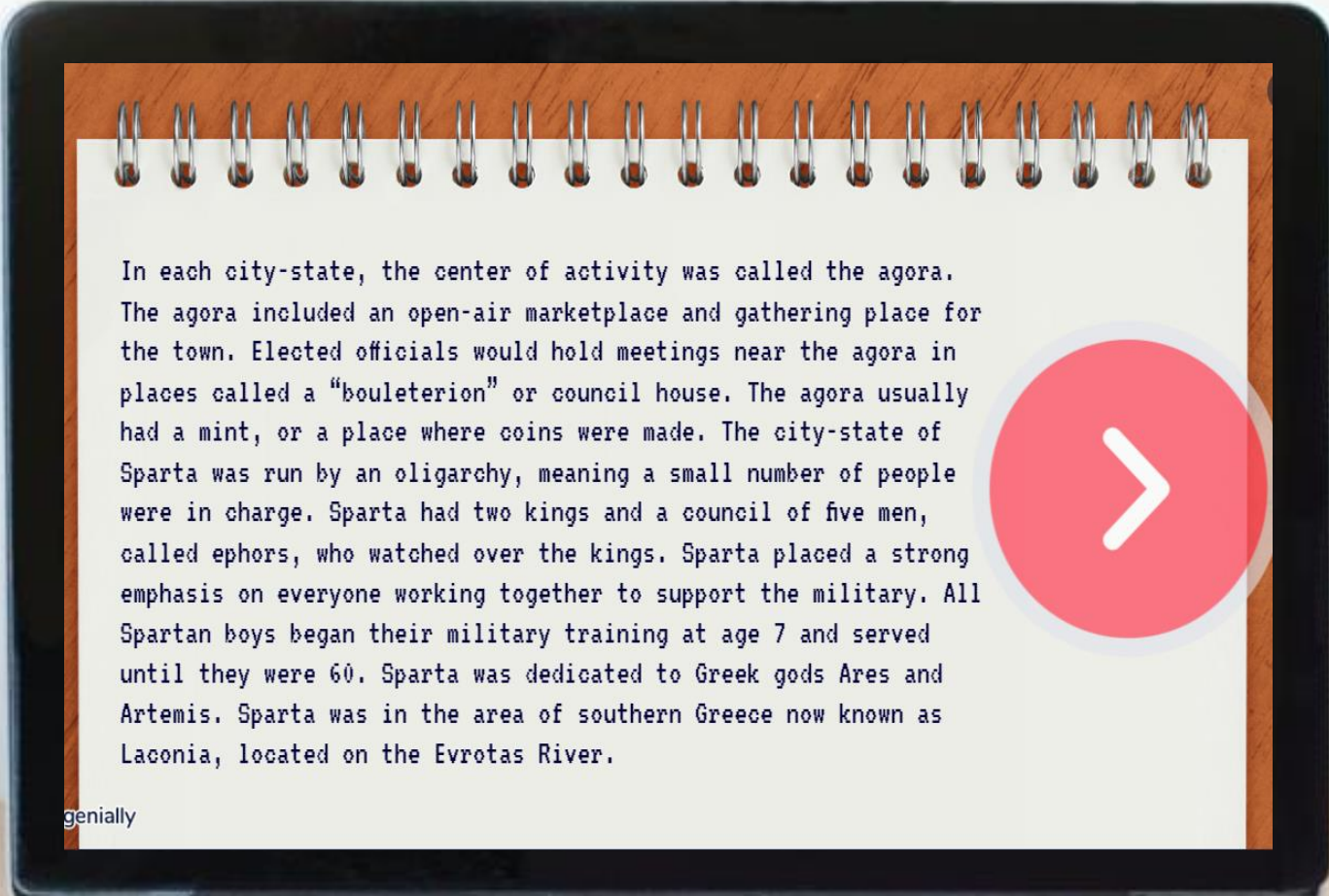
4.

✓ CHECK



6 PASSAGES

Students will read 6 short passages about the topic,
then answer questions.










In each city-state, the center of activity was called the agora. The agora included an open-air marketplace and gathering place for the town. Elected officials would hold meetings near the agora in places called a "bouleterion" or council house. The agora usually had a mint, or a place where coins were made. The city-state of Sparta was run by an oligarchy, meaning a small number of people were in charge. Sparta had two kings and a council of five men, called ephors, who watched over the kings. Sparta placed a strong emphasis on everyone working together to support the military. All Spartan boys began their military training at age 7 and served until they were 60. Sparta was dedicated to Greek gods Ares and Artemis. Sparta was in the area of southern Greece now known as Laconia, located on the Evrotas River.

genially



WHAT'S INCLUDED?

-  **TEACHER GUIDE**
-  **9 PUZZLE CHALLENGES**
-  **6 READING PASSAGES**
-  **2 POP UP MYSTERY PUZZLES**
-  **FREQUENTLY ASKED QUESTIONS**
-  **PUZZLE HELP AND ANSWER KEY**
-  **DIGITAL POP-UP HINTS**

**THINK
TANK**

CLICK AND BYE

Students will eliminate false answers to reveal
a four-digit code to move on.

Another word for god or goddess is deities.

The people of Attica chose Athena as their patroness.

Athens hosted a contests between Zeus and Hera.

Athens was run by an oligarchy, or group of men.

The city-state of Athens was in a region called Amarna.

Athena gave the city an olive tree.

Poseidon gave the city a saltwater fountain and spring.

Athens used fast ships called "triremes."

The Parthenon was dedicated to Aphrodite.

CLICK ON THE FALSE STATEMENTS TO ELIMINATE THEM AND REVEAL A CODE.

CONTINUE



REVEAL

Students will drag the flashlight to reveal hidden images.



SAMPLE

Test the link and solve some
TEACHER PUZZLES!

[CLICK HERE](#)








PUZZLE TYPES

QWERTY
TEXT MESSAGE
CLICK & BYE
JIGSAW

COLOR CODE
DRAG & DROP
CIPHER
DIRECTIONAL

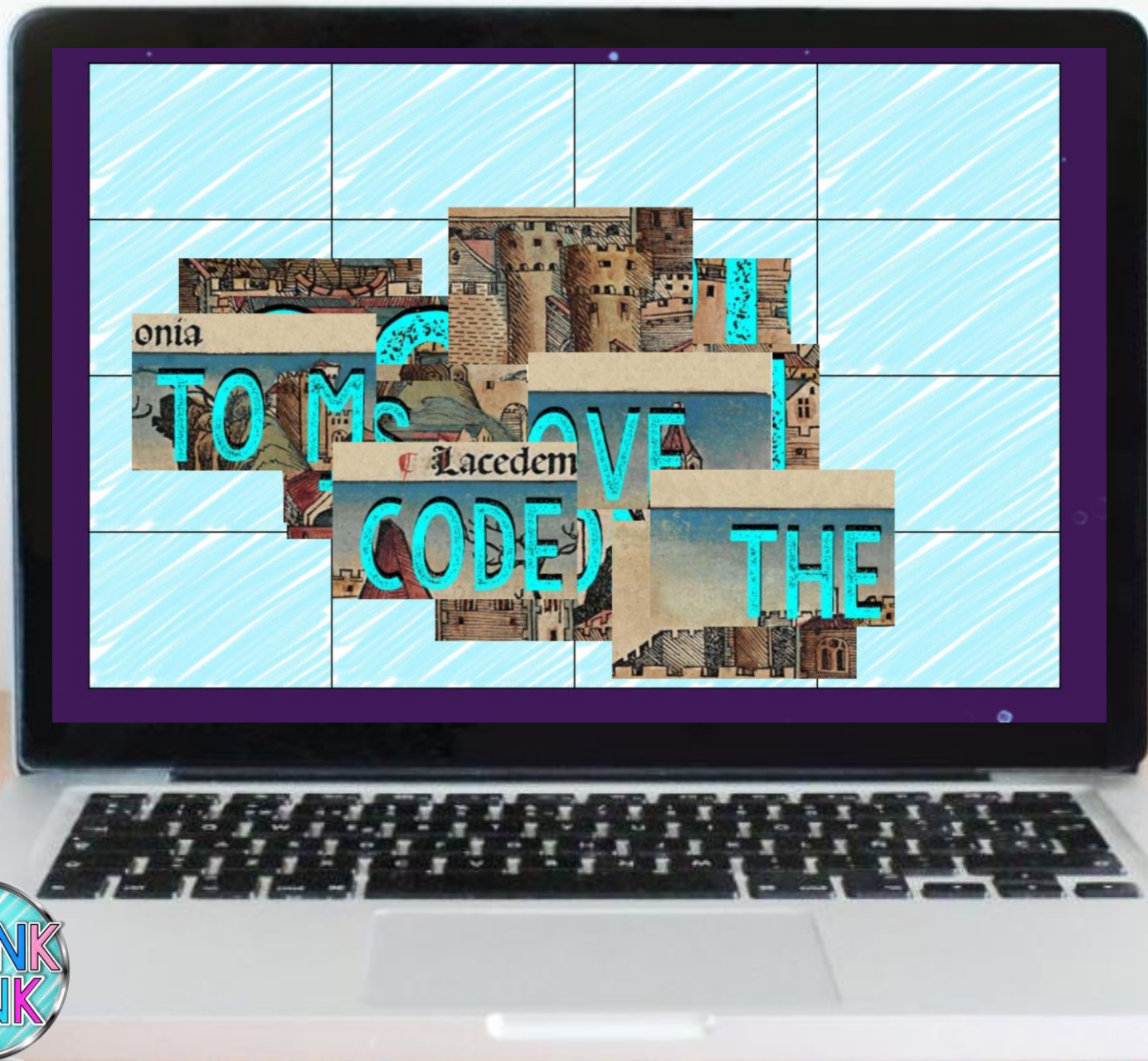


QUESTIONS

-  5 FILL IN THE BLANK
-  8 DRAG AND DROP
-  9 TRUE OR FALSE
-  6 UNSCRAMBLE WORDS
-  7 MULTIPLE CHOICE

JIGSAW

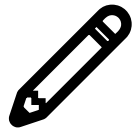
COMPLETE THE JIGSAW PUZZLE TO REVEAL A
FOUR-DIGIT CODE TO MOVE ON.



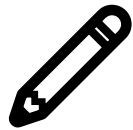
BENEFITS



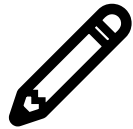
SELF-GRADING



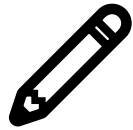
IMMEDIATE STUDENT FEEDBACK



PAPERLESS



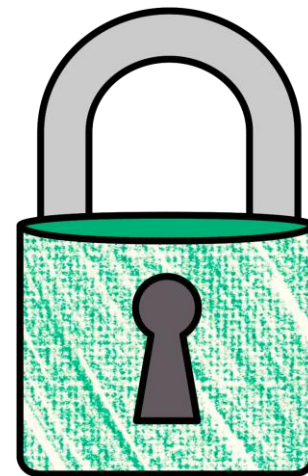
NO PREP



SAVES YOU TIME



CRITICAL THINKING



**THINK
TANK**

POP-UPS

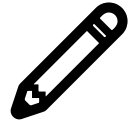
ALONG THE WAY, STUDENTS WILL ENCOUNTER INTERACTIVE
MYSTERY POP-UP PUZZLES.



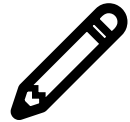
OPTIONS



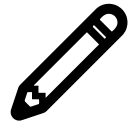
FRONT-LOADING



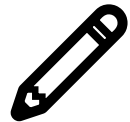
GROUP STATIONS



SUB PLANS



UNIT REVIEW



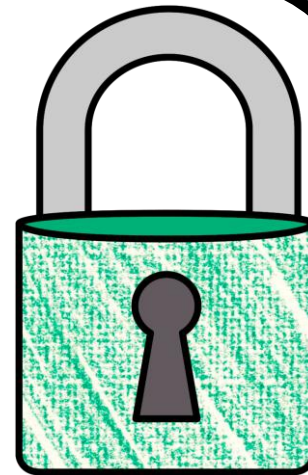
ENRICHMENT ACTIVITY



TEAMWORK ACTIVITY



REWARD ACTIVITY



**THINK
TANK**

COLLECT KEYS

After completing each puzzle, students will earn a "key"



FINAL CODE

STUDENTS ENTER THE FINAL CODE 9-DIGIT CODE
TO CRACK THE CASE.

ENTER THE
9 DIGIT CODE TO
THE THIEF'S VAULT

RETURN

