

13 COLONIES

DIGITAL ESCAPE™

PUZZLE 5

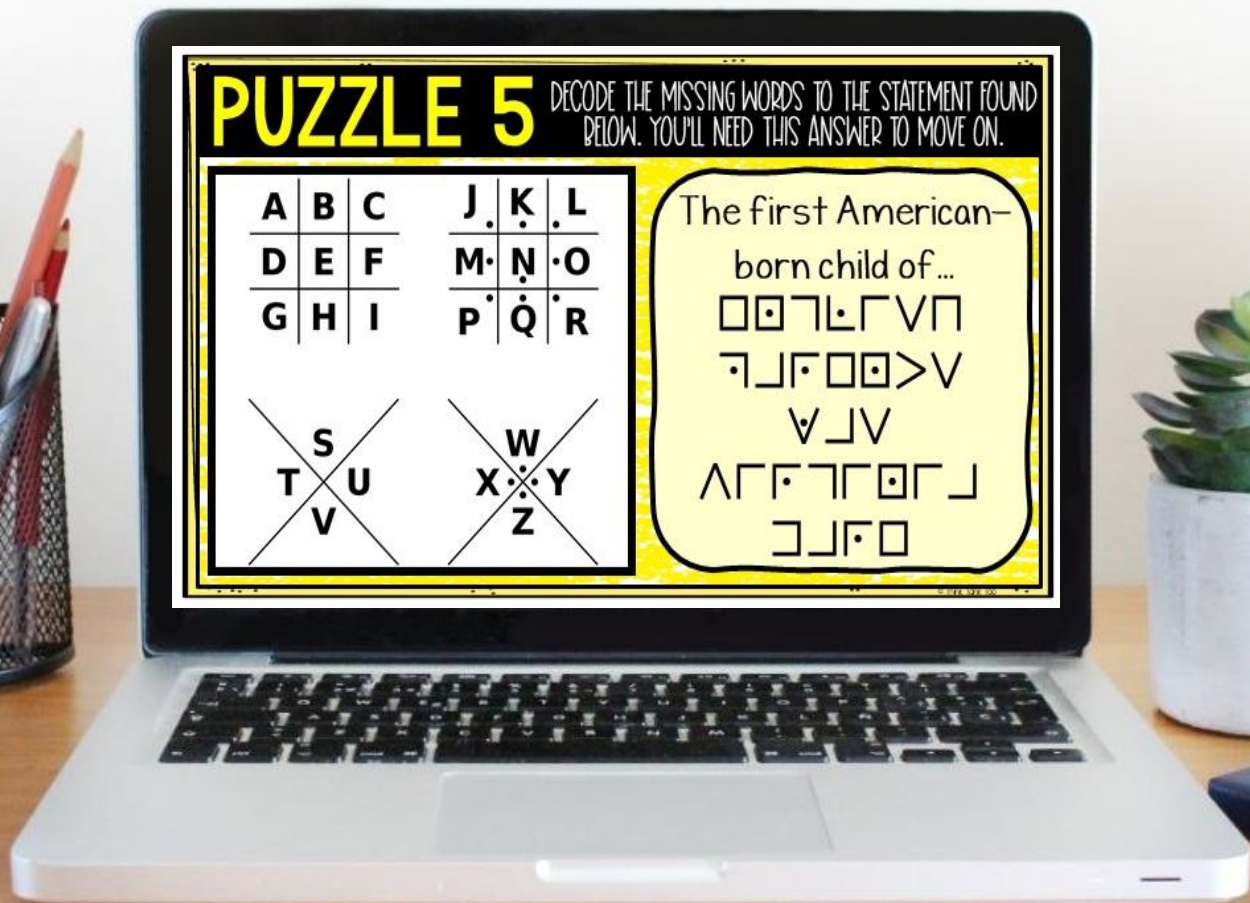
DECODE THE MISSING WORDS TO THE STATEMENT FOUND BELOW. YOU'LL NEED THIS ANSWER TO MOVE ON.

A	B	C	J	K	L
D	E	F	M	N	O
G	H	I	P	Q	R

S	U	W	Y
T	V	X	Z

The first American-born child of...

□□□□□□□□
□□□□□□□□
□□□□
□□□□□□□□
□□□□



6 PASSAGES

A colony is a territory or piece of land that is settled by groups of people but is governed by another country. The United States started off as 13 original colonies ruled by Great Britain and King George III, before becoming its own country. The 13 colonies were all located along the Atlantic coast.

The colonies brought people for different reasons, including religious freedom, money, and a fresh start. No matter the reason, more and more settlers went to America and the colonies were founded one by one.

The original colonies were divided into 3 geographic regions: New England, Middle, and Southern Colonies. New England Colonies included Connecticut, Massachusetts, Rhode Island and New Hampshire. Middle Colonies included New York, Delaware, Pennsylvania, and New Jersey. Southern Colonies included Maryland, Virginia, North Carolina, South Carolina, and Georgia.

12 QUESTIONS

MULTIPLE CHOICE AND SHORT ANSWER

Why did people move to the American colonies?

Religious freedom

Money

Fresh start

All of the above

The 13 colonies were all located along the ___ coast.

Type answer here

6 PUZZLES

Should students get "stuck" on a puzzle, hint cards can be found throughout the escape room.

PUZZLE 6 DECODE THE MISSING BELOW. YOU'LL NEED THE KEY.

	1	2	3	4	5
1	D	B	E		C
2	K		H	I/J	F
3		P	N	O	M
4	T	R		Q	S
5		Z	X	V	W

Example: The letter "C" would be 5-I.

PUZZLE 1 DECODE THE MISSING BELOW. YOU'LL NEED THE KEY.

Birds cannot lo

- A - E - I - N

- B - F - J - M

- C - G - K - L

- D - H - I - J

PUZZLE 3 DECODE THE MISSING BELOW. YOU'LL NEED THE KEY.

In the Outer Court

2-1, 1-4, 1-3 3-6, 1-9 1-5,

PUZZLE 5 DECODE THE MISSING BELOW. YOU'LL NEED THE KEY.

A	B	C	J	K	L
D	E	F	M	N	O
G	H	I	P	Q	R

~~S~~ ~~W~~
T U X Y
V Z

PUZZLE 4 DECODE THE MISSING WORD BELOW. YOU'LL NEED THE KEY.

The In
is b
KZ
V
GIZM

PUZZLE 2 DECODE THE MISSING WORD BELOW. YOU'LL NEED THE KEY.

1 2 3
4 5 6
7 8 9

Back in the day, you would have to press the number multiple times to find a letter to send a text message.

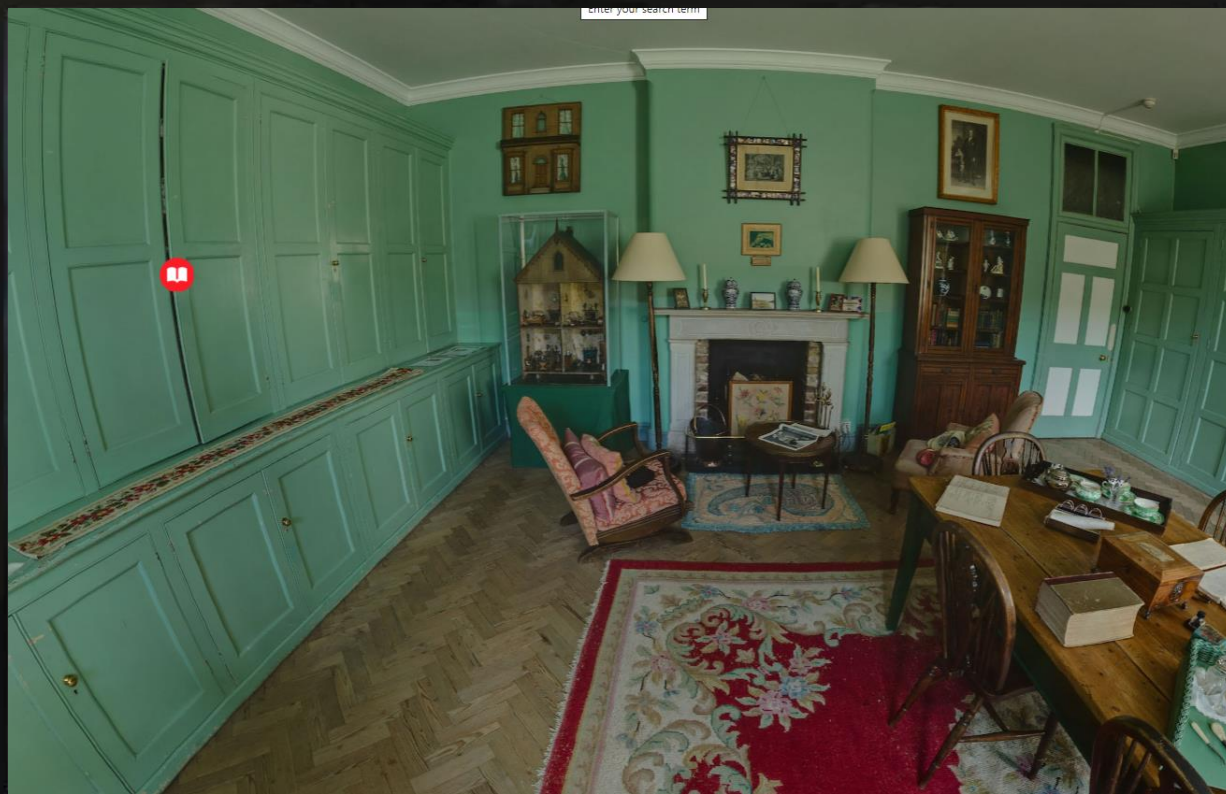
SAMPLE

Test the link and solve some
TEACHER PUZZLES!

[CLICK HERE](#)

360° VIEW

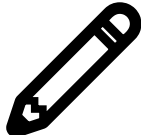
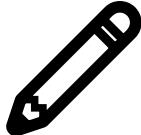

DRAG THE MOUSE OR KEYPAD TO MOVE THE SCREEN FOR A 360° VIEW!

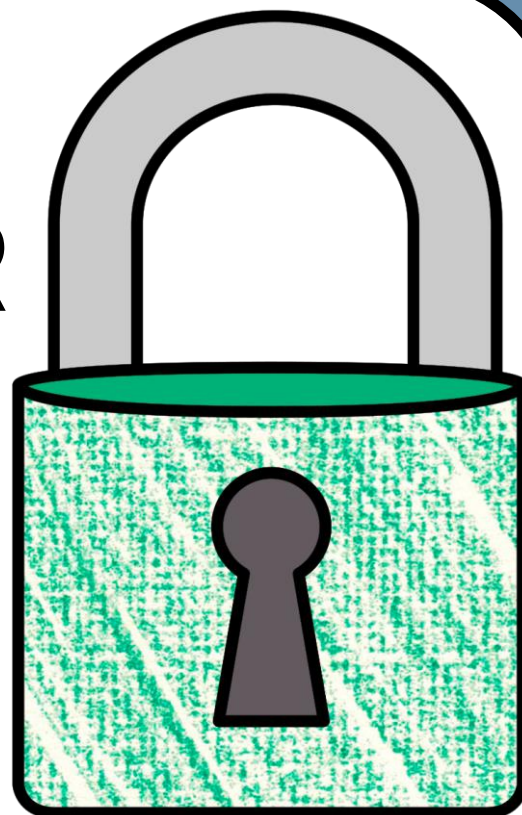


WHAT'S INCLUDED?

- ✓ 6 SHORT READING PASSAGES
- ✓ 12 QUESTIONS TOTAL
- ✓ 6 PUZZLES
- ✓ STUDENT DIRECTIONS (DIGITAL)
- ✓ TEACHER ANSWER KEY
- ✓ PUZZLE HINTS
- ✓ URL LINK TO SHARE ON ANY LMS

WHAT'S NEEDED?

-  **SCRATCH PAPER**
-  **PENCILS**
-  **INTERNET**



BENEFITS OF USE



SELF-GRADING



IMMEDIATE STUDENT FEEDBACK



PAPERLESS



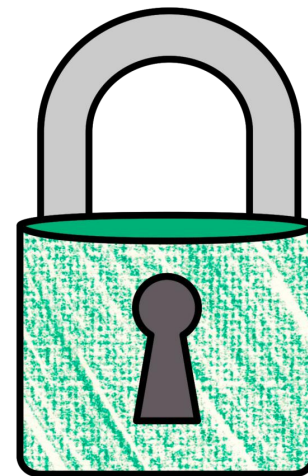
NO PREP



SAVES YOU TIME



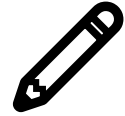
CRITICAL THINKING



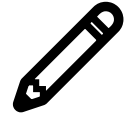
OPTIONS FOR USE



FRONT-LOADING



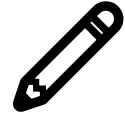
GROUP STATIONS



SUB PLANS



UNIT REVIEW



ENRICHMENT ACTIVITY



TEAMWORK ACTIVITY



REWARD ACTIVITY

