

# GREAT WALL OF CHINA



TM

# DIGITAL ESCAPE

# COLOR CODE

DRAG AND DROP the elements to fill in the reading passage,  
then enter the COLOR CODE.

Qin Shi Huang

500

man-made

Long Wall

Xia dynasty

Ancient China was one of the longest civilizations to exist in Asia, dating back thousands of years. There were 13 dynasties in ancient China beginning with the \_\_\_\_\_ and ending with the Qing. Ancient China had over \_\_\_\_\_ emperors. Construction of the Great Wall of China was completed over a time span of 1,800 years. By the end of construction, it was a total of 13,171 miles long. The Great Wall is a series of walls running in an east-west line. It is the longest \_\_\_\_\_ structure and travels through 15 different regions of China. The wall was built by the first emperor of China, \_\_\_\_\_, as protection to keep northern Mongol and Russian invaders from attacking. The Chinese called the Great Wall "Chang Cheng," which means "\_\_\_\_\_"



# 9 CHALLENGES

After successfully completing each challenge students will earn a number for the final lock code.

**Nice job sleuth!**

**4**

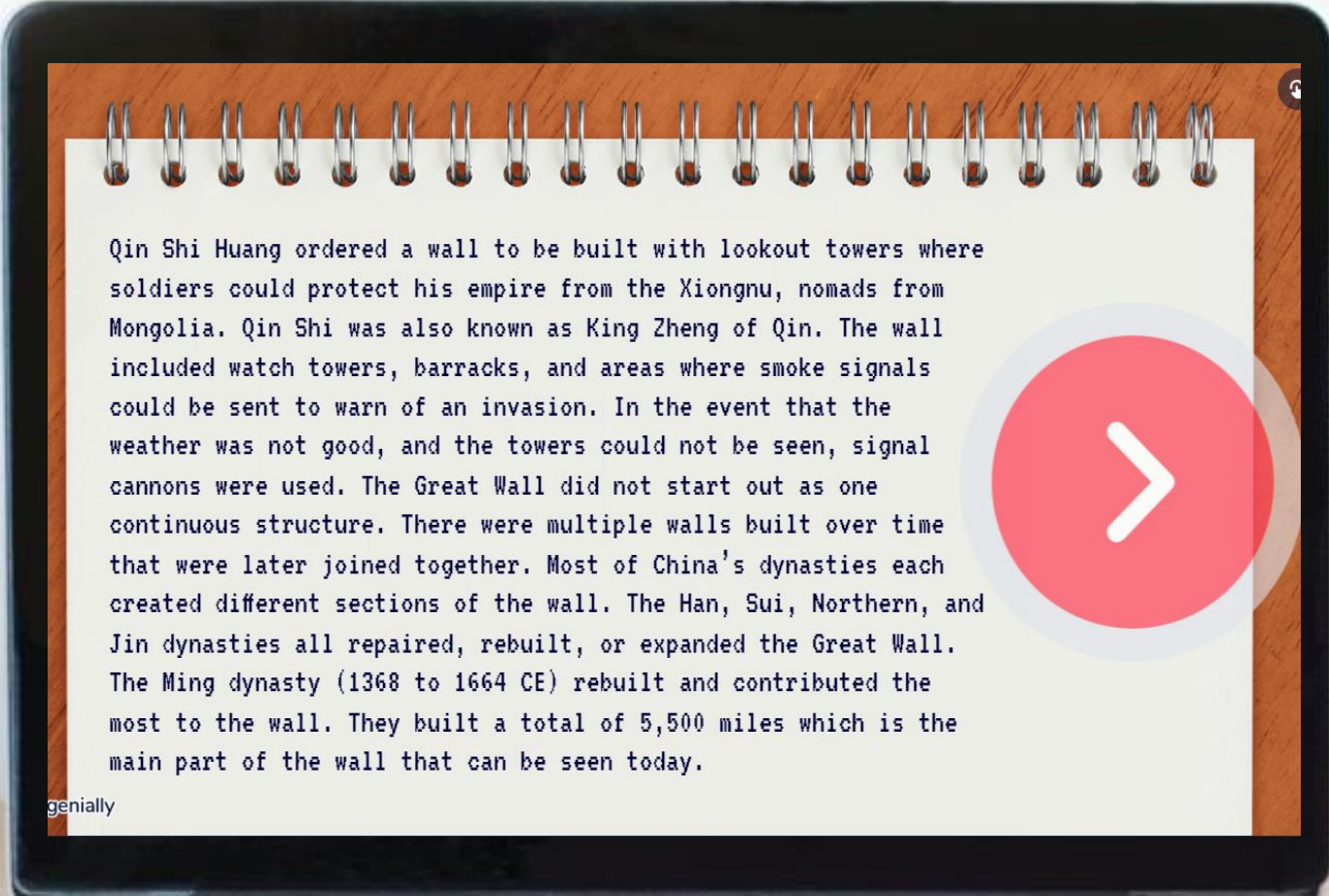
**CONTINUE**





# 6 PASSAGES

STUDENTS WILL READ 6 SHORT PASSAGES ABOUT THE TOPIC,  
THEN ANSWER QUESTIONS.










Qin Shi Huang ordered a wall to be built with lookout towers where soldiers could protect his empire from the Xiongnu, nomads from Mongolia. Qin Shi was also known as King Zheng of Qin. The wall included watch towers, barracks, and areas where smoke signals could be sent to warn of an invasion. In the event that the weather was not good, and the towers could not be seen, signal cannons were used. The Great Wall did not start out as one continuous structure. There were multiple walls built over time that were later joined together. Most of China's dynasties each created different sections of the wall. The Han, Sui, Northern, and Jin dynasties all repaired, rebuilt, or expanded the Great Wall. The Ming dynasty (1368 to 1644 CE) rebuilt and contributed the most to the wall. They built a total of 5,500 miles which is the main part of the wall that can be seen today.

genially



# WHAT'S INCLUDED?

-  **TEACHER GUIDE**
-  **9 PUZZLE CHALLENGES**
-  **6 READING PASSAGES**
-  **2 POP UP MYSTERY PUZZLES**
-  **FREQUENTLY ASKED QUESTIONS**
-  **PUZZLE HELP AND ANSWER KEY**
-  **DIGITAL POP-UP HINTS**

**THINK  
TANK**

# CLICK AND BYE

Students will eliminate false answers to reveal  
a four-digit code to move on.

The purpose of the wall during the Han dynasty was to keep out the Huns.

The Warring States Period lasted from 475 BC-221 BC.

The Han dynasty was under the rule of Emperor Kublai Khan.

**CLICK ON  
THE FALSE  
STATEMENTS TO  
ELIMINATE THEM AND  
REVEAL A CODE.**

Only two of China's dynasties created different sections of the wall.

The Great Wall started out as one continuous structure.

The Silk Road connected China to the west.

The earliest known structure was the Chu State Great Wall.

Natural barriers helped to protect ancient China from invasions.

Han Guangwudi ordered the wall to be built with lookout towers.

**CONTINUE**



# REVEAL

Students will drag the flashlight to reveal hidden images.





# SAMPLE

Test the link and solve some  
TEACHER PUZZLES!

[CLICK HERE](#)








# PUZZLE TYPES

QWERTY  
TEXT MESSAGE  
CLICK & BYE  
JIGSAW

COLOR CODE  
DRAG & DROP  
CIPHER  
DIRECTIONAL

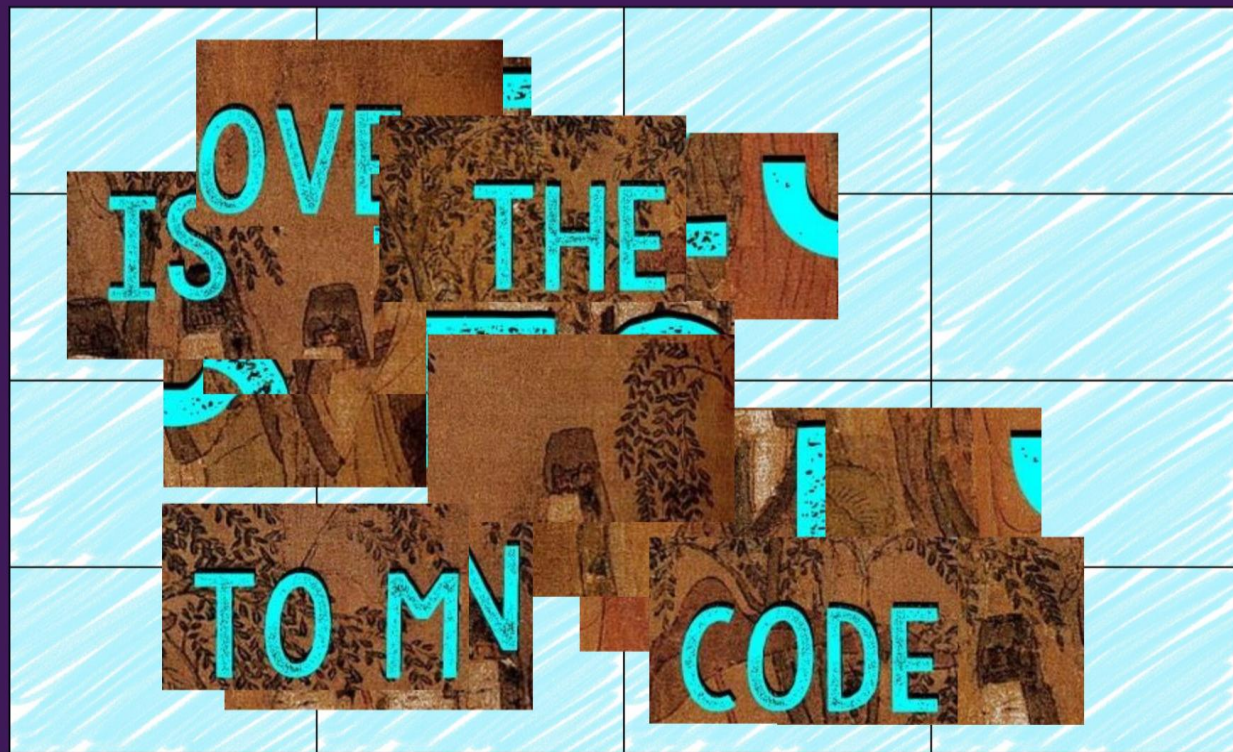


# QUESTIONS

-  5 FILL IN THE BLANK
-  8 DRAG AND DROP
-  9 TRUE OR FALSE
-  6 UNSCRAMBLE WORDS
-  7 MULTIPLE CHOICE

# JIGSAW

COMPLETE THE JIGSAW PUZZLE TO REVEAL A  
FOUR-DIGIT CODE TO MOVE ON.



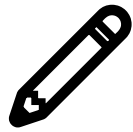
# BENEFITS



**SELF-GRADING**



**IMMEDIATE STUDENT FEEDBACK**



**PAPERLESS**



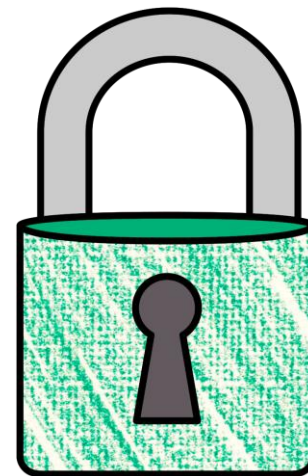
**NO PREP**



**SAVES YOU TIME**



**CRITICAL THINKING**



**THINK  
TANK**

# POP-UPS

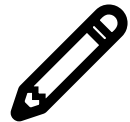
ALONG THE WAY, STUDENTS WILL ENCOUNTER INTERACTIVE  
MYSTERY POP-UP PUZZLES.



# OPTIONS



**FRONT-LOADING**



**GROUP STATIONS**



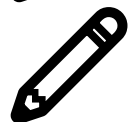
**SUB PLANS**



**UNIT REVIEW**



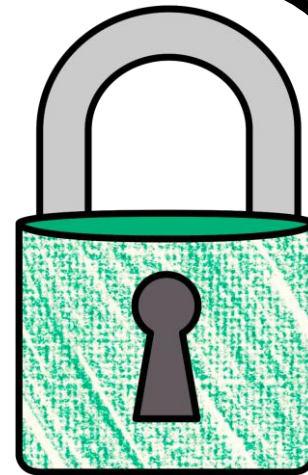
**ENRICHMENT ACTIVITY**



**TEAMWORK ACTIVITY**



**REWARD ACTIVITY**



**THINK  
TANK**

# COLLECT KEYS

After completing each puzzle, students  
will earn a "key"





# FINAL CODE

STUDENTS ENTER THE FINAL CODE 9-DIGIT CODE  
TO CRACK THE CASE.

ENTER THE  
9 DIGIT CODE TO  
THE THIEF'S VAULT

RETURN

