

BENJAMIN FRANKLIN

DIGITAL ESCAPE™

PUZZLE 5 DECODE THE MISSING WORDS TO THE STATEMENT FOUND BELOW. YOU'LL NEED THIS ANSWER TO MOVE ON.

A	B	C	J	K	L
D	E	F	M	N	O
G	H	I	P	Q	R

S	U
T	V

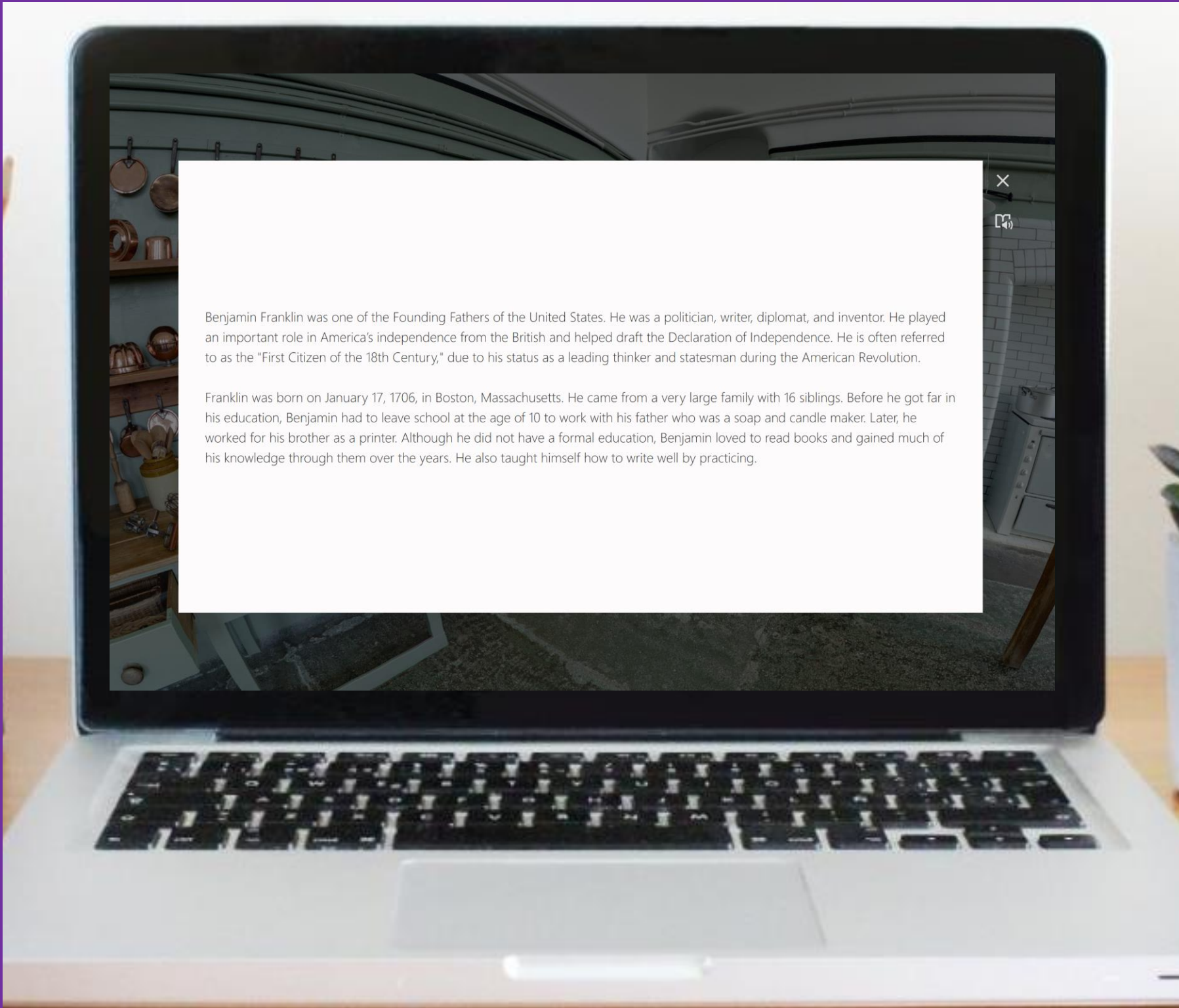
W	Y
X	Z

To measure the
distances between
postal stations,
Franklin...

Γ □ Λ □ □ > □ □
> □ □ □ Γ □ V >
□ □ □ □ > □ □



6 PASSAGES

A laptop is shown from a slightly elevated angle, displaying a webpage. The webpage has a dark background image of a kitchen with various items on shelves. A large white rectangular box is overlaid on the screen, containing text. The text is centered and reads: "Benjamin Franklin was one of the Founding Fathers of the United States. He was a politician, writer, diplomat, and inventor. He played an important role in America's independence from the British and helped draft the Declaration of Independence. He is often referred to as the 'First Citizen of the 18th Century,' due to his status as a leading thinker and statesman during the American Revolution." Below this, another paragraph reads: "Franklin was born on January 17, 1706, in Boston, Massachusetts. He came from a very large family with 16 siblings. Before he got far in his education, Benjamin had to leave school at the age of 10 to work with his father who was a soap and candle maker. Later, he worked for his brother as a printer. Although he did not have a formal education, Benjamin loved to read books and gained much of his knowledge through them over the years. He also taught himself how to write well by practicing." The laptop keyboard is visible at the bottom of the frame.

Benjamin Franklin was one of the Founding Fathers of the United States. He was a politician, writer, diplomat, and inventor. He played an important role in America's independence from the British and helped draft the Declaration of Independence. He is often referred to as the "First Citizen of the 18th Century," due to his status as a leading thinker and statesman during the American Revolution.

Franklin was born on January 17, 1706, in Boston, Massachusetts. He came from a very large family with 16 siblings. Before he got far in his education, Benjamin had to leave school at the age of 10 to work with his father who was a soap and candle maker. Later, he worked for his brother as a printer. Although he did not have a formal education, Benjamin loved to read books and gained much of his knowledge through them over the years. He also taught himself how to write well by practicing.

12 QUESTIONS

MULTIPLE CHOICE AND SHORT ANSWER

Benjamin Franklin was a ____.

- Diplomat
- Inventor
- Politician
- All of the above

In what state was Benjamin Franklin born?

Type answer here

6 PUZZLES

Should students get "stuck" on a puzzle, hint cards can be found throughout the escape room.

PUZZLE 6 DECODE THE MISSING BELOW. YOU'LL FIND THE KEY TO THE NEXT ROOM.

	1	2	3	4	5
1	D	B	E		C
2	K		H	I/J	F
3		P	N	O	M
4	T	R		Q	S
5		Z	X	V	W

Example: The letter "C" would be 5-1.

PUZZLE 1 DECODE THE MISSING BELOW. YOU'LL FIND THE KEY TO THE NEXT ROOM.

Birds cannot locate these items.

	= A		= E		= I		= M
	= B		= F		= J		= N
	= C		= G		= K		= O
	= D		= H		= L		= P

PUZZLE 3 DECODE THE MISSING BELOW. YOU'LL FIND THE KEY TO THE NEXT ROOM.

In the Outer Court

2-1, 1-4, 1-3 3-6, 1-9 1-5,

PUZZLE 5 DECODE THE MISSING BELOW. YOU'LL FIND THE KEY TO THE NEXT ROOM.

A	B	C	J	K	L
D	E	F	M	N	O
G	H	I	P	Q	R

~~S~~ ~~T~~ ~~U~~ ~~V~~ ~~W~~ ~~X~~ ~~Y~~ ~~Z~~

PUZZLE 4 DECODE THE MISSING WORD BELOW. YOU'LL NEED THE KEY TO THE NEXT ROOM.

The In
is b
KZ
v
GIZM

PUZZLE 2 DECODE THE MISSING WORD BELOW. YOU'LL FIND THE KEY TO THE NEXT ROOM.

1	2	3
4	5	6
7	8	9

Back in the day, you would have to press the number multiple times to find a letter to send a text message.

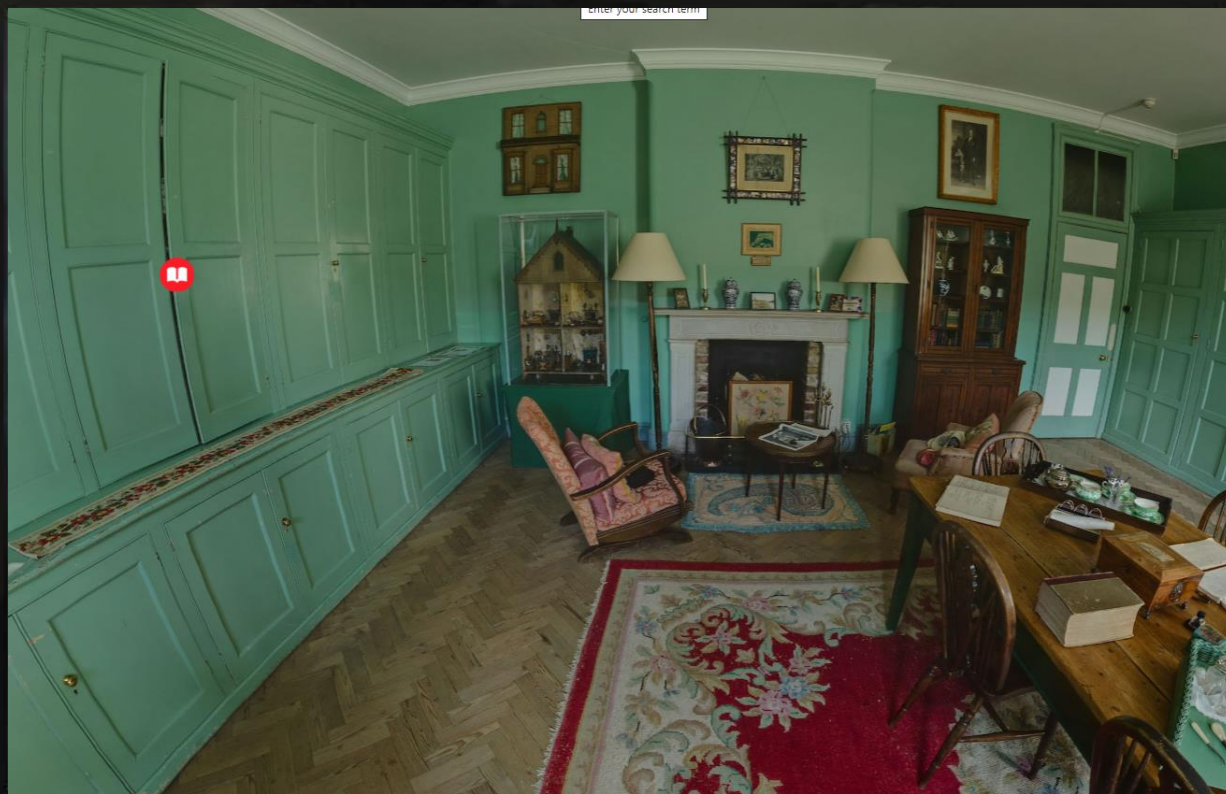
SAMPLE

Test the link and solve some
TEACHER PUZZLES!

[CLICK HERE](#)

360° VIEW

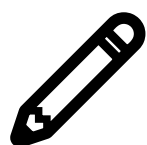
DRAG THE MOUSE OR KEYPAD TO MOVE THE SCREEN FOR A 360° VIEW!



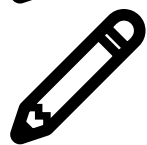
WHAT'S INCLUDED?

- ✓ 6 SHORT READING PASSAGES
- ✓ 12 QUESTIONS TOTAL
- ✓ 6 PUZZLES
- ✓ STUDENT DIRECTIONS (DIGITAL)
- ✓ TEACHER ANSWER KEY
- ✓ PUZZLE HINTS
- ✓ URL LINK TO SHARE ON ANY LMS

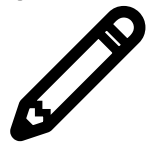
WHAT'S NEEDED?



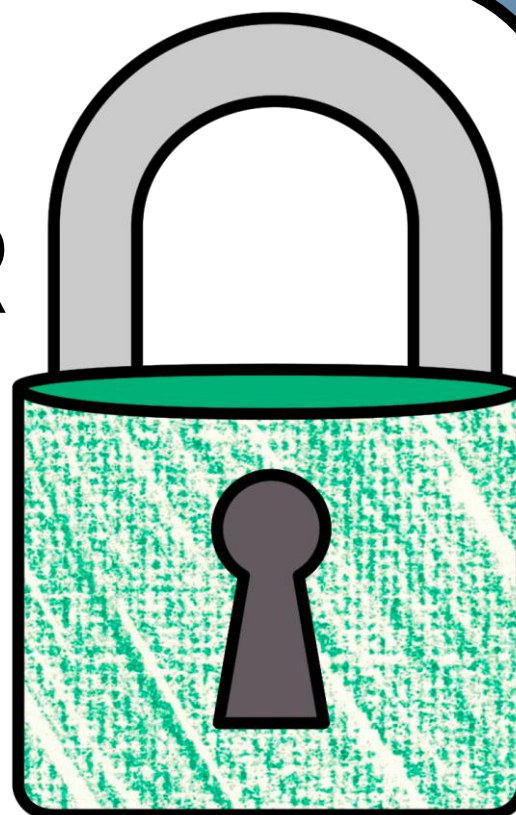
SCRATCH PAPER



PENCILS



INTERNET



BENEFITS OF USE



SELF-GRADING



IMMEDIATE STUDENT FEEDBACK



PAPERLESS



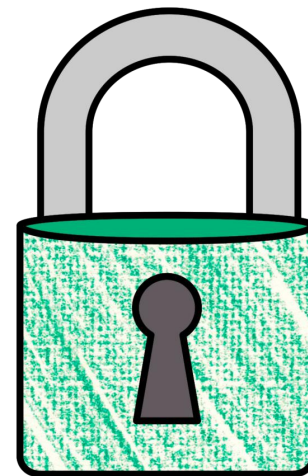
NO PREP



SAVES YOU TIME



CRITICAL THINKING



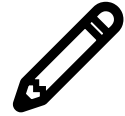
OPTIONS FOR USE



FRONT-LOADING



GROUP STATIONS



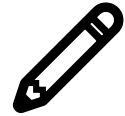
SUB PLANS



UNIT REVIEW



ENRICHMENT ACTIVITY



TEAMWORK ACTIVITY



REWARD ACTIVITY

