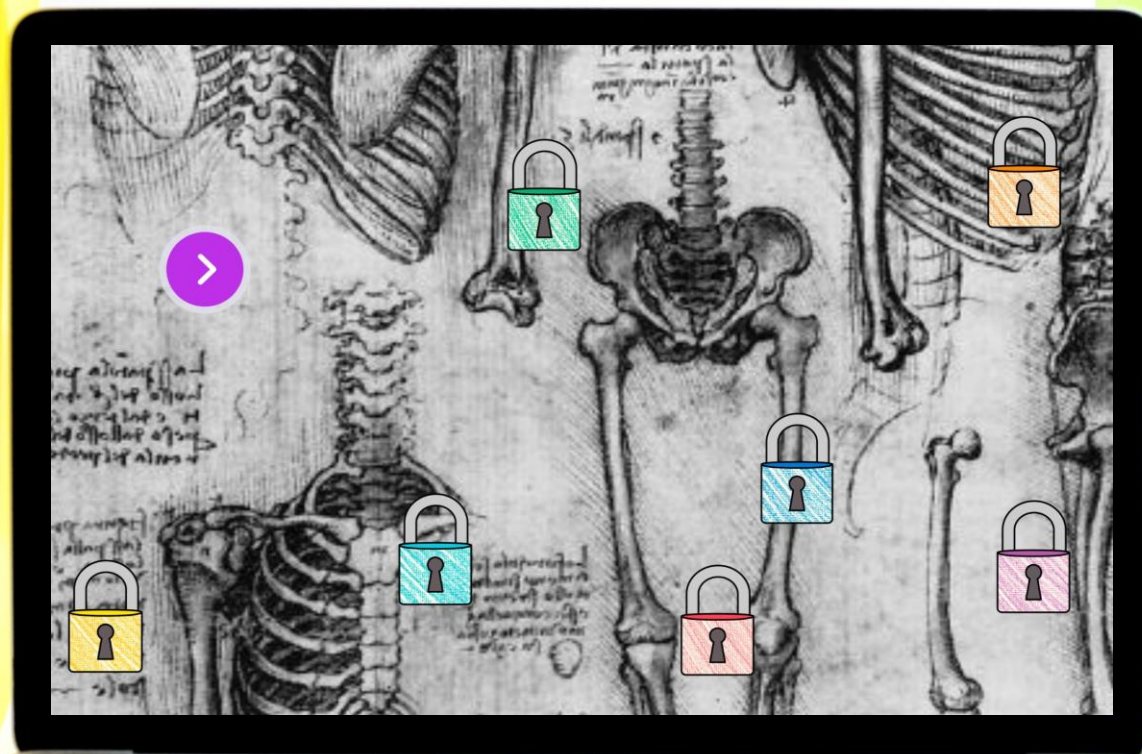


SKELETAL SYSTEM



TM

DIGITAL ESCAPE

COLOR CODE

DRAG AND DROP the elements to fill in the reading passage,
then enter the COLOR CODE.

calcium

heart

six

cartilage

orthopedics

The skeletal system provides the framework of the human body. This system has _____ main functions including: mineral storage, endocrine regulation, production of blood cells, protection, support, and movement. The skeletal system consists of bones, connective tissue (_____), tendons, and ligaments. The study of the human skeletal system is called _____. Tendons connect bones to muscles. Ligaments connect bones to other bones. Each bone in the body serves a purpose. Some bones protect. For instance, the rib cage protects the _____ and lungs. Likewise, the skull protects the brain. Other bones help move the muscles of the body. Bones give our body structure, shape, and strength. Finally, bones help produce blood cells in the bone marrow. Up to 70 percent of bones are made of minerals, including _____.



9 CHALLENGES

After successfully completing each challenge students will earn a number for the final lock code.

Nice job sleuth!

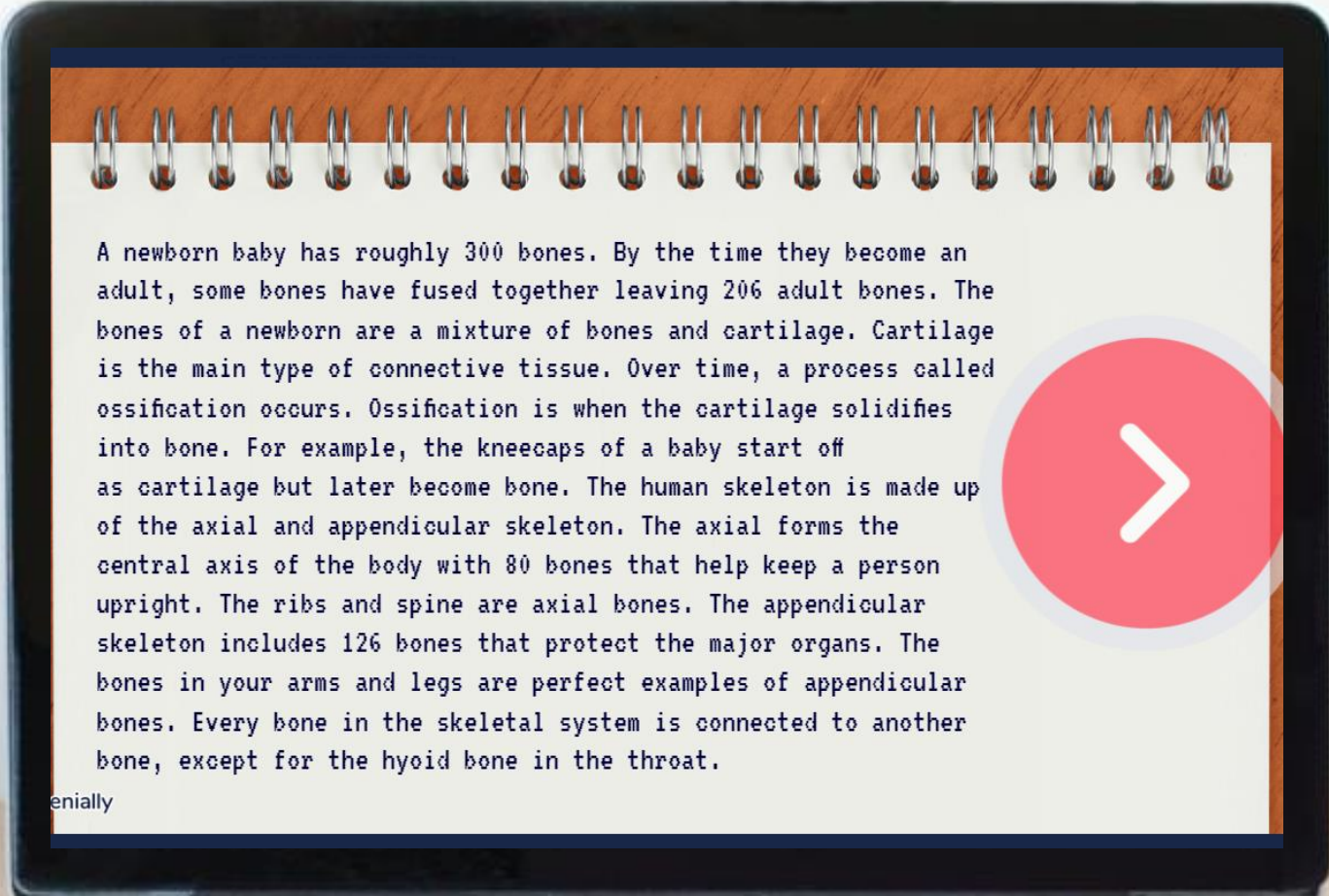
4

CONTINUE

**THINK
TANK**

6 PASSAGES

STUDENTS WILL READ 6 SHORT PASSAGES ABOUT THE TOPIC,
THEN ANSWER QUESTIONS.










A newborn baby has roughly 300 bones. By the time they become an adult, some bones have fused together leaving 206 adult bones. The bones of a newborn are a mixture of bones and cartilage. Cartilage is the main type of connective tissue. Over time, a process called ossification occurs. Ossification is when the cartilage solidifies into bone. For example, the kneecaps of a baby start off as cartilage but later become bone. The human skeleton is made up of the axial and appendicular skeleton. The axial forms the central axis of the body with 80 bones that help keep a person upright. The ribs and spine are axial bones. The appendicular skeleton includes 126 bones that protect the major organs. The bones in your arms and legs are perfect examples of appendicular bones. Every bone in the skeletal system is connected to another bone, except for the hyoid bone in the throat.

entially



WHAT'S INCLUDED?

-  **TEACHER GUIDE**
-  **9 PUZZLE CHALLENGES**
-  **6 READING PASSAGES**
-  **2 POP UP MYSTERY PUZZLES**
-  **FREQUENTLY ASKED QUESTIONS**
-  **PUZZLE HELP AND ANSWER KEY**
-  **DIGITAL POP-UP HINTS**

**THINK
TANK**

CLICK AND BYE

Students will eliminate false answers to reveal a four-digit code to move on.

Cortical bones are also called compact bones.

The bone marrow can be found in the center of bones.

Only about 24% of the skeleton is compact bone.

CLICK ON THE FALSE STATEMENTS TO ELIMINATE THEM AND REVEAL A CODE.

Trabecular bones are hard and smooth.

The cornea is the outer surface of the bone.

The bone marrow has a very thick, jelly-like consistency.

Blood cells are needed by the entire body to transport oxygen and nutrients.

Bones in the human skeletal system include cortical bones and trabecular bones.

There are three types of bone marrow: red, purple, and blue.

CONTINUE



REVEAL

Students will drag the flashlight to reveal hidden images.



SAMPLE

Test the link and solve some
TEACHER PUZZLES!

[CLICK HERE](#)








PUZZLE TYPES

QWERTY
TEXT MESSAGE
CLICK & BYE
JIGSAW

COLOR CODE
DRAG & DROP
CIPHER
DIRECTIONAL



QUESTIONS

-  5 FILL IN THE BLANK
-  8 DRAG AND DROP
-  9 TRUE OR FALSE
-  6 UNSCRAMBLE WORDS
-  7 MULTIPLE CHOICE

JIGSAW

COMPLETE THE JIGSAW PUZZLE TO REVEAL A
FOUR-DIGIT CODE TO MOVE ON.



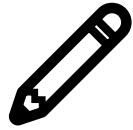
BENEFITS



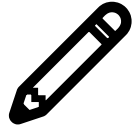
SELF-GRADING



IMMEDIATE STUDENT FEEDBACK



PAPERLESS



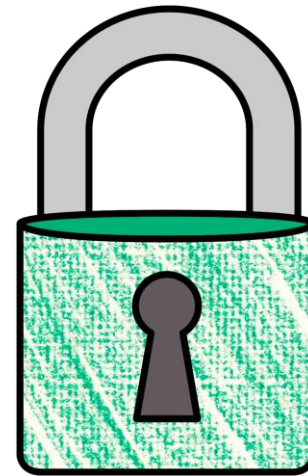
NO PREP



SAVES YOU TIME



CRITICAL THINKING



**THINK
TANK**

POP-UPS

ALONG THE WAY, STUDENTS WILL ENCOUNTER INTERACTIVE
MYSTERY POP-UP PUZZLES.



OPTIONS



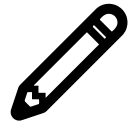
FRONT-LOADING



GROUP STATIONS



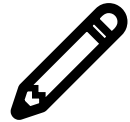
SUB PLANS



UNIT REVIEW



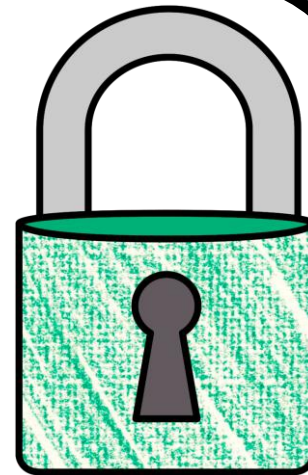
ENRICHMENT ACTIVITY



TEAMWORK ACTIVITY



REWARD ACTIVITY



**THINK
TANK**

COLLECT KEYS

After completing each puzzle, students will earn a "key"



FINAL CODE

STUDENTS ENTER THE FINAL CODE 9-DIGIT CODE
TO CRACK THE CASE.

ENTER THE
9 DIGIT CODE TO
THE THIEF'S VAULT

RETURN

