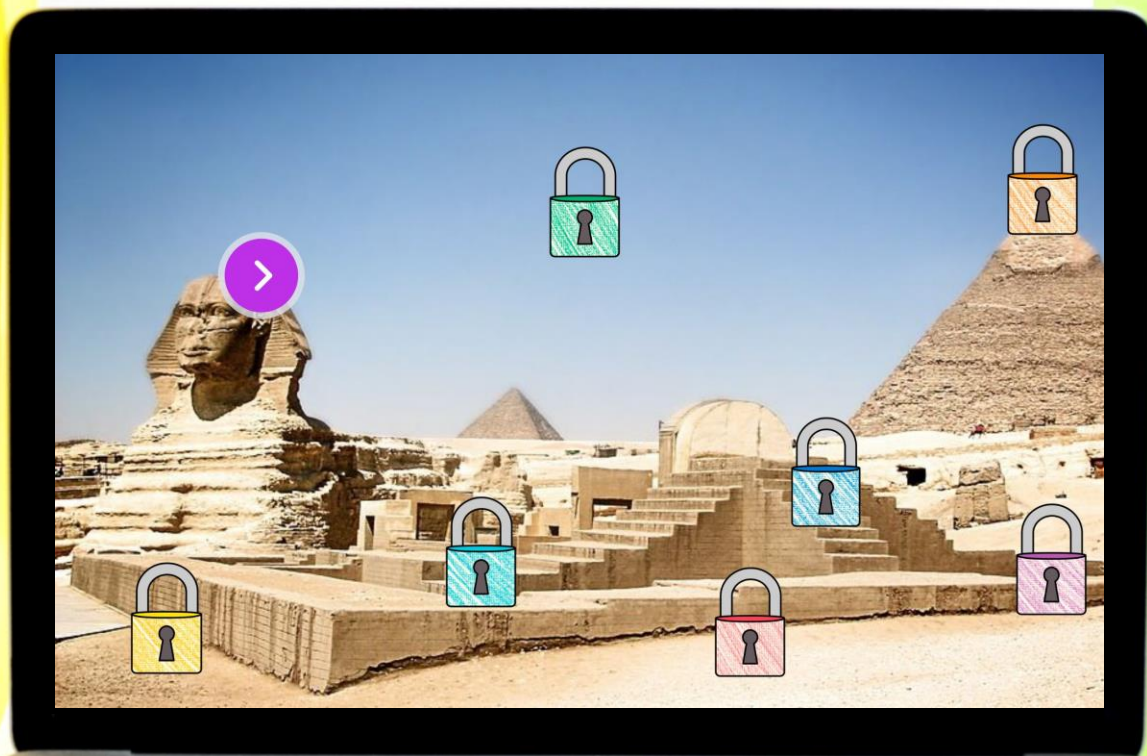


# GREAT SPHINX



THINK  
TANK

TM

# DIGITAL ESCAPE

# COLOR CODE

DRAG AND DROP the elements to fill in the reading passage,  
then enter the COLOR CODE.

north      pharaohs      Lower  
necropolis      Nile River

Ancient Egypt was a civilization that lasted over 3,000 years, located along the \_\_\_\_\_ in northeast Africa. This civilization was one of the longest and most powerful ones in history. They are well known for their pyramids, which were built as a burial and memorial for \_\_\_\_\_. The Ancient Egyptians had many beliefs. In their religion, the two most important figures were gods and pharaohs. Ancient Egypt was divided into two regions known as Upper Egypt and \_\_\_\_\_ Egypt. This was based on the flow of the Nile River. Oddly, Upper Egypt was in the south and Lower Egypt was in the \_\_\_\_\_. Palaces, houses, and temples were built on the eastern bank of the Nile. The \_\_\_\_\_, or "city of the dead," was on the western bank of the Nile.

Color Key:  
Red  
Green  
Blue  
Yellow  
Purple



# 9 CHALLENGES

After successfully completing each challenge students will earn a number for the final lock code.

**Nice job sleuth!**

**4**

**CONTINUE**



# PIGPEN CIPHER

REVEAL A DECODER HIDDEN BENEATH THE IMAGE ON THE LEFT,  
THEN DECODE THE WORDS.

SCRATCH ME

1.

2.

3.

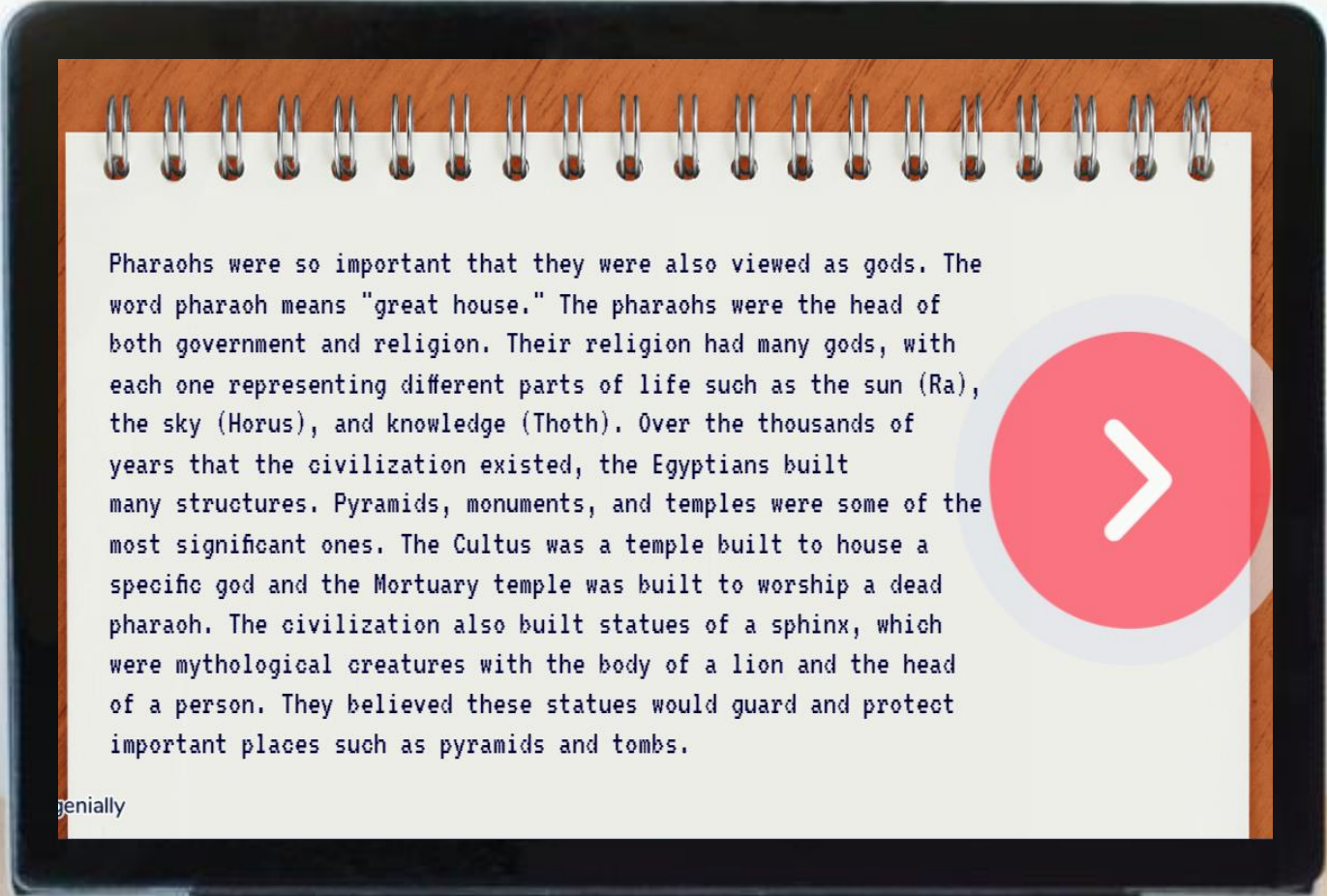
4.

✓ CHECK



# 6 PASSAGES

Students will read 6 short passages about the topic, then answer questions.










Pharaohs were so important that they were also viewed as gods. The word pharaoh means "great house." The pharaohs were the head of both government and religion. Their religion had many gods, with each one representing different parts of life such as the sun (Ra), the sky (Horus), and knowledge (Thoth). Over the thousands of years that the civilization existed, the Egyptians built many structures. Pyramids, monuments, and temples were some of the most significant ones. The Cultus was a temple built to house a specific god and the Mortuary temple was built to worship a dead pharaoh. The civilization also built statues of a sphinx, which were mythological creatures with the body of a lion and the head of a person. They believed these statues would guard and protect important places such as pyramids and tombs.

genially



# WHAT'S INCLUDED?

-  **TEACHER GUIDE**
-  **9 PUZZLE CHALLENGES**
-  **6 READING PASSAGES**
-  **2 POP UP MYSTERY PUZZLES**
-  **FREQUENTLY ASKED QUESTIONS**
-  **PUZZLE HELP AND ANSWER KEY**
-  **DIGITAL POP-UP HINTS**

**THINK  
TANK**

# CLICK AND BYE

Students will eliminate false answers to reveal a four-digit code to move on.

The Great Sphinx was built out of a very large piece of limestone.

The Great Sphinx is 241 feet long.

The Great Pyramid was built for Pharaoh Tut.

CLICK ON THE FALSE STATEMENTS TO ELIMINATE THEM AND REVEAL A CODE.

Historians think the Great Sphinx was constructed under Ramses VII during the 5th Dynasty.

Historians know who built the Great Sphinx.

Historians estimate that it took around 100 workers over the span of three years to complete the Great Sphinx.

Khafre was the son of King Khufu.

The largest pyramid was the Great Pyramid of Giza.

It took just four years to build the Great Pyramid of Giza.

**CONTINUE**



# REVEAL

Students will drag the flashlight to reveal hidden images.





# SAMPLE

Test the link and solve some  
TEACHER PUZZLES!

[CLICK HERE](#)








# PUZZLE TYPES

QWERTY  
TEXT MESSAGE  
CLICK & BYE  
JIGSAW

COLOR CODE  
DRAG & DROP  
CIPHER  
DIRECTIONAL

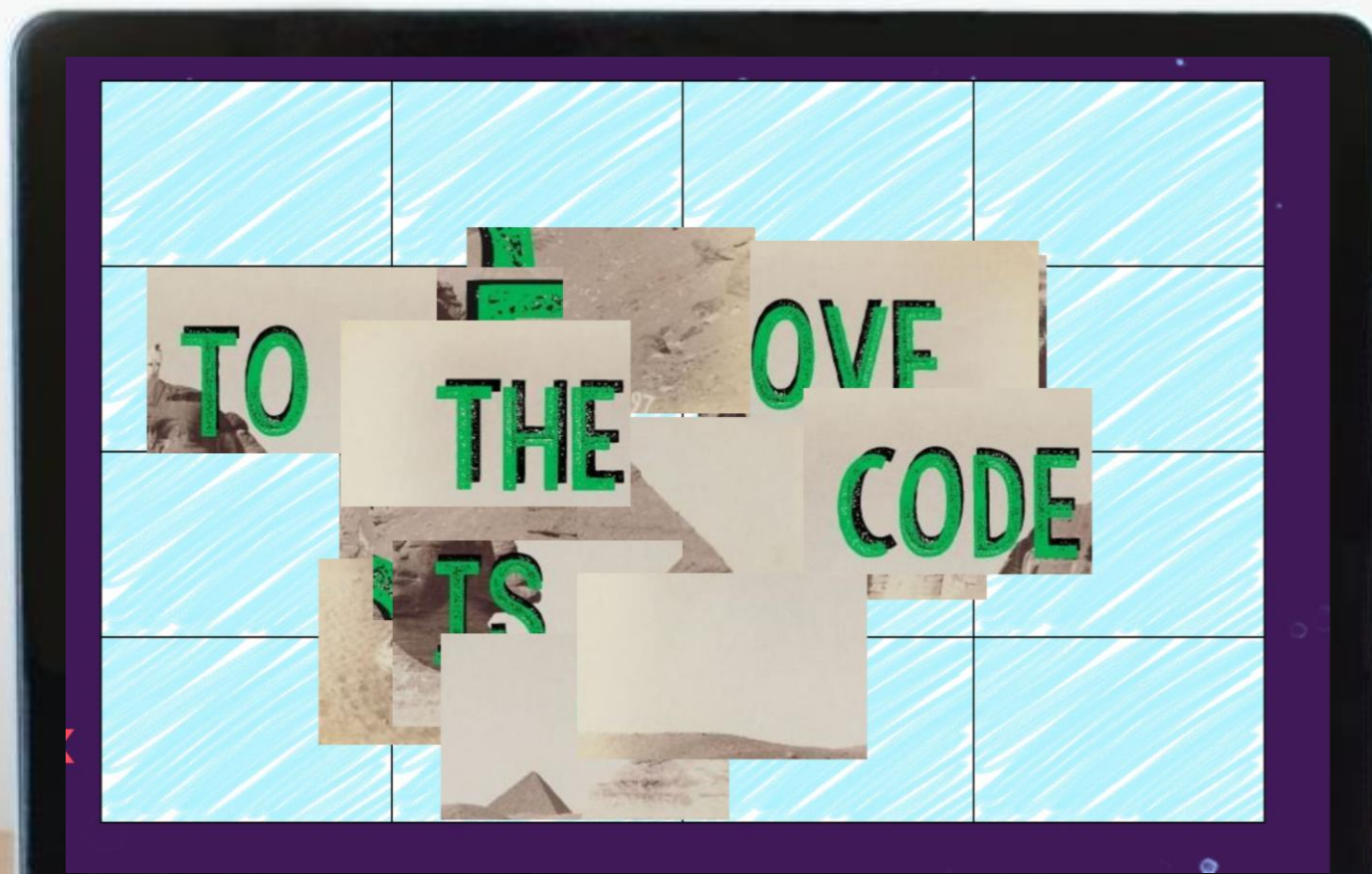


# QUESTIONS

-  5 FILL IN THE BLANK
-  8 DRAG AND DROP
-  9 TRUE OR FALSE
-  6 UNSCRAMBLE WORDS
-  7 MULTIPLE CHOICE

# JIGSAW

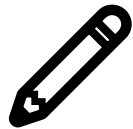
COMPLETE THE JIGSAW PUZZLE TO REVEAL A  
FOUR-DIGIT CODE TO MOVE ON.



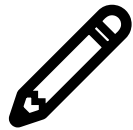
# BENEFITS



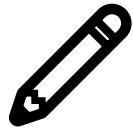
**SELF-GRADING**



**IMMEDIATE STUDENT FEEDBACK**



**PAPERLESS**



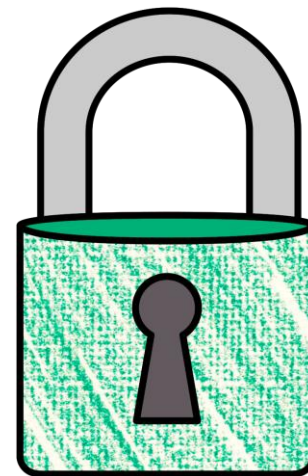
**NO PREP**



**SAVES YOU TIME**



**CRITICAL THINKING**



**THINK  
TANK**

# POP-UPS

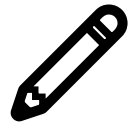
ALONG THE WAY, STUDENTS WILL ENCOUNTER INTERACTIVE  
MYSTERY POP-UP PUZZLES.



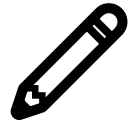
# OPTIONS



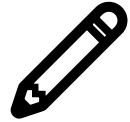
**FRONT-LOADING**



**GROUP STATIONS**



**SUB PLANS**



**UNIT REVIEW**



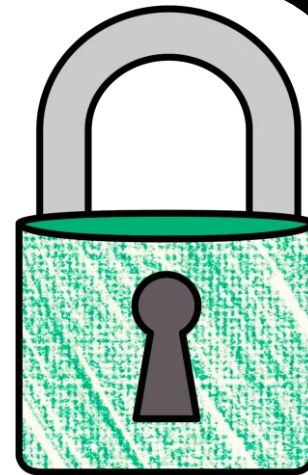
**ENRICHMENT ACTIVITY**



**TEAMWORK ACTIVITY**



**REWARD ACTIVITY**



**THINK  
TANK**

# COLLECT KEYS

After completing each puzzle, students will earn a "key"





# FINAL CODE

STUDENTS ENTER THE FINAL CODE 9-DIGIT CODE  
TO CRACK THE CASE.

ENTER THE  
9 DIGIT CODE TO  
THE THIEF'S VAULT

RETURN

