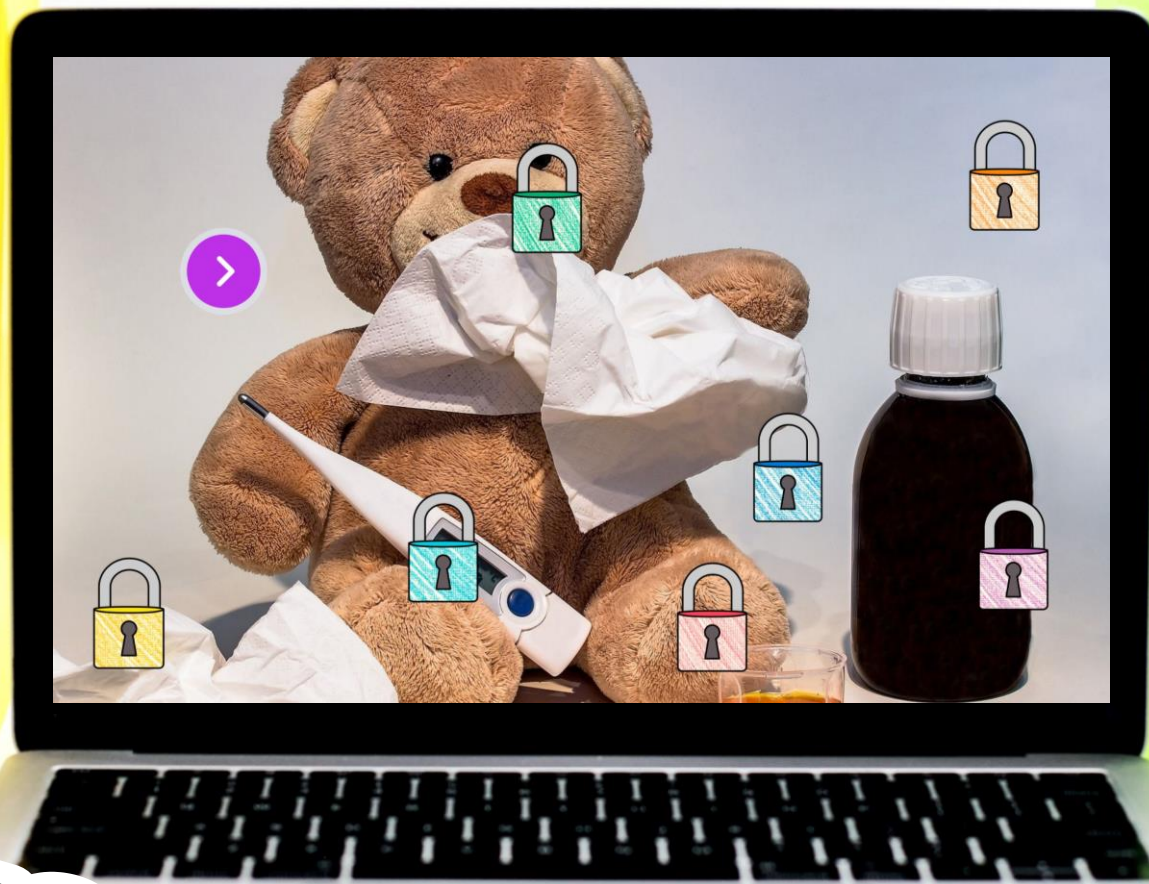


# IMMUNE SYSTEM



**DIGITAL ESCAPE**

TM

# COLOR CODE

DRAG AND DROP the elements to fill in the reading passage,  
then enter the COLOR CODE.

intestine pathogens lymph  
throat free

The immune system (from the Latin word "immunis" meaning "untouched" or "\_\_\_\_\_") is the body's defense system that is responsible for keeping the body healthy and strong. It protects the body from anything harmful such as viruses, bacteria, and invading germs that can make a person sick. These harmful invaders are called \_\_\_\_\_ or antigens. The immune system includes the skin, white blood cells, and the \_\_\_\_\_ system. The immune system army that combats germs includes these body parts: adenoid, appendix (lower right abdomen), bone marrow, lymph nodes, Peyer's patches (in the small \_\_\_\_\_), spleen (under the ribs), thymus gland (in the chest), and tonsils (in the \_\_\_\_\_).



# 9 CHALLENGES

After successfully completing each challenge students will earn a number for the final lock code.

Nice job sleuth!

4

CONTINUE



# PIGPEN CIPHER

Reveal a decoder hidden beneath the image on the left,  
then decode the words.

SCRATCH ME

1.

2.

3.

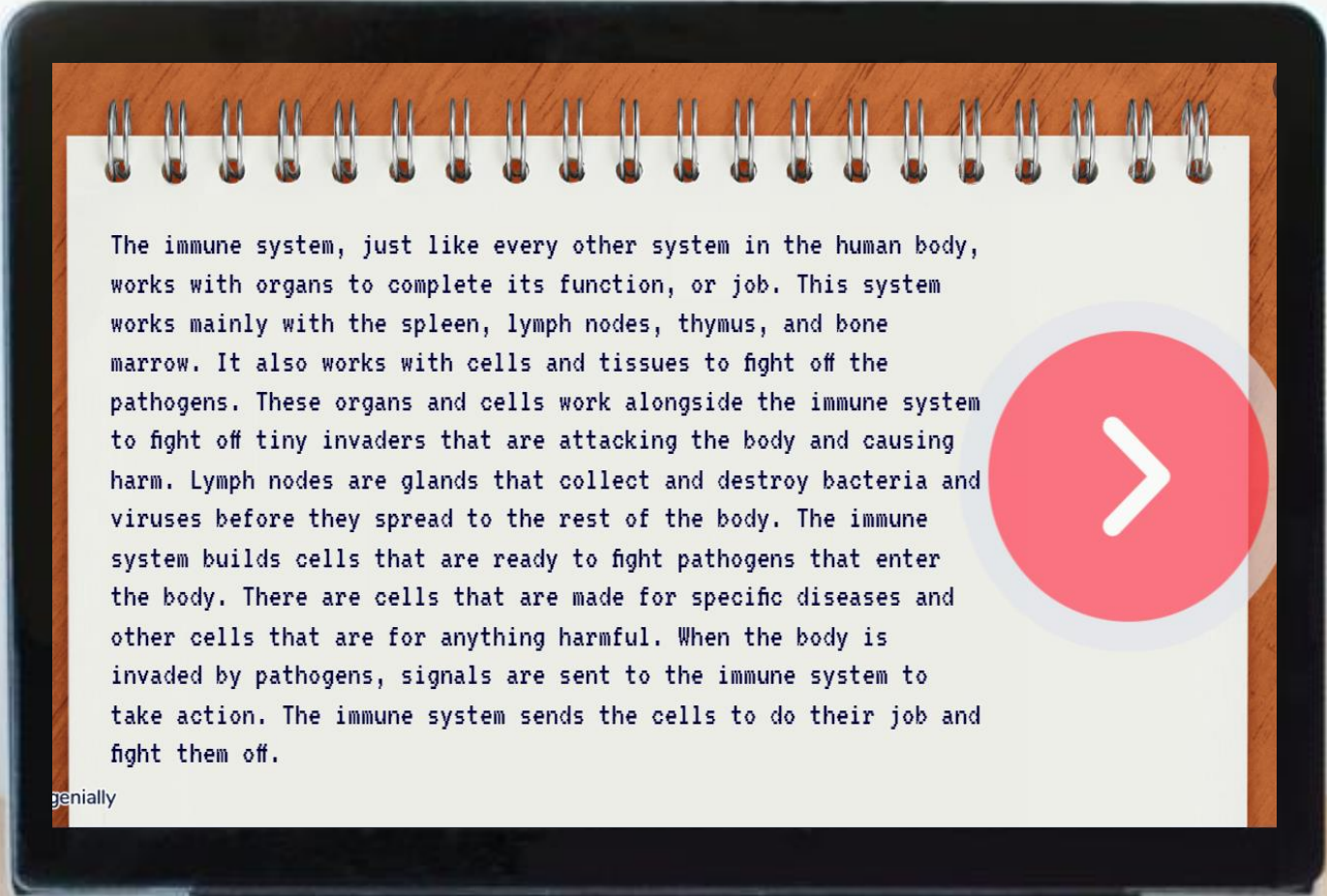
4.

✓ CHECK



# 6 PASSAGES

Students will read 6 short passages about the topic,  
then answer questions.










The immune system, just like every other system in the human body, works with organs to complete its function, or job. This system works mainly with the spleen, lymph nodes, thymus, and bone marrow. It also works with cells and tissues to fight off the pathogens. These organs and cells work alongside the immune system to fight off tiny invaders that are attacking the body and causing harm. Lymph nodes are glands that collect and destroy bacteria and viruses before they spread to the rest of the body. The immune system builds cells that are ready to fight pathogens that enter the body. There are cells that are made for specific diseases and other cells that are for anything harmful. When the body is invaded by pathogens, signals are sent to the immune system to take action. The immune system sends the cells to do their job and fight them off.

genially



# WHAT'S INCLUDED?

-  **TEACHER GUIDE**
-  **9 PUZZLE CHALLENGES**
-  **6 READING PASSAGES**
-  **2 POP UP MYSTERY PUZZLES**
-  **FREQUENTLY ASKED QUESTIONS**
-  **PUZZLE HELP AND ANSWER KEY**
-  **DIGITAL POP-UP HINTS**

**THINK  
TANK**

# CLICK AND BYE

Students will eliminate false answers to reveal a four-digit code to move on.

B cells release antibodies which attack antigens.

Immunoglobulins are a Y-shaped protein the body creates to fight the pathogens.

White blood cells are also known as alveoli.

**CLICK ON  
THE FALSE  
STATEMENTS TO  
ELIMINATE THEM AND  
REVEAL A CODE.**

Antibodies are also known as leukocytes.

White blood cells are made in the liver.

T cells also release chemicals called cytokines.

There are two specific T cells: helper cells and killer T cells.

Antigens are the tiny invaders that can cause disease.

There are six types of white blood cells.

**CONTINUE**



# REVEAL

STUDENTS WILL DRAG THE FLASHLIGHT TO REVEAL  
HIDDEN IMAGES.





# SAMPLE

Test the link and solve some  
TEACHER PUZZLES!

[CLICK HERE](#)








# PUZZLE TYPES

QWERTY  
TEXT MESSAGE  
CLICK & BYE  
JIGSAW

COLOR CODE  
DRAG & DROP  
CIPHER  
DIRECTIONAL



# QUESTIONS

-  5 FILL IN THE BLANK
-  8 DRAG AND DROP
-  9 TRUE OR FALSE
-  6 UNSCRAMBLE WORDS
-  7 MULTIPLE CHOICE

# JIGSAW

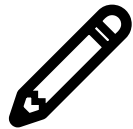
COMPLETE THE JIGSAW PUZZLE TO REVEAL A  
FOUR-DIGIT CODE TO MOVE ON.



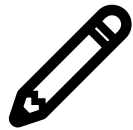
# BENEFITS



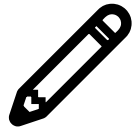
**SELF-GRADING**



**IMMEDIATE STUDENT FEEDBACK**



**PAPERLESS**



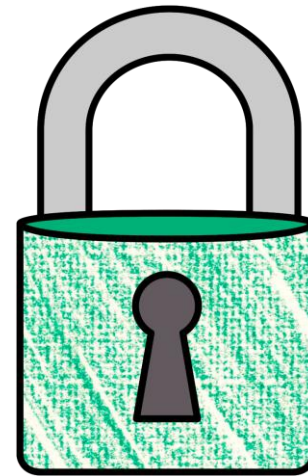
**NO PREP**



**SAVES YOU TIME**



**CRITICAL THINKING**



**THINK  
TANK**

# POP-UPS

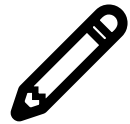
ALONG THE WAY, STUDENTS WILL ENCOUNTER INTERACTIVE  
MYSTERY POP-UP PUZZLES.



# OPTIONS



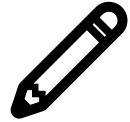
**FRONT-LOADING**



**GROUP STATIONS**



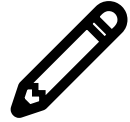
**SUB PLANS**



**UNIT REVIEW**



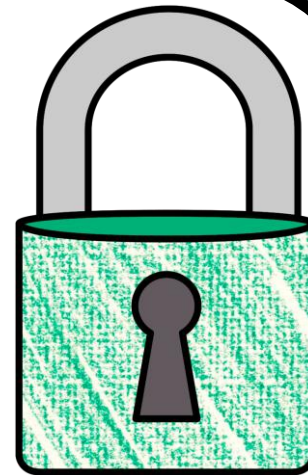
**ENRICHMENT ACTIVITY**



**TEAMWORK ACTIVITY**



**REWARD ACTIVITY**



**THINK  
TANK**

# COLLECT KEYS

After completing each puzzle, students  
will earn a "key"





# FINAL CODE

STUDENTS ENTER THE FINAL CODE 9-DIGIT CODE  
TO CRACK THE CASE.

ENTER THE  
9 DIGIT CODE TO  
THE THIEF'S VAULT

RETURN

