

# PLANTS AND PHOTOSYNTHESIS

# DIGITAL ESCAPE™

**PUZZLE 5** DECODE THE MISSING WORDS TO THE STATEMENT FOUND BELOW. YOU'LL NEED THIS ANSWER TO MOVE ON.

A	B	C	J	K	L
D	E	F	M	N	O
G	H	I	P	Q	R

~~S~~ ~~W~~  
T X Y  
U Z  
V

Chloroplasts and mitochondria...  
JFO  
O>JQ7LOV  
EC  
E7J00LOV



# 6 PASSAGES

Plants are living organisms that need food in order to survive. Unlike humans and animals who must consume other things, plants are known as autotrophs because they make their own food source through a process called photosynthesis. Photosynthesis is made up of the words 'photo', meaning light, and 'synthesis' meaning putting together. Through this process, energy is taken from sunlight and used to convert water and carbon dioxide into plant food and oxygen. This process is vital for humans and other living organisms and without it, the earth and its inhabitants would not be able to survive.

In 1771, Joseph Priestley began the study of photosynthesis by burning a candle in a closed container. He placed a mint sprig inside the container and observed that the mint produced a gas, later named oxygen. Dutch scientist Jan Ingenhousz expanded on the research of Priestley by exposing plants to light.

# 12 QUESTIONS

MULTIPLE CHOICE AND SHORT ANSWER

**What are plants known as because they make their own food source?**

Monotrophs

Autotrophs

Monoliths

Autoliths

**What did Joseph Priestley place in the jar with a burning candle?**

Type answer here

# 6 PUZZLES

Should students get "stuck" on a puzzle, hint cards can be found throughout the escape room.

**PUZZLE 6** DECODE THE MISSING WORDS BELOW. YOU'LL FIND THE KEY TO THE NEXT ROOM.

	1	2	3	4	5
1	D	B	E		C
2	K		H	I/J	F
3		P	N	O	M
4	T	R		Q	S
5		Z	X	V	W

Example: The letter "C" would be 5-I.

**PUZZLE 1** DECODE THE MISSING WORDS BELOW. YOU'LL FIND THE KEY TO THE NEXT ROOM.

Birds cannot locate these items.

- A   - E   - I   - M  
 - B   - F   - J   - N  
 - C   - G   - K   - O  
 - D   - H   - L   - P

**PUZZLE 3** DECODE THE MISSING WORDS BELOW. YOU'LL FIND THE KEY TO THE NEXT ROOM.

In the Outer Court  
2-1, 1-4, 1-3 3-6, 1-9 1-5,

**PUZZLE 5** DECODE THE MISSING WORDS BELOW. YOU'LL FIND THE KEY TO THE NEXT ROOM.

A	B	C	J	K	L
D	E	F	M	N	O
G	H	I	P	Q	R

~~S~~ ~~U~~   ~~W~~ ~~Y~~  
T V   X Z

**PUZZLE 4** DECODE THE MISSING WORDS BELOW. YOU'LL NEED THE KEY TO THE NEXT ROOM.

The In  
is b  
KZ  
V  
GIZM

**PUZZLE 2** DECODE THE MISSING WORDS BELOW. YOU'LL FIND THE KEY TO THE NEXT ROOM.

1	2	3
4	5	6
7	8	9

ABC DEF  
GHI JKL MNO  
PQRS TUV WXYZ

Back in the day, you would have to press the number multiple times to find a letter to send a text message.

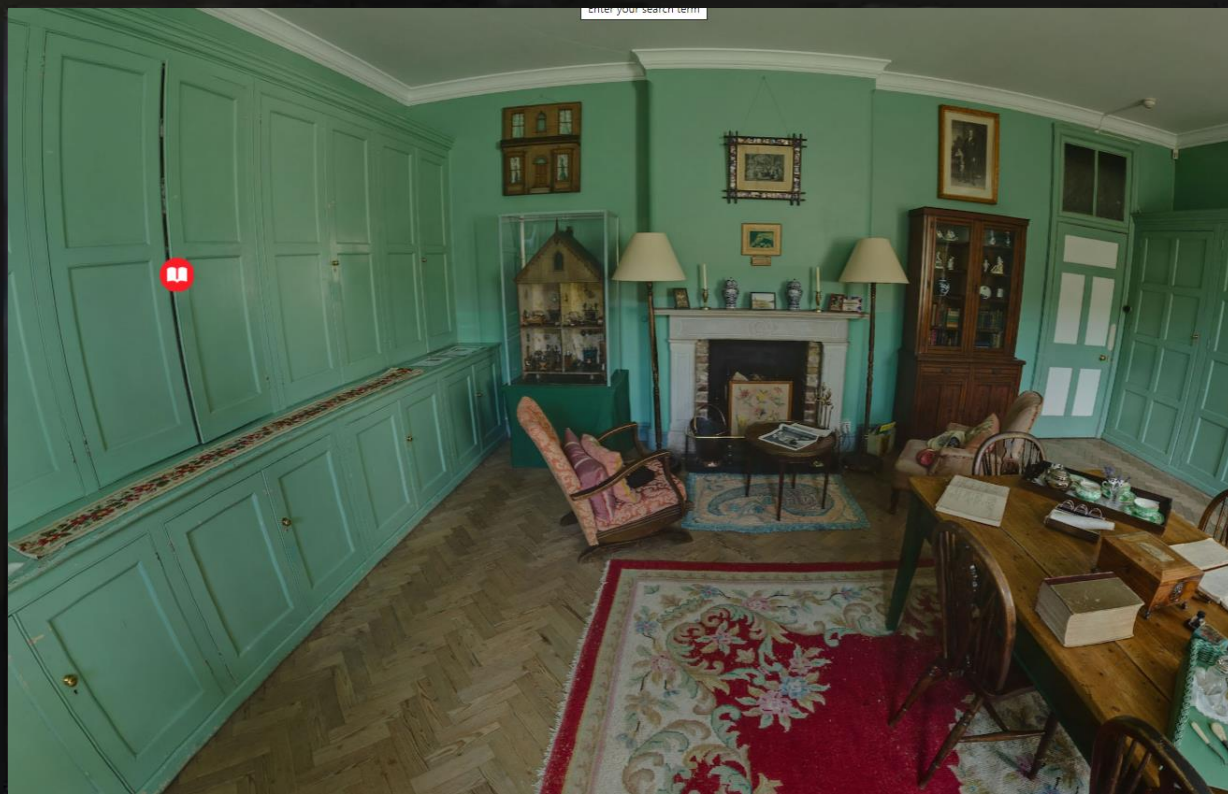
# SAMPLE

Test the link and solve some  
TEACHER PUZZLES!

[CLICK HERE](#)

# 360° VIEW

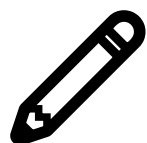
DRAG THE MOUSE OR KEYPAD TO MOVE THE SCREEN FOR A 360° VIEW!



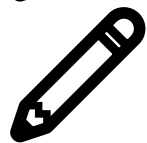
# WHAT'S INCLUDED?

- ✓ 6 SHORT READING PASSAGES
- ✓ 12 QUESTIONS TOTAL
- ✓ 6 PUZZLES
- ✓ STUDENT DIRECTIONS (DIGITAL)
- ✓ TEACHER ANSWER KEY
- ✓ PUZZLE HINTS
- ✓ URL LINK TO SHARE ON ANY LMS

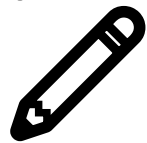
# WHAT'S NEEDED?



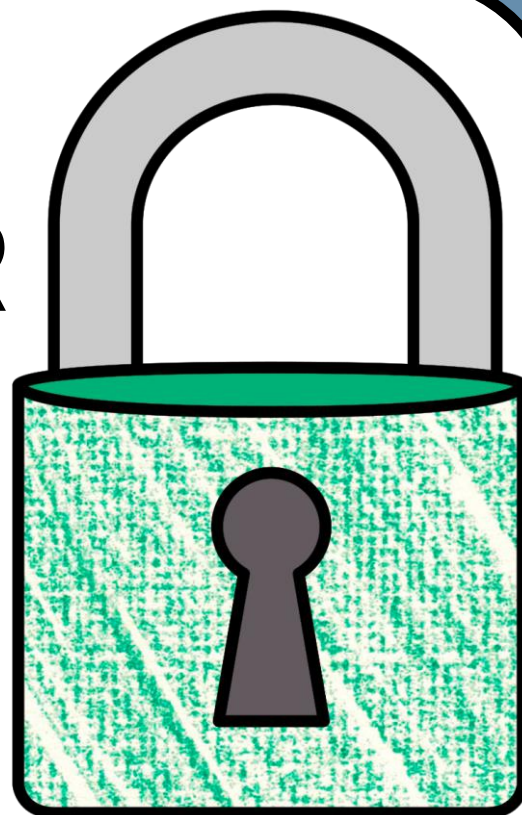
**SCRATCH PAPER**



**PENCILS**



**INTERNET**





# BENEFITS OF USE



**SELF-GRADING**



**IMMEDIATE STUDENT FEEDBACK**



**PAPERLESS**



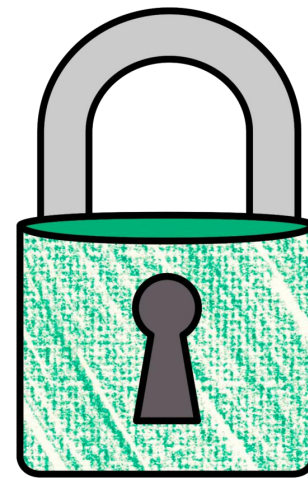
**NO PREP**



**SAVES YOU TIME**



**CRITICAL THINKING**



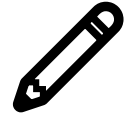
# OPTIONS FOR USE



**FRONT-LOADING**



**GROUP STATIONS**



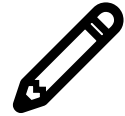
**SUB PLANS**



**UNIT REVIEW**



**ENRICHMENT ACTIVITY**



**TEAMWORK ACTIVITY**



**REWARD ACTIVITY**

