



**PREMIUM SOLAR PANELS**

# MITREX COLORED SOLAR PANELS

The World's Safest Solar Panels



[MITREX.COM](http://MITREX.COM)









The Mitrex vision is to simplify the integration of solar technology into everything around us and offer the construction industry the technology needed to turn any structure into a green micro power plant. From cladding to railings, windows, glass, acoustic barriers, military applications, and more, Mitrex sees a future where all surfaces the sun touches produce energy.

## TABLE OF CONTENT

### 1. Mitrex Colored Solar Panels

Why Mitrex Colored Solar Panels

Mitrex Products

### 2. Mitrex Solar Roof Projects

### 3. Mitrex Solar Panels Datasheets

Solar Black Asphalt 345W

Solar Grey Asphalt 330W

Solar Black Slate 320W

Solar Brown Asphalt 310W

Solar Spanish Clay 310W

M390-A1F

M395-B1F

M405-L3H / M405-I3H

### 4. Warranty - 25 Years Product / Performance Warranty

### 5. Colored Solar Panels Samples

  
**01**

# **MITREX COLORED SOLAR PANELS**



**CAN YOU SPOT  
THE DIFFERENCE?**

 MITREX™

**WHY MITREX  
COLORED SOLAR  
PANELS**





# CAN YOU SPOT THE DIFFERENCE?



## Join The Club of Americans with Stunning Colored Solar Panels.





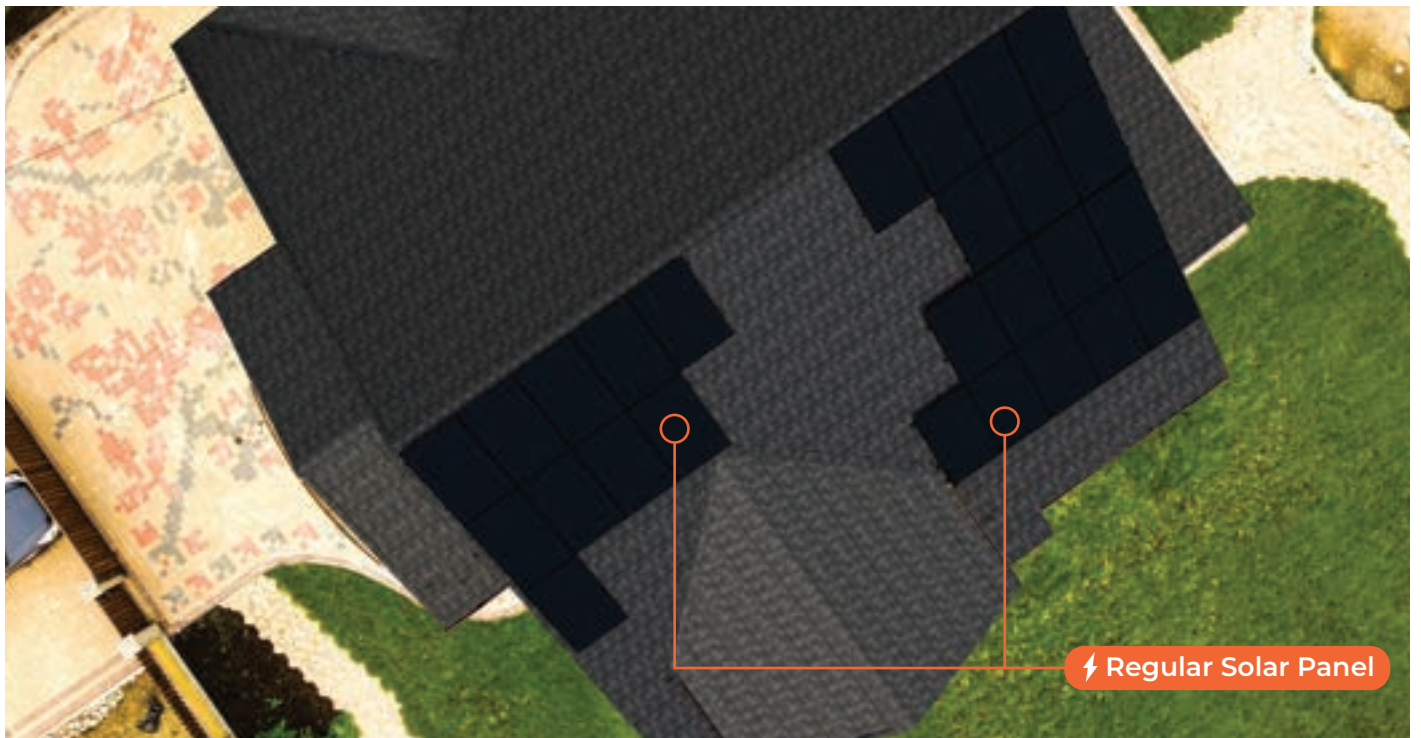
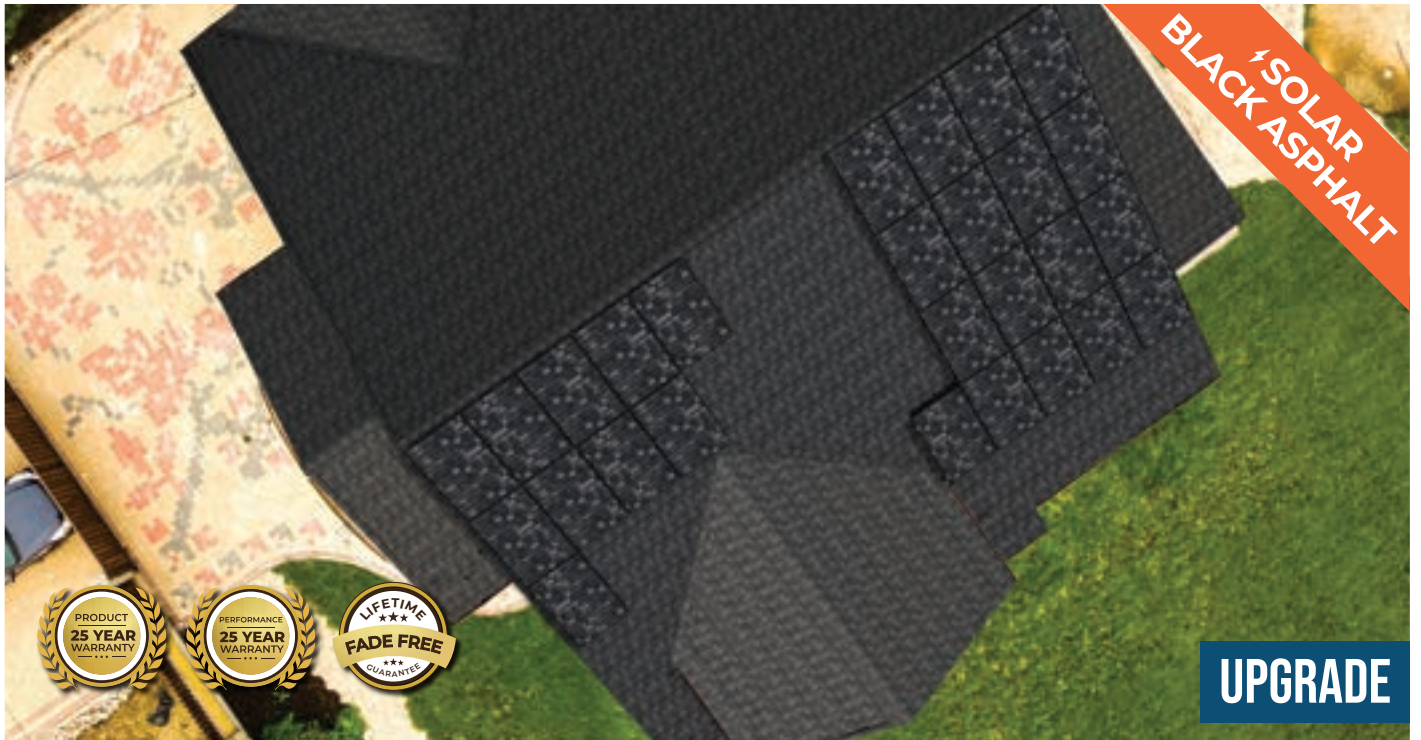
MITREX PLATINUM PROGRAM - COLORED SOLAR ROOF



MADE IN:  
North America



PERFORMANCE:  
High Efficiency Module



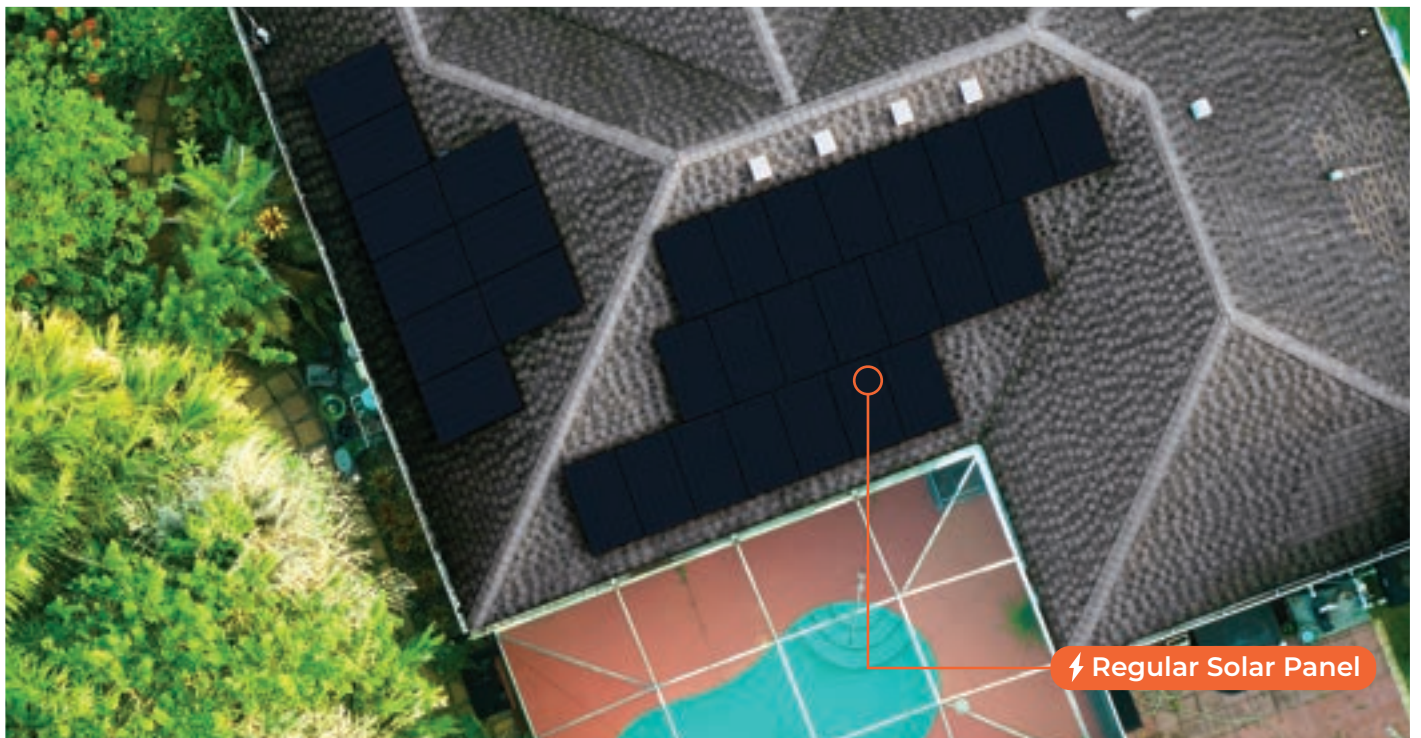
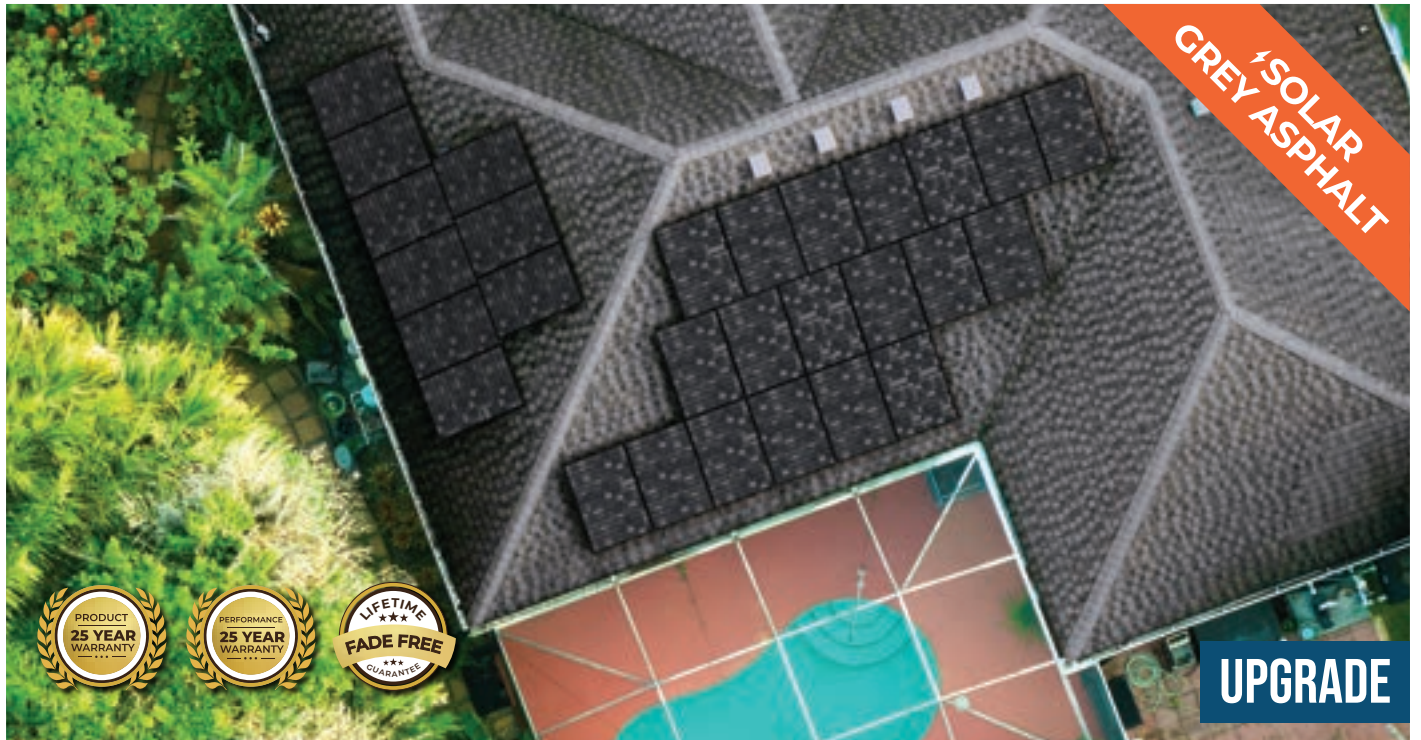
MITREX PLATINUM PROGRAM - COLORED SOLAR ROOF



MADE IN:  
North America



PERFORMANCE:  
High Efficiency Module



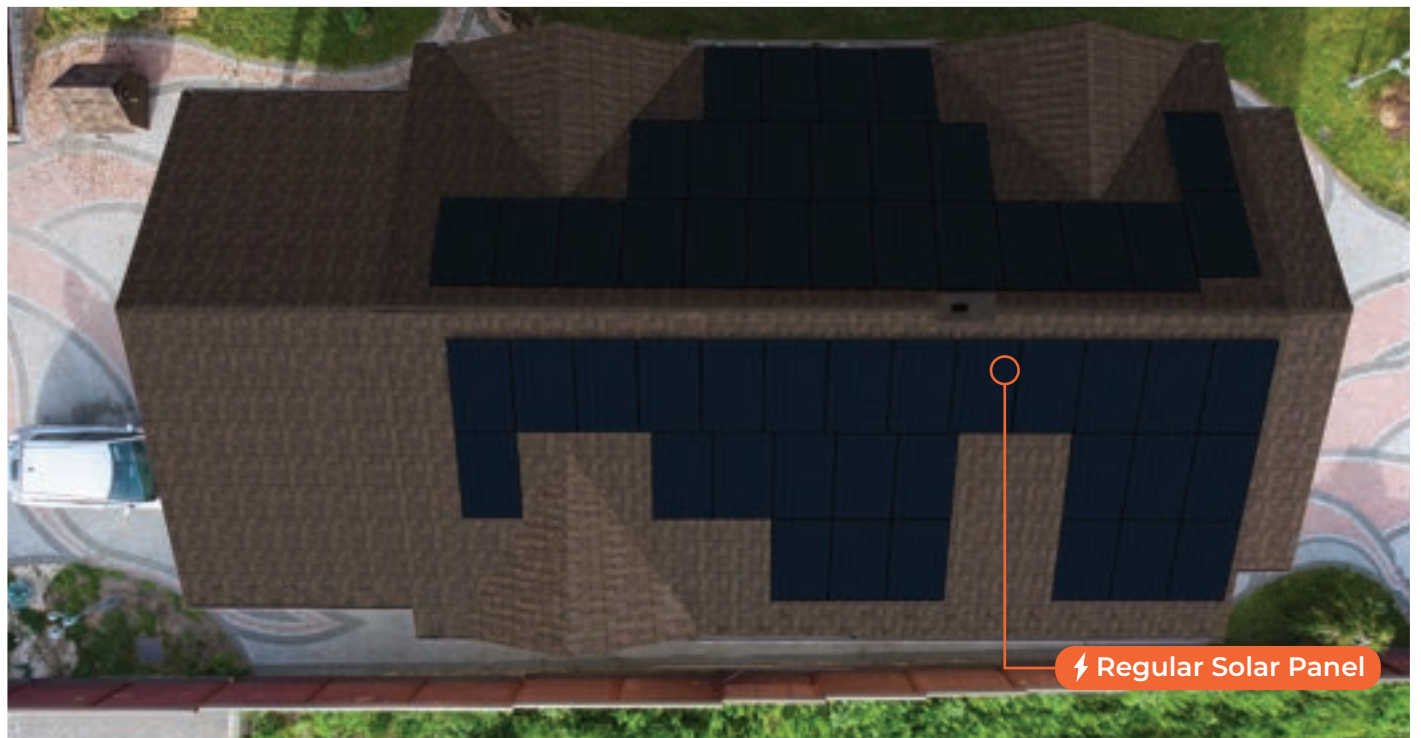
MITREX PLATINUM PROGRAM - COLORED SOLAR ROOF



MADE IN:  
**North America**



PERFORMANCE:  
**High Efficiency Module**



MITREX PLATINUM PROGRAM - COLORED SOLAR ROOF



MADE IN:  
North America



PERFORMANCE:  
High Efficiency Module







**02**

**MITREX COLORED SOLAR  
PANELS PORTFOLIO**



MADE IN  
CANADA

⚡ SOLAR  
BLACK SLATE



⚡ SOLAR  
BLACK SLATE

SCAN this  
QR code & how our  
panels are scratch free

















MADE IN CANADA

⚡ SOLAR  
CUSTOM SLATE



⚡ SOLAR  
CUSTOM SLATE





MADE IN CANADA

**SOLAR**  
**GREY ASPHALT**



**SOLAR**  
**GREY ASPHALT**

SCAN this  
QR code & how our  
panels are scratch free







**03**

**MITREX SOLAR PANELS  
TECHNICAL DATASHEETS**



# HIGH EFFICIENCY MONO COLOURED PV MODULE



**NORTH AMERICAN  
MANUFACTURER**

Mitrex is a world-leading manufacturer of standard solar and BIPV products based in Canada. With over 20 years of experience, Mitrex guarantees high-quality, fully-automated manufacturing and continuous innovation in solar technology.



**QUALITY, DURABILITY &  
PERFORMANCE**

Mitrex panels are engineered with the highest quality- featuring wide-ranging compatibility with racking and electrical components, advanced cell technology, ability to withstand high snow/wind load conditions, and high performing modules.



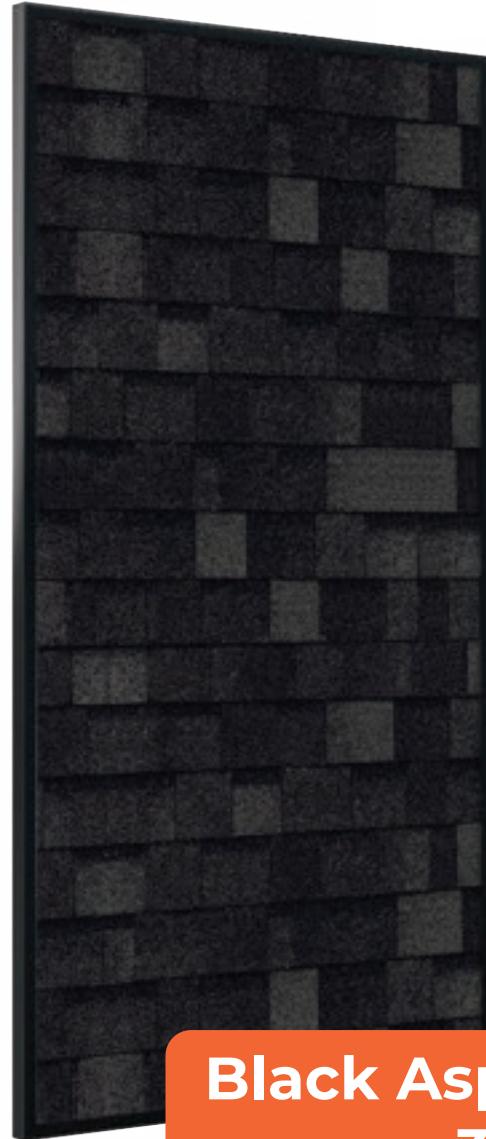
**25-YEAR PRODUCT &  
PERFORMANCE WARRANTY**

All our products come with an industry leading 25-year warranty for products and performance, ensuring the quality of the hardware, energy generation, and aesthetics are maintained.

**MITREX™**

BUILDING-INTEGRATED SOLAR TECHNOLOGY

THE WORLD'S LARGEST BIPV MANUFACTURER



**Black Asphalt  
345W**



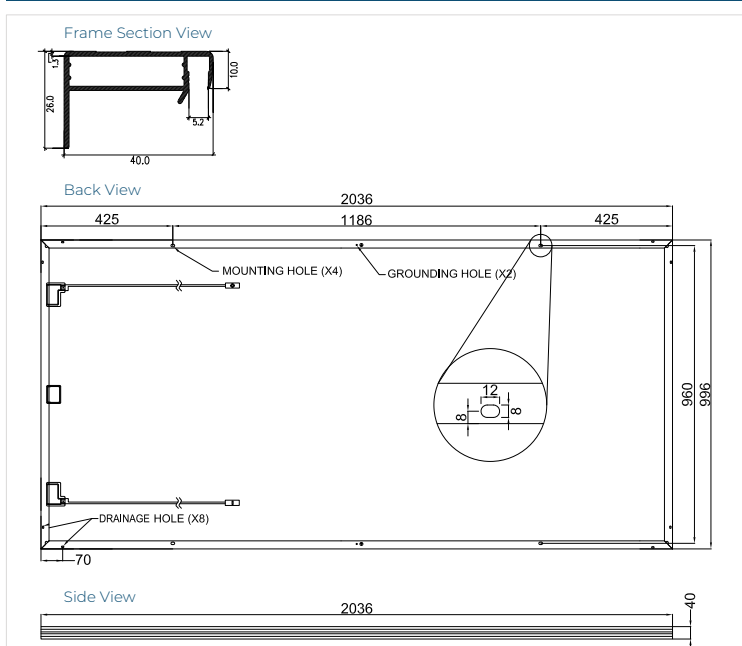
ELECTRICAL SPECIFICATIONS	SOLAR ROOF BLACK ASPHALT	I-V CURVES
<b>Test Conditions</b>	<b>STC</b>	
Module Power (Pmax)	345W	
Maximum Power Voltage (Vpmax)	41.0V	
Maximum Power Current (Ipmax)	8.41A	
Open Circuit Voltage (Voc)	48.9V	
Short Circuit Current (Isc)	8.94A	
Module Efficiency	17.0%	
Maximum System Voltage (VDC)	1000V (IEC/UL)	
Series Fuse Rating	20A	
Power & Other Electrical Specification Tolerance	5%	
Application Classification	Class A	

Measurement Conditions: STC 1000 W/m<sup>2</sup> - AM 1.5 - Temperature 25°C

MECHANICAL PROPERTIES	METRIC	IMPERIAL
Module Weight	22 kg	48.5 lbs
Dimensions (H x L x D)	2036 x 996 x 40mm	80.2 x 39.2 x 1.6in
Mechanical Test Load (Snow/Wind)	5400Pa front load / 5400Pa rear load	112.8psf front load / 112.8psf rear load
Hail Impact Resistance	ø 25mm at 83 km/h	ø 1in at 51.6 mph
Cells	72 [12x6] Mono-crystalline (158.75 x 158.75mm)	72 [12x6] Mono-crystalline (6.25 x 6.25in)
Glass	3.2mm tempered glass, high transmittance, anti-reflective coating	0.126in tempered glass, high transmittance, anti-reflective coating
Cables & Connectors (Refer to Installation Manual)	300mm, 1000mm, 1200mm - 4mm <sup>2</sup> , 12 AWG (UL) MC4 from Staubli	11.8in, 39.4in, 47.2in - 0.16in <sup>2</sup> , 12 AWG (UL) MC4 from Staubli
Pattern Orientation	Landscape & Portrait	
Backsheet	High durability, UV resistant, PV backsheet	
Frame	Anodized aluminum alloy black frame	
Bypass Diodes	3 diodes- 30SQ045T (45V max DC blocking voltage, 30A max forward rectified current)	
Junction Box	IP68 rated, TUV and UL certified	
Fire Rating	Type II	

TEMPERATURE RATINGS	SHIPPING		
Temperature Coefficient Isc	0.034%/°C	Modules Per Pallet	25
Temperature Coefficient Voc	-0.27%/°C	Pallets Per Truck	28
Temperature Coefficient Pmax	-0.36%/°C	Modules Per Truck	700
Nominal Module Operating Temperature	42 ± 3°C		
Operating Temperature	-40°C ~ +85°C		

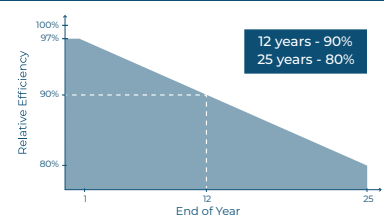
### ENGINEERING DRAWING



### WARRANTY

Product Warranty: 25 years  
Performance Warranty:

- ≥ 97% end of 1st year
- ≥ 90% end of 12th year
- ≥ 80% end of 25th year



### CERTIFICATIONS

UL 61730-1/-2, CSA C22.2 #61730-1/-2, IEC 61730-1/-2, UL 61215-1/-2, IEC 61215-1/-2, CSA 61215-1/-2, CEC Listed

- Datasheet is subjected to change without prior notice, always obtain the most recent version of the datasheet.  
- Caution: For professional use only, the installation, handling, and cleaning of PV modules should only be performed by qualified professionals. Read the Installation Manual for mounting specifications before handling, installing and operating modules.

Learn More:  
[mitrex.com](http://mitrex.com)    [info@mitrex.com](mailto:info@mitrex.com)

<b>Headquarters:</b> 41 Racine Rd., Toronto, ON M9W 2Z4, Canada +1 (855) 254 0214 (Toll Free)	<b>West USA Location:</b> 10880 Wilshire Blvd Suite 1101, Los Angeles, CA 90024, USA +1 (323) 301 7978	<b>East USA Location:</b> 1 Rockefeller Plaza Fl 11, New York, NY 10020, USA +1 (646) 583 4486
---	--	--

# HIGH EFFICIENCY MONO COLOURED PV MODULE



**NORTH AMERICAN  
MANUFACTURER**

Mitrex is a world-leading manufacturer of standard solar and BIPV products based in Canada. With over 20 years of experience, Mitrex guarantees high-quality, fully-automated manufacturing and continuous innovation in solar technology.



**QUALITY, DURABILITY &  
PERFORMANCE**

Mitrex panels are engineered with the highest quality- featuring wide-ranging compatibility with racking and electrical components, advanced cell technology, ability to withstand high snow/wind load conditions, and high performing modules.



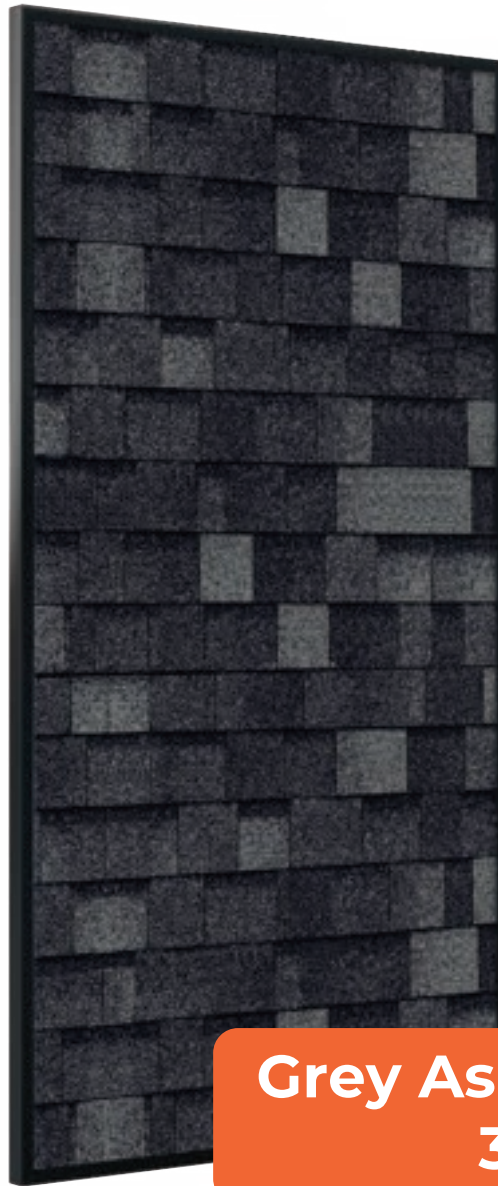
**25-YEAR PRODUCT &  
PERFORMANCE WARRANTY**

All our products come with an industry leading 25-year warranty for products and performance, ensuring the quality of the hardware, energy generation, and aesthetics are maintained.

**MITREX™**

BUILDING-INTEGRATED SOLAR TECHNOLOGY

THE WORLD'S LARGEST BIPV MANUFACTURER



**Grey Asphalt  
330W**



ELECTRICAL SPECIFICATIONS	SOLAR ROOF GREY ASPHALT	I-V CURVES
<b>Test Conditions</b>	<b>STC</b>	
Module Power (Pmax)	330W	
Maximum Power Voltage (Vpmax)	40.8V	
Maximum Power Current (Ipmax)	8.09A	
Open Circuit Voltage (Voc)	48.7V	
Short Circuit Current (Isc)	8.55A	
Module Efficiency	16.3%	
Maximum System Voltage (VDC)	1000V (IEC/UL)	
Series Fuse Rating	20A	
Power & Other Electrical Specification Tolerance	5%	
Application Classification	Class A	

Measurement Conditions: STC 1000 W/m<sup>2</sup> - AM 1.5 - Temperature 25°C

MECHANICAL PROPERTIES	METRIC	IMPERIAL
Module Weight	22 kg	48.5 lbs
Dimensions (H x L x D)	2036 x 996 x 40mm	80.2 x 39.2 x 1.6in
Mechanical Test Load (Snow/Wind)	5400Pa front load / 5400Pa rear load	112.8psf front load / 112.8psf rear load
Hail Impact Resistance	ø 25mm at 83 km/h	ø 1in at 51.6 mph
Cells	72 [12x6] Mono-crystalline (158.75 x 158.75mm)	72 [12x6] Mono-crystalline (6.25 x 6.25in)
Glass	3.2mm tempered glass, high transmittance, anti-reflective coating	0.126in tempered glass, high transmittance, anti-reflective coating
Cables & Connectors (Refer to Installation Manual)	300mm, 1000mm, 1200mm - 4mm <sup>2</sup> , 12 AWG (UL) MC4 from Staubli	11.8in, 39.4in, 47.2in - 0.16in <sup>2</sup> , 12 AWG (UL) MC4 from Staubli
Pattern Orientation	Landscape & Portrait	
Backsheet	High durability, UV resistant, PV backsheet	
Frame	Anodized aluminum alloy black frame	
Bypass Diodes	3 diodes- 30SQ045T (45V max DC blocking voltage, 30A max forward rectified current)	
Junction Box	IP68 rated, TUV and UL certified	
Fire Rating	Type II	

TEMPERATURE RATINGS	SHIPPING
Temperature Coefficient Isc	0.032% /°C
Temperature Coefficient Voc	-0.27% /°C
Temperature Coefficient Pmax	-0.36% /°C
Nominal Module Operating Temperature	42 ± 3°C
Operating Temperature	-40°C ~ +85°C
	Modules Per Pallet
	25
	Pallets Per Truck
	28
	Modules Per Truck
	700

ENGINEERING DRAWING	WARRANTY
	<p>Product Warranty: 25 years Performance Warranty:</p> <ul style="list-style-type: none"> <li>≥ 97% end of 1st year</li> <li>≥ 90% end of 12th year</li> <li>≥ 80% end of 25th year</li> </ul>
	<p><b>CERTIFICATIONS</b></p> <p>UL 61730-1/-2, CSA C22.2 #61730-1/-2, IEC 61730-1/-2, UL 61215-1/-2, IEC 61215-1/-2, CSA 61215-1/-2, CEC Listed</p> <p>- Datasheet is subjected to change without prior notice, always obtain the most recent version of the datasheet. - Caution: For professional use only, the installation, handling, and cleaning of PV modules should only be performed by qualified professionals. Read the Installation Manual for mounting specifications before handling, installing and operating modules.</p>
	<p>Learn More:</p> <p><a href="http://mitrex.com">mitrex.com</a> <a href="mailto:info@mitrex.com">info@mitrex.com</a></p> <p>Headquarters: 41 Racine Rd., Toronto, ON M9W 2Z4, Canada   +1 (855) 254 0214 (Toll Free)</p> <p>West USA Location: 10880 Wilshire Blvd Suite 1101, Los Angeles, CA 90024, USA   +1 (323) 301 7978</p> <p>East USA Location: 1 Rockefeller Plaza Fl 11, New York, NY 10020, USA   +1 (646) 583 4486</p>

# HIGH EFFICIENCY MONO COLOURED PV MODULE



**NORTH AMERICAN  
MANUFACTURER**

Mitrex is a world-leading manufacturer of standard solar and BIPV products based in Canada. With over 20 years of experience, Mitrex guarantees high-quality, fully-automated manufacturing and continuous innovation in solar technology.



**QUALITY, DURABILITY &  
PERFORMANCE**

Mitrex panels are engineered with the highest quality- featuring wide-ranging compatibility with racking and electrical components, advanced cell technology, ability to withstand high snow/wind load conditions, and high performing modules.



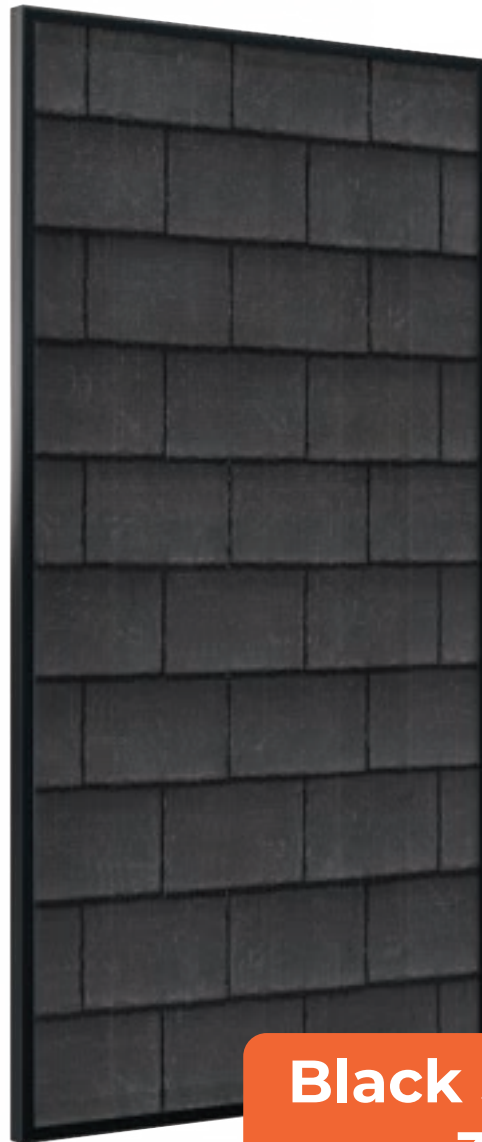
**25-YEAR PRODUCT &  
PERFORMANCE WARRANTY**

All our products come with an industry leading 25-year warranty for products and performance, ensuring the quality of the hardware, energy generation, and aesthetics are maintained.

**MITREX™**

BUILDING-INTEGRATED SOLAR TECHNOLOGY

THE WORLD'S LARGEST BIPV MANUFACTURER



**Black Slate  
320W**



ELECTRICAL SPECIFICATIONS	SOLAR ROOF BLACK SLATE	I-V CURVES
<b>Test Conditions</b>	<b>STC</b>	
Module Power (Pmax)	320W	<p><b>Irradiances</b></p> <ul style="list-style-type: none"> <li>1000 W/m<sup>2</sup></li> <li>800 W/m<sup>2</sup></li> <li>600 W/m<sup>2</sup></li> <li>400 W/m<sup>2</sup></li> <li>200 W/m<sup>2</sup></li> </ul> <p><b>Temperatures</b></p> <ul style="list-style-type: none"> <li>-15 Degree</li> <li>5 Degree</li> <li>25 Degree</li> <li>45 Degree</li> <li>65 Degree</li> </ul>
Maximum Power Voltage (Vpmax)	41.7V	
Maximum Power Current (Ipmax)	7.67A	
Open Circuit Voltage (Voc)	48.2V	
Short Circuit Current (Isc)	8.42A	
Module Efficiency	15.8%	
Maximum System Voltage (VDC)	1000V (IEC/UL)	
Series Fuse Rating	20A	
Power & Other Electrical Specification Tolerance	5%	
Application Classification	Class A	

Measurement Conditions: STC 1000 W/m<sup>2</sup> - AM 1.5 - Temperature 25°C

MECHANICAL PROPERTIES	METRIC	IMPERIAL
Module Weight	22 kg	48.5 lbs
Dimensions (H x L x D)	2036 x 996 x 40mm	80.2 x 39.2 x 1.6in
Mechanical Test Load (Snow/Wind)	5400Pa front load / 5400Pa rear load	112.8psf front load / 112.8psf rear load
Hail Impact Resistance	ø 25mm at 83 km/h	ø 1in at 51.6 mph
Cells	72 [12x6] Mono-crystalline (158.75 x 158.75mm)	72 [12x6] Mono-crystalline (6.25 x 6.25in)
Glass	3.2mm tempered glass, high transmittance, anti-reflective coating	0.126in tempered glass, high transmittance, anti-reflective coating
Cables & Connectors (Refer to Installation Manual)	300mm, 1000mm, 1200mm - 4mm <sup>2</sup> , 12 AWG (UL) MC4 from Staubli	11.8in, 39.4in, 47.2in - 0.16in <sup>2</sup> , 12 AWG (UL) MC4 from Staubli
Pattern Orientation	Landscape & Portrait	
Backsheet	High durability, UV resistant, PV backsheet	
Frame	Anodized aluminum alloy black frame	
Bypass Diodes	3 diodes- 30SQ045T (45V max DC blocking voltage, 30A max forward rectified current)	
Junction Box	IP68 rated, TUV and UL certified	
Fire Rating	Type II	

TEMPERATURE RATINGS	SHIPPING		
Temperature Coefficient Isc	0.036% /°C	Modules Per Pallet	25
Temperature Coefficient Voc	-0.27% /°C	Pallets Per Truck	28
Temperature Coefficient Pmax	-0.36% /°C	Modules Per Truck	700
Nominal Module Operating Temperature	42 ± 3°C		
Operating Temperature	-40°C ~ +85°C		

ENGINEERING DRAWING	WARRANTY
<p><b>Frame Section View</b></p> <p><b>Back View</b></p> <p><b>Side View</b></p>	<p>Product Warranty: 25 years Performance Warranty:</p> <ul style="list-style-type: none"> <li>≥ 97% end of 1st year</li> <li>≥ 90% end of 12th year</li> <li>≥ 80% end of 25th year</li> </ul> <p>12 years - 90% 25 years - 80%</p>
	<p><b>CERTIFICATIONS</b></p> <p>UL 61730-1/-2, CSA C22.2 #61730-1/-2, IEC 61730-1/-2, CEC Listed</p> <p>- Datasheet is subjected to change without prior notice, always obtain the most recent version of the datasheet. - Caution: For professional use only, the installation, handling, and cleaning of PV modules should only be performed by qualified professionals. Read the Installation Manual for mounting specifications before handling, installing and operating modules.</p>
	<p>Learn More:</p> <p><a href="http://mitrex.com">mitrex.com</a> <a href="mailto:info@mitrex.com">info@mitrex.com</a></p> <p>Headquarters: 41 Racine Rd., Toronto, ON M9W 2Z4, Canada   +1 (855) 254 0214 (Toll Free)</p> <p>West USA Location: 10880 Wilshire Blvd Suite 1101, Los Angeles, CA 90024, USA   +1 (323) 301 7978</p> <p>East USA Location: 1 Rockefeller Plaza Fl 11, New York, NY 10020, USA   +1 (646) 583 4486</p>

# HIGH EFFICIENCY MONO COLOURED PV MODULE



**NORTH AMERICAN  
MANUFACTURER**

Mitrex is a world-leading manufacturer of standard solar and BIPV products based in Canada. With over 20 years of experience, Mitrex guarantees high-quality, fully-automated manufacturing and continuous innovation in solar technology.



**QUALITY, DURABILITY &  
PERFORMANCE**

Mitrex panels are engineered with the highest quality- featuring wide-ranging compatibility with racking and electrical components, advanced cell technology, ability to withstand high snow/wind load conditions, and high performing modules.



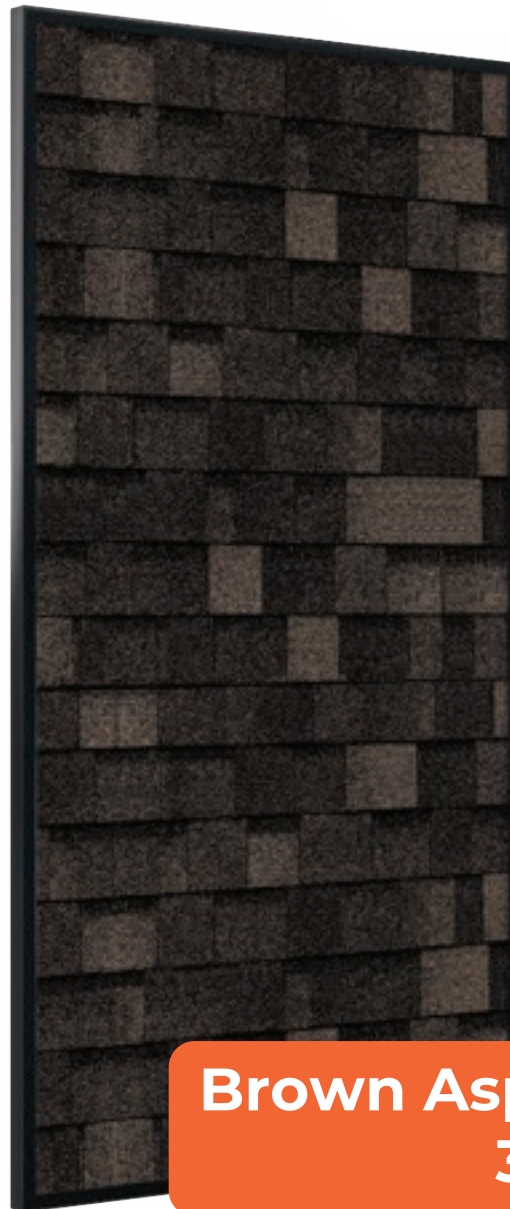
**25-YEAR PRODUCT &  
PERFORMANCE WARRANTY**

All our products come with an industry leading 25-year warranty for products and performance, ensuring the quality of the hardware, energy generation, and aesthetics are maintained.

**MITREX™**

BUILDING-INTEGRATED SOLAR TECHNOLOGY

THE WORLD'S LARGEST BIPV MANUFACTURER



**Brown Asphalt  
310W**



ELECTRICAL SPECIFICATIONS	SOLAR ROOF BROWN ASPHALT	I-V CURVES
<b>Test Conditions</b>	<b>STC</b>	
Module Power (Pmax)	310W	<p>The I-V curves show the relationship between current (0 to 60 A) and power (0 to 10 W) for different irradiances (200, 400, 600, 800, 1000 W/m²) and temperatures (-15, 5, 25, 45, 65 Degree). Power increases with irradiance and decreases with temperature.</p>
Maximum Power Voltage (Vpmax)	40.6V	
Maximum Power Current (Ipmax)	7.64A	
Open Circuit Voltage (Voc)	48.5V	
Short Circuit Current (Isc)	8.03A	
Module Efficiency	15.3%	
Maximum System Voltage (VDC)	1000V (IEC/UL)	
Series Fuse Rating	20A	
Power & Other Electrical Specification Tolerance	5%	
Application Classification	Class A	

Measurement Conditions: STC 1000 W/m² - AM 1.5 - Temperature 25°C

MECHANICAL PROPERTIES	METRIC	IMPERIAL
Module Weight	22 kg	48.5 lbs
Dimensions (H x L x D)	2036 x 996 x 40mm	80.2 x 39.2 x 1.6in
Mechanical Test Load (Snow/Wind)	5400Pa front load / 5400Pa rear load	112.8psf front load / 112.8psf rear load
Hail Impact Resistance	ø 25mm at 83 km/h	ø 1in at 51.6 mph
Cells	72 [12x6] Mono-crystalline (158.75 x 158.75mm)	72 [12x6] Mono-crystalline (6.25 x 6.25in)
Glass	3.2mm tempered glass, high transmittance, anti-reflective coating	0.126in tempered glass, high transmittance, anti-reflective coating
Cables & Connectors (Refer to Installation Manual)	300mm, 1000mm, 1200mm - 4mm², 12 AWG (UL) MC4 from Staubli	11.8in, 39.4in, 47.2in - 0.16in², 12 AWG (UL) MC4 from Staubli
Pattern Orientation	Landscape & Portrait	
Backsheet	High durability, UV resistant, PV backsheet	
Frame	Anodized aluminum alloy black frame	
Bypass Diodes	3 diodes- 30SQ045T (45V max DC blocking voltage, 30A max forward rectified current)	
Junction Box	IP68 rated, TUV and UL certified	
Fire Rating	Type II	

TEMPERATURE RATINGS	SHIPPING		
Temperature Coefficient Isc	0.029% /°C	Modules Per Pallet	25
Temperature Coefficient Voc	-0.27% /°C	Pallets Per Truck	28
Temperature Coefficient Pmax	-0.36% /°C	Modules Per Truck	700
Nominal Module Operating Temperature	42 ± 3°C		
Operating Temperature	-40°C ~ +85°C		

ENGINEERING DRAWING	WARRANTY
<p>The engineering drawing includes three views: Frame Section View (top), Back View (middle), and Side View (bottom). Dimensions are provided in millimeters. The Back View shows a rectangular frame with a width of 2036mm and a height of 996mm. It features four mounting holes, two grounding holes, and eight drainage holes. A circular detail shows a hole with a diameter of 12mm. The Side View shows a height of 40mm.</p>	<p>Product Warranty: 25 years Performance Warranty:</p> <ul style="list-style-type: none"> <li>≥ 97% end of 1st year</li> <li>≥ 90% end of 12th year</li> <li>≥ 80% end of 25th year</li> </ul> <p>The graph shows Relative Efficiency (80% to 100%) on the y-axis and End of Year (1, 12, 25) on the x-axis. A blue shaded area represents the warranty performance, starting at 97% at year 1 and ending at 80% at year 25. A callout box indicates: 12 years - 90%, 25 years - 80%.</p>
	<p><b>CERTIFICATIONS</b></p> <p>UL 61730-1/-2, CSA C22.2 #61730-1/-2, IEC 61730-1/-2, UL 61215-1/-2, IEC 61215-1/-2, CSA 61215-1/-2, CEC Listed</p> <p>- Datasheet is subjected to change without prior notice, always obtain the most recent version of the datasheet. - Caution: For professional use only, the installation, handling, and cleaning of PV modules should only be performed by qualified professionals. Read the Installation Manual for mounting specifications before handling, installing and operating modules.</p>
	<p>Learn More:</p> <p>mitrex.com    info@mitrex.com</p> <p>Headquarters: 41 Racine Rd., Toronto, ON M9W 2Z4, Canada    +1 (855) 254 0214 (Toll Free)</p> <p>West USA Location: 10880 Wilshire Blvd Suite 1101, Los Angeles, CA 90024, USA    +1 (323) 301 7978</p> <p>East USA Location: 1 Rockefeller Plaza Fl 11, New York, NY 10020, USA    +1 (646) 583 4486</p>



# HIGH EFFICIENCY MONO COLOURED PV MODULE



**NORTH AMERICAN  
MANUFACTURER**

Mitrex is a world-leading manufacturer of standard solar and BIPV products based in Canada. With over 20 years of experience, Mitrex guarantees high-quality, fully-automated manufacturing and continuous innovation in solar technology.



**QUALITY, DURABILITY &  
PERFORMANCE**

Mitrex panels are engineered with the highest quality- featuring wide-ranging compatibility with racking and electrical components, advanced cell technology, ability to withstand high snow/wind load conditions, and high performing modules.



**25-YEAR PRODUCT &  
PERFORMANCE WARRANTY**

All our products come with an industry leading 25-year warranty for products and performance, ensuring the quality of the hardware, energy generation, and aesthetics are maintained.

**MITREX™**

BUILDING-INTEGRATED SOLAR TECHNOLOGY

THE WORLD'S LARGEST BIPV MANUFACTURER



**Spanish Clay  
310W**



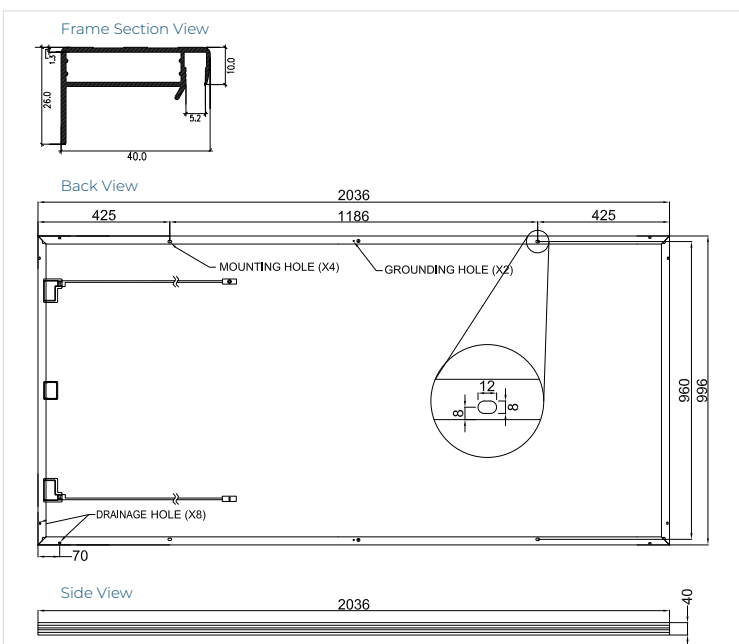
ELECTRICAL SPECIFICATIONS	SOLAR ROOF SPANISH CLAY	I-V CURVES
<b>Test Conditions</b>	<b>STC</b>	
Module Power (Pmax)	310W	
Maximum Power Voltage (Vpmax)	40.6V	
Maximum Power Current (Ipmax)	7.64A	
Open Circuit Voltage (Voc)	48.5V	
Short Circuit Current (Isc)	8.03A	
Module Efficiency	15.3%	
Maximum System Voltage (VDC)	1000V (IEC/UL)	
Series Fuse Rating	20A	
Power & Other Electrical Specification Tolerance	5%	
Application Classification	Class A	

Measurement Conditions: STC 1000 W/m<sup>2</sup> - AM 1.5 - Temperature 25°C

MECHANICAL PROPERTIES	METRIC	IMPERIAL
Module Weight	22 kg	48.5 lbs
Dimensions (H x L x D)	2036 x 996 x 40mm	80.2 x 39.2 x 1.6in
Mechanical Test Load (Snow/Wind)	5400Pa front load / 5400Pa rear load	112.8psf front load / 112.8psf rear load
Hail Impact Resistance	ø 25mm at 83 km/h	ø 1in at 51.6 mph
Cells	72 [12x6] Mono-crystalline (158.75 x 158.75mm)	72 [12x6] Mono-crystalline (6.25 x 6.25in)
Glass	3.2mm tempered glass, high transmittance, anti-reflective coating	0.126in tempered glass, high transmittance, anti-reflective coating
Cables & Connectors (Refer to Installation Manual)	300mm, 1000mm, 1200mm - 4mm <sup>2</sup> , 12 AWG (UL) MC4 from Staubli	11.8in, 39.4in, 47.2in - 0.16in <sup>2</sup> , 12 AWG (UL) MC4 from Staubli
Pattern Orientation	Landscape & Portrait	
Backsheet	High durability, UV resistant, PV backsheet	
Frame	Anodized aluminum alloy black frame	
Bypass Diodes	3 diodes- 30SQ045T (45V max DC blocking voltage, 30A max forward rectified current)	
Junction Box	IP68 rated, TUV and UL certified	
Fire Rating	Type II	

TEMPERATURE RATINGS	SHIPPING		
Temperature Coefficient Isc	0.036% /°C	Modules Per Pallet	25
Temperature Coefficient Voc	-0.27% /°C	Pallets Per Truck	28
Temperature Coefficient Pmax	-0.36% /°C	Modules Per Truck	700
Nominal Module Operating Temperature	42 ± 3°C		
Operating Temperature	-40°C ~ +85°C		

ENGINEERING DRAWING	WARRANTY
---------------------	----------



**Product Warranty: 25 years**  
**Performance Warranty:**

- ≥ 97% end of 1st year
- ≥ 90% end of 12th year
- ≥ 80% end of 25th year

**CERTIFICATIONS**

UL 61730-1/-2, CSA C22.2 #61730-1/-2, IEC 61730-1/-2, UL 61215-1/-2, IEC 61215-1/-2, CSA 61215-1/-2, CEC Listed

- Datasheet is subjected to change without prior notice, always obtain the most recent version of the datasheet.  
- Caution: For professional use only, the installation, handling, and cleaning of PV modules should only be performed by qualified professionals. Read the Installation Manual for mounting specifications before handling, installing and operating modules.

Learn More:  
[mitrex.com](http://mitrex.com)   [info@mitrex.com](mailto:info@mitrex.com)

Headquarters: 41 Racine Rd., Toronto, ON M9W 2Z4, Canada | +1 (855) 254 0214 (Toll Free)

West USA Location: 10880 Wilshire Blvd Suite 1101, Los Angeles, CA 90024, USA | +1 (323) 301 7978

East USA Location: 1 Rockefeller Plaza Fl 11, New York, NY 10020, USA | +1 (646) 583 4486

# HIGH EFFICIENCY MONO PV MODULE



**NORTH AMERICAN  
MANUFACTURER**

Mitrex is a world-leading manufacturer of standard solar and BIPV products based in Canada. With over 20 years of experience, Mitrex guarantees high-quality, fully-automated manufacturing and continuous innovation in solar technology.



**QUALITY, DURABILITY &  
PERFORMANCE**

Mitrex panels are engineered with the highest quality- featuring wide-ranging compatibility with racking and electrical components, advanced cell technology, ability to withstand high snow/wind load conditions, and high performing modules.

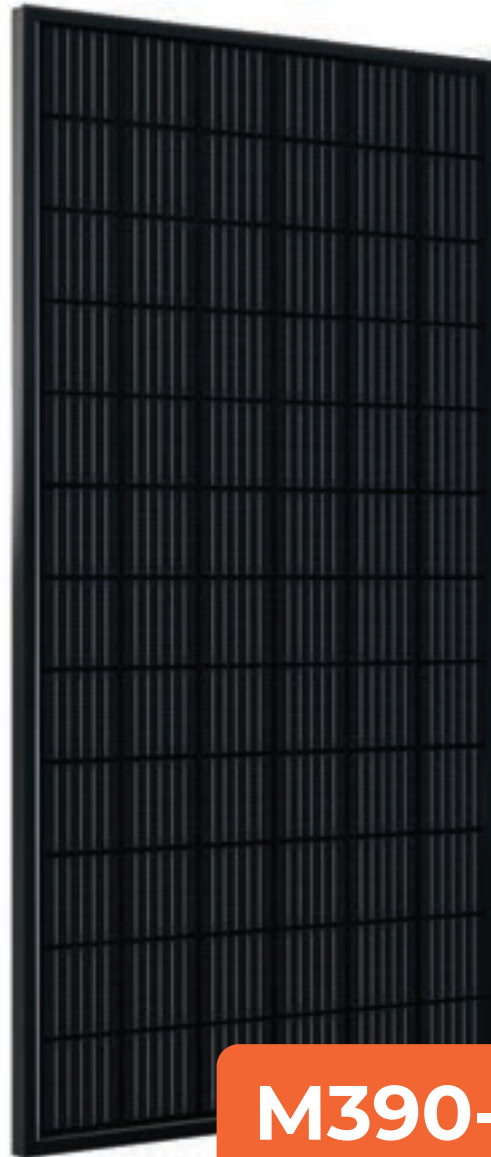


**25-YEAR PRODUCT &  
PERFORMANCE WARRANTY**

All our products come with an industry leading 25-year warranty for products and performance, ensuring the quality of the hardware, energy generation, and aesthetics are maintained.



**THE WORLD'S LARGEST BIPV MANUFACTURER**



**M390-A1F**



ELECTRICAL SPECIFICATIONS	SOLAR PANEL M390-A1F	I-V CURVES
<b>Test Conditions</b>	<b>STC</b>	
Module Power (Pmax)	390W	
Maximum Power Voltage (Vpmax)	41.9V	
Maximum Power Current (Ipmax)	9.31A	
Open Circuit Voltage (Voc)	48.2V	
Short Circuit Current (Isc)	9.97A	
Module Efficiency	19.2%	
Maximum System Voltage (VDC)	1000V (IEC/UL)	
Series Fuse Rating	20A	
Power & Other Electrical Specification Tolerance	5%	
Application Classification	Class A	

Measurement Conditions: STC 1000 W/m<sup>2</sup> - AM 1.5 - Temperature 25°C

MECHANICAL PROPERTIES	METRIC	IMPERIAL
Module Weight	22 kg	48.5 lbs
Dimensions (H x L x D)	2036 x 996 x 40mm	80.2 x 39.2 x 1.6in
Mechanical Test Load (Snow/Wind)	5400Pa front load / 5400Pa rear load	112.8psf front load / 112.8psf rear load
Hail Impact Resistance	Ø 25mm at 83 km/h	Ø 1in at 51.6 mph
Cells	72 [12x6] Mono-crystalline (158.75 x 158.75mm)	72 [12x6] Mono-crystalline (6.25 x 6.25in)
Glass	3.2mm tempered glass, high transmittance, anti-reflective coating	0.126in tempered glass, high transmittance, anti-reflective coating
Cables & Connectors (Refer to Installation Manual)	300mm, 1000mm, 1200mm - 4mm <sup>2</sup> , 12 AWG (UL) MC4 from Staubli	11.8in, 39.4in, 47.2in - 0.16in <sup>2</sup> , 12 AWG (UL) MC4 from Staubli
Backsheet	High durability, UV resistant, PV backsheet	
Frame	Anodized aluminum alloy black frame	
Bypass Diodes	3 diodes- 30SQ045T (45V max DC blocking voltage, 30A max forward rectified current)	
Junction Box	IP68 rated, TUV and UL certified	
Fire Rating	Type II	

TEMPERATURE RATINGS	SHIPPING
Temperature Coefficient Isc	0.037% /°C
Temperature Coefficient Voc	-0.27% /°C
Temperature Coefficient Pmax	-0.36% /°C
Nominal Module Operating Temperature	42 ± 3°C
Operating Temperature	-40°C ~ +85°C
	Modules Per Pallet
	25
	Pallets Per Truck
	28
	Modules Per Truck
	700

ENGINEERING DRAWING	WARRANTY
	<p>Product Warranty: 25 years Performance Warranty:</p> <ul style="list-style-type: none"> <li>≥ 97% end of 1st year</li> <li>≥ 90% end of 12th year</li> <li>≥ 80% end of 25th year</li> </ul>
	<p><b>CERTIFICATIONS</b></p> <p>UL 61730-1/-2, CSA C22.2 #61730-1/-2, IEC 61730-1/-2, UL 61215-1/-2, IEC 61215-1/-2, CSA 61215-1/-2, CEC Listed</p> <p>- Datasheet is subjected to change without prior notice, always obtain the most recent version of the datasheet. - Caution: For professional use only, the installation, handling, and cleaning of PV modules should only be performed by qualified professionals. Read the Installation Manual for mounting specifications before handling, installing and operating modules.</p>
	<p>Learn More:</p> <p><a href="http://mitrex.com">mitrex.com</a>   <a href="mailto:info@mitrex.com">info@mitrex.com</a></p>
	<p>Headquarters: 41 Racine Rd., Toronto, ON M9W 2Z4, Canada   +1 (855) 254 0214 (Toll Free)</p> <p>West USA Location: 10880 Wilshire Blvd Suite 1101, Los Angeles, CA 90024, USA   +1 (323) 301 7978</p> <p>East USA Location: 1 Rockefeller Plaza Fl 11, New York, NY 10020, USA   +1 (646) 583 4486</p>

# HIGH EFFICIENCY MONO PV MODULE



## NORTH AMERICAN MANUFACTURER

Mitrex is a world-leading manufacturer of standard solar and BIPV products based in Canada. With over 20 years of experience, Mitrex guarantees high-quality, fully-automated manufacturing and continuous innovation in solar technology.



## QUALITY, DURABILITY & PERFORMANCE

Mitrex panels are engineered with the highest quality- featuring wide-ranging compatibility with racking and electrical components, advanced cell technology, ability to withstand high snow/wind load conditions, and high performing modules.



## 25-YEAR PRODUCT & PERFORMANCE WARRANTY

All our products come with an industry leading 25-year warranty for products and performance, ensuring the quality of the hardware, energy generation, and aesthetics are maintained.



THE WORLD'S LARGEST BIPV MANUFACTURER



**M405-L3H**  
**M405-I3H**

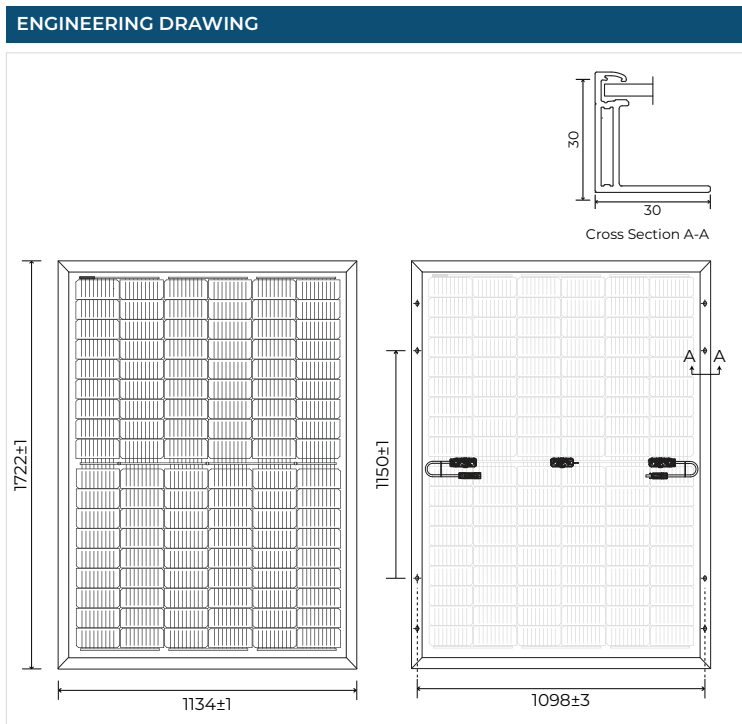


ELECTRICAL SPECIFICATIONS	SOLAR PANEL M405-L3H / M405-I3H	I-V CURVES
<b>Test Conditions</b>	<b>STC</b>	 
Module Power (Pmax)	405W	
Maximum Power Voltage (Vpmax)	31.11V	
Maximum Power Current (Ipmax)	13.02A	
Open Circuit Voltage (Voc)	37.55V	
Short Circuit Current (Isc)	13.73A	
Module Efficiency	21%	
Maximum System Voltage (VDC)	1500V (IEC/UL)	
Series Fuse Rating	25A	
Power & Other Electrical Specification Tolerance	5%	
Application Classification	Class A	
Measurement Conditions: STC 1000 W/m² - AM 1.5 - Temperature 25°C		

MECHANICAL PROPERTIES	METRIC	IMPERIAL
Module Weight	20.5 ± 1 kg	45.2 ± 2.2 lbs
Dimensions (H x L x D)	1722 x 1134 x 30mm	67.8 x 44.6 x 1.2in
Mechanical Test Load (Wind / Snow)	5400Pa rear load / 5400Pa front load	112.8psf rear load / 112.8psf front load
Hail Impact Resistance	Ø 25mm at 83 km/h	Ø 1in at 51.6 mph
Cells	108 [(6x9)x2] Mono-crystalline half cell (182 x 182mm)	108 [(6x9)x2] Mono-crystalline (7.16 x 7.16in)
Glass	3.2mm tempered glass, high transmittance, anti-reflective coating	0.126in tempered glass, high transmittance, anti-reflective coating
Cables & Connectors (Refer to Installation Manual)	1200mm - 4mm², 12 AWG (UL) MC4	47.24in - 0.16 in², 12 AWG (UL) MC4
Backsheet	High durability, UV resistant, PV backsheet	
Frame	Anodized aluminum alloy black frame	
Bypass Diodes	3 diodes	
Junction Box	IP68 rated, TUV and UL certified	
Fire Rating	Type I	

TEMPERATURE RATINGS	
Temperature Coefficient Isc	0.054% /°C
Temperature Coefficient Voc	-0.262% /°C
Temperature Coefficient Pmax	-0.341% /°C
Nominal Module Operating Temperature	42.5 ± 2°C
Operating Temperature	-40°C ~ +85°C

SHIPPING	
Modules Per Pallet	37
Pallets Per Truck	26
Modules Per Truck	962



**WARRANTY**

Product Warranty: 25 years  
Performance Warranty:

- ≥ 97.5% end of 1st year
- ≥ 92% end of 12th year
- ≥ 86% end of 25th year

**CERTIFICATIONS**

UL 61730-1/-2, UL 61215-1/-2, CEC Listed

- Datasheet is subjected to change without prior notice, always obtain the most recent version of the datasheet.
- Caution: For professional use only, the installation, handling, and cleaning of PV modules should only be performed by qualified professionals. Read the Installation Manual for mounting specifications before handling, installing and operating modules.

Learn More: [mitrex.com](http://mitrex.com) | [info@mitrex.com](mailto:info@mitrex.com)

Headquarters: 41 Racine Rd., Toronto, ON M9W 2Z4, Canada | +1 (855) 254 0214 (Toll Free)

West USA Location: 10880 Wilshire Blvd Suite 1101, Los Angeles, CA 90024, USA | +1 (323) 301 7978









East USA Location: 1 Rockefeller Plaza Fl 11, New York, NY 10020, USA | +1 (646) 583 4486



**04** **WARRANTY**



# BEAUTIFUL ROOF BEAUTIFUL HOMES SOLAR ENERGY PRODUCTION

-  Beautiful Aesthetics that Last a Lifetime
-  World Safest Solar Panel
-  Made In North America
-  One Click Warranty
-  Exclusive Distribution
-  Superior Quality
-  Scratch Free / Fade Free
-  Everlasting Designs that Blend with your Roof Materials



**HAVE THE MOST BEAUTIFUL HOUSE IN THE NEIGHBOURHOOD  
WITH MITREX COLORED SOLAR PANELS**



---

### Learn More:


 [mitrex.com](https://mitrex.com)

 [info@mitrex.com](mailto:info@mitrex.com)

 +1 (855) 254 0214 (Toll Free)


### Headquarters:

 41 Racine Rd., Toronto,  
ON M9W 2Z4, Canada

 +1 (416) 497 7120


### West USA Office:

 10880 Wilshire Blvd Suite 1101,  
Los Angeles, CA 90024, USA

 +1 (323) 301 7978

### East USA Office:

 1 Rockefeller Plaza Fl 11,  
New York, NY 10020, USA

 +1 (646) 583 4486



FOR MORE  
INFORMATION

