

FEATURES


-  Mitrex Thermal Clip reduces thermal bridging in external rain screen assemblies and improves insulation effective-R values while allowing for flexible facade design

-  It creates a thermal break between the building's interior and exterior and minimizes thermal transfer through the building envelope.

-  The system accommodates various insulation thicknesses or wall depths without the need for shims.

-  Suitable for concrete, concrete block, steel studs, or wood substrates.

-  The Mitrex Thermal Clip is recommended for high-performance building envelopes and supports energy conservation and sustainable building practices.

-  The clip is comprised of a 14-gauge galvanized steel bracket attached to a glass fibre reinforced polyamide thermal insulator pad.



Thermally Broken Bracket

GENERAL PROPERTIES

	Test	Imperial	Metric
Density	ISO 1183	0.05 lb/in ³	1.29 g/cm ³
Water Absorption:			
· At saturation in air of 23°C / 50% R.H.	ISO 62	1.7%	
· At saturation in water 23°C	ISO 62	5.5%	

ELECTRICAL PROPERTIES

	Test	Imperial	Metric
Volume Resistivity	ISO 93	-	10 ¹² Ωcm
Dielectric Strength	ISO 243	686kV/in	27kV/mm
Dielectric Constant	ISO 250	7	
Dissipation Factor Tan Δ at 1 MHz	ISO 250	0.04	

MECHANICAL PROPERTIES

	Test	Imperial	Metric
Tensile Stress at Yield and Break	ISO 527	12,328psi	85N/mm ²
Tensile Modulus of Elasticity	ISO 527	725,188psi	5000N/mm ²
Compression Test: -1% Strain After 1,000 Hrs	ISO 899	6,236psi	43N/mm ²
Ball Indentation Hardness	ISO 2039	23,931psi	165N/mm ²
Charpy Impact Strength - Unnotched	ISO 179-1/1eA	2.38 10 ⁷ ftlb/in ²	50kJ/mm ²
Charpy Impact Strength - Notched	ISO 179-1/1eU	2.85 10 ⁶ ftlb/in ²	6 kJ/mm ²
Shore Hardness	ISO 2039	76 D	
Coefficient of Friction to Steel	ISO 8295	-	
Elongation at Break	ISO 527	0%	



THERMAL PROPERTIES

	Test	Imperial	Metric
Melting Temperature	ISO 3156	500°F	260°C
Deformation Temperature	ISO 75	302°F	150°C
Max. Allowable Service Temperature In Air			
Continuously	-	248°F	120°C
Short Periods	-	68°F	20°C
Minimum Service Temperature	-	-68°F	-20°C
Thermal Conductivity at 23°C	ISO 22007.2	-	0.3W/9km
Flamability			
Oxygen Index	ISO 4589	-	0%
According to UL94 (3/6 Thickness)	UL94	-	HB
Coefficient of Linear Thermal Expansion: Average Value between 23°C and 60°C	ISO 11359	-	50X10 ⁻⁶ m(m.K)


Learn More:

-  mitrex.com
-  cladify.com
-  info@mitrex.com
-  info@cladify.com

Headquarters:

-  41 Racine Rd., Toronto, ON M9W 2Z4, Canada
-  +1 (855) 254 0214 (Toll Free)

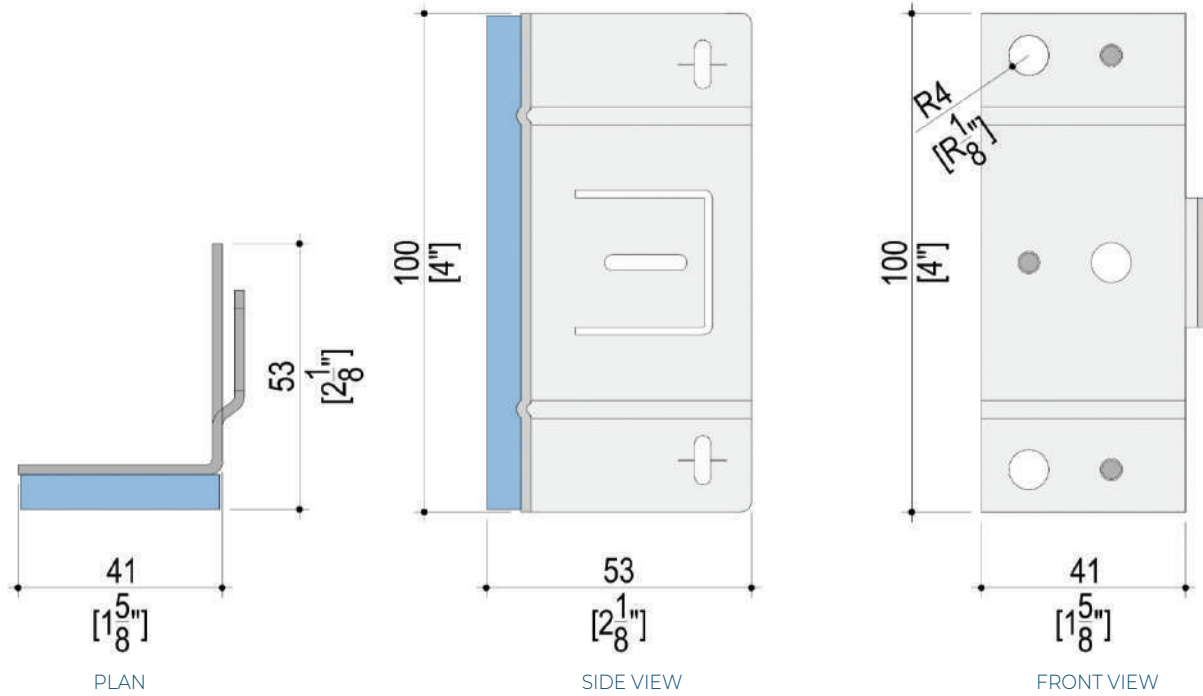
West USA Location:

-  10880 Wilshire Blvd Suite 1101, Los Angeles, CA 90024, USA
-  +1 (323) 301 7978

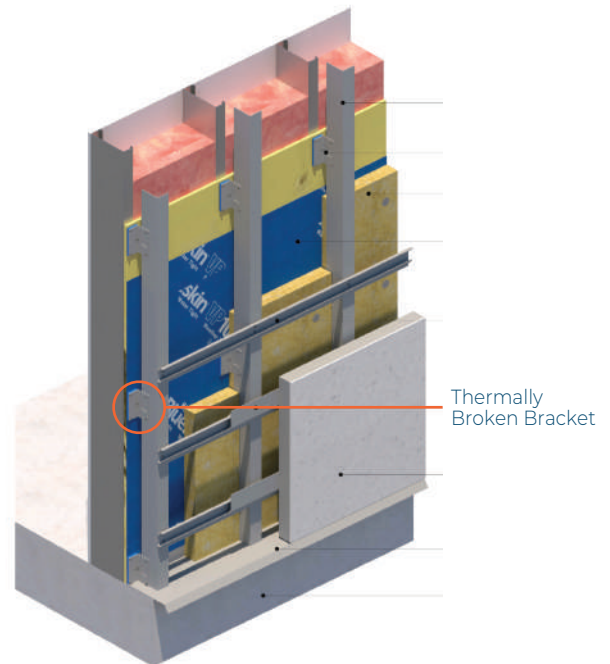
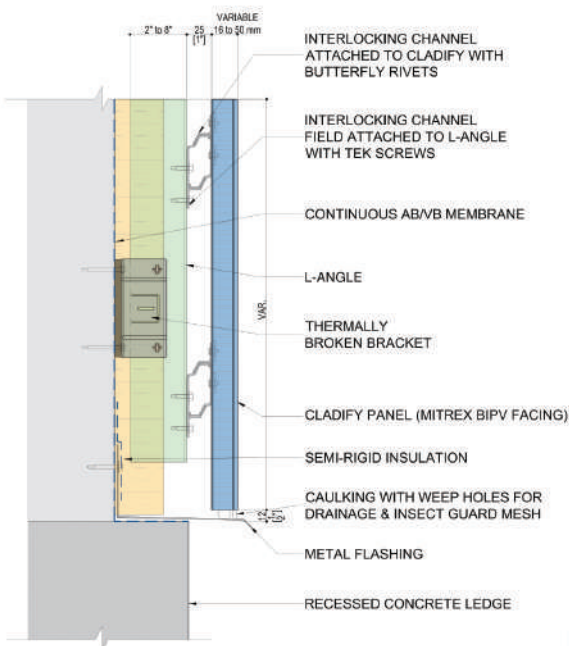
East USA Location:

-  1 Rockefeller Plaza Fl 10 & 11, New York, NY 10020, USA
-  +1 (646) 583 4486

TECHNICAL DRAWING



POSITION IN THE INSTALLATION SYSTEM



Learn More:

mitrex.com

cladify.com

info@mitrex.com

info@cladify.com

Headquarters:

41 Racine Rd., Toronto, ON M9W 2Z4, Canada

+1 (855) 254 0214 (Toll Free)

West USA Location:

10880 Wilshire Blvd Suite 1101, Los Angeles, CA 90024, USA

+1 (323) 301 7978

East USA Location:

1 Rockefeller Plaza Fl 10 & 11, New York, NY 10020, USA

+1 (646) 583 4486