



Energy Generating Building Materials:
Solar Facade Product Datasheet



⚡ Solar Facade

Our range of architectural solar products, including the innovative Solar Facade, is crafted to seamlessly replace your building’s facade while harnessing the power of the sun.

With a robust aluminum honeycomb core and a layer of high-efficiency solar cells, each panel is a powerhouse of clean energy. But the magic lies in the customizable facing– a canvas where any pattern or colour comes to life, marrying the beauty of architectural solar facades with the practicality of BIPV.

- Assist you with obtaining up to 41 LEED points.
- Up to R10 per inch.
- Carbon-negative product lifecycle.
- World’s first fire-tested BIPV.
- 3rd party tested to withstand Martian environmental conditions.
- Large format panels that are lighter than water.
- ✓ Mitrex modules include a 25-year warranty for both product quality and performance, guaranteeing excellence in hardware, energy generation, and aesthetics.

Testing And Certifications

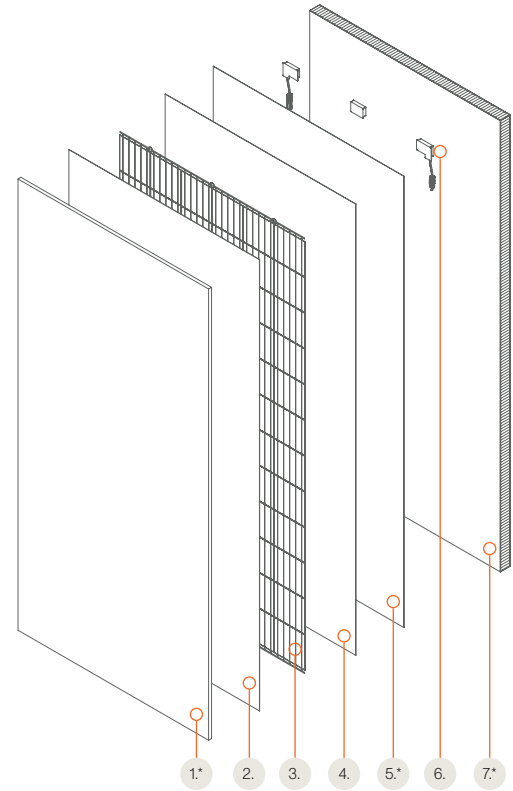


Testing:

- UL 61730-1/-2, CSA 61730-1/-2, IEC 61730-1/-2
- UL 61215-1/-2, CSA 61215-1/-2, IEC 61215-1/-2
- EN 13501-1 (A2-s1, d0)
- ANSI Z97.1

Certifications:

- NFPA 285
- CAN/ULC-S134, CAN/ULC-S135
- ASTM B117-16, ASTM C271/C271M-16, ASTM C297/C297M-16, ASTM C364/C364M-16, ASTM C365, ASTM C393/C393M-16, ASTM C480/C480M-16, ASTM C273/C273M-18, ASTM C481-99 (Reapproved 2016), ASTM C666/C666M-15, ASTM C880/C880M-15, ASTM C897-08 (2016), ASTM D1761, ASTM D7766/D7766M-16
- ISO 10545-8
- ASTM E84, ASTM E136, ASTM E119
- ASTM E283, ASTM E330, ASTM E331
- ASTM E1886, ASTM E1996
- ASTM G154
- ASTM D6578

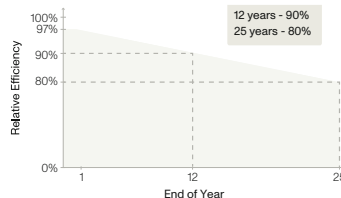


Solar Facade Module Layers

1. Glass / Customizable Facing - * See page 6, Section Solar Glass Capabilities.
2. and 4. Encapsulant
3. ⚡ Solar Cells
5. Back Sheet - *See page 6, Section Solar Backsheet Capabilities
6. Junction Box
7. Aluminum Honeycomb - * See page 5, Section Aluminum Honeycomb Capabilities

Warranty

Our products are backed by an industry-leading 25-year product and performance warranty.



Product Material Warranty: 25 years
 Performance Warranty: 25 years
 ≥ 97% end of 1st year
 ≥ 90% end of 12th year
 ≥ 80% end of 25th year

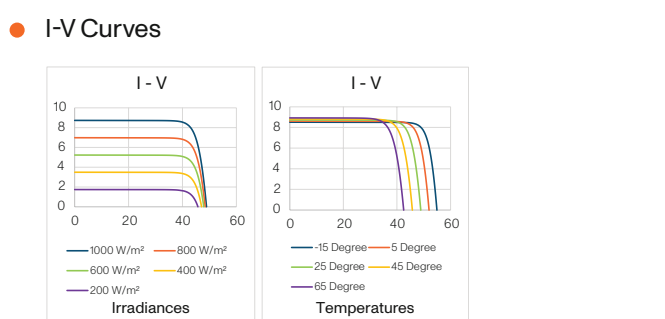
General Electrical And Mechanical Data

For Standard Module 2030×990×55mm (79.9×39.0×2.1in)

● Test	● Specification	● Engineering Drawing
Test Conditions	STC	
Module Power (Pmax)	Varies, See Page 13-15	
Maximum Power Voltage (Vpmax)	Varies, See Page 13-15	
Maximum Power Current (Ipmax)	Varies, See Page 13-15	
Open Circuit Voltage (Voc)	Varies, See Page 13-15	
Short Circuit Current (Isc)	Varies, See Page 13-15	
Module Efficiency	Varies, See Page 13-15	
Cell Efficiency	22.5% - Monocrystalline Solar Cell	
Maximum System Voltage (VDC)	1000V (IEC/UL)	
Series Fuse Rating	20A	
Power & Other Electrical Specification Tolerance	5%	
Application Classification	Class A	
Measurement Conditions: STC 1000 W/m ² - AM 1.5 - Temperature 25°C		

● Mechanical Properties	● Metric	● Imperial
Module Weight	29 kg	63.9 lbs
Dimensions (H x L x D)	2030 × 990 × 54mm	79.9 × 39.0 × 2.12in
Maximum Surface Load (Wind / Snow)	8000Pa rear load / 8000Pa front load	167.1psf rear load / 167.1psf front load
Design Load	5400Pa rear load / 5400Pa front load	112.7psf rear load / 112.7psf front load
Hail Impact Resistance	ø 25mm at 83 km/h	ø 1in at 51.6 mph
Cells	72 [12×6] Mono-crystalline (158.75 × 158.75mm)	72 [12×6] Mono-crystalline (6.25 × 6.25in)
Glass	3.2mm tempered glass, high transmittance, anti-reflective coating	0.126in tempered glass, high transmittance, anti-reflective coating
Cables & Connectors	300mm, 500mm, 1000mm, 1200mm - 4mm ² , 12 AWG (UL), MC4 from Staubli	11.8in, 19.7in, 39.4in, 47.2in - 0.16in ² , 12 AWG (UL) MC4 from Staubli
Backsheet	High durability, UV resistant, PV backsheet	
Back Support	Aluminum Honeycomb	
Bypass Diodes	3 diodes- 30SQ045T (45V max DC blocking voltage, 30A max forward rectified current)	
Junction Box	IP68 rated, TUV and UL certified	
Fire Rating	Spread of Flame A, Burning Brand C	

● Temperature Ratings	
Temperature Coefficient Isc	0.036% /°C
Temperature Coefficient Voc	-0.27% /°C
Temperature Coefficient Pmax	-0.36% /°C
Nominal Module Operating Temperature	45 ± 3°C
Operating Temperature	-40°C ~ +85°C



*Varies, These graphics are based on a 345W panel

Backing Information

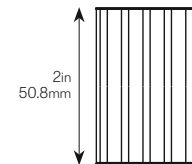
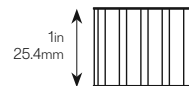
General Panel Mechanical Data

	• Size 3/4 in		• Size 1 in		• Size 2 in	
	Imperial	Metric	Imperial	Metric	Imperial	Metric
Total Thickness With Facing	0.87in	2.22mm	1.13in	28.6mm	2.13in	54.0mm
Total Weight With Facing	2.81lbs/ft ²	13.74kg/m ²	2.84lbs/ft ²	13.89kg/m ²	2.97lbs/ft ²	14.5kg/m ²

Aluminum Honeycomb General Mechanical Data

	• Size 3/4 in		• Size 1 in		• Size 2 in	
	Imperial	Metric	Imperial	Metric	Imperial	Metric
Total Thickness	3/4in	19.0mm	1in	25.4mm	2in	50.8mm
Skin Thickness	0.03in	1mm	0.03in	1mm	0.03in	1mm
Weight	0.93lb/ft ²	4.52kg/m ²	0.96lb/ft ²	4.67kg/m ²	1.08lb/ft ²	5.28kg/m ²
Flexural Rigidity	50 (10 ⁹ N psi)	0.35 (10 ⁹ N mm ²)	182 (10 ⁹ N psi)	1.26 (10 ⁹ N mm ²)	1,450 (10 ⁹ N psi)	10.08 (10 ⁹ N mm ²)
Shear Rigidity	332 (10 ⁹ N psi)	2.29 (10 ⁹ N mm ²)	332 (10 ⁹ N psi)	2.29 (10 ⁹ N mm ²)	332 (10 ⁹ N psi)	2.29 (10 ⁹ N mm ²)
Tensile Strength	117 psi	0.80 MPa	196 psi	1.35 MPa	392 psi	2.70 MPa
Compressive Strength	9,398 psi	64.8 MPa	15,664 psi	108 MPa	31,328 psi	216 MPa
Compressive Elastic Modulus	61 psi	0.42 MPa	101 psi	0.7 MPa	203 psi	1.4 MPa
Shear Strength	744 psi	5.13 MPa	1,232 psi	8.5 MPa	2,465 psi	17 MPa

Thickness Options



Aluminum Honeycomb Mechanical Data - Skin

	Imperial	Metric
Thickness	0.02 - 0.04in	0.5 - 1in
Yield Strength (R _{p,0.2})	>11,603 psi	>80 N/mm ²
Ultimate Tensile Strength (R _m)	18,129<R _m <26,831psi	125<R _m <185 N/mm ²
Elongation (A)	>3%	
Alloy Type	5005	

Aluminum Honeycomb Mechanical Data - Core

	Imperial	Metric
Thickness	1/4in	6.35mm
Yield Strength (R _{p,0.2})	0.002in	0.05mm
Ultimate Tensile Strength (R _m)	3.49lb/ft ³	56 kg/m ³
Elongation (A)	319 psi	2.2 MPa
Alloy Type	3005	

For further mechanical information about aluminum honeycomb, please check Mitrex aluminum honeycomb datasheet.

Facing Information

Solar Glass Mechanical Data

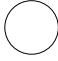

	Imperial	Metric
Thickness	0.13 ± 0.008in	3.2 ± 0.2mm
Dimensional Tolerance	± 0.04in	± 1.0mm
Density	0.09lbs/in ³	2.5gm/cm ³
Corner	Radius, Chamfer or cut (0.04-0.16in)	Radius, Chamfer or cut (1.0-4.0mm)
Overall Bow / Warp <small>(EN 12150-1:2015)</small>	0.16in / 39.37in	4.0mm/M / 990mm/M
Local Warp <small>(EN 12150-1:2015)</small>	0.002in / 11.81in	0.5mm / 300mm/M
Bending Strength <small>(EN 12150-1:2015)</small>	516.06lbs/in	90N/mm
Iron Content <small>(ASS)</small>	<120ppm	
Edge	At least seamed	
Scratch Hardness <small>(Mohs)</small>	5	
Fragmented Particles in 50x50mm <small>(If Tempered) (EN 12150-1:2015)</small>	Min 40 pcs	

Solar Glass Facing Specification

	Certification	Imperial	Metric
Density	ASTM C729	158lb/ft ³	2,530kg/m ³
Absorption By Wt.	ASTM C373	0%	0%
Compressive Strength	-	150,000psi	1,000MPa
Flexural Strength <small>(Dry)</small>	ASTM C158	8,700psi	60MPa
Modulus Rupture	ASTM C158	5,950psi	41MPa
Hardness	ASTM C730	570KHN	

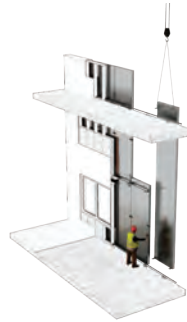
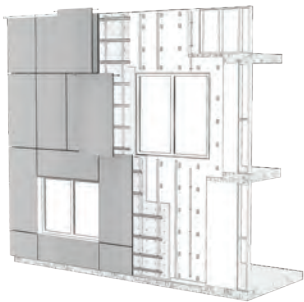
For further mechanical information about solar glass, please check Mitrex solar glass datasheet.

Solar Backsheet Capabilities

Backsheet	High durability, UV resistant, PV backsheet	
Colour	 White Backsheet	 Black Backsheet

System Information

- Cladishield System (Rainscreen System)
- Claditized System (Unitized Wall System)
- Cladifab System (Pre-fab Wall System)



Smoke And Flame Spread (ASTM E84)

	Rating
Mitrex Cladishield System (Rainscreen System)	Class B
Mitrex Claditized System (Unitized Wall System)	Class B
Mitrex Cladifab System (Pre-fab Wall System)	Class B

Sound Transmission Coefficient (ASTM E90)

	STC Rating
Mitrex Cladishield System (Rainscreen System)	34
Mitrex Claditized System (Unitized Wall System)	35
Mitrex Cladifab System (Pre-fab Wall System)	55

Color, Shape, And Size Information

Module Shapes Capabilities

Your building is a mosaic of solar facade panels, each a distinct masterpiece, with options ranging from the elegance of perfect circles to the sharp sophistication of triangles, to hexagons mirroring the precision of nature's honeycombs, and even more shapes that dare to defy convention.

• Rectangular



• Square



• Circular



• Triangular



• Hexagonal



• Parallelogram



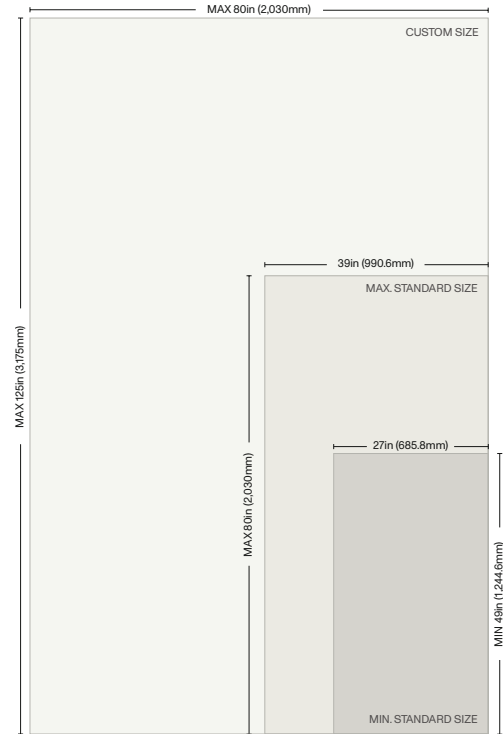
Glass Textures Options

Mitrex has a variety of glass options to give any facade, the desired finish.

- Clear Glass
- Matte Glass
- Satin Glass
- Large Grain Wood Glass
- Fine Grain Wood Glass
- Aqualine Glass
- Granite Glass

Module Size Capabilities

Mitrex offers Solar Facade panels in virtually any size. Our standard panel sizes range from 80 in by 39 in. When larger panels are needed, we also offer customized panels that can be a maximum of 125 in by 80 in.



Design and Colors

Mitrex offers architects the control and flexibility to design structures sustainably without compromising aesthetics.

- Customizable pattern, texture and colour options to satisfy any architectural needs.
- Reflective, semi-reflective or matte module depending on aesthetic requirements.
- Design flexibility, including size of panels, curves and corners.

For more information, see pages 8 to 12, section Color And Pattern Options.

Solar Solid Colors



Obsidian
⚡ 16W/SQFT



Dark Grey
⚡ 15W/SQFT



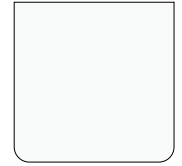
Dove Grey
⚡ 14W/SQFT



Concorde Grey
⚡ 14W/SQFT



Polaris
⚡ 8W/SQFT



White
⚡ 7W/SQFT



Ash Beige
⚡ 10W/SQFT



Khaki
⚡ 8W/SQFT



Apache
⚡ 9W/SQFT



Limunada
⚡ 8W/SQFT



Mustard
⚡ 6W/SQFT



Dark Mustard
⚡ 9W/SQFT



Dull Orange
⚡ 6W/SQFT



Fiery Orange
⚡ 8W/SQFT



Red-Orange
⚡ 9W/SQFT



Cinnabar
⚡ 10W/SQFT



Red
⚡ 12W/SQFT



Rosy Finch
⚡ 9W/SQFT



Mora
⚡ 9W/SQFT



Dark Blue
⚡ 14W/SQFT



Blue
⚡ 11W/SQFT



Flat Blue
⚡ 11W/SQFT



Morpho
⚡ 12W/SQFT



Cool Blue
⚡ 12W/SQFT



Light Blue
⚡ 12W/SQFT



Middle Grey
⚡ 14W/SQFT



Green Boulder
⚡ 11W/SQFT



Green
⚡ 10W/SQFT



Greeny Grey
⚡ 5W/SQFT



Peridot
⚡ 6W/SQFT



Turquoise
⚡ 10W/SQFT

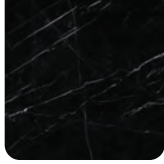


Dark Beige
⚡ 12W/SQFT

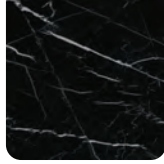
Custom Colours are available. Ask one of our representatives how to get a sample colour for your project.



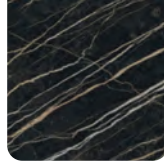
Solar Marble



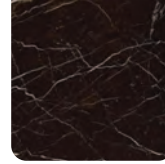
Aranea
⚡ 15W/SQFT



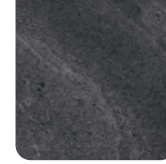
Orbit
⚡ 15W/SQFT



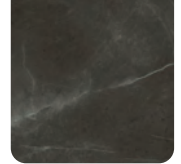
Electric
⚡ 15W/SQFT



Emperor
⚡ 14W/SQFT



Magnetic
⚡ 14W/SQFT



Scurro
⚡ 14W/SQFT



Fumo
⚡ 14W/SQFT



Hekate
⚡ 11W/SQFT



Quicksilver
⚡ 13W/SQFT



Snowfall
⚡ 12W/SQFT



Rocksalt
⚡ 11W/SQFT



Oracolo
⚡ 9W/SQFT



Nebula
⚡ 10W/SQFT



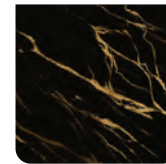
Ionian
⚡ 14W/SQFT



Aurora
⚡ 11W/SQFT



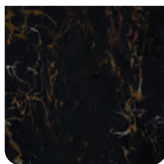
Tramonto
⚡ 14W/SQFT



Venula
⚡ 13W/SQFT



Erda
⚡ 13W/SQFT



Racine
⚡ 15W/SQFT

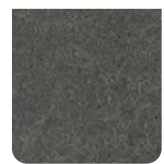
Solar Limestone



Ancona
⚡ 15W/SQFT



Elara
⚡ 15W/SQFT



Astra
⚡ 14W/SQFT



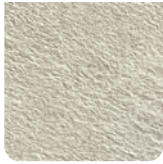
Vega
⚡ 14W/SQFT



Lupine
⚡ 14W/SQFT



Selene
⚡ 13W/SQFT



Arcturus
⚡ 12W/SQFT



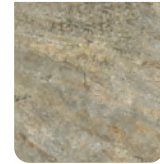
Fennec
⚡ 9W/SQFT



Ursina
⚡ 13W/SQFT



Cygnet
⚡ 15W/SQFT



Saturnian
⚡ 12W/SQFT

Solar Slate



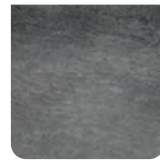
Striata
⚡ 15W/SQFT



Cerberus
⚡ 16W/SQFT



Corvus
⚡ 14W/SQFT



Orion
⚡ 13W/SQFT



Montanea
⚡ 14W/SQFT



Caldera
⚡ 14W/SQFT

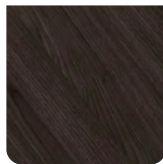
Solar Wood



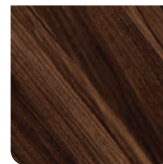
Charbon
⚡ 16W/SQFT



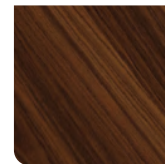
Cinis
⚡ 14W/SQFT



Terra
⚡ 14W/SQFT



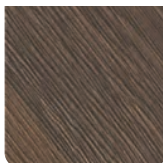
Castanea
⚡ 12W/SQFT



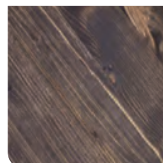
Nocciola
⚡ 12W/SQFT



Sorrel
⚡ 11W/SQFT



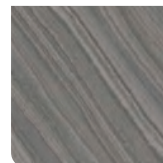
Filigrana
⚡ 13W/SQFT



Bruna
⚡ 9W/SQFT



Mandorla
⚡ 10W/SQFT

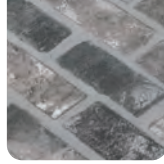


Chantilly
⚡ 13W/SQFT

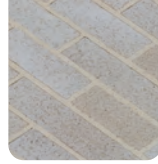
Solar Brick



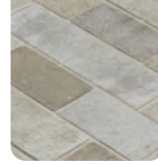
Oscuro
⚡ 15W/SQFT



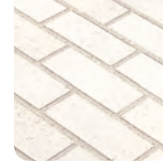
Mercurio
⚡ 10W/SQFT



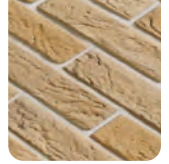
Columba
⚡ 8W/SQFT



Ardea
⚡ 9W/SQFT



Calcaria
⚡ 10W/SQFT



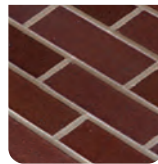
Harena
⚡ 9W/SQFT



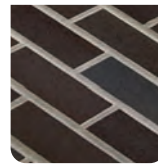
Melograno
⚡ 11W/SQFT



Maris
⚡ 14W/SQFT



Rubrica
⚡ 12W/SQFT

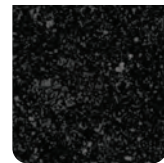


Ferra
⚡ 14W/SQFT

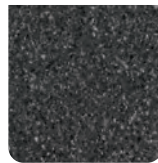
Solar Granite



Angola
⚡ 12W/SQFT



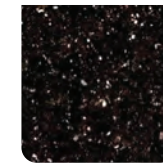
Sagittarius
⚡ 12W/SQFT



Carbo
⚡ 13W/SQFT



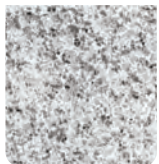
Castan
⚡ 11W/SQFT



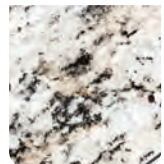
Galaxias
⚡ 12W/SQFT



Nero
⚡ 12W/SQFT



Moonstone
⚡ 10W/SQFT



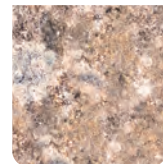
Lunula
⚡ 12W/SQFT



Purpura
⚡ 8W/SQFT



Andromeda
⚡ 7W/SQFT



Rosea
⚡ 7W/SQFT



Phoenix
⚡ 8W/SQFT

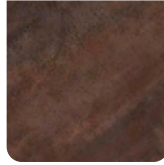
Solar Metal



Eocene
⚡ 12W/SQFT



Falco
⚡ 12W/SQFT



Cassia
⚡ 14W/SQFT



Cobaltic
⚡ 12W/SQFT

Note: The power for Mitrex Solar Modules exhibits a tolerance of +/-5%, indicating that variations in power output within this range are considered acceptable.

Colour/Power Optimization

In custom projects, Mitrex can also implement different strategies that will allow the improvement of the module power outcome depending on the projects needs.

Sample Colour Selected



Rosy Finch
⚡ 9W/SQFT

Note: Due to inconsistencies such as monitors, digital photography and production variations, we cannot guarantee that the color you see on your screen accurately portrays the true color of the product. The finished product may be slightly different than it appears in this chart. We recommend purchasing a sample first.

Before Optimization



After Optimization



⚡ 9W/SQFT

Approx. 30%

⚡ 12W/SQFT

Note: Power outcome is for a 2030x990mm module. Other module sizes will affect the output.



• University of Toronto - SAMIH



• 1451 Wellington St.



• Mayfair Manor



Electrical Data

• Model Name	• Module Power (W/SF)	• Max. Power Current - Imax (A)	• Max. Power Voltage - Vmax (V)	• Short Circuit Current - Isc (A)	• Open Circuit Current - Voc (V)	• Module Efficiency (%)
Ancona	15	7.46	42.90	8.89	49.00	16%
Andromeda	7	3.73	40.20	3.89	47.30	7%
Angola	12	6.51	41.50	6.74	48.00	13%
Apache	9	4.50	41.10	4.83	47.70	9%
Aranea	15	7.95	40.90	8.34	48.60	16%
Arcturus	12	6.26	42.30	7.36	48.40	13%
Ardea	9	4.78	39.80	5.16	47.70	9%
Ash Beige	10	5.20	40.40	5.45	47.90	10%
Astra	14	6.92	42.60	8.20	48.70	15%
Aurora	11	5.52	41.70	5.91	48.20	11%
Blue	11	6.08	40.30	6.32	48.20	12%
Bruna	9	4.59	40.30	4.80	47.80	9%
Calcaria	10	5.25	40.00	5.71	47.90	10%
Caldera	14	7.36	40.10	7.75	48.40	15%
Carbo	13	6.85	41.60	7.12	48.10	14%
Cassia	14	7.32	41.00	7.74	48.60	15%
Castan	11	5.77	42.50	6.72	48.40	12%
Castanea	12	6.17	40.50	6.52	48.30	12%
Cerberus	16	8.49	40.60	9.06	48.90	17%
Chantilly	13	6.81	40.40	7.11	48.20	14%
Charbon	15	7.95	40.90	8.41	48.70	16%
Cinis	14	7.25	40.60	7.63	48.40	15%
Cinnabar	10	5.32	40.50	5.58	48.00	11%
Cobaltic	12	6.14	40.70	6.49	48.30	12%
Columba	8	4.30	39.60	4.62	47.50	8%
Concorde Grey	14	7.59	40.20	7.90	48.50	15%
Cool Blue	12	6.31	40.40	6.58	48.30	13%
Corvus	14	7.36	40.10	7.75	48.40	15%
Cygnnet	15	7.46	42.90	8.89	49.00	16%
Dark Beige	12	6.55	40.50	6.84	48.40	13%
Dark Blue	14	7.36	40.10	7.64	48.40	15%
Dark Grey	15	8.04	40.40	8.42	48.70	16%
Dark Mustard	9	4.96	40.30	5.19	47.80	10%
Dove Grey	14	7.48	40.10	7.77	48.40	15%
Dull Orange	6	3.45	40.60	3.66	47.20	7%
Elara	15	7.46	42.90	8.89	49.00	16%
Electric	15	7.95	40.90	8.34	48.60	16%
Emperor	14	6.99	42.90	7.76	48.70	15%
Eocene	12	6.14	40.70	6.49	48.30	12%
Erda	13	6.56	42.70	7.24	48.50	14%
Falco	12	6.14	40.70	6.49	48.30	12%
Fennec	9	4.81	41.60	5.29	47.80	10%
Ferra	14	7.53	40.50	7.95	48.60	15%
Fiery Orange	8	4.16	40.90	4.44	47.50	8%
Filigrana	13	6.81	40.40	7.11	48.20	14%
Flat Blue	11	6.08	40.30	6.32	48.20	12%
Fumo	14	6.89	42.80	7.63	48.60	15%

Electrical Data

● Model Name	● Module Power (W/SF)	● Max. Power Current - Imax (A)	● Max. Power Voltage - Vmax (V)	● Short Circuit Current - Isc (A)	● Open Circuit Current - Voc (V)	● Module Efficiency (%)
Galaxias	12	6.10	42.60	7.13	48.50	13%
Green	10	5.32	40.50	5.58	48.00	11%
Green Boulder	11	5.77	40.70	6.10	48.20	12%
Greeny Grey	5	2.73	40.30	2.87	46.90	5%
Harena	9	4.78	39.80	5.16	47.70	9%
Hekate	11	5.86	41.80	6.30	48.30	12%
Ionian	14	6.99	42.90	7.76	48.70	15%
Khaki	8	4.03	40.90	4.31	47.50	8%
Light Blue	12	6.67	40.50	6.97	48.40	13%
Limunada	8	4.16	40.90	4.44	47.50	8%
Lunula	12	6.10	42.60	7.13	48.50	13%
Lupine	14	6.92	42.60	8.20	48.70	15%
Magnetic	14	6.89	42.80	7.63	48.60	15%
Mandorla	10	5.19	40.50	5.45	48.00	10%
Maris	14	7.53	40.50	7.95	48.60	15%
Melograno	11	5.72	40.20	6.25	48.10	11%
Mercurio	10	5.25	40.00	5.71	47.90	10%
Middle Grey	14	7.71	40.20	8.03	48.50	15%
Montanea	14	7.36	40.10	7.75	48.40	15%
Moonstone	10	5.38	40.90	5.71	48.00	11%
Mora	9	5.07	40.40	5.32	47.90	10%
Morpho	12	6.44	40.40	6.71	48.30	13%
Mustard	6	3.45	40.60	3.66	47.20	7%
Nebula	10	5.41	41.60	5.78	48.10	11%
Nero	12	6.51	41.50	6.74	48.00	13%
Nocciola	12	6.17	40.50	6.52	48.30	12%
Obsidian	16	8.50	40.60	8.94	48.90	17%
Oracolo	9	4.55	41.80	4.98	47.90	9%
Orbit	15	7.95	40.90	8.34	48.60	16%
Orion	13	7.00	40.00	7.35	48.30	14%
Oscuro	15	7.86	40.70	8.34	48.80	16%
Peridot	6	3.21	40.50	3.39	47.10	6%
Phoenix	8	4.21	40.40	4.41	47.50	8%
Polaris	8	4.16	40.90	4.44	47.50	8%
Purpura	8	4.21	40.40	4.41	47.50	8%
Quicksilver	13	6.46	42.60	7.11	48.40	14%
Racine	15	8.05	41.00	8.47	48.70	16%
Red	12	6.55	40.50	6.84	48.40	13%
Red Orange	9	4.62	41.10	4.96	47.70	9%
Rocksalt	11	5.74	41.80	6.17	48.30	12%
Rosea	7	3.73	40.20	3.89	47.30	7%
Rosy Finch	9	4.96	40.30	5.19	47.80	10%
Rubrica	12	6.51	40.70	6.93	48.30	13%
Sagittarius	12	6.10	42.60	7.13	48.50	13%
Saturnian	12	6.15	42.30	7.22	48.40	13%
Scurro	14	6.89	42.80	7.63	48.60	15%
Selene	13	6.81	42.60	8.06	48.70	14%
Snowfall	12	6.12	42.50	6.72	48.30	13%

Electrical Data

● Model Name	● Module Power (W/SF)	● Max. Power Current - I _{max} (A)	● Max. Power Voltage - V _{max} (V)	● Short Circuit Current - I _{sc} (A)	● Open Circuit Current - V _{oc} (V)	● Module Efficiency (%)
Sorrel	11	5.71	40.30	6.00	48.10	11%
Striata	15	8.04	40.40	8.54	48.70	16%
Terra	14	7.39	40.60	7.76	48.40	15%
Titania	15	8.04	40.40	8.54	48.70	16%
Tramonto	14	7.37	40.70	7.70	48.40	15%
Turquoise	10	5.32	40.50	5.58	48.00	11%
Ursina	13	6.58	42.50	7.78	48.60	14%
Vega	14	6.92	42.60	8.20	48.70	15%
Venula	13	6.56	42.70	7.24	48.50	14%
White	7	3.69	40.70	3.92	47.30	7%

Mitrex and Cladify Projects



- **Toll Free**

+1 (855) 254 0214

- **Learn More**

mitrex.com

info@mitrex.com

- **Headquarters**

41 Racine Rd, Toronto, ON M9W2Z4, Canada

+1 (416) 497 7120

- **USA Office**

Chrysler Building, 405 Lexington Avenue Floor 26, New York, USA, 10174

+1 (646) 583 4486