

# Task Cards

## Animal Classification

Exploring Characteristics  
of Vertebrates and  
Invertebrates



5  
Which below is an amphibian?  
a. a salamander  
b. a shark  
c. a robin  
d. a gecko

Animal Classification



7  
Which below is NOT an invertebrate?  
a. an octopus  
b. sea anemone  
c. crab  
d. shark

Animal Classification

6  
Which below is NOT a characteristic of a bird?  
a. lays eggs  
b. has feathers  
c. is cold-blooded  
d. has wings

13  
Which below is NOT a characteristic of fish?  
a. they lay eggs  
b. they have lungs  
c. they have gills  
d. they are cold-blooded

Animal Classification



Complete the analogy:  
A fish is to abass as an arthropod is to a \_\_\_\_\_

a. lobster  
b. worm  
c. starfish  
d. snail

Animal Classification

15  
Which below is NOT a fish?  
a. abass  
b. a shark  
c. a dolphin  
d. tuna



Animal Classification

16  
Which below does not belong?  
a. tapeworm  
b. earthworm  
c. leech  
d. snake



Animal Classification

## Teacher's Page

These Animal Classification Task Cards are a great way to review the vertebrate and invertebrate concepts! These cards can be used in a multitude of ways, such as through the game "Scoot," for early finishers, in small groups, as homework, in pairs, in science centers, or whole groups. Students can respond on the student sheet provided or on notebook paper. Additionally, I have included an answer key for self-checking. These cards are ready to go - just print, cut, and laminate. These cards look really great in color, but can print just as well in grayscale.

The following concepts are addressed through these task cards:

- Vertebrate Group Characteristics
- Invertebrate Group Characteristics
- Reptile Group Characteristics
- Amphibian Group Characteristics
- Bird Group Characteristics
- Mammal Group Characteristics
- Fish Group Characteristics
- Identifying Which Group An Animal Belongs In

1

Which below is a reptile?

- a. a turtle
- b. a horse
- c. an octopus
- d. a frog



## Animal Classification

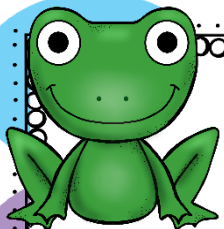
2

Which below is NOT a vertebrate?

- a. a fish
- b. a lizard
- c. a monkey
- d. a snake



## Animal Classification



## Animal Classification

What do all vertebrate animals have in common?

- a. they lay eggs
- b. they have fur
- c. they have a backbone
- d. they are warm-blooded

3



## Animal Classification

Which below are warm-blooded vertebrates?

- a. fish
- b. reptiles
- c. mammals
- d. amphibians

4



9

Which below is a characteristic of an amphibian?

- a. is warm-blooded
- b. has scales
- c. has a live birth
- d. has lungs part of their life

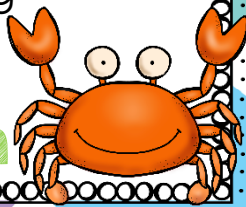


## Animal Classification

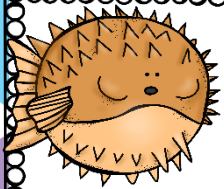
10

What characteristic do mammals have that no other group has?

- a. they have lungs
- b. they are warm-blooded
- c. they provide milk for their young



## Animal Classification



## Animal Classification

What classification is an animal without a backbone?

- a. an invertebrate
- b. a vertebrate
- c. a mammal
- d. a fossil

11

©The Owl Teacher 2015



## Animal Classification

Which below does not belong?

- a. a lizard
- b. a gecko
- c. an alligator
- d. a salamander

12

17

Most animals on Earth belong to which group?

- a. vertebrate
- b. invertebrate



Animal Classification

18

Complete the analogy:

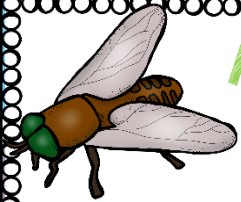
A snake is to a reptile as an earthworm is to \_\_\_\_\_.

- a. an annelid
- b. a mollusk
- c. an invertebrate
- d. an earthworm



Animal Classification

Animal Classification



Vertebrates include which type of animals?

- a. insects
- b. worms
- c. fish
- d. snails



Animal Classification

Which below does not belong?

- a. cow
- b. human
- c. mouse
- d. shark

©The Owl Teacher 2015

19

20