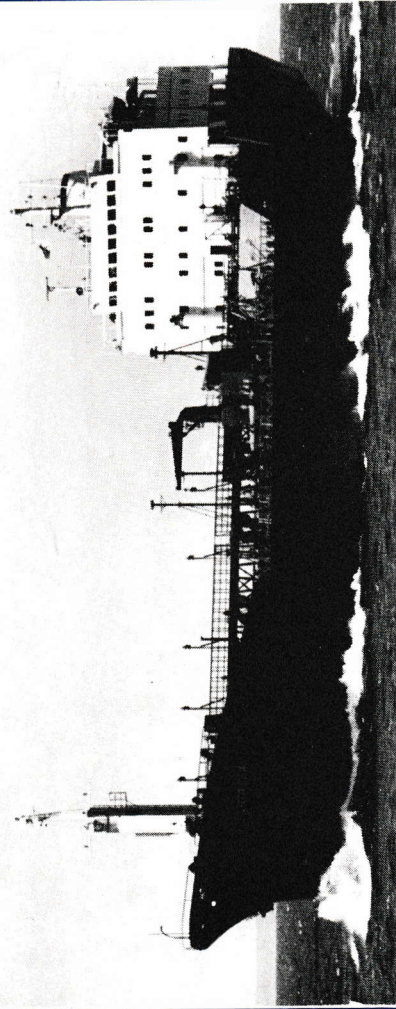




M/T JOASLA

Signal letters LCNA



OWNERS:
I/S JOARCTIC — LARS REJ JOHANSEN — OSLO

MANAGER:
Lars Rej Johansen — Oslo

Telegrams: Jship

Telex: 16268 Jship n

Telephones: 33 73 80 — 42 58 95

These particulars are believed to be correct but not guaranteed.

Description:

Built 1976 by ANKERLØKKEN VERFT GLOMMEN A/S - NORWAY.
 Class: Det norske Veritas + 1A1, Ice 1A, EO, «Tanker for Asphalt, Oil and Caustic Soda, 170°C in centre tanks». Fitted for St. Lawrence Seaways. High heat, ice-strengthened, Double bottom under all tanks.

Dimensions:

Deadweight on summer freeboard 9748 tons metr.
 Draught on summer freeboard 25,971' = 7,92 m
 Length over all 441,404' = 134,54 m
 Length between perpendiculars 417,323' = 127,20 m
 Breadth moulded 56,430' = 17,20 m
 Depth to maindeck, moulded 32,808' = 10,00 m

Tonnage:

	International	Suez	Panama
Gross	5895,52	6253,08	6337,25
Net	4015,23	4966,51	4841,84
Under deck	5174,39	5173,42	5267,23

Main engine:

One Hitachi B&W standard type 8 cyl., 2-stroke single acting, turbo charged, cross head, reversible diesel engine, type 8K42EF, with a max. continuous output of 5000 BHP at 227 r.p.m.

Auxiliary engines:

Three main generators abt. 330 kVA each. Driven by three 4-stroke, 8-cyl. diesel engines, make SKL, type 8NVD 26A2, developing 385 HP each at 720 r.p.m.

Boilers:

Two heavy fuel oil fired thermal oil boilers, make Rhein Stahl, type RHK 1500, capacity of abt. 1.500.000 kcal/hour each.

Speed:

Trial speed loaded abt.: 14,30 knots.

Fuel consumption:

Main engine (service speed) abt. 17,6 tons/24 hrs. Heavy fuel oil: 600 S.R1/100°F.
 Aux. engines, 1,5 tons/24 hrs. each. Gas oil.
 Boilers, (with max. cargo temp.) abt. 8,8 tons/24 hrs. Heavy fuel oil: 600 S.R1/100°F.

Propeller:

One right handed 4-bladet controllable pitch propeller of stainless steel, make KaMeWa.

Heating:

Heating coils in all centre tanks. Heating cap.: 170° C on cargo. Max. cargo loading temperature 170° C.

Cargo Wing Tank Coating:

Stabil Alna Packzinc Silicate.

Cargo:

All oil cargoes and bitumen up to 170° C can be carried in all centertanks. In wingtanks No. 2, 3 and 4 oil products without heating can be carried. Caustic Soda can be carried in centre tanks,

Butterworthsystem**Central Control Station:**

Central Control station and alarm system for all engine units in controlroom and on bridge. The extensive automatic control of the units permit 16 hours service without attendance. Main alarm system: Autronica KBA 5.

Nautical Equipment:

Gyro Compass: Microtecnica, type Sirius MB12.
 Log: Sagem, type Sagem-EM.
 Echo Sounding-Apparatus: Simrad, type EN 38 E.
 Radar: Kelvin Hughes, type 18/12, 2 pcs.
 Radiostation: Nera, type-CRS-3 and MS-19.
 VHF: STK, type STR-65 and type CS 205 M - 30 C.
 Radio Direction Finder: Plath type. SFP 705 LNG.
 Life Boat Radio: Nera, type SM-118 J.
 Intercommunication: Steenhans.

Fresh Water Generator:

1 Atlas type AFGU No. 3. Cap. 12 tons per 24 hours.

Deck Machinery:

Windlass: 2 electric hydraulic with mooring drums — 5 tons pull.
 Mooring Winch: 2 electric hydraulic with mooring drums — 5 tons pull. Winches arranged for automatic tension control.
 Makers: Norwinch.
 Stores crane: electric hydraulic, type «Nor-Marine» MCV-360-2-11.
 Steering gear: electric hydraulic.
 Makers: Frydenbø, type HS 180D.