

Installing Epson L130 Ink tank Printer in Ubuntu

Visit www.madhivaliyaparamba.com

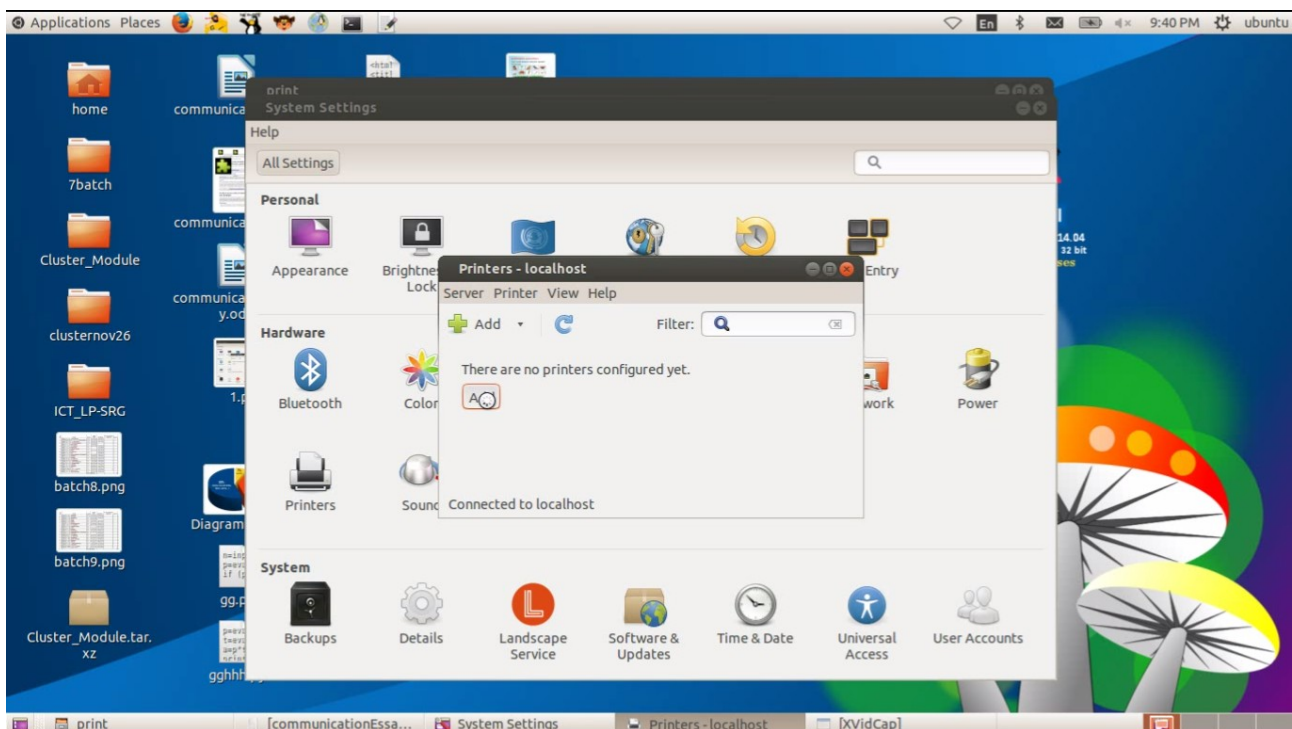
Go to the Page ict help and downloads drivers and instructions from there. Extract the files

Run install.sh

Connect the printer and power on

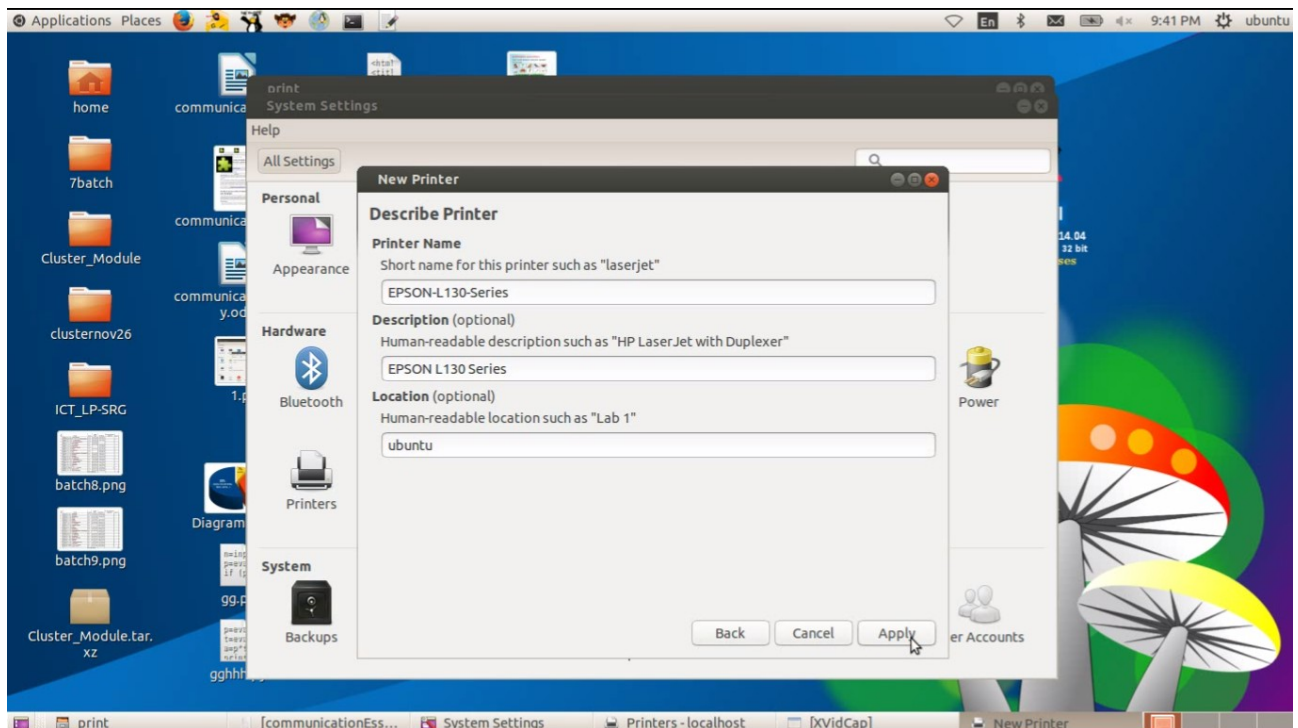
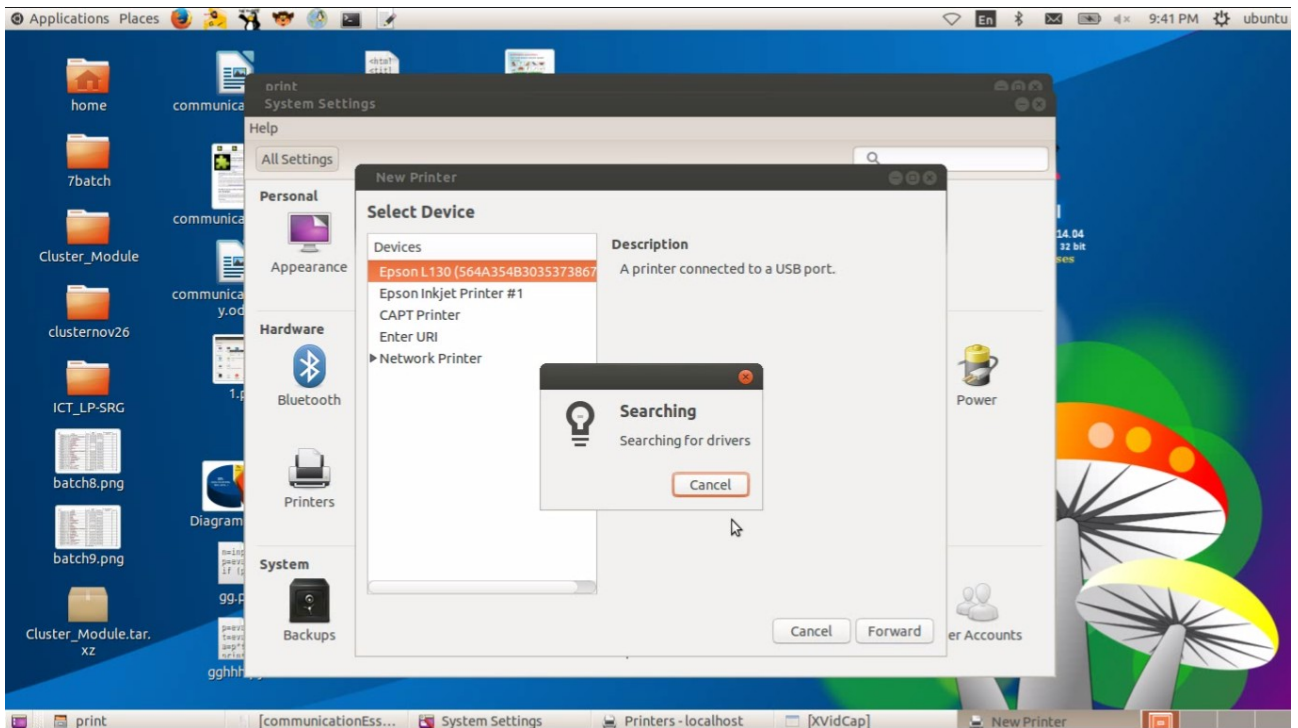
After installation go to application ---System tools---System Settings

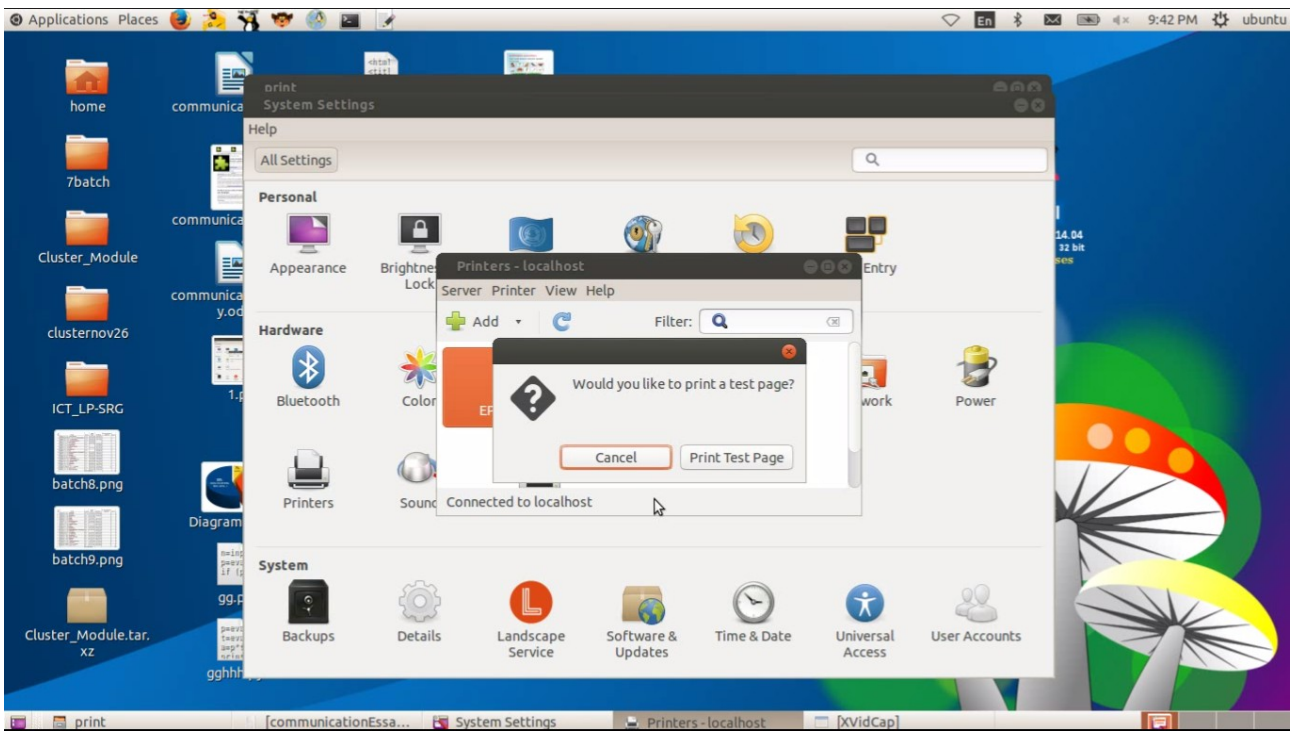
Click printers then add



Printer is automatically detected

Select the detected printer and then click forward





If the printer fails to work Remove the printer
then Add the printer and complete the steps again

P.Rajan MTC Kasaragod

Phone:8547458474