

Activity #2

Love, Splat

Move a circle over the correct answer.

How does Splat feel in the morning before he leaves for school?



How does Splat feel when he runs into Kitten on the sidewalk?



How does Splat feel when Spike yells "boo"?



How does Splat feel when he gives Kitten a card?

How does Splat feel when he reads Kitten's card?

Activity #4

Love, Splat

Highlight the true statements blue. Highlight the false statements yellow.



Splat has a pet mouse named Seymour.



Kitten finds Splat's card in the trash can.



Splat runs into Kitten in the school hallway.



Splat likes Kitten more than fish sticks and ice cream.

Activity #3

Love, Splat

Directions: Match the cause-and-effect pairs.

It was Valentine's Day	Splat was busy telling his tummy to be quiet.	Spike drew a heart around the whole playground.	Kitten likes Splat.
Splat wanted to look just right.	Splat did not see Kitten and bumped into her.	Splat thought Spike liked Kitten more.	Kitten pokes Splat's belly and bends his tail.

Activity #1

Love, Splat

Put the story events into the correct order.

- 1
- 2
- 3
- 4

	Kitten likes Splat's card better than Spike's card.
	Kitten poked Splat's belly and called him smelly.
	Splat gave Kitten a Valentine card larger than Splat's.
	Kitten gave Splat a card.

Activity #5

Love, Splat

How does Splat feel at the beginning of the story?

How does Splat feel at the end of the story?



Write a rhyme about Splat and Kitten.

Activity #6

Love, Splat

Gather supplies



Cut out your heart



Fold your card



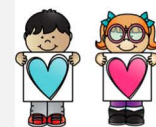
Glue heart on your card



Write your message



Exchange your Valentine



Name: _____



Glue the story events into the correct order.

1

2

3

4

5

6



Splat threw
in the trash



Splat made
Valentine



Kitten gave
that said,



Splat gave Kitten
card larger than



Kitten pulled
and called



Kitten likes

Love, Splat

Name: _____

How does Splat feel at the
beginning of the story?

How does Splat feel at the
end of the story?



Name: _____

Match the cause-and-effect pairs. Cut out the effect. Glue it underneath the cause.

It was
Valentine's
Day

Splat was
busy telling
his tummy

Splat drew
a heart
around the

Name: _____

True or False Statements

Color the true statements red. Color the false statements blue.



Splat has a pet mouse
named Seymour



Splat runs into Kitten
in the school hallway.



Splat gives Kitten a
box of chocolates.

Name: _____

Love, Splat

Circle the correct answer.

How does Splat feel in the morning
before he leaves for school?



worried



sad



happy

How does Splat feel when he
runs into Kitten on the sidewalk?



scared



nervous



proud

How does Splat feel when Spike
yells "boo" on the playground?



shy



excited



scared

How does Splat feel when Spike
gives Kitten his Valentine card?



happy



sad



angry

How does Splat feel when he
reads Kitten's Valentine card?



worried



scared



happy

