

FEED THE MUSIC MONSTER

6 SIGHT-READING ACTIVITIES



FOR PIANO LESSONS

REVIEWS BASS CLEF NOTES: CDEFG
4 CARDS PER PAGE.



Copyright © 2021 Melody Payne. All rights reserved.

REVIEWS TREBLE CLEF NOTES: F-A-C-E.
4 CARDS PER PAGE.



Copyright © 2021 Melody Payne. All rights reserved.

REVIEWS BASS CLEF NOTES: GBDFA.
4 CARDS PER PAGE.



Copyright © 2021 Melody Payne. All rights reserved.

REVIEWS BASS CLEF NOTES: A-C-E-G.
4 CARDS PER PAGE.



Copyright © 2021 Melody Payne. All rights reserved.

REVIEWS TREBLE CLEF NOTES: EGBDF.
4 CARDS PER PAGE.



Copyright © 2021 Melody Payne. All rights reserved.

REVIEWS PIANO KEYS AND FINGER NUMBERS
FOR PRE-STAFF STUDENTS. 4 CARDS PER PAGE.



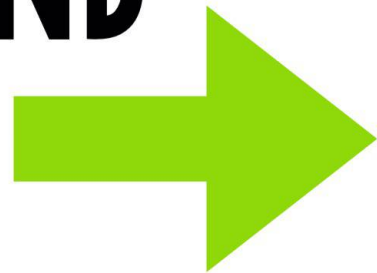
Copyright © 2021 Melody Payne. All rights reserved.

PRINTABLE SIGHT-READING AND EAR TRAINING GAMES

BUNDLE



**HERE'S AN EXAMPLE
OF WHAT THE "FEED
THE MUSIC
MONSTER" GAMES
LOOK LIKE WHEN
THEY'RE PRINTED,
CUT OUT, AND
READY TO GO.**



**CLICK HERE FOR
ASSEMBLY
INSTRUCTIONS
AND MORE
PICTURES.**



EXAMPLE GAME OPTIONS:

Game Option #1: Teacher and Student: Ear Training

1. Place the cards into the second bag (the one without the monster on it) and shake to shuffle.
2. The student draws 2 cards.
3. The teacher plays the melody on one of the cards.
4. If the student correctly chooses which melody the teacher played, the student feeds that card to the monster and puts the other card back into the shuffle bag. If the student chooses incorrectly, both cards go back into the shuffle bag.
5. Continue playing until you run out of time or all the cards have been fed to the monster.

Game Option #2: Student Only: Sight-Reading

1. Place the cards into the second bag (the one without the monster on it) and shake to shuffle.
2. The student draws a card and plays the melody.
3. If the student plays the melody correctly, the student feeds the card to the monster.
4. If the student plays the card incorrectly, the card goes back into the shuffle bag.
5. The student continues playing until all the cards have been fed to the monster, or until you run out of time.



REVIEWS BASS CLEF NOTES: CDEFG

4 CARDS PER PAGE.



MELODY PAYNE
MUSIC FOR A LIFETIME

REVIEWS TREBLE CLEF NOTES: F-A-C-E.

4 CARDS PER PAGE.



REVIEWS BASS CLEF NOTES: A-C-E-G.

4 CARDS PER PAGE.



REVIEWS TREBLE CLEF NOTES: EGBDF.

4 CARDS PER PAGE.



MELODY PAYNE
MUSIC FOR A LIFETIME

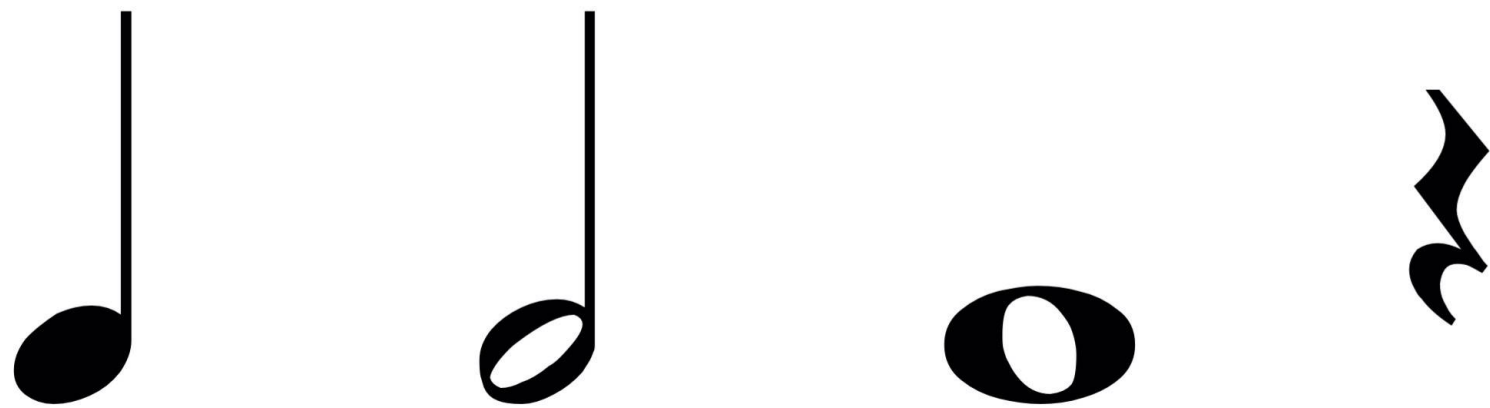
REVIEWS BASS CLEF NOTES: GBDFA.

4 CARDS PER PAGE.



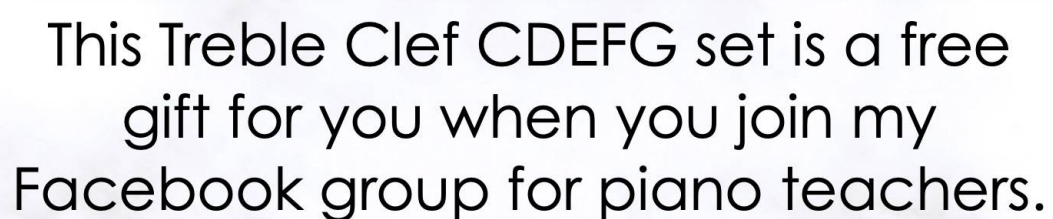
MELODY PAYNE
MUSIC FOR A LIFETIME

REVIEWS PIANO KEYS AND FINGER NUMBERS FOR PRE-STAFF STUDENTS. 4 CARDS PER PAGE.



MELODY PAYNE
MUSIC FOR A LIFETIME

A close-up photograph of a green, elongated, and slightly curved leaf, likely a palm frond, resting on a white, textured surface. The leaf is vibrant green with visible parallel veins and a smooth, glossy texture. It is positioned diagonally across the frame, with its tip pointing towards the bottom left. The background is a plain, white surface with a subtle, natural texture.



See you there!
Melody Payne



printable • sight-reading • activities