

GREATSHIP RAMYA

PLATFORM ROV/SUPPORT VESSEL



Class Notation	LRS '1+100A 1, Offshore Supply Ship, Liquid Product Tanks (SG 2.8), LOW FLASH POINT LIQUIDS , Upper Deck Aft of Fr 84 Strengthened for load of 5 tonnes/m ² , EP(A,B) +LMC, UMS, DP (AA), NAV1, CAC3, PCR, IWS Colombo Dockyard Ltd, Sri-Lanka
Place of build	Colombo Dockyard Ltd, Sri-Lanka
Year of build	Aug 2010
Flag	Singapore
IMO	9491563

Main Particulars

Design	STS 909
LOA	78.00 m
Length PP	72.00 m
Breadth Moulded	17.00 m
Depth Moulded	8.0 m
Max. Loaded Draft	6.30 m

Performance

Economic Speed	10 knots
Speed at 100% MCR	13.8 knots
FO consumption at economic speed	16.5 m ³
Type of fuel	HF HSD (Marine Gas Oil)

Capacities

Deadweight	3700 tons at 6.3 m draft
Net Tonnage	967
Gross Tonnage	3226
Deck Cargo	1200 tons
Cargo Deck Dimensions	51.3 m x 14.2 m
Deck Area	725 m ²
Deck Strength	5 t/ m ²
Dry Bulk Capacities	308 m ³ in 4 Tanks (2 Grades)
Potable/Fresh Water	761 m ³
Drill Water/Ballast Water	913 m ³ (including Roll Reduction Tanks)
Liquid Mud	988 m ³
Brine	790 m ³ (combination tanks)
Base Oil	396.6 m ³ (combination tanks)
Fuel Oil	1304 m ³ (combination tanks)
Methanol	140 m ³
Roll Reduction Tanks	2
Foam Tank	25 m ³

Freezer Room	13.44 m ³
Cooler Room	17.03 m ³
Fresh Water Generator	25 tons/day

Deck Equipment

Capstans	2 x 8 tons @ 0 ~ 15m/min.
Tugger Winches	2 x 10 tons @ 0 ~ 15m/min.
Deck Crane	1 x 3 tons @ 10 m - 16 m

Additional Features

FRC with LARS	Provided
Moonpool (Prepared)	4.8 m X 4.8 m
Fire Fighting (option)	FiFi 1
Offshore Crane (option)	50 tons

Discharge

Dry Bulk	2 x 25 m ³ / min at 5.6 bar
Fresh Water	2 x 100 m ³ / hr at 9 bar
Ballast / Drill water	2 x 100 m ³ / hr at 9 bar
Liquid Mud / Brine	3 x 75 m ³ / hr at 9 bar
Base Oil	1 x 90 m ³ / hr at 9 bar
Fuel Oil	2 x 100 m ³ / hr at 9 bar
Methanol	2 x 75 m ³ / hr at 9 bar
Tank Cleaning	Suitable for mud tanks

Propulsion and Machinery

Main Engines: KW	2 X 2320 kW, Total 4640 kW
Propellers	2 x CPP

Thruster

Bow 1	1 x 900 kW, Tunnel
Bow 2	1 x 900 kW, Tunnel
Stern 1	1 x 400 kW, Tunnel
Stern 2	1 x 400 kW, Tunnel

Auxiliary Engines

Shaft Generators	2 x 1600 kW
Diesel Generator	2 x 460 kW
Emergency Generators	1 x 90 kW
Supply System - Voltage	440 V, 60 Hz, 3 Phase

Accommodation

For Officers and Crew	16
1 Man Cabins	4
2 Man Cabin	6
For Passengers	34
1 Man Cabins	2
2 Man Cabin	16
Hospital	2 Bed
Total Accommodation	50 Berths, Fully Air-conditioned
Office	2 nos, Charterers and ROV

Anchoring Equipment

Windlass	1 x Anchor/Mooring Winch
Anchor	2 x 1700 Kgs, High Holding Stockless
Chain Cables	330m x 42mm (dia) on each side

ROV Support

Removable Bulwarks	Suitable for rescue operations P&S
Store/Work-shop	On Main deck, aft of acco. area
Deck Sockets	1 x 440 V, 2 x 220 V, 1 x 24 V DC
ROV Plug-in	All wiring connections from deck

Regulatory Compliance

SPS Code 2008	Yes
Sewage Treatment Plant	Suitable for 50 persons

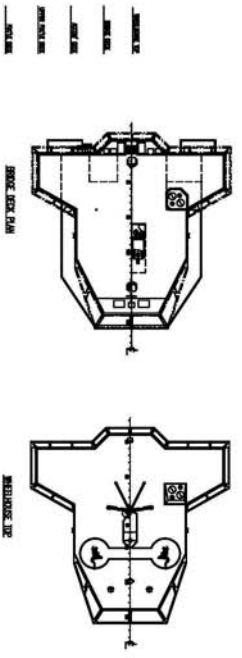
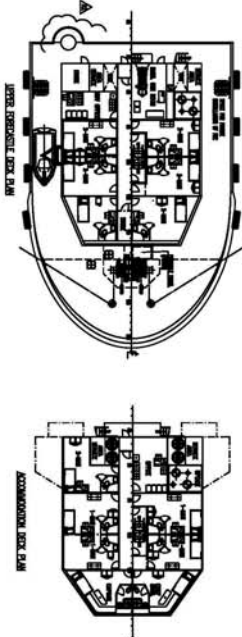
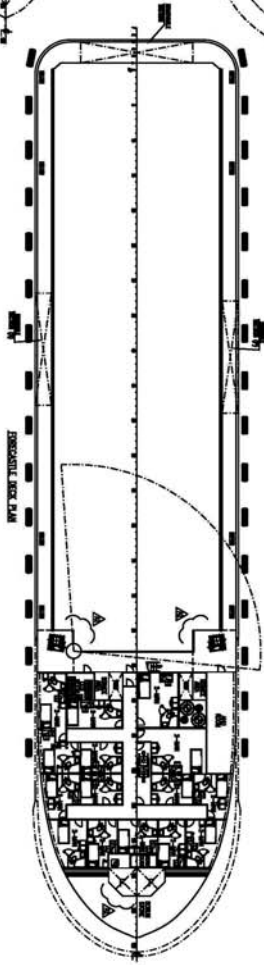
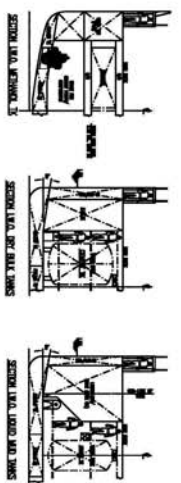
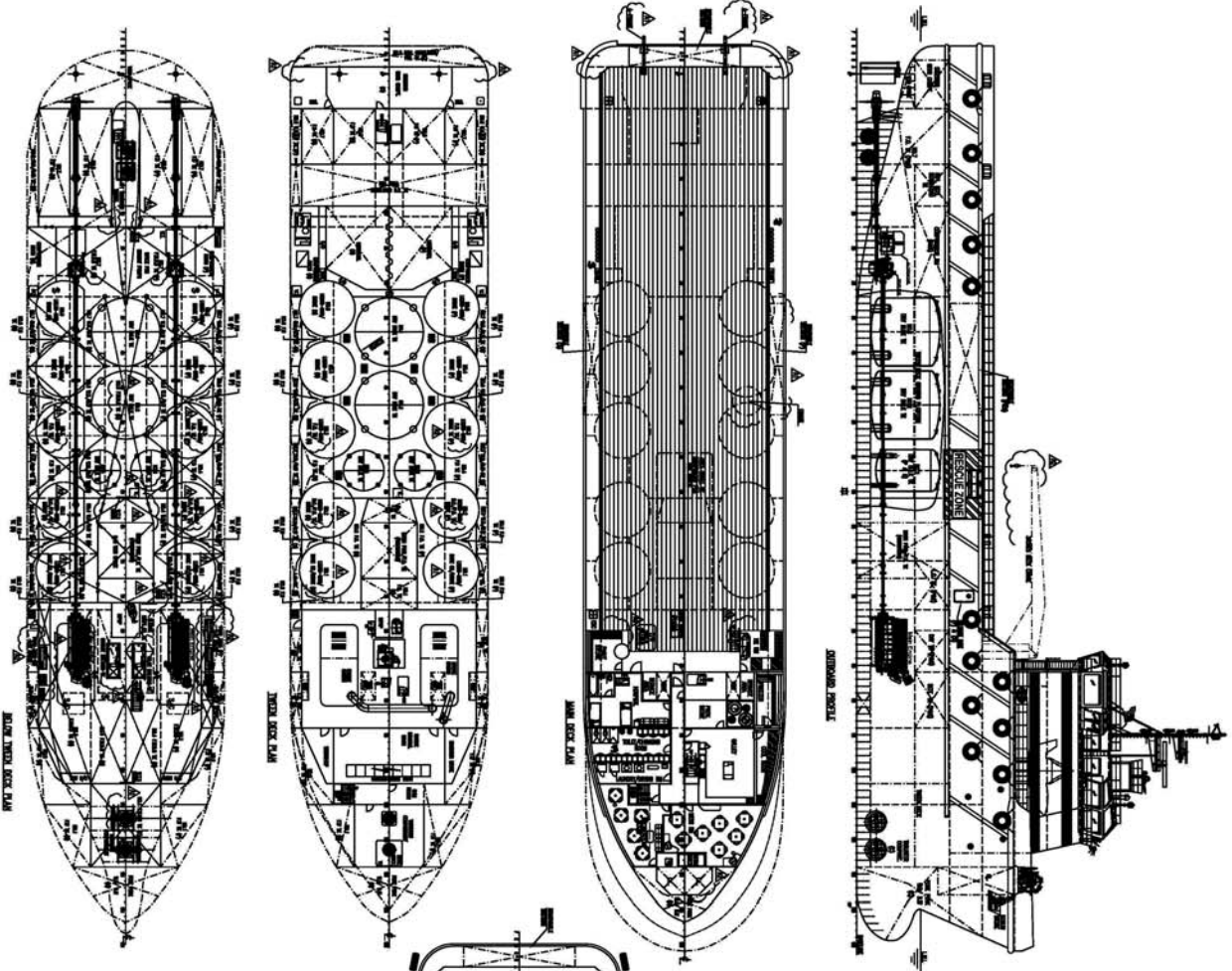
The vessel specifications are subject to modifications and may change without prior notice.

Greatship Global Offshore Services Pte. Ltd.

15 Hoe Chiang Road, Tower Fifteen # 06-03, Singapore, 089316

Phone: +65 65765600 Fax: +65 62239059

For marketing enquiries: marketing@greatshipglobal.com



GENERAL ARRANGEMENT	
SHIP NO.	1280
SHIP NAME	GREATSHIP RAMYA
SHIP TYPE	OFFSHORE SUPPLY SHIP
SHIP CLASS	RAMYA CLASS
SHIP LENGTH	128.00 M
SHIP BREADTH	20.00 M
SHIP DRAUGHT	10.00 M
SHIP WEIGHT	1500 TONS
SHIP SPEED	15 KNOTS
SHIP RANGE	10000 NM
SHIP COST	10000000 USD
SHIP DELIVERY	2015
SHIP OPERATOR	RAMYA OPERATOR
SHIP MANAGER	RAMYA MANAGER
SHIP SUPERVISOR	RAMYA SUPERVISOR
SHIP DESIGNER	RAMYA DESIGNER
SHIP CONTRACTOR	RAMYA CONTRACTOR
SHIP VENDOR	RAMYA VENDOR
SHIP MAINTENANCE	RAMYA MAINTENANCE
SHIP REPAIRS	RAMYA REPAIRS
SHIP OVERHAULS	RAMYA OVERHAULS
SHIP MODIFICATIONS	RAMYA MODIFICATIONS
SHIP UPGRADES	RAMYA UPGRADES
SHIP REPAIRS	RAMYA REPAIRS
SHIP OVERHAULS	RAMYA OVERHAULS
SHIP MODIFICATIONS	RAMYA MODIFICATIONS
SHIP UPGRADES	RAMYA UPGRADES

DATE: 15/08/2014
 DRAWN BY: AHS
 CHECKED BY: AHS
 PROJECT NO.: 1280
 PRODUCT NO.: 1280
 LAYOUT NO.: 1280
 SHEET NO.: 1280-01

NO.	REVISION	DATE	BY	CHKD.
1	ISSUED FOR CONSTRUCTION	15/08/2014	AHS	AHS
2	ISSUED FOR CONSTRUCTION	15/08/2014	AHS	AHS
3	ISSUED FOR CONSTRUCTION	15/08/2014	AHS	AHS
4	ISSUED FOR CONSTRUCTION	15/08/2014	AHS	AHS
5	ISSUED FOR CONSTRUCTION	15/08/2014	AHS	AHS
6	ISSUED FOR CONSTRUCTION	15/08/2014	AHS	AHS
7	ISSUED FOR CONSTRUCTION	15/08/2014	AHS	AHS
8	ISSUED FOR CONSTRUCTION	15/08/2014	AHS	AHS
9	ISSUED FOR CONSTRUCTION	15/08/2014	AHS	AHS
10	ISSUED FOR CONSTRUCTION	15/08/2014	AHS	AHS

GENERAL ARRANGEMENT

78M LOA MIPSV

SatTech Solutions International (S) Pte Ltd

Greatship Global Offshore Services Pte. Ltd.

215-218