

# KNOWLEDGELAKE CAPTURE SERVER

## Batch SharePoint Scanning for Network Capture Devices

Want to add powerful server based batch management capabilities to KnowledgeLake Connect and KnowledgeLake Capture? With KnowledgeLake Capture Server, it's easy to scan and save documents to Microsoft® SharePoint® using office copiers, multi-function devices, fax servers and network scanners. What's more, a server based process path enables flexible document manipulation such as web based indexing, OCR and document conversion prior to release to SharePoint.

You can centrally administer and monitor office scanning using a decentralized scanning function with a zero-touch install in branch offices. Client applications are immediately freed for additional capture activities while the server processes released documents. This makes KnowledgeLake Capture Server a powerful yet cost effective way to add SharePoint scanning capability to any network capture device.

**KnowledgeLake has created a document imaging solution that enhances the role of Office SharePoint Server as the information management platform in the enterprise.**

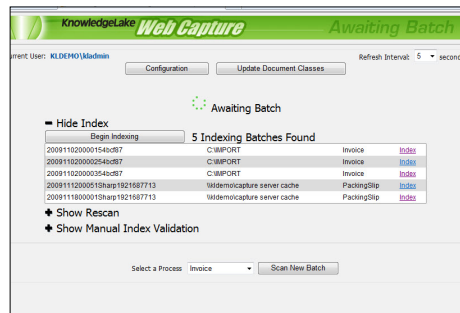
**Kirk Koenigsbauer**  
General Manager  
Microsoft Business Division

## KEY FEATURES

### BATCH PROCESSING

Use a powerful batch management service that frees client applications for additional capture while the server processes released documents.

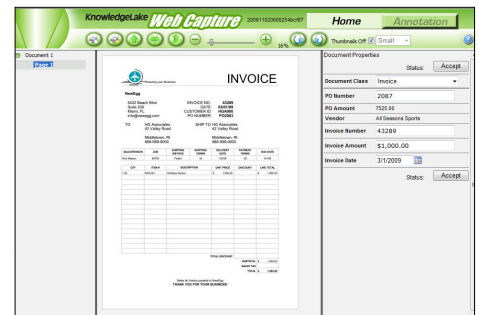
- Support for releasing to Windows SharePoint Services 3.0 and Microsoft Office SharePoint Server 2007
- Support for scripting of server-side batch processing workflows for tasks like OCR, image processing and document rendering
- Image processing for image clean-up and barcode recognition
- Batch splitter step that allows new batches to be created when different
- Document Classes are found within the same batch
- XPS/PDF Converter that creates XPS or PDF files from TIFF files
- KnowledgeLake Index for simple configuration of SharePoint column data, automated index validation and database lookups for column filling
- Ability for batch steps to be completed manually, typically by another application
- Fully documented Software Development Kit (SDK) for easy customization



## DOCUMENT IMPORT

Create batches from multi-function devices, fax servers and any other interface.

- Batch import plug-in for comma delimited files, so that indexing information in CSV files is automatically included when batches are created
- Batch import plug-in for watching network directories, enabling any capture device to save image files to a shared network folder
- Support for custom plug-ins
- Schedule imports



## WEB INDEXING

Index document batches from any PC with a Web connection.

- Browser based application to add column data before saving to SharePoint that does not require Active X, Java or Flash
- Priority indexing of batches
- Ability to specify which users can view scanned documents and apply column data directly from their browsers
- Ability to easily initiate SharePoint workflow processes without waiting for Microsoft SharePoint Server 2010

## SYSTEM REQUIREMENTS

### OPERATING SYSTEM SOFTWARE

- Microsoft Windows XP or Vista
- Microsoft Windows Server 2003 or 2008 (32-bit or 64-bit)
- Internet Information Services 6.0 or 7.0 (For Web Capture, Web Monitor and Web Service)
- .NET Framework 3.0 with Service Pack 1
- Microsoft SQL Server 2005 or Microsoft SQL Server 2008

### OPERATING SYSTEM HARDWARE

- 2.5 gigahertz (GHz) processor or higher
- 1 gigabyte (GB) RAM minimum, 2 GB recommended
- 500 megabyte (MB) hard disk space for installation files
- Additional hard disk space large enough for batch creation and document storage

### ADDITIONAL REQUIREMENTS

- Internet Explorer 6.0 or 7.0 for Web Capture and Web Monitor (Client Side)  
Microsoft Windows SharePoint Services 2.0 or Microsoft Windows SharePoint Portal Server 2003 (SPS)  
or
- Microsoft Windows SharePoint Services 3.0 or Microsoft Office SharePoint Server 2007 (MOSS)  
or  
KnowledgeLake Imaging for SharePoint v2.x

## The KnowledgeLake Family of Imaging and Capture Products

From the desktop to the enterprise, KnowledgeLake products help you maximize your SharePoint investment by speeding up how quickly you achieve ROI, lowering the total cost of ownership and increasing productivity for a complete enterprise content management solution.

### TECHNICAL HIGHLIGHTS

- Server-based processing that frees up the scan station during resource-intensive processing
- Flexible means of incorporating custom integration with line-of-business applications
- Multi-function device
  - collaboration
- Ability to expose extensible web service to interact with various
  - client resources

### KNOWLEDGELAKE IMAGING FOR SHAREPOINT

*Scalable document imaging built on Microsoft SharePoint*

### KNOWLEDGELAKE CAPTURE SUITE

*Complete document capture system for Microsoft SharePoint.*

- **KnowledgeLake Capture**  
Batch scanning and indexing for SharePoint
- **KnowledgeLake Connect**  
SharePoint integration for any desktop application
- **KnowledgeLake Capture Server**  
Batch capture processing, management and scanning/indexing for network capture devices
- **KnowledgeLake Branch Capture Server**  
Timely, efficient release of remote documents

### About KnowledgeLake

KnowledgeLake, Inc. develops document imaging, document capture, and workflow products and solutions for Microsoft SharePoint. KnowledgeLake extends the Enterprise Content Management (ECM) capabilities of SharePoint, enabling businesses to reduce mailing costs, streamline operations, and achieve regulatory compliance using familiar Microsoft products that most businesses already own and use.

Microsoft® Partner Awards  
**2009 Partner of the Year**

**KnowledgeLake, Inc.**  
**Microsoft Building**  
**3 City Place Dr. Suite 700**  
**St. Louis, MO 63141**  
**Toll-free: 888-898-0555**  
**Direct: 314-898-0500**  
**E-mail: [info@knowledgelake.com](mailto:info@knowledgelake.com)**  
**[www.knowledgelake.com](http://www.knowledgelake.com)**

To learn more about Capture Server and view a product demo, please visit:

[www.knowledgelake.com/capture](http://www.knowledgelake.com/capture)

© 2009 KnowledgeLake, Inc. All rights reserved. KnowledgeLake is a registered trademark of KnowledgeLake, Inc. Other product names may be trademarks of their respective companies.  
v 1515.2