

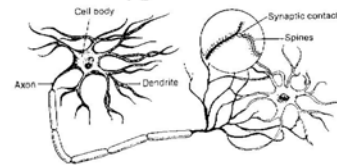
AN INTRODUCTION TO THE ELECTRO-ACUSCOPE SYSTEM

Micro-currents (μA) flow naturally through living tissue, conducting neuro-transmitters along discreet pathways through the human body and brain. This fact has been mapped and charted in various ways: the Circulatory Systems – nerves, blood, lymph, meridians – move micro-electrical currents like water traveling along rivers and streams. When obstacles and blockages restrict the forward motion of water, damming the passageways, back-ups can become stagnant pools; much like blocked energy in living tissue.



THE ACUSCOPE

When obstruction, resistance and/or abnormally high conductance are detected, the biofeedback-modulated Acuscope reads, measures, and calculates corrective square waveforms. By introducing gentle micro-currents in the same waveform shape and frequency patterns found moving through living human tissue, along the neural pathways, the effect of the Acuscope is to boost or reduce micro-electrical signals until a normal, healthy state is reestablished. In other words, by producing infinitely variable square waveforms in an alternating (polarity reversing) pattern, the Acuscope encourages nerve signals to transmit more freely, amplify and/or reduce and thereby conform (normalize) to a healthy level along the complex network of linear pathways throughout the brain and body.



IMPROVED CONDUCTIVITY

As improved conductance results, compromised tissue tends to return to an enhanced state of cellular metabolic activity (ATP production, cell-membrane ion transport, sodium-pump function, exchange of metabolites for metabolic wastes, etc. – Ngok Cheng, et al.); and as self-repair mechanisms are reactivated there is a cumulative effect over time. (Scientific documentation available upon request.)

WHY THE NAME ACUSCOPE?

The Acuscope stimulates and/or sedates, much like Acupuncture; however, of course, transcutaneously. Micro-current stimulation is applied to points along meridians and neural pathways, on and around areas of concern. It “scopes” or reads the tissue, just as a microscope or a telescope views to reveal with microscopic or long distance clarity those properties of objects being examined.

HOW ARE TREATMENTS ADMINISTERED?

A skilled operator can determine Intensity Level (strength/push of the current), and Frequency (# of repetitions of the waveform per second). These two parameters influence depth of penetration and resulting cellular activity, accelerating conductivity (reducing electrical resistance), appropriately addressing both chronic and acute conditions. The scope of The Gain Spectrum allows for individualized, precision monitoring, “attuning the instrument” to the tissue being addressed; insuring an accurately individualized treatment each and every stimulation.

A wide array of probes and electrodes provide the interface between the Acuscope and the patient, providing customized treatment applications. The digital readouts and auditory feedback allow both patient and practitioner to monitor progress objectively and determine a realistic course of therapy.

QUITE DIFFERENT FROM OTHER DEVICES

Unlike milli-amperage TENS units which are designed only to produce a temporary analgesic (Pain Gating - Melzak & Wall) effect by introducing high voltage stimulation to mask or block the pain sensation; instead micro-amperage matches cellular energy resonance levels and is intended to reestablish normal conductivity and improve cell capacitance (the capacity of a cell to hold a charge and manufacture energy on its own).

Unlike ordinary DC (Direct Current) stimulators, the polarity-reversing, push-pull effect of the Acuscope naturally and gently clears away blocked and erratic energy patterns and eliminates the transmission of pain signals to and from the brain.

The precise waveforms are configured by micro-processor chips utilizing advanced and sophisticated missile-guidance technology. No other equipment utilizes biofeedback to continuously reconfigure the most beneficial waveforms for the tissue between the two probes/electrode contact sites. By continuously calculating and readjusting, based on input (neurological bio-feedback) from the tissue between the two probes (the two electrode contact points at any given time), corrective waveforms are generated.



The digital and auditory readouts between stimulations allow the Operator to monitor the effectiveness of each and every intermittent stimulation. In addition, points of higher conductivity (relative to immediately surrounding tissue) can be located in order to produce the optimum results by boosting (amplifying) the current at precise Acu-points along the Meridians throughout the body, spinal column, face, ears, hands and feet with ideally configured micro-electrical stimulation.

THE MYOPULSE

Companion instrument to the Acuscope, the Myopulse directly addresses connective and contractile tissue (muscles, tendons, ligaments, fascia) by delivering feedback-modulated sinusoidal waveform patterns. Firing simultaneously, muscle cells emit an electrical field which is detected, measured (using refined EMG biofeedback technology), and compared to norms within programmed computer-chip circuitry. Continuous input is utilized by the micro-processors of the Myopulse to calculate corrective output in sloping micro-current waveforms (causing a shift in cellular voltage sensitive calcium ion channels).



Myopulse probes have been thoughtfully designed to apply beneficial pressure massage while delivering corrective waveforms. This instrument produces remarkably effective changes in the state of connective and contractile tissue, often releasing knots, tightness, and spasms in one treatment, improving range of

motion, reducing inflammation; and noticeably enhancing regenerative activity in weak, flaccid and chronically depleted areas over time. Hands-on palpation and patient feedback confirm these results during and following treatment sessions.

There are two versions (levels) of Myopulse: for the body, the regular instrument addresses larger muscles, muscle groups and connective tissue of the body: back, shoulders, hips, arms, legs, etc. The Facial Myopulse is calibrated to address the more delicate, superficial structures of the neck and face.

THE COMPLETE SYSTEM

Often credited as “miraculous results”, the body simply repairs itself more rapidly while receiving a series of Acuscope/Myopulse treatments. Chronic conditions often resolve where hope had previously been lost. Acute states in areas that can be addressed by no other non-chemical means can be treated successfully.



Given the boost of energy delivered in micro-currents identical to those produced by the nerves and muscles, these instruments have proven effective in helping to resolve a wide variety of conditions from whiplash to carpal tunnel syndrome, to radial neuropathy; from spasm, sprains, strains, tears in connective tissue, to soft-tissue healing surrounding fractures and breaks, (also apparently thereby indirectly accelerating the bone-mending mechanisms); from resolving plantar fasciitis to eliminating headaches and dental distress. In addition, results appear to be beneficial for addressing the gambit of stress-related issues that

are caused by and also contribute to most pain syndromes. Ideal for pre-op preparation and post-op tissue repair, the equipment has a wide variety of applications.

OFFER YOUR PATIENTS A CHOICE

The Acuscope and Myopulse are FDA approved, Class II medical devices which must be utilized by or upon referral from a licensed medical practitioner. Standard TENS insurance billing procedure codes apply. Widely used by conscientious professionals in every field including: MDs, DOs, DCs, Acupuncturists, Dentists, Podiatrists, Psychiatrists; often operated by trained technicians such as Massage Therapists, Physical Therapists, Medical and Dental Assistants.



Training and on-going support available by the Distributor, Progressive Therapy Systems Training Team, includes a firm commitment to you and your staff achieving successful results. Customized and photo illustrated for your practice, patient educational and promotional materials are available. Web-based pages are available for your practice website.

Challenge the Acuscope System with your most acute, difficult, and chronic cases and prove it for yourself. No doubt, you will be pleased; you might just be amazed! In nearly every case, the Acuscope and Myopulse will make a difference that no other electrical modality can.

Call for an in-office demonstration or a training update today. Learn more about the vast therapeutic applications of this unique, one-of-a-kind, "cutting-edge" feedback-modulated bio-energetic instrumentation.



Why wait to offer your patients enhanced relief and even better results from their visits to your office? Help those patients for whom no other modality is appropriate. They will deeply appreciate your knowledge and use of the latest in non-invasive micro-current technology, the Electro-Acuscope System, and they'll surely talk about it with everyone they know!

For a demonstration of the equipment in your Las Vegas office, contact:

Jan Rossen Dacri

jan@acuscopetraining.com

702-376-4727

On the web, visit:

www.acuscopetraining.com

To Purchase Components of the Acuscope System

Contact:

Progressive Therapy Systems, Distributor

Representing Bio-Medical Design Instruments

Since 1985

For Training and on-going support

Contact:

Jan Rossen Dacri, M.A., Acuscope Trainer since 1979

Feel free to call or write with any questions:

702-376-4727

jan@acuscopetraining.com



Jan and Ed Szeto, Massage Therapist,
at a recent training in Manhattan Beach