

SHR-2xxx SW Upgrading Process

2007.04.26

1. Targeted Models

- A. SHR-204x, SHR-208x, SHR-216x
- B. DVRs which require S/W upgrade from v2.16 to v2.18

2. Instructions on how to Upgrade S/W

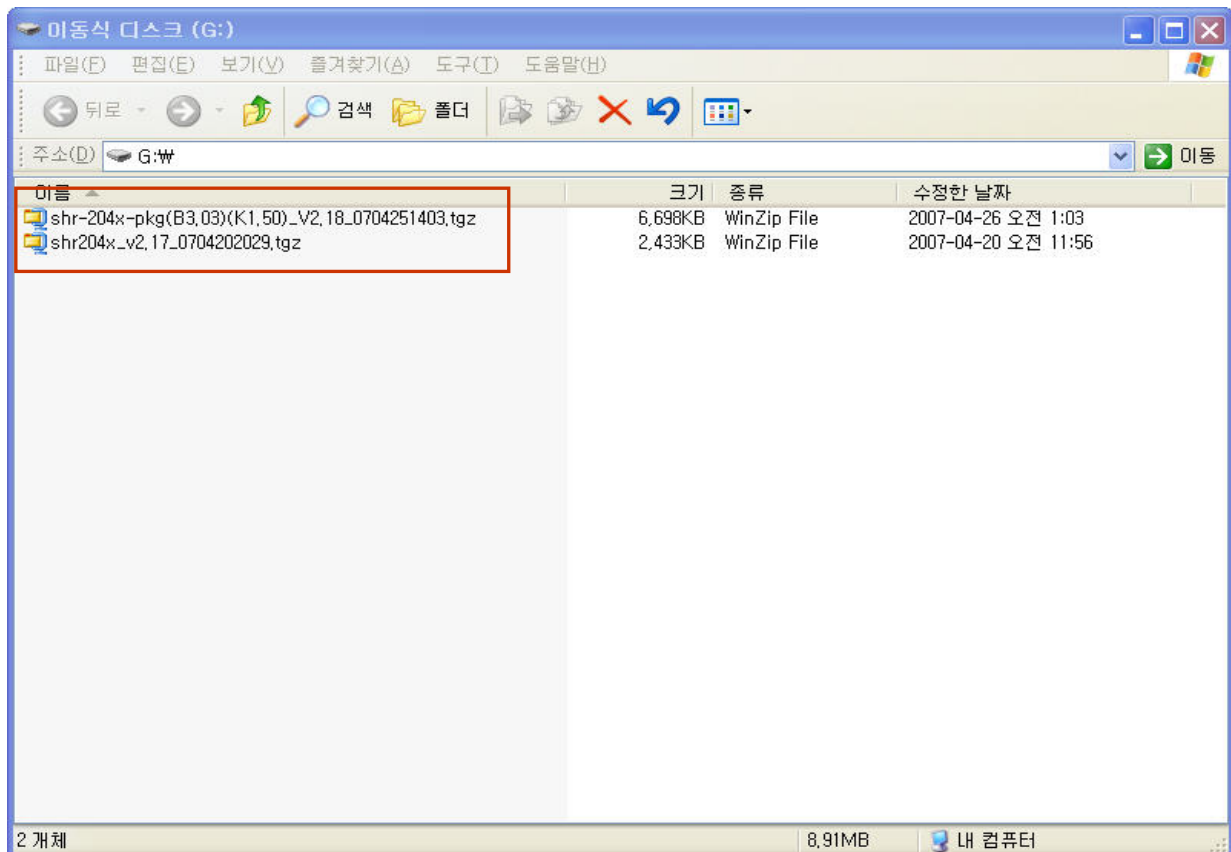
- A. In order to upgrade even the OS of the PC, upgrade needs to be done twice. There are two methods; one is to use USB Flash memory and the other is to use Smart Viewer. Each method is explained in details as follows:

B. Using USB Flash Memory

Step 1.

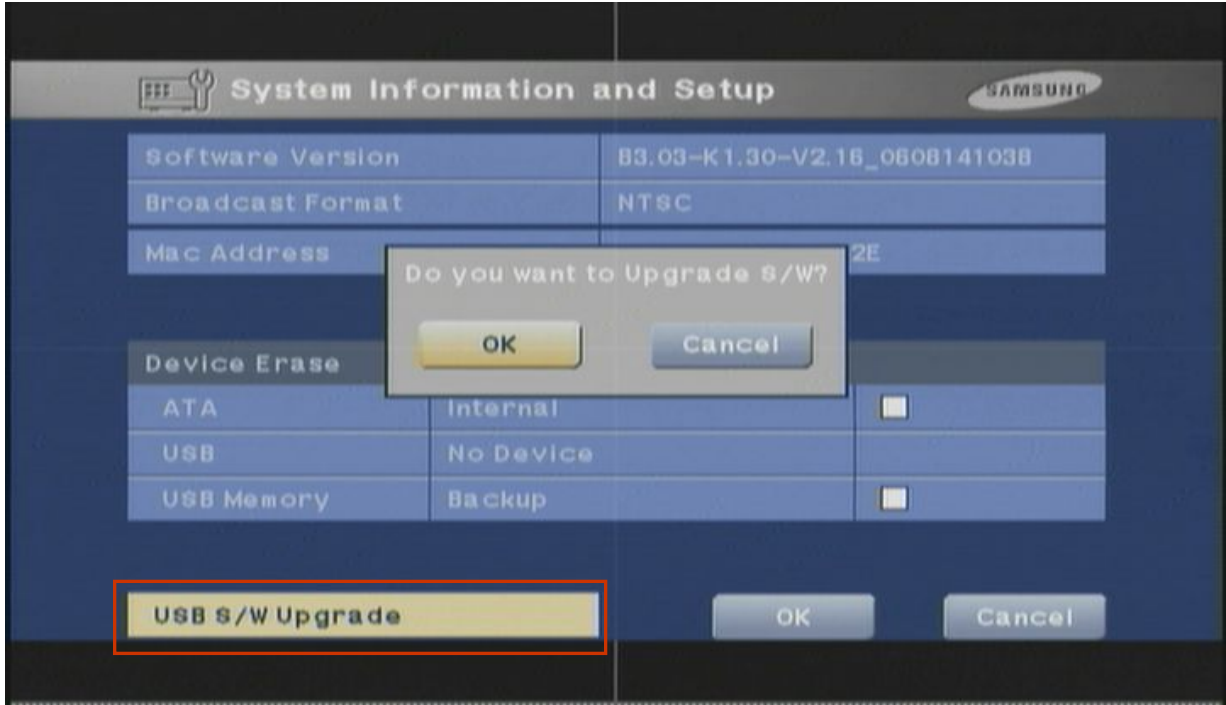
Copy two (2) upgrade files depending on different models onto the USB Flash Memory.

(One from each type: shr2xxx_v2.17_0704xxx.tgz, shr-2xxx-pkg(B3.03)-K1.50_V2.18_07xxxx.tgz)



Step. 2. (Menu Setup-> System->System-system information and setup)

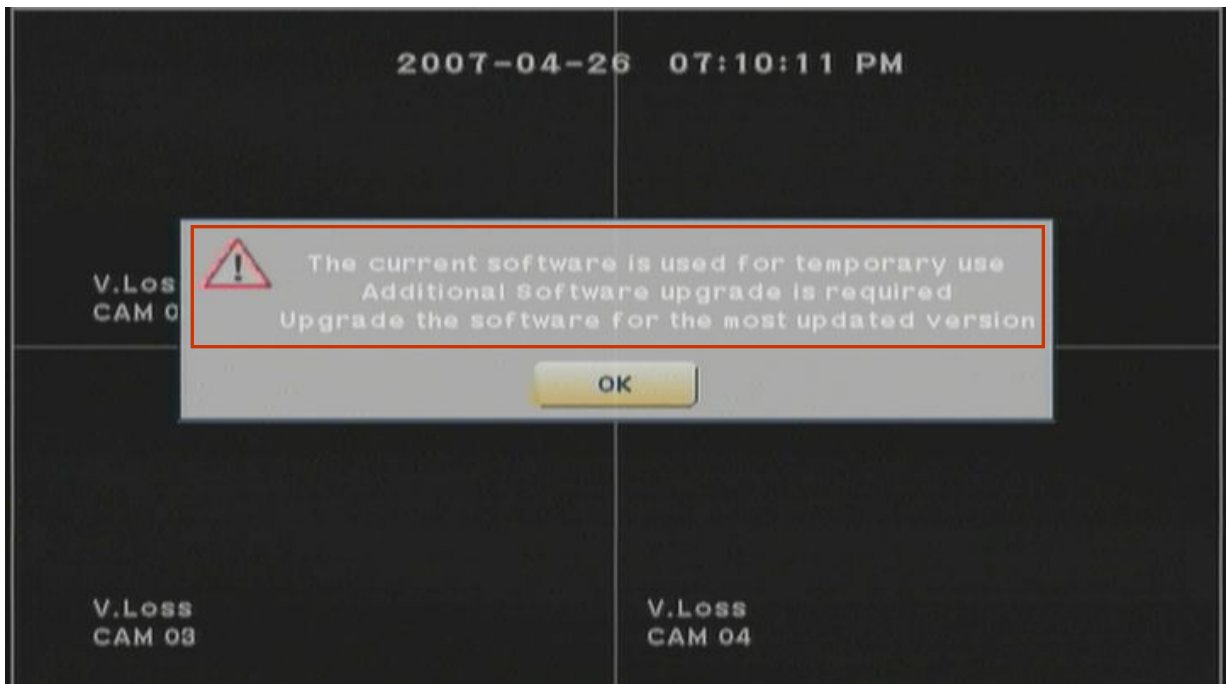
Connect the USB Flash Memory to DVR and start upgrading from system-system information and setup Menu. Be careful not to have the DVR power turned off during upgrading.



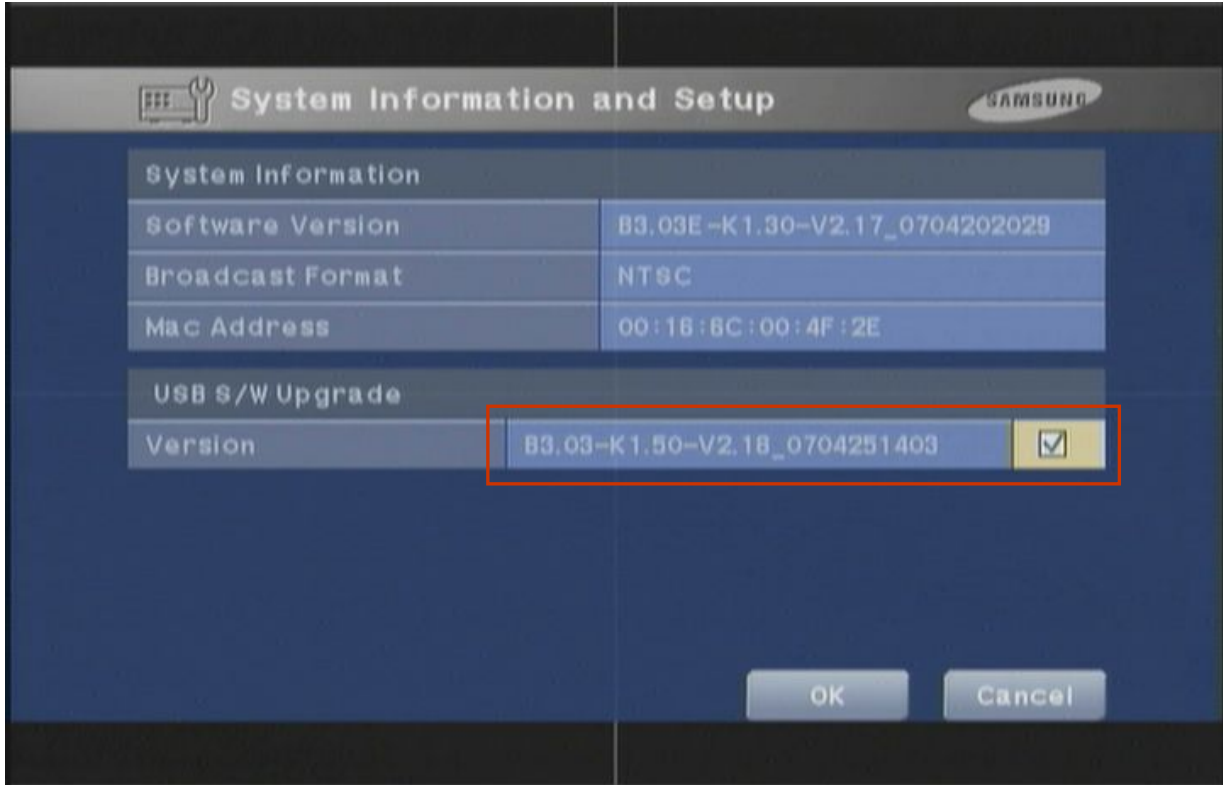
Step.3.

After rebooting, the upgrading is completed. (v2.17).

Once upgrading to v2.17 is completed, the first message on the first screen is to upgrade to v2.18.



Step.4. With the USB Flash Memory still connected to the DVR, start the second upgrade from the system-system information and setup Menu. Be careful not to have the DVR power turned off during upgrading.



After rebooting, the upgrading is completed. (v2.18)

C. Using Smart Viewer

- i. Copy two (2) upgrade files to the HDD of a PC with Smart Viewer installed.
(One from each type: shr2xxx_v2.17_0704xxx.tgz, shr-2xxx-pkg(B3.03)-K1.50_V2.18_07xxxx.tgz)
- ii. Connect SmartViewer with the DVR and start upgrading from SW version tab.
- iii. Choose a file type such as 'shr2xxx_v2.17_0704xxx.tgz'.
- iv. When upgrading starts, the connection with Smart Viewer is cancelled and the upgrading starts from the DVR.
- v. Be careful not to have the DVR power turned off during upgrading.
- vi. Once upgrading to v2.17 is completed, the first message on the DVR screen is to upgrade to v2.18.
- vii. Connect SmartViewer with the DVR and start the second upgrade from the SW version tab.
- viii. Choose the file type such as 'shr-2xxx-pkg(B3.03)-K1.50_V2.18_07xxxx.tgz'.