

SSC-5000 Program Update Guide

Compliant OS : Windows XP, Vista



SOFTWARE INSTALLATION

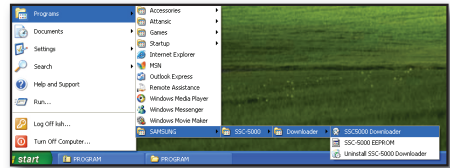
1. Run "**SSC-5000 Downloader Install.exe**" in the installation program folder.
The setup file will install the updater and the USB driver.

 ■ Disconnect both SSC-5000 and USB cable before you start the installation.

2. When the installation is done, the "\\Program Files\\SAMSUNG\\SSC5000 Downloader" folder will be created as well as "**SAMSUNG\\SSC-5000\\Downloader**" in the start folder.
3. Prepare the A to A USB cable.
Use the USB cable to connect between PC and SSC-5000, and turn on the player.


4. Updating EEPROM

- ① Click "**SSC-5000 EEPROM**" in Programs > Samsung > SSC-5000> Downloader.
 - Once you ran this, no further update is needed.



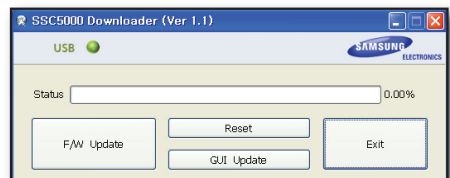
- ② You will see the "**FX2 EEPROM Programmer**" window as in the right figure.
- ③ Click <**Program Large EEPROM**>.
- ④ Select "**Bulkloop.iic**" from the attached update files.
The update will be completed in a few seconds.
- ⑤ When the download is done, exit the program.




 ■ Make sure you reset the system before use.

5. Click "**SSC-5000 Downloader**" in Programs > Samsung > SSC-5000> Downloader.
You will see the "**SSC5000 Downloader**" window as in the right figure.

- You can also update version 1.0.
- The indicator flashes green when the USB device is properly connected.



- **F/W Update** : Updates the firmware of SSC-5000.
- **GUI Update** : Used to update the graphic user interface (GUI).
- **Reset** : Used to restart the system when the update is completed.
It functions as turning off the player and turning it back on.
- **Exit** : Exits the application program.
 -  <**F/W Update**> will be disabled in NET-i mode.

6. Updating the firmware version

Click <**F/W Update**>.

Select "**SSC5000(V1.10_XXXXXX).bin**" in the attached update files.

You will see the update progress in the <**Status**> bar and the program will be completed in a few seconds.

7. Updating GUI

Click <**GUI Update**>.

Select "**ImageXXXXXX.bin**" in the attached update files.

You will see the update progress in the <**Status**> bar while the download will be done in about 7 minutes.



- When the update is done, you will see the Program Counter on the display. Wait until the counter is completed and press the <**Reset**> button.
- You must first update the firmware before updating the GUI.
- If the player is reset with GUI alone updated, you can not restore the player permanently.

